

# CHANGE ORDER

CONSTRUCTION SPECIFICATIONS INSTITUTE CHICAGO CHAPTER

2020 CSI CHICAGO  
CHAPTER AWARDS AND  
RECOGNITIONS

See page 5.



July-  
August



M2M<sub>CONNECTION</sub>

Keeping members connected when we are apart.

See page 4.

FROM THE PRESIDENT 2

DIRECTORS AND OFFICERS 3

MEMBER CONNECTION 4

AWARDS AND RECOGNITIONS 5-8

QUICK READS 9

CHAPTER EVENTS 10

EVENTS BEYOND THE CHAPTER 11

CHAPTER ARTICLE 12

CSI BEYOND THE CHAPTER 14

## Upcoming Chapter Events

7/14 - The New Chicago Building Code Roofing -  
Related Provisions – New Construction

7/29 - Using LinkedIn To Generate A Steady  
Stream Of Sales Prospects

See page 10.

## Remote Learning Library

Live online CEU's  
from our members & chapter partners.

See page 11.



## Industry Events Calendar

Events From Our Partners And Advertisers

See page 11.



## Included Article

Windy City Rooftops: New Chicago Building Code  
Overhauls What's Overhead

See page 12.



## LEADERSHIP TEAM 2020-21

### PRESIDENT

**Brad Schwab**  
CSI, CDT

### PRESIDENT-ELECT

**Jennifer Friedland**  
CSI, CDT

### VICE PRESIDENT

**Guadalupe Casimiro**  
CSI, CDT

### VICE PRESIDENT

**Scott Conwell**  
FCSI, CDT

### SECRETARY

**Paul Fogarty**  
CSI, CDT

### TREASURER

**Elias Saltz**  
CSI, CCS, CDT

### MEMBERSHIP OFFICER

**Heather Rice**  
CSI, CDT

### DIRECTORS

**Chris Walsh**  
CSI, CDT

**Heather Rice**  
CSI, CDT

**Heather Salisbury**  
CSI

**Heidi E. Cervantes-Garcia**  
CSI

**Jeremy Olsen**  
CSI, CCS, CCCA, CDT

**Melissa Gibson**  
CSI, CCS, CCCA, CDT

**Rachel Nava**  
CSI, CDT

### IMMEDIATE PAST PRESIDENT

**Andrea Baird**  
CSI, CCCA, CDT

### DIRECTOR - NCR

**Jennifer Friedland**  
CSI, CDT, LEED GA

### EXECUTIVE DIRECTOR

**Beth Winkler**



## Utilizing Digital Technology To Drive Engagement & Connection

There is no denying that you, our members and our partners, are facing a lot of uncertainty due to COVID-19 as we head into our 2020/2021 Fiscal Year. One thing I am certain of is you can count on CSI Chicago to be there for you all while we continue our mission to advance the greater Chicago area design and construction communities knowledge of building information management, construction technology, and project delivery methods to improve facility performance while fostering relationships and promoting education.

Our plan for this upcoming year is simple, utilize digital technology to drive engagement and connection. Our chapter has always done a great job of connecting the Chicago AEC Community by utilizing in-person events that included high level technical education programming, in-person social events, in-person community involvement projects and digital communication platforms. We are committed to delivering you, our members and partners, the same level of education, networking, community involvement and communication by utilizing our robust website capabilities, Zoom meeting technology and digital communication platforms until it makes sense to bring us back together in-person. We will get back to in-person events, but I am confident this push to utilize more technology will better the chapter for the future and will provide more opportunities for members to engage beyond just in-person events. Utilize [our website](#) today as there are a lot of digital tools available for member and partner utilization (i.e. [M2M Connection Tools](#), [Remote Learning Library](#)).

Due to the abrupt shift to utilizing digital technology, plus our need to be able to adapt quickly to the uncertainty ahead we will be simplifying the number of committees we have. The 2020/2021 Board of Directors has already approved the ten committees, has identified committee chairs and we will be posting them soon on the website with full descriptions and online sign-up forms for those of you who want to get involved and help. Please watch your email for committee information to come out in the coming weeks.

Thank you Andrea Baird for your leadership this past year and thank you all for the opportunity to serve as this year's Chapter President. This organization means a lot to me and I am honored and excited to work with you all this year. If you have any questions please feel free to contact me directly.

Brad Schwab  
[bschwab@schwabgroup.net](mailto:bschwab@schwabgroup.net)  
630-772-3516

**M2M** CONNECTION  
Built By Members For Members



Submit content for the Change Order Newsletter using our M2M Connection Tool Box.

CLICK TO VIEW OUR LEADERS

[www.csichicago.org](http://www.csichicago.org) • [info@csichicago.org](mailto:info@csichicago.org) • 773-466-4147

## Welcome 2020-2021 Leaders

Welcome to the chapter's directors and officers starting their term on July 1, 2020. We look forward to your leadership this upcoming year.

### President



**Brad Schwab**  
CSI, CDT

Term Ending 6/30/2021

### President-Elect



**Jennifer Friedland**  
CSI, CDT

Term Ending 6/30/2021

### Vice President



**Scott Conwell**  
FCSI, CDT

Term Ending 6/30/2021

### Vice President



**Guadalupe Casimiro**  
CSI

Term Ending 6/30/2022

### Treasurer



**Elias Saltz**  
CSI, CDT, CCS

Term Ending 6/30/2021

### Secretary



**Paul Fogarty**  
CSI, CDT

Term Ending 6/30/2021

### Past-President



**Andrea Baird**  
CSI, CDT, CCCA

Term Ending 6/30/2021

### Membership Officer



**Heather Rice**  
CSI, CDT

Term Ending 6/30/2021

### Director



**Rachel Nava**  
CSI, CDT

Term Ending 6/30/2021

### Director



**Jeremy Olsen**  
CSI, CDT, CCS, CCCA

Term Ending 6/30/2021

### Director



**Chris Walsh**  
CSI, CDT

Term Ending 6/30/2021

### Director



**Heidi E. Cervantes-Garcia**  
CSI

Term Ending 6/30/2022

### Director



**Melissa Gibson**  
CSI, CDT, CCS, CCCA

Term Ending 6/30/2022

### Director



**Heather Salisbury**  
CSI

Term Ending 6/30/2022

CSI Chicago's Director for the North Central Region will be Jennifer Freidland, CSI, CDT, term ending 6/30/2021.

## CSI Chicago Platinum Partners

PLATINUM

**3M** Science.  
Applied to Life.™

**Architectural Building Solutions**  
Character and Experience is our design for Excellence

**Senergy®**

**BEHR**

**BLUE LINE**  
BUILDING PRODUCTS

**CON  
SPEC  
TUS**

**CUSTOM**  
TILE INSTALLATION SYSTEMS

**MAPEI**

**RENOVATION**  
by MAXXON

**DUPONT**  
**Tyvek**

Parksite

**Pella**  
COMMERCIAL

**PAC-CLAD**  
PETERSEN  
A CARLISLE COMPANY

**BUILDING TRUST** **Sika**

**SMARTci**  
SMARTER BY DESIGN. PROVEN BY PERFORMANCE.

[Click here](#) to contact a Platinum Partner representative.





## Member Spotlight

**Jennifer Friedland, CSI, CDT, LEED GA**

Jennifer Friedland has worked in the building products industry since 1997, beginning as a specification representative in Michigan. She recently moved within the Saint-Gobain family from CertainTeed to Vetrotech, to be the Regional Sales Manager for the Midwest. In her current role, she coaches independent manufacturer representatives and works with architects and contractors.

Jennifer's proudest accomplishment was working on a local, multi-phased, city project last year (not named due to owner privacy). She worked in collaboration with a team of amazing technical geniuses to utilize a newer technology, in an unlikely application - the project is still unfolding!

She says that CSI is the only association she has been a part of consistently through her career and finds the comradery and support is unlike any other. Jennifer is proud to be stepping into the role of President-Elect with the chapter.

Jennifer believes that we should be bold in sharing our ideas! She says we all have something to contribute to our profession no matter what level of experience, degree, or specialty if we are passionate about it.

In her free time, Jennifer enjoys running and loves being a dog mom to two rescues. She also says that she is not competitive, adding in that no one ever believes her! We will let you form your own opinion.



## Member Spotlight

**Kevin Carter, CSI**

Kevin started his career with CETCO shortly after graduating from the University of Illinois at Urbana-Champaign. Under the mentorship of several waterproofing industry professionals, he became a go-to resource for our North American sales team. Most recently, Kevin accepted the role of Northern Illinois Technical Sales Manager for CETCO.

Kevin recalls his most memorable project as an 800,000 SF project in Northern California. The designers required a solution for isolating structural components designed by separate engineering firms. He was able to work with them to create custom joints that could span the required gap – all while maintaining the integrity of the waterproofing.

Kevin recently joined CSI Chicago to not only be involved with the greater design community, but also have the opportunity to learn from the wealth of knowledge and resources that our industry professionals have to offer. He considers himself an avid learner and plans to take every opportunity to improve himself while contributing where he can.

He advises everyone to “be a sponge.” Absorb all the information that you can from mentors and other industry professionals around you. Everything that you say and do should be a learning experience, so that you are a little better than you were yesterday.

Kevin loves to cook as it provides him a great way to unwind from a busy day. He also has a 5-year old Beagle/Dachshund mix named Patches. He also keeps busy with woodworking, welding, and the occasional concrete countertop.

## Membership Milestones

### New Member

**Paraic Lally, CSI**

*Cascadia Windows and Doors*

### 5 Years

**Nolan Day, CSI, CDT**

*Life Safety Hardware Consultants*

### 15 Years

**Holly Hirsch, MBA, BA, CSI, AIA, ASHRAE, ASPE,  
LEED GA, USGBC**

**William Zientarski, BS, CSI, CDT**  
*Hi-Performance Glazing Solutions*

### 20 Years

**John Birazzi, CSI, CDT, AIA, LEED AP, NCARB**  
*Antunovich Associates, Inc.*

### 30+ Years

**Dennis Langley, CSI (34 yrs)**  
*Weese Langley Weese*

**Ralph Wiser, CSI, AIA, NCARB (35 yrs)**

**Brian Berg Sr., CSI, Member Emeritus (39 yrs)**  
*Berg Engineering Consultants, Ltd.*

*Thank you to all of our members who are celebrating an anniversary with CSI Chicago this month.*



CSI Chicago recognizes the efforts of individuals, companies, and organizations that work to keep the chapter thriving. Thank you to everyone who contributed in same way to the chapter's success this past year!

## Chapter Awards

### 2020 President's Award

**Brad Schwab**  
CSI, CDT



*For outstanding service and leadership on the Executive and Communication committees by sharing your knowledge of marketing, communications, and organizational structure as well as volunteering countless hours for the advancement of CSI Chicago.*

### 2020 Technical Award

**Melissa Gibson**  
CSI, CCS, CCCA, CDT



*For distinguished service and leadership of the Specifier Roundtable Committee.*

### 2020 Rookie Of The Year

**Nicole Bird**  
CSI



*For not only showing up, but stepping up and raising your hand for available volunteer opportunities during your first year of membership.*

### 2020 Award Of Excellence

**Scott Conwell**  
FCSI, CDT



*For distinguished service on the Industry Roundtable and Chapter Program events by leveraging your experience and network to bring timely and local events to CSI Chicago.*

### 2020 Award Of Excellence

**Jennifer Friedland**  
CSI, CDT



*For distinguished service and leadership on the Programing and Executive committees.*

### 2020 Award Of Excellence

**John McKevitt**  
CSI



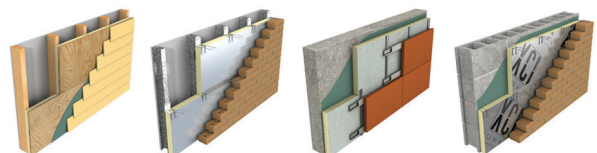
*For distinguished service by sharing your experience in foundations and nonprofits and helping to define the interface of the Foundation and Chapter as well as insurance requirements.*

Renee Doktorczyk, FAIA, CSI, CCS, SCIP  
Renee@ArchiTechSpec.com

**ArchiTech**  
CONSULTING, INC.

800 E. Northwest Hwy, Ste 208  
Mount Prospect, IL 60056-3457  
Tel: 224.345.3450

## Energy Efficient Xci Polyiso



Brad Schwab • 630-772-3516  
bschwab@schwabgroup.net  
www.hunterpanels.com

## Leadership Recognition

Thank you to all those who served on the board or volunteered on a committee in 2019-2020. It is the strength and dedication of our volunteers that makes CSI Chicago the amazing chapter that it is. Below is the CSI Chicago Member list of those who volunteered as part of the leadership team this past fiscal year (July 1, 2019-June 30, 2020).



### Directors & Officers

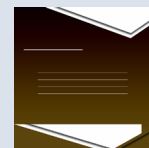
Andrea Baird, *President*  
 Brad Schwab, *President-Elect*  
 Jennifer Friedland, *Vice President*  
 Scott Conwell, *Vice President*  
 Elias Salz, *Treasurer*  
 Chris Carpenter, *Secretary*  
 Robert Moretti, *Membership Officer*  
 Peter Grotenhuis, *Immediate Past President*

Guadalupe Casimiro, *Director*  
 Heather Rice, *Director*  
 Jeremy Olsen, *Director*  
 Paul Fogarty, *Director*  
 Rachel Nava, *Director*  
 Randall Chapple, *Director*  
 Drew Clausen, *NCR Director*



### Awards Committee

Andrea Baird, *Chair*  
 Brad Schwab  
 Melissa Gibson  
 Peter Grotenhuis



### Certification Committee

Paul Fogarty, *Chair*  
 Gabriel Bode-Jimenez



### Communications Committee

Brad Schwab, *Chair*  
 Demetria Boatwright  
 Heidi E. Cervantes-Garcia  
 Rachel Nava



### CSI2eye Committee

Drew Clausen, *Chair*  
 Alan Itzkowitz  
 Kira Rogatnik  
 Kurt Moehlman



### Finance Committee

Elias Saltz, *Chair*  
 Andrea Baird  
 Brad Schwab



### Historian

Joseph A. Stypka  
 Elias Saltz



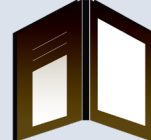
### Membership Committee

Jessica Newell, *Co-Chair*  
 Robert Moretti, *Co-Chair*  
 Chris Walsh  
 Heather Rice  
 Jeremy Olsen  
 Patrick Duffy  
 Peter Grotenhuis  
 Rachel Nava



### Nominating Committee

Peter Grotenhuis, *Chair*  
 Andrea Baird  
 Brad Schwab



### Programs Committee

Jennifer Friedland, *Chair*  
 Andrea Baird  
 Guadalupe Casimiro  
 Heather Salisbury  
 Melissa Gibson  
 Scott Conwell  
 Shana Kim

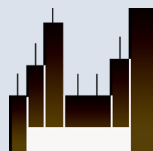


### Rebuilding Together Committee

Guadalupe Casimiro, *Chair*  
 Francisco Rosas  
 Heather Salisbury  
 Jeremy Olsen  
 John McKeivitt  
 Judy Tolle  
 Kathy St Joseph  
 Nicole Bird  
 Paul Larson  
 Rachel Nava

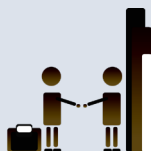
## Leadership Recognition

(Cont. from previous page.)



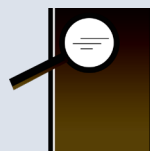
### Roundtable-Industry Committee

Chris Carpenter, *Co-Chair*  
Scott Conwell, *Co-Chair*



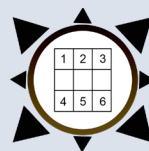
### Roundtable-Meet The Reps Committee

Pat Ruban, *Chair*  
Melissa Gibson  
Kurt Moehlmann  
Shana Kim



### Roundtable-Specifier Committee

Melissa Gibson, *Chair*  
John Birazzi  
Larry Nordin  
Randy Chapple  
Shana Kim



### Roundtable - Summer Committee

Jeremy Olsen, *Chair*



### Roundtable-Technical Committee

Tim Blatner, *Chair*  
Jeff Diqui  
Jeremy Olsen



### Social Committee

Nolan Day, *Co-Chair*  
Kristin Henriksen, *Co-Chair*  
Chris Walsh  
Dewain Peterson  
Jeremy Olsen  
Karen Swank  
Kira Rogatnik  
Kurt Moehlmann  
Kyle Magnuson



### Sponsorship Committee

Drew Clausen, *Chair*  
Peter Grotenhuis  
Scott Conwell



### Technical Committee

Randall Chapple, *Chair*

## Chapter Partnership Recognition

Thank you to the Chapter Partners this past fiscal year (July 1, 2019 - June 30, 2020). We appreciate your support in the chapter's mission and commitment to improving collaboration with members of the design and construction industry.



### 2019-2020 PLATINUM PARTNERS



COMMERCIAL



BUILDING TRUST





## Chapter Partnership Recognition

(Cont. from previous page.)

THANK  
YOU

### 2019-2020 GOLD PARTNERS

**ArchiTech**  
CONSULTING, INC.

**VCI**  
HUN + ER  
CONTINUOUS INSULATION

**team**

THANK  
YOU

### 2019-2020 SILVER PARTNERS

**ALLEGION**

**ARISTECH**  
SURFACES

**CRCA**  
CHICAGO ROOFING  
CONTRACTORS ASSOCIATION

**dormakaba**

**RR** ENGINEERING  
ARCHITECTURE  
+ FORENSICS  
**+J**

**SCHWAB**  
GROUP

## Membership Recognition

Congratulations to all the members celebrating membership anniversaries in 2019-2020. Below is the CSI Chicago Members list of whom celebrated a milestone CSI anniversary this past fiscal year (July 1, 2019-June 30, 2020).



Brad Schwab, *CSI, CDT*  
Bruce Roth, *CSI*  
David Thomas, *CSI-EP, CDT*  
Francisco Rosas, *CSI*  
John Stumpf, *CSI*  
Matt Spelde, *CSI*



David O'Bryan Jr., *CSI, CDT*  
Ronald Harrison, *CSI, CDT*  
Tyler Barton, *CSI*



David Meyers, *CSI, CCPR, CDT*  
Joakim Backstrom, *CSI*  
Thad Goodman, *FCSI, CCPR, CDT*



Brett Bunke, *CSI, CDT*



George Reigle, *CSI*  
James Kreps, *CSI, CCCA, CDT*  
Patrick Duffy Jr., *CSI, CCPR, CDT*  
SueEllen C Edwards, *CSI*



Mike Petersen, *CSI*



Joseph Stypka, *FCSI, CCS, CDT*



Kurt Moehlmann, *CSI, CDT*  
Thomas Engstrand, *CSI, CCS, CDT*



James Lucas, *CSI*

## Programming Survey Results



Thank you all who participated in our 2020 programming survey. We received ninety-two responses with many helpful comments. The feedback provided in the survey will help guide the board and programming committee as they plan for the upcoming year.

The survey results are posted for members to access on our Chapter Discussion Board. You can access the discussion board through the button below or through our [M2M Tools webpage](#). (You must be logged into your CSI account.)

We hope to continue the programming discussion, so if you did not get a chance to participate or want to give additional feedback, we encourage you to comment on the discussion board by replying back to the thread.

[VIEW SURVEY RESULTS & PROVIDE COMMENT](#)

## Partnership Packages Updated

The chapter's partnership packages have been updated for the new fiscal year.

Becoming a CSI Chicago Chapter Partner is your path to maximum exposure among our members and guests. A Chapter Partnership communicates to members that your organization supports our chapter's mission and that you are committed to improving collaboration with members of the design and construction industry.

Consider one of our three partnership levels – Platinum, Silver or Gold. Your partnership will keep you visible throughout the year and your support enables the chapter to continue to deliver high-caliber programming, education, events and networking.

If you have any questions on packages, please contact Beth Winkler at [administration@csichicago.org](mailto:administration@csichicago.org).



[VIEW PARTNERSHIP PACKAGES](#)

## An Important Message About Diversity & Inclusion From The CSI Chicago Board

The recent deaths of Black Americans at the hands of law enforcement and subsequent events over the past several days have put a spotlight on the longstanding systemic racism that exists in our country, including the Chicagoland area where most of us live and do business. While it may be uncomfortable to acknowledge this fact, or have open dialogue about it in professional settings, we have to recognize our shortcomings on racial equality and address them in meaningful ways.

Many of us have used this moment to challenge ourselves and ask what role we play in perpetuating systemic racism. CSI Chicago is a reflection of an industry that is woefully lacking in diversity and equity, and we can make efforts as individuals and within our Chapter to bring change.

The Board of Directors is creating a Diversity and Inclusion Committee that will focus on creating awareness about the importance of equality through inclusion. We are currently developing initiatives to be carried out by the committee, and we are committed to doing our part as a Chapter to make change happen in the AEC industry.

As a Board, we feel it is important to be clear on our position. We do not speak for all our membership, but this is how we intend to lead.

## The New Chicago Building Code Roofing-Related Provisions – New Construction

*Critical Considerations for Commercial Roof System Designers (Low-slope)*

**Tuesday, Jul 14, 2020, 11:00 AM - 12:30 PM**

Presented By:

Jason Wilen, AIA, CDT, RRO

Senior Associate II at Klein and Hoffman

Thomas J Kane, AIA, NCARB, CSI, LEED AP, QCxP

Senior Associate at Klein and Hoffman

CSI Chicago members Jason Wilen and Thomas Kane from Klein and Hoffman will address the new Chicago building code and energy code provisions relevant to roof system design with an emphasis on what has changed from the old code. Many of these provisions are also relevant for reroofing. They will also examine how a peer review process can enhance code compliance.

**1.5 Hour program held via Zoom meeting. Complimentary to CSI Chicago members and nonmembers.**

*Space is limited to first 100 registered attendees.*

Continuing Education: 1.5 AIA CES HSW/LU

**FULL DETAILS & REGISTRATION**

## Chapter Board Meetings

The board has set the first few board meetings of the new fiscal year. All meetings will be held by Zoom meeting.

Upcoming Chapter Board Meetings:

- Thursday, July 30, 3:00pm
- Wednesday, August 26, 3:00pm
- Wednesday, September 30, 3:00pm
- Wednesday, October 28, 3:00pm

Chapter board meetings are held monthly to conduct chapter business and for the board to hear reports from committees.

Requested agenda items must be submitted to chapter president, Brad Schwab, at [bschwab@schwabgroup.net](mailto:bschwab@schwabgroup.net) at least 5 days before the meeting.

Any chapter member interested in attending the board meeting, must contact the chapter president, Brad Schwab, at [bschwab@schwabgroup.net](mailto:bschwab@schwabgroup.net) to request a link to the Zoom meeting.

## Using LinkedIn To Generate A Steady Stream Of Sales Prospects

**Tuesday, July 29, 2:00 - 4:00 PM**

Presented By: Wayne Breitbarth, CEO of Power Formula LLC

Are you looking for new ways to:

- Generate quality leads and close more deals
- Connect with decision-makers at your target companies
- Drive traffic to your LinkedIn profile and website
- Build credibility in your marketplace
- Discover insider information about your prospects

Then this event is for you! Nationally recognized speaker, author, and LinkedIn consultant Wayne Breitbarth will help you discover easy ways to leverage LinkedIn to get more work and make more money...and you'll come away with action steps that can produce immediate results.

**Cost For 2 Hour Program Held Via Zoom Meeting:**  
**CSI Chicago Members: Complimentary**  
**See webpage for Nonmember Professional, Emerging Professional, and Student rates.**

*Limited to first 100 registered attendees.*

**FULL DETAILS & REGISTRATION**



Color Takes Flight

Minneapolis-St. Paul Airport Loading Dock  
Photo: bangphoto.com

**Precision Series Tiles**  
Cupped  
Colors: Patina Green, Hemlock Green, Arcadia Green, Custom Aged Copper



**PAC-CLAD**  
PETERSEN  
A CHILLER COMPANY

CASE STUDY @ [PAC-CLAD.COM/MSP](http://PAC-CLAD.COM/MSP)

PAC-CLAD.COM | [INFO@PAC-CLAD.COM](mailto:INFO@PAC-CLAD.COM) | 800 PAC CLAD



## Remote Learning Library



This library serves as a resource for online education opportunities provided by CSI Chicago members and chapter partners. All online educational opportunities listed are approved for AIA CES continuing education credits, CEU's for your self-reported CSI certification CEUs, and some events may be approved for other CEUs.

Use the links below to learn more about individual events, the CEUs they offer, and to register. This library is updated weekly.

### Upcoming Events:

7/08, 12:00pm - [The Benefits of Mineral Wool as Continuous Insulation](#) by Owens Corning

7/09, 2:00pm - [Fiberglass: Simple & Cost Effective Solutions to Energy Code Requirements + Introducing the World's First Fiberglass Window Wall](#) - Exterior Walls by Cascadia Windows Ltd

[SEE ALL REMOTE LEARNING OPPORTUNITIES](#)

### Looking To List An Opportunity?

CSI Chicago Chapter members and partners that would like to be a provider can [click here](#) to learn more.

## Industry Event Calendar



The Industry Events Calendar serves as a resource for upcoming events for Chicagoland AEC professionals.

CSI Chicago does not facilitate or manage the logistics or details of the opportunities listed below. Attendee management, capacity, content, CEU management and fulfillment, etc., is managed by event host/coordinator.

### Upcoming Events:

7/01, 8:00am - [Gaining Traction in Your Business](#) - Webinar by IIBEC-Chicago

[SEE INDUSTRY EVENT CALENDAR](#)

### Looking To List An Industry Event?

If you are interested in listing an industry event with us, [click here](#) to learn more.



**Durable, Code-Compliant Wall Systems with Unlimited Design Flexibility**



**Introducing Insulated Masonry Veneer Systems**

Fully-integrated exterior cladding systems with a continuous air and water-resistive barrier and insulation for superior performance. Insulated Masonry Veneer Systems feature BASF MaxGrip Veneer Mortar, a high-strength, specially-formulated setting bed mortar used to adhere natural and manufactured stone, tile, and thin brick veneer.


Learn more at [www.senenergy.basf.com](http://www.senenergy.basf.com) or contact your local BASF representative, David Meyers at [david.meyers@basf.com](mailto:david.meyers@basf.com) or 630-423-1980.

© 2019 BASF Corporation. All rights reserved.



FLOORING PREPARATION SYSTEMS

**Durable Floor Covering Solutions**





**Under Carpet, Wood, Vinyl, Laminate and Ceramic Tile**

**CustomTechFlooring.com**  
Howard Jancy, CSI, CDT | Commercial Architectural Services  
[Howard.Jancy@cbpmail.net](mailto:Howard.Jancy@cbpmail.net) | 312-515-9215



A DIVISION OF  
**CUSTOM**  
A QUIKRETE COMPANY

## Windy City Rooftops: New Chicago Building Code Overhauls What's Overhead

*Republished From Biznow*



**Recommended by: Jason Wilen, CSI, AIA, CDT, RRO**

Architects, building owners and developers in Chicago are all going to start looking up this summer — toward the roof, that is.

Some of the most drastic changes in the new building codes the Chicago City Council approved in April of last year involve the design and construction of roofs. As pieces of the new building code come into force this summer, builders, owners and developers will have to carefully evaluate their plans to make sure they are staying within regulations without sacrificing cost and efficiency.

"We're in a bit of a gray zone through the spring — companies are free to use the new or the old building code," said Jason Wilen, a Senior Associate at Klein & Hoffman, a Chicago-based architectural and structural engineering firm. "But what code gets applied to your building depends on exactly when you applied for a permit and when each part of the code goes into effect."

Chicago building professionals will need a team on their side to help them prioritize and review their construction plans based on the code updates.

Wilen, who serves as one of Klein & Hoffman's roofing experts, said some of the changes may take Chicago contractors by surprise, because they represent a 70-year leap in building standards — the city's building code was last overhauled in 1949. The new code brings Chicago more into line with the latest edition of the International Building Code, transforming a homegrown code into one based on the most commonly adopted model codes used in the U.S.

The overhaul is also made more challenging by the fact that the new code's twelve volumes each take effect on different dates. While the section governing energy conservation became mandatory in January, the "Building" and "Rehabilitation" portions of the code will not come into force until August. While most of the roofing regulations are contained in the "Building" code section, Wilen said certain code updates are contained within the energy section, meaning that builders cannot just ignore roofing updates until August, and must plan ahead now.

### What's Changing

There are six primary areas of increased stringency for roofs contained within the 2019 code updates, according to Wilen.

The most important for Chicago builders is wind uplift

*Article continued on the next page.*

**RENOVATION**  
by MAXXON®

# JUST CLEAN, PRIME & POUR

## YOUR GO-TO SELF-LEVELER

800-238-8461  
Maxxon.com/123EZ

# LEVEL EZ®

Now more than ever...

## Transparency Transforms –

### Behaviors Communication Results

[Learn How.](#)

**CONSPICUOUS**

*Solutions for  
Revolutionizing  
the AEC Industry :*

- Systems and Performance Documentation
- Construction Specifications
- Risk & Quality Advisory

Elias Saltz, CSI, CCS  
Chicago, IL  
609 628 2390  
[esaltz@conspicuousinc.com](mailto:esaltz@conspicuousinc.com)



## Windy City Rooftops: New Chicago Building Code Overhauls What's Overhead

(Continued from previous page)

pressure resistance — how to attach roof systems to keep them from rising up and flying away in high winds. The new wind uplift requirements have been lifted straight from the 2018 International Building Code, Wilen said, which includes “proximity to a body of water” as a significant risk factor. Because of Lake Michigan, Chicago is now subject to some of the most stringent wind uplift requirements outside of hurricane zones.

“We all know how brutally the winds blow during the winters here,” Wilen said. “The code also becomes more stringent the higher you build. Downtown Chicago is a double whammy, next to Lake Michigan and with some of the tallest buildings in the country.”

Next, most important for Chicagoans to consider are metal roof edges and copings that line roofs across Chicago. Here, too, tall buildings and proximity to water mean Chicagoans will face especially stringent requirements. On low-slope roofs, which Wilen said are ubiquitous in Chicago, the accepted designs have now changed, so contractors who have been installing roofs in the same way for decades now have a new rulebook.

The code also has strict new requirements for ballasted roofs, which are often used for their low cost of installation, since they require a membrane to be weighed down with rocks or other weighty materials, rather than fastened in place. While

Wilen does not anticipate that owners will be required to remove their ballasted roofs, he expects owners may not be able to replace them with the same techniques when it comes time for reroofing.

The other three areas of updates are more stringent requirements for plant-covered “green roofs,” new regulations governing repairs and specific standards for various roofing materials, like single-ply roofing, modified bitumen and ethylene propylene diene monomer rubber.

### Who Needs To Worry About It

The updates to the building code will be most important to contractors and other builders in Chicago. The code updates could significantly alter proposed budgets for new projects, Wilen said, so builders should be familiar with the 2019 code before bidding on new work.

Anyone who owns a building in Chicago, especially large landlords and developers with portfolios of buildings, should pay attention to the new roofing codes, Wilen said, as should property management companies and other real estate companies that deal in the built environment.

The good news is that most Chicago building professionals already have the new codes on their radar and are making the appropriate preparations, Wilen said. Some were prepared even before the new code — many of the roof designs that Klein & Hoffman has provided over the last five years would stand up to the new code without any changes.

Wilen said he hopes the code updates will help propel Chicago buildings into the future.

“It was such a major undertaking to overhaul this document,” Wilen said. “With so many stakeholders in the code, it took five years of effort to push it over the finish line. But now, Chicago is getting on board with the rest of the country.”

### Recommend An Article To Your Fellow Members

Share an article that you found helpful and thought provoking or wrote with your fellow members. Please [click here](#) and fill out a *Article Recommendation*.



Balconies can be challenging environments for tile or stone installations — whether over occupied or unoccupied space.

MAPEI offers waterproofing systems solutions from the substrate up. Best of all, these solutions qualify for MAPEI's Best-Backed® system warranty, giving architects peace of mind when specifying MAPEI products.

For more information, visit [www.mapei.com](http://www.mapei.com) or call 1-800-992-6273.



- 1 Concrete
- 2 Mapebond™ 700, Mapebond 710 or Mapebond 720 adhesive
- 3 Mapethene™ HT or Mapethene LT sheet waterproofing
- 4 Mapedrain™ 30, Mapedrain 35 or Mapedrain 50 drainage composite
- 5 Modified Mortar Bed (thick-bed and render mortar)
- 6 Mapelastic® 315 (with Fiberglass Mesh) or Mapelastic AquaDefense waterproofing membrane
- 7 Kerabond™ T / Kerastatic®, Kerabond / Kerastatic™ or Granirapid® mortar system
- 8 Ceramic or stone tile
- 9 Ultracolor® Plus FA or MAPEI Flexcolor® CQ grout
- 10 Mapesil™ T 100%-silicone sealant
- 11 UltraCare™ Penetrating Plus Stone, Tile & Grout Sealer penetrating sealer



### Jeff M. Diqui

Director, Industry Development  
and Technical Services

Office: 630-396-7141

Cell: 630-606-8220

[jdiqui@imiweb.org](mailto:jdiqui@imiweb.org)

2140 W. Corporate Drive  
Addison, IL 60101



INTERNATIONAL  
MASONRY  
INSTITUTE  
[www.imiweb.org](http://www.imiweb.org)

BYGONE 14



## Certification Renewal Guidelines

*News From CSI National*

CSI certifications are valid for a period of three years and expire on June 30 or December 31 of the third year. The year of expiration is based on the initial date of certification. CSI sends email reminders for Certification Renewals beginning 120 days prior to the deadline. If you have opted out of receiving CSI emails, it is your responsibility to monitor the due date for your Certification Renewal(s).

To renew:

- Actively learn and earn at least 24 Learning Units (LUs) within the three years leading up to your renewal date.
- Log your qualifying 24 Learning Units (LUs) into your CSI account (membership is NOT required).
- Complete the Certification Renewal attestation.
- Pay the renewal fee

More details on what qualifies for Learning Unit in the PDF or click the button to be taken to the webpage.

[Download Renewal Information PDF](#)

[CERTIFICATION RENEWAL WEBPAGE](#)

## National Volunteer Opportunities

*News From CSI National*

**Current volunteer opportunities include:**

- Speaker/Moderator for Learning Sessions
- Certification Committee
- Outstanding Chapter Commendation Award Nomination Submission (FY20)
- Testing The Test | Standard Setting (CCCA and CCS Working Groups)

[NATIONAL VOLUNTEER OPPORTUNITIES](#)

## CONSTRUCT Now Virtual

*Events From CSI National*

CONSTRUCT, an Informa Markets show, made the difficult decision to transition CONSTRUCT 2020 to a digital experience. CSI fully supports this decision.

The CONSTRUCT virtual event will take place October 7th – 9th, one week later than the original dates. CSI events associated with CONSTRUCT, such as the Honors and Awards Celebration and the Annual Business Meeting, are being rescheduled as well. Full details will be announced soon.

[CONSTRUCT SHOW UPDATES](#)

### CSI Chicago Gold Partners

GOLD

**ArchiTech**  
CONSULTING, INC.

**VCI**  
HUNTER  
CONTINUOUS INSULATION

**team**

**SJ Mallein**  
& Associates

[Click here](#) to contact a Gold Partner representative.

### CSI Chicago Silver Partners

SILVER

**ALLEGION**

**ARISTECH**  
SURFACES

**CRCA**  
CHICAGO ROOFING  
CONTRACTORS ASSOCIATION

**dormakaba**

**R R**  
+ J  
ENGINEERING  
ARCHITECTURE  
+ FORENSICS

**SCHWAB**  
GROUP

[Click here](#) to contact a Silver Partner representative.