

April 2017

CHANGE ORDER

CONSTRUCTION SPECIFICATIONS INSTITUTE CHICAGO CHAPTER



CSi2eye

CSI Chicago Chapter's 4th Annual CSi2eye took place on Thursday, 16 MAR 17 at East Bank Club. 36 Product Representatives from 21 companies met with 30 Design and Construction Professionals over a period of 8 hours in almost 300 eye-to-eye sessions. Thousands of construction ideas were discussed.

CONTINUE READING...

QUICK LINKS

UPCOMING EVENTS

PRESIDENT'S LETTER

SPONSORSHIP OPPORTUNITIES

MEMBER NEWS

CHAPTER NEWS

LEADERSHIP DIRECTORY



773-466-4147

csichicagochapter@gmail.com

<http://chicago.csinet.org>



TABLE OF CONTENTS

- PRESIDENT'S LETTER
- UPCOMING EVENTS
- MEMBER NEWS
 - ANNIVERSARIES AND NEW MEMBERS
 - MEMBER SPOTLIGHT
 - BEYOND THE CHAPTER
- CHAPTER NEWS
 - EVENT RECAP
- HOT TIP OF THE MONTH
- SPONSORSHIP AND MARKETING
 - UPCOMING OPPORTUNITIES
 - PARTNERSHIPS AND MARKETING
- INSTITUTE AND REGIONAL NEWS
- INDUSTRY EVENTS
- LEADERSHIP DIRECTORY
 - OFFICERS AND DIRECTORS
 - COMMITTEE MEMBERS
- CONTRIBUTED ARTICLES
- THE CLOSEOUT



Outstanding Chapter Commendation
Chicago Chapter 12 time award recipient

UPCOMING EVENTS

- Chicago Joint Sealant Master Specification, Part 1
Specifier Roundtable: Wednesday, April 5, 12-1pm
- Lessons Learned in the Field
Young Professional Event: Thursday, April 6, 6-8pm
- Working with Independent Specification Writers
Technical Roundtable: Wednesday, April 12, 12-1pm
- Continuous Insulation as Sheathing Systems
Meet the Reps Roundtable: Friday, April 28, 12-1pm
- Presentation and Tour of the UL Building Envelope Performance Lab
Chapter Program: Tuesday, April 18, 4-7pm
- Mundo Verde
Thursday, April 27, 8:30am -4pm
- Bowling Night
Social Event: Thursday, May 11, 6-8pm
- Annual Banquet and Recognition Night
Social Event: Wednesday, May 24, 5:30-8:30pm

SAVE THE DATE

See more upcoming events....

President's Letter

Checking Stuff Off the List

I am a compulsive list maker- so far in my life, it's the only way I can keep track of what I need to get done. And these lists can get quite lengthy, and frankly, overwhelming (e.g. "write the April president's letter before Beth yells at me"). As a result, I get profound satisfaction from being able to cross items off the list. Here at CSI, we've been able to cross some things off the list this year, and I thought I spend some word in this letter to update you.

- **Website Update** – After a bit of a slow start, we are getting close to launching the new chapter website. The CSI has rolled out their new website at the institute level, and we are currently the beta testers for the new chapter microsites, which the institute promulgates. Our new site will look and work a lot like the new institute website, csiresources.org (check it out if you haven't already), and we will be sharing content with them. One of the great new features is the ability to have conversations with your peers via the new communities discussion

tools. We will be able to have a community of CSI Chicago members, and also smaller, more focused communities, so you be able get the most out of the experience. Our



website task force is in meetings now to figure out just how to tailor the microsite experience for our chapter. We hope to be fully online by June or so.

- **Young Professionals** – The Young Professionals Committee is in full swing. They have already put on two fantastic events at their new hangout, Jaks Tap, and they have their last event of the program year happening this Thursday, April 6th. This time out, they are hosting rapid-fire presentations on "lessons-learned" by an array of industry professionals on the topics of their choice. As usual (thanks to our very generous sponsors) beer & pizza are on us, so please come out for this fun and educational event.
- **Marketing Materials** – For a few years now, we've wanted to put a little more polished look on our marketing materials- things like our membership brochure, sponsorship and media kit package, and events flyers. We just wrapped up getting these completed. So, if you want a few hardcopies to share with your friends, coworkers, & business contacts, just talk to Beth and we'll get you some. They will also be available electronically (on the new website!). We plan to send the events flyers out

President's letter continued on the next page...

NEED SUBFLOOR SOLUTIONS? WE'VE GOT YOU COVERED.

- PRIMERS AND MOISTURE MITIGATION SYSTEMS
- REPAIR, PATCHING, AND SMOOTHING COMPOUNDS
- FLOOR LEVELING COMPOUNDS AND UNDERLAYMENTS
- WATERPROOFING MATERIALS
- ADHESIVES



The best floors are based on subfloors from



Toll Free: 855.391.2649 www.hpsubfloors.com

Mark R. Nelson
President

Nelson Testing Laboratory
717 Industrial Drive
Elmhurst, IL 60126

Ph.: 630-501-0230
Fax: 630-501-0270

mnelson@nelsontesting.com
www.nelsontesting.com

Chapter Partners

PLATINUM PARTNERS



COMMERCIAL
SOLUTIONS

GOLD PARTNERS

Cultured Stone® by Boral®



UNION MASONRY CRAFTWORKERS
CONTRACTORS & CONSULTANTS

H'A'FELE



HPS NORTH AMERICA

SILVER PARTNERS

ArchiTech
CONSULTING, INC.



ALLEGION



NORCON
Inc.



RULON INTERNATIONAL



President's Letter (Cont.)

to firms and offices in Chicagoland to drum up even greater attendance for our events- keep an eye out for those, and let us know if you want your office to get one by dropping an email to Beth.

- **East Bank Club** – It looks like we’ve settled in to having our monthly chapter programs at the East Bank Club. They have been very good hosts and provide us a lot of amenities without breaking our bank account. Please let us know if there are items or issues we ought to have addressed with them, as we look to book events there in the fall.
- **Expanded programming** – In addition to Young Professionals, we’ve rolled out two new subgroups of roundtables: “Meet the Reps” roundtables (thanks to the tireless efforts of John Birazzi) have been very well received and we think we can sustain it for future program years. And the Summer Series Roundtables will be back this upcoming summer with one meeting a month of product solutions-focused education by some of our trusted industry members.
- **Expanded and easier volunteering** – We’ve made an effort this year to “spread the load” of the many volunteer opportunities for the monthly production of the newsletter, chapter meetings, and special events by using SignUp.com, an online volunteer management tool. By breaking seemingly daunting tasks (like putting together the monthly feature content of the Change Order newsletter) into smaller volunteer opportunities, we can effectively crowdsource the workload. This means more people can help with smaller tasks, and we all stand to gain the satisfaction of ownership of the outcome. If you’d like to help the chapter, but don’t want to commit to some damn committee for a year, going on SignUp.com and volunteering to, for example, write a brief article for Change Order, or being a door greeter at one of our chapter events, is a great way to help. And we all appreciate it.

For us officers and directors with nine months on the job now, it feels so good to be checking items off the list. Please feel welcome to join us in our efforts, and we’ll slowly but surely “checklist” our way to a better, stronger chapter. And now I can check off writing this letter- **check!**

Have a great April, and see you soon at an event.

Jeremy Olsen CSI, CCS, CCCA, AIA, LEED AP

Chicago Joint Sealant Master Specification, Part 1 Specifier Roundtable: Wednesday, April 5, 2017



After the success of the Chicago Paint Master Spec, we've had multiple requests to tackle another "favorite" among specifiers: Section 079200, "Joint Sealants." We've reserved technical representatives from leading joint sealant manufacturers to attend our kick-off meeting. Together, we will work through the challenges of specifying joint sealants, develop strategies for effective specifications, and incorporate lessons-learned from all attendees. Our eventual end-product will be a master specification made available for Chicago Chapter members' use, with regular updates by manufacturers to include the latest-and-greatest offerings.

Our April roundtable will be step one in the process. We hope to review and begin editing the specification at this meeting. In preparation for the roundtable, those who RSVP will be sent a copy of a joint sealant specification to review. Please come prepared for a healthy discussion.

The discussion will be facilitated by Melissa Gibson, NCARB, CSI, CCCA, LEED AP BD+C, Associate Vice President and Specifier, Epstein with input from all encouraged.

Learning Objectives:

1. Review the types of joint sealants.
2. Evaluate the performance characteristics of joint sealants and their recommended uses.
3. Compare the applicable joint sealant standards, including VOC's.
4. Review, assess and integrate participants joint sealants lessons-learned into a master specification.

Time: Noon – 1 PM

Location: Epstein, 600 West Fulton Street, Chicago

Or by Skype Meeting. Log in information e-mailed in advance.

Continuing Education: 1.0 AIA/CES LU



[Click Here to Register](#)

Reservations: Required by April 2, 2017. Limited seating available on a first come basis, with priority given to CSI Chicago members. Non-members requesting to attend in person will be added to a waiting list until members are accommodated. Notification of available non-member in-person seating is sent at least two business days in advance.

If your plans change and you cannot honor a reservation, please contact the Chicago chapter so we can offer your seat to someone on the waiting list. Attendance and webcast is complimentary to members and non-members.

Webcast for members/nonmembers is available and instructions will sent 2 days prior to the roundtable. Webcast information will be sent to anyone who is not able to get an in-person seat

Email: csichicagochapter@gmail.com or **Call:** 773-466-4147

About CSI Specifiers Roundtables: Sessions are held in an informal setting to encourage dialog and attendees are welcome to bring a snack or lunch. Specifier roundtables are a forum for specifiers and architects to discuss specification topics, exchange ideas and share lessons learned. Experienced, as well as new specifiers, are encouraged to attend these small group sessions that require participation and input by attendees.

Lessons Learned
Young Professional Event: Thursday, April 6, 2017

Do we really learn from our mistakes? Let's find out!

Join us for a young professionals event:

LESSONS LEARNED IN THE FIELD

All members and nonmembers are welcome to attend this complimentary social and informative event. Both young and seasoned professionals will enjoy learning from architects, contractors, engineers, and product representatives and the lessons they have gained in the field.

[Click Here to Register](#)

Event Details:

Jaks Tap
901 W. Jackson Blvd.
Chicago, IL 60607

6:00 pm - Event registration, complimentary pizza and drinks
6:30 pm - Content presentations delivered in rapid-fire format
8:00 pm - Q&A session - your chance to ask the questions!

Receive 1.0 AIA/CES LU for attending. Learning Objectives:



Hear industry leaders share their in-field trials and triumphs.
Gain an understanding of how field conditions can drive project design.
Learn to avoid mistakes from those who have already encountered them.
Discover creative solutions to design and construction obstacles.



SPONSORED BY



SPONSORSHIP

Sponsor the event for \$150 and receive the following:

2 minutes to speak during event announcements; Display of business cards and product literature at event; Company recognition with logo at event and link in May newsletter

CONTACT

Questions about the event or sponsorship?

csichicagochapter@gmail.com OR 773.466.4147

Working with Independent Specification Writers

Technical Roundtable: Wednesday, April 12, 2017



Whether you are currently consulting with, looking to hire, or are a product representative interested in the relationship, this presentation and discussion will explore the different aspects of independent specification writers. Hear from two independent specification writers, an architect and a product representative as we consider advantages in hiring, 'how to' methods of working with, value of connections with product representatives and expectations from the different perspectives of specification writers and the people who work with them.

Facilitator:

Elaine Fitzgerald, AIA, CCS | ArchiTech Consulting, Inc.

Panelists:

Independent Spec Writer | Alan B. Itzkowitz, FCSI, CCS | ABI Specifications Consulting

Independent Spec Writer | Renee Doktorczyk, FAIA, CCS | ArchiTech Consulting, Inc.

Architect | Timothy Blatner, CSI, CDT, LEED AP | Fitzgerald Associates Architects

Independent Product Representative | Kurt Moehlmann, CSI, CDT | RPI, Inc.

Learning Objectives:

1. Gain a better understanding of the relationship between Architects and the specification writers as sub-consultant.
2. Understand the roles, responsibilities and contractual relationships with out-of-house specification writers.
3. Become familiar with the advantages of a working relationships with independent specification writers.
4. Discuss best-practices of working with independent specification writers.

Time: 12:00pm – 1:00pm

Location: Pella Crafted Luxury, Merchandise Mart, 222 W Merchandise Mart Plaza, Suite 100
(Wells Street Side Entrance)

Continuing Education: 1.0 AIA/CES LU



[Click Here to Register](#)

Reservations: Required by April 9. Limited seating available on a first come basis. Complimentary to members and non-members.

Email: csichicagochapter@gmail.com or

Call: 773-466-4147

About CSI Technical Roundtables: Technical roundtable topics are geared toward architects, specifiers, and others involved the design and construction process as well as manufacturer representatives interested in the product category/technical issue.

Understanding the Importance of Air and Water Field Testing of Installed Fenestration Products

Chapter Program: Tuesday, April 18, 2017



CSI CHICAGO AND NORTHERN ILLINOIS CSI PROGRAM AND TOUR OF UL BUILDING ENVELOPE PERFORMANCE LAB:



First Hour: Live, instructor-led, presentation by industry expert speakers from Underwriters Laboratories (UL),

Second Hour: Tour of the UL Building Envelope Performance Lab

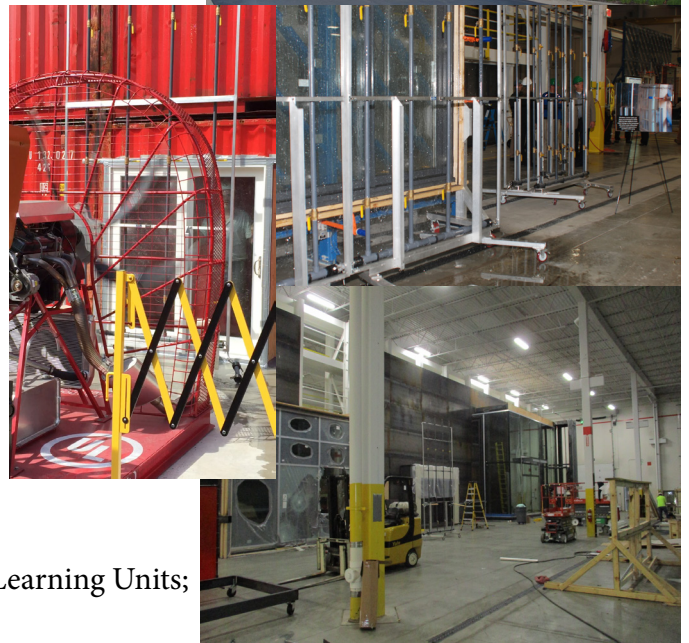
FIELD TESTING: This course will focus on the purposes of conducting air and water field testing, the standards and methods used to conduct the tests, and conditions for field testing readiness.

CASE STUDIES: The course will explore case studies to understand the value, importance, and findings from conducting air and water field testing.

LEARNING OBJECTIVES:

Upon completion of this course, Attendees will:

- Understand the purposes of air and water field testing.
- Understand specification provisions for air and water field testing.
- Understand the correct test standards and methods to be used.
- Understand how to interpret and use the information from test results.



LEARNING UNITS: Attendees will earn 2 AIA LU / HSW Learning Units;
Course Number S134-041817

SCHEDULE:

4 - 5 pm socializing and appetizers / 4:45 pm chapter announcements
5 pm program / 6 pm tour and test demonstration / 7 pm end event

COST: Members of Northern IL and Chicago Chapters: No Charge / Non-Members: \$40.

LOCATION: UL Building Envelope Performance Lab at 750 Anthony Trail, Northbrook, IL 60062



[Click Here to Register](#)

RIDE SHARE: [Sign up](#) to provide a ride or if you need a ride to this event from downtown Chicago.

Understanding the Importance of Air and Water Field Testing of Installed Fenestration Products

Chapter Program (cont.)

SPEAKERS:

Wayne Breighner, UL LLC, Building & Life Safety Technologies, Engineering Manager

Mr. Breighner directs and consults UL testing facility, specializing in fenestration testing. His responsibilities include, but are not limited to the following: structural, thermal, sound, and forced entry resistance. He currently aids clients with research and development, NFRC, AAMA, WDMA, ASTM, code compliance and certifications. He continues to work with contractors and consumers aiding them with his expertise and knowledge in curtainwall, window, and door testing (fenestration testing). He has experience chairing codes and standard meetings throughout the fenestration industry including ASTM, AAMA, WDMA, and FMA. Mr. Breighner is currently member of ICC and ASTM.

David Hintz, Senior Project Engineer at UL working within the Fire Resistance Team.

Mr. Hintz earned his bachelor's degree in Mechanical Engineering from The Cooper Union for the Advancement of Science and Art in New York, NY. He has over 8 years of experience as a fire test engineer and project manager, working extensively in the area of large-scale fire tests. His areas of specialization include fire testing of exterior wall assemblies and marine construction.

Digital Project Binders Industry Roundtable: Friday, April 21, 2017



The task of managing project samples and binders is no easy job and is continually changing throughout the project keeping it hard to maintain with up-to-date information. How would having this information in a single digital platform save your firm time and money? This roundtable will explore a program from [Pro Material Solutions™](#) which puts all the project binder information into one digital platform. We will also take a look at Specifix and MaterialAnnex, two new platforms that are helping the industry with better understanding a product installed and helping subcontractors and manufacturers sell overstock and discontinued products.

Presenter: Jerry Freeman, IIDA | President | Pro Material Solutions

Learning Objectives:

1. Review the basics of the application to understand what a digital project binder would look like and be arranged.
2. Learn how to build a digital project board for your project.
3. Realize the benefits and time saving of sharing information within a project team, through digital boards and speeding up sample ordering.
4. Explain how specifications can be downloaded for an entire project at one time.
5. Understand how storing your project information digitally can lesson the environmental impacts and save time by using less samples and printing.

Time: 12:00-1:00 pm

Location: Daltile Tile & Stone Chicago Gallery, 316 W. Hubbard St., Chicago

Continuing Education: 1.0 AIA/CES LU



[Click Here to Register](#)

Reservations: Required by April 18. Limited seating available on a first come basis. Complimentary to members and nonmembers. Registered nonmembers will be added to a waiting list until members are accommodated. Notification of available nonmember spaces is sent two business days in advance. If your plans change and you cannot honor a reservation, please contact the Chicago chapter so we can offer your seat to someone on the waiting list.

Email: csichicagochapter@gmail.com or **Call:** 773-466-4147

About CSI Industry Roundtables: Sessions are held in an informal setting to encourage dialog and attendees are welcome to bring a snack or lunch. Topics are selected that are not product or industry specific and assist in building skills and knowledge to better work within the design and construction community. CSI Product representatives and design professionals are invited to attend. If your plans change and you cannot honor a reservation, please contact the Chicago chapter.

Mundo Verde
Thursday, April 27, 2017

MUNDO VERDE

EDUCATION TOWARD IMPLEMENTATION.
POLICY AND PRACTICE.

A SUSTAINABILITY SYMPOSIUM FOR CONSTRUCTION PROFESSIONALS

Thursday April 27, 2017

KENDALL COLLEGE (Auditorium Rm. #525 - 5th floor)
900 N North Branch St, Chicago, IL 60642
- Free Parking Available

REGISTRATION FEE (Before April 20th):

\$65 FOR HACIA, AIA AND CSI MEMBERS

*\$85 registration fee after April 20th

* Event and meals are included in the registration fee.

* Continuing Education Credits (6 LU/HSW)

\$75 FOR NON-MEMBERS

*\$95 registration fee after April 20th

8:30 - 9:00 am

Check-in and continental breakfast at Kendall College - 5th Floor

9:00 am

Welcoming remarks

i. CLEAN ENERGY - 9:00 am -10:40 am - (100 Min)

- **Illinois State Senator Mattie Hunter** - Illinois Energy Bill (10 minutes)
- **Commonwealth Edison (ComEd)**- Fidel Marquez, Vice President (10 min)
- **Environmental Entrepreneurs (E2)**- Vittorio Gomez, Energy Bill Passage (10 min)
- **Illinois Environmental Council** - Matt Steffen, Communications Director (20 min)
- **Illinois Solar Energy Association** - Lisa Albrecht, Vice President, Policy Committee Chair (20 min)
- **Elevate Energy** - Anne McKibbin, Energy Efficiency Construction - (20 min)
- PANEL Q&A (10 min) --

ii. CLEAN WATER -10:40 pm -12:00 pm - 80 Min

- **Metropolitan Water Reclamation District (MWRD)** - Commissioner Josina Morita (10 min)
- **Metropolitan Planning Council (MPC)** - Josh Ellis, Vice President - Great Rivers Chicago (20 min)
- **Little Village Environmental Justice Organization (LVEJO)** Kim Wasserman-Nieto, Executive Director (20 min)
- **Chicago Park District** - Brendan Daley, Director of Strategy and Sustainability (20 min)
- PANEL Q&A (10 min) --

---- 12:00-12:30 pm BOX LUNCH ----

iii. CLEAN BUILDINGS - 12:30 am -2:20 pm - (110 Min)

- **City Of Chicago DPD**- Michael Berkshire - Green Projects Administrator (20 min)
- **Passive House Institute US (PHIUS)** - James Ortega, PHIUS+ Certification Staff (20 min)
- * **Public Building Commission (PBC)** - Bryant Payne, Director of Communications (20 min)
- * **Preservation Of Affordable Housing** - Julie Klump, Vice President, Design and Building Performance (20 min)
- * **Chicago Housing Authority (CHA)** - Ellen Sargent, Director of Sustainable Initiatives (20 min)
- PANEL Q&A (10 min) --

iv. CLEAN TRANSPORTATION 2:20 pm -3:40 pm - (80 Min)

- * **City of Chicago** - Chris Wheat - Chief Sustainability Officer (10 min)
- * **Chicago Department of Aviation** - Aaron Frame - Deputy Commissioner of Environment (20 min)
- * **Illinois Tollway** - Bryan Wagner - Environmental Policy and Program Manager (20 min)
- * **Chicago Transit Authority** - Kate Tomford - Energy and Sustainability (20 min)
- PANEL Q&A (10 min) --

3:40 pm - 3:50 pm

Closing Remarks and Thank You



COMMITTEE FOR SUSTAINABILITY
AND THE ENVIRONMENT

EVENT PARTNERS



AIA
Chicago



FOR EVENT SPONSORSHIP OPPORTUNITIES

Contact Juan Calahorrano
jcalahorrano@haciaworks.org

EVENT SPONSORS

DESIGNBRIDGE
ARCHITECTURE INTERIORS GRAPHICS



Click Here to Register

Continuous Insulation as Sheathing Systems

Meet the Reps Roundtable: Friday, April 28, 2017



This roundtable will give you the opportunity to get to know local representatives and learn about product selection and their applications in the market. Participants are encouraged to come prepared with questions in this open discussion format.

Moderated by: John Birazzi, AIA, CSI, CDT, LEED AP
Associate Principal, Klein and Hoffman

Representatives:

Atlas – Lance Williams
Carlisle - John Dashner, CSI
Dow Building & Construction - Kieran Carlisle, CSI, E.I.T.
Hunter Panels – Grant Stahl

Learning Objectives:

1. Learn what resources are available to help learn about the product and make the proper selections.
2. Discuss applicable standards for these products and their application.
3. Share tips, lessons learned, common mistakes in product use/application.
4. Summarize what to look for during installation and share recommended installers.

Time: 12:00-1:00pm

Location: Klein and Hoffman, 150 S Wacker Dr # 1900, Chicago

Continuing Education: 1.0 AIA/CES LU



[Click Here to Register](#)

Reservations: Required by April 25 2017. Limited seating available on a first come basis. Complimentary to members and non-members. Non-members requesting to attend will be added to a waiting list until members are accommodated. Notification of available non-member spaces is sent two business days in advance.

If your plans change and you cannot honor a reservation, please contact the Chicago chapter so we can offer your seat to someone on the waiting list.

Email: csichicagochapter@gmail.com or **Call:** 773-466-4147

About CSI Roundtables: Sessions are held in an informal setting to encourage dialog and attendees are welcome to bring a snack or lunch.

CSI Chicago Bowling Night

Thursday, May 11, 2017



Try to construct a perfect game with CSI Chicago and enjoy a night of great food and drinks.

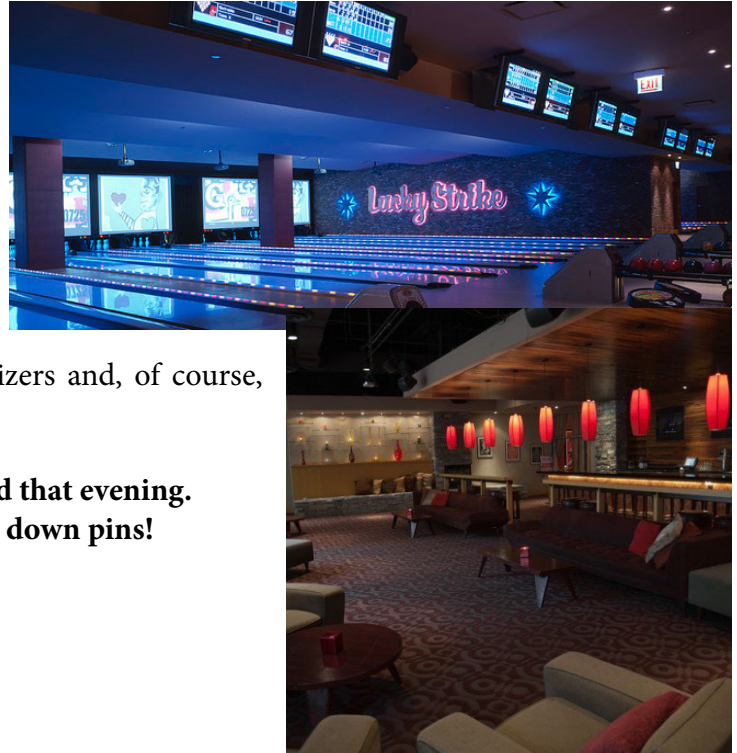
Location: Lucky Strike

River East Center 322 E. Illinois St., Chicago
(next to AMC Theatres)

Time: 6:00 PM – 8:00 PM

Arrive a few minutes early for shoe rental.

The bowling night will be held at Lucky Strike where we have reserved eight lanes. Your admission will include two hours of bowling, shoe rental, a variety of appetizers and, of course, dessert. A full cash bar will be open during this event.



**Contests with many great prizes will also be held that evening.
Not all contests require a the ability to knock down pins!**



Questions?

Comments?

Concerns? csichicagochapter@gmail.com

Contact:
Beth Winkler
773-466-4147

Registration: Required by Monday, May 1

Bowling Attendee: \$45 per person (includes bowling, shoe rental and food)

Non-Bowling Attendee: \$30 per person (limited spots, includes food only, no bowling)

*Event open to members and nonmembers

Register ►►

Become A Sponsor!

Event Sponsor: \$150 Includes one bowling attendee, logo on sign at registration table, recognition in following month's newsletter with logo and link

Lane Sponsor: \$350 Includes 4 bowling attendees assigned to your lane, same recognition as event sponsor plus sign at lane (you select the bowlers or we can help you find design/construction professionals to fill your spots)

Contest Sponsor: Add to the fun by donating a prize! Name your contest. Contests can be individual and team. Suggested Individual prizes of \$50 value. Suggested team prizes \$10-50 value per person (8 people per team). Contest sponsors will be recognized in the following month's newsletter.

Contest Ideas: Best team name, best score, best golf score (worst bowling score), most gutters, most strikes

Prize Ideas: Gift cards, cash, round of drinks (team prize).

CSI Chicago Awards Banquet and Recognition Night

Wednesday, May 24, 2017



CSI Chicago celebrates 64 years as a chapter as we look back at a successful year and recognize all that have contributed to the accomplishments and programs this year.

Catch up with friends, meet new people and recognize achievements.

Members and guests, please join us as we honor those who have contributed to the chapter - both individuals and companies. We will thank our board for their service this past year and welcome the new board who will take office in July. Recognition will be given to new chapter members and those who have reached a continuous membership milestone year.

LOCATION: Cliff Dwellers
200 S. Michigan Avenue
Chicago IL 60604-2487

TIME: 5:30pm Social, appetizers, and cash bar
6:30pm Plated dinner

COST: \$50 per person (member or non-member)

REGISTRATION: Required by Monday, May 15

Register ▶▶

SPONSORED BY:



CUSTOM[®]
A QUIKRETE[®] COMPANY

Contact: 773-466-4147 or csichicagochapter@gmail.com



Upcoming Events

Save the Date

TH.-SAT. 5/4-6 | CSI North Central Region Convention | "Capitol Capital Ideas"

Registration Open. Hosted by CSI Madison Chapter. [See Details >>](#)

FRI. 5/12 | Technical Roundtable

TH. 5/18 | Specifier Roundtable

FRI. 5/19 | Industry Roundtable

WED. 6/7 | Summer Series Roundtable | Finished Concrete Flooring

FRI. 6/24 | White Sox Tailgate & Baseball Game with CSI Northern Illinois

WED. 7/12 | Summer Series Roundtable | Curtain Wall Design

WED. 8/9 | Summer Series Roundtable | Specifying Automatic Pedestrian Doors



COMMERCIAL
SOLUTIONS

WOOD • FIBERGLASS
ALUMINUM • VINYL

LEARN MORE

Contact your local team:

Chris Carpenter, CSI, CCPR | Architectural Representative
ccarpenter@pella.com | 630-257-1465 | PellaEFCOSolutions.com

Member News

Anniversaries and New Members

Continuous years with CSI...

- 47 James Lucas, CSI
J.N. Lucas & Associates
- 40 Paul Rauch Jr., CSI
Rauch Clay Sales Corporation
- 30 Elliott Dudnik, PhD, CSI, AIA, FAIA, LEED AP
Elliott Dudnik & Associates
- 24 Joseph Balik, CSI, CDT
GCP Applied Technologies, Inc.
- 24 Raymond Coleman, CSI, CDT
SCB
- 22 Peter Dinschel, CSI
*Chicago Regional Council of Carpenters
Carpenter Training Center*
- 18 Tom Mikrut, CSI
Terrazzo & Marble Supply
- 16 Matthew Nordloh, CSI, CCPR, LEED GA
Integrating Products, LLC
- 16 Ryan Watson, CSI
Modernfold Doors of Chicago, Inc.

- 14 James Sagstetter, RA, CSI
Linn-Mathes, Inc.
- 12 Joakim Backstrom, CSI
Altusworks
- 12 David Meyers, CSI, CDT
Laticrete International, Inc.
- 11 Joseph Sennese, CSI
- 10 Larry Church, PE, CSI, CDT, LEED AP
- 8 Kevin Palmby, CSI, CCCA, DBIA
Dewberry
- 7 David O'Bryan Jr., CSI, CDT
Rust-Oleum Sales Group
- 6 Kevin Hoheisel, CSI
International Paint
- 4 Christopher Carpenter, CSI, CCPR
Pella Windows & Doors
- 1 Eric Kleinschmidt, CSI
- 1 Ken Rathbun, CSI-EP
Cetco

The Right Materials



The Right Way

Constructed by Experienced
Union Craftworkers and
Contractors

For answers to your masonry
questions, call 1-800-IMI-0988



Scott Conwell, FAIA, CDT, LEED AP BD+C
2140 W. Corporate Drive, Addison, IL 60101
Phone: (630) 396-3144 EMail: sconwell@imiweb.org
www.imiweb.org

Welcome New Members...

Paul Burch, CSI
John Goers, CSI
Michael Robinson, CSI
Life Safety Hardware Consultants
Casey Sincavage, CSI-EP

Joining from another CSI chapter...

Justin Robinson, CSI
Life Safety Hardware Consultants



Wesley Sherrer, CSI
Midwest Region Manager
wesley.sherrer@momentive.com
+ 1 614 392 1015
+ 1 614 314 9217 M
Momentive Performance Materials Inc.
6716 Damson Place
Westerville, OH 43082
www.ge.com/silicones



Licensed
Products

Section continued on the next page...

Member News

Let's Celebrate Together

Share your personal or professional achievements by notifying the chapter at csichicagochapter@gmail.com for inclusion in the following month's newsletter.

Congratulations to our Chicago Chapter members on their election at the Institute Level!

Institute Director from the North Central Region
Institute Secretary

Alan Itzkowitz, FCSI, CCS, CCCA
Anne Marie Roeper, CSI, CCPR

Congratulations to those who have taken and passed their spring certification exams:

CDT Exam | **Alex Sperfeld, CSI, CDT, LEED AP, AIA** | Cannon Design

CDT Exam | **Kevin M. Serena, CDT, LEED GA, GRP** | American Hydrotech, Inc.

Ride for a Reason

John Birazzi, Klein and Hoffmann, is participating in the Ride for a Reason - Burr Ridge to help support the kids of St. Jude Children's Research Hospital. This a charity that his mom supported on a yearly basis, no matter what, and he hopes to carry this family tradition in her memory. His team will be doing a 4- hour indoor bike relay race ride.

Will you help John support St. Jude by donating today? [Donate Ride for a Reason](#)

How your support helps:

- Families never receive a bill from St. Jude for treatment, travel, housing or food — because all a family should worry about is helping their child live.
- St. Jude is working to drive the overall survival rate for childhood cancer to 90%, and we won't stop until no child dies from cancer.
- St. Jude freely shares the discoveries it makes, and every child saved at St. Jude means doctors and scientists worldwide can use that knowledge to save thousands more children.

Please visit [John's St. Jude page](#) to make a donation. Once you donate, please share it on Facebook and Twitter with a challenge to support the kids of St. Jude. You'll help families and patients around the world.

Kathleen McGinley
Architectural Sales Representative, CSI

kmcginley@mapei.com
Cell: (630) 808-9944



MAPEI Corporation
1863 Tamohawk Ln., Naperville, IL 60564
Website: www.mapei.com

HÄFELE

Häfele America Co.
3901 Cheyenne Drive
Archdale, NC 27263-4000
Phone 800 423 3531 x 5818
Fax 336 862 7683
Mobile 331 213 4545
dwarren@hafeleamericas.com
www.hafele.com

DAN WARREN
Regional Director

Member Spotlight

Timothy Kennedy, Assoc. AIA, CSI - New Member

By: Noi Phonexayphova, CSI, CDT, LEED AP



Timothy Kennedy is a Master's Graduate from the University of Illinois at Urbana-Champaign. He joined CSI this year as part of the Chicago Chapter's CDT Scholarship program. He is currently an Associate I at Klein and Hoffman and was influenced by fellow

CSI member, John Birazzi, to join CSI in order to better understand the construction process and his role as an architect and designer. Timothy wants to develop his specifications understanding along with becoming a better professional for the future. To him, CSI serves as an excellent outlet to better himself, gives him a platform to continue his education, and provides a conduit for making professional connections. At Klein and Hoffman, Timothy's role includes researching building codes, developing architectural drawings and

bid documents, contract administration and other fun things architects enjoy doing. Klein and Hoffman is an award-winning firm that offers engineering peace of mind with creative solutions in the investigation, design, renewal and preservation of the built environment.

In his free time, Timothy enjoys rowing in the beautiful outdoors. He is an avid woodworker during his spare time. In his most recent project, he hand-built a mantle for his house! Other hobbies and activities include beach volleyball and freehand sketching, preferring ink and pen above all else.

Before joining Klein and Hoffman, Timothy was a plumber's apprentice during the summer for 7 years. He interned at Mitchell and Associates Architects and McDonald's US Restaurant Design. While at the University of Illinois, Timothy was a teaching assistant for the Architectural Lighting and Acoustics course.

Section continued on the next page...

We're more than just a paint company

- Extensive National Architectural Program
- Product and Environmental Certifications



Master
Painters
Institute

BEHR
behr.com/architect

Member Spotlight

Steve Hunt, CSI, CDT - 25 Year Member

By: Kurt Moehlmann, CSI, CDT

Steve Hunt: a fixture cemented to our Chicago Chapter CSI. Who doesn't know his cherubic smile and soft spokenness? A few details: Steve is married to Polly and has six, yes, six children: all girls. Their names are Leslie, Lauren, Sally, Carly, Anneliese and Nina. Leslie, you may remember, is Steve's talented songster who achieved stardom on the show American Idol by reaching the Finals.

Which brings us to one of Steve's guiding passions: music. He had planned on a professional musical career with success focused on New York City. Steve's father stepped in and provided some well intentioned counsel arguing for Steve to get in the family business. A change in Steve's professional life: from the cowbell and wood block to the cement block. As Steve says a most remunerative good choice. We all know Steve as Northfield Block and his current status, as of January, 2017, he remains dedicated to his Northfield Block roots but now he is an independent manufacturer's representative. He is the troubadour for their standard products and advancements, but is separately involved in developing a new mortarless CMU wall system called BLOCK UP. (For more info see www.block-up.com).

But to return to Steve and his music for to know Steve you must know him through his "skins". Every Monday night, he and his band, Extraordinary Popular Delusions, travel to and play at Beat Kitchen on the Chicago north side. Steve lives in St. Charles so we all know how long that trip is. They don't play for fame, glory or money (hell, they have to buy their own beer!). They perform to make music so that individually and collectively they express their souls. Much as each CMU builds a wall, Steve makes his music with each drumbeat and cymbal crash. Steve's rhythms provide the mortar that glues the band's melodies, riffs and harmonies. It seems contradictory or ironic that a man so grounded in a tangible product like CMU is also creating an intangible such as music. One of the mysteries of Steve Hunt and makes him worth further exploration

A little more Steve Hunt history. He graduated from



Wabash College (yes I didn't think it was a real college until I verified it through Wikipedia as an accredited institution). After college Steve went in to the textile business. That is right, Steve was a rag peddler. After success in that field, he joined his father, Max Hunt at Northfield Block in 1992 (as did two of his brothers, his sister and his brother-in-law). Success smiled on the entire Hunt clan and Northfield Block became a staple in Chicagoland and then Illinois building construction. Today they have three plants locally and service seven states. Northfield was purchased in 2003 by Oldcastle and Steve continues to promote advancements that the Northfield team developed through the years, such as larger, lighter and thermally efficient block, such as InsulTech. His new email address is stevehunt@northfieldblock.net.

But to know Steve you must probe deeper. Among his many charitable activities are: music contributor at the Baker Memorial United Methodist Church, and his work with veterans in programs Adopt a Platoon and Help Hospitalized Veterans. Yet Steve is most energized when he speaks of his efforts with the agency, Southern Poverty Law Center. This advocacy group tracks, dogs, confronts and sues organizations, the individuals or groups that promote or sustain hate crimes. If you want to see Steve motivated and inspired just ask about what this agency is working on and the good work they do. As you can anticipate there is much more about Steve to know and enjoy but I leave that to the reader to do the follow up. To say that Steve is interesting is an understatement yet we can say that about all of us, right?

[Sign up to write a member spotlight >>>](#)

Beyond the Chapter

Chicago CSI Members activities beyond Chicago Chapter

The following is a list of members of the Chicago Chapter of the Construction Specifications Institute that are volunteering for construction industry activities beyond the Chicago Chapter of CSI.

I hope to receive information regularly to expand this list and keep it current so that we can all be informed as to the breadth of member activities. Please send your construction industry volunteer activity information to me at:

jstypka@jahn-us.com

Thank you,
Joe Stypka

Member

Activities Beyond

Andrea Baird	Chicago CSI's representative judge for the Future Cities Competition 2017
Randy Chapple	Construction Specifications Institute Delegate to the Tile Council of North America (TCNA) Handbook Committee and to the ANSI A108 Accredited Standards Committee for Ceramic Tile Member of the U.S. Technical Advisory Group to ISO Technical Committee 189 on Ceramic Tile Committee member of ASTM E2751/E2751M "Design and Performance of Supported Laminated Glass Walkways"
Scott Conwell	International Masonry Institute (IMI) Delegate to the Tile Council of North America (TCNA) Handbook Committee and to the ANSI A108 Accredited Standards Committee for Ceramic Tile Member of the U.S. Technical Advisory Group to ISO Technical Committee 189 on Ceramic Tile
Jeff Diqui	Building Enclosure Council – Chicago chapter, Program Director Air Barrier Association of America (ABAA) Terminations and Flashings Committee
Renee Doktorczyk	CSI North Central Region, Institute Director Nominating Committee
Peter Grotenhuis	Chicago CSI's representative judge for the Future Cities Competition 2017
Frank Heitzman	Construction Specifications Institute, UDS Program Task Team
Alan Itzkowitz	Construction Specifications Institute, Certification Strategic Group Northern Illinois Chapter CSI, Vice President
Elias Saltz	Construction Specifications Institute, Practice Area Curriculum Committee CSI North Central Region Electronic Communications Chair
Joe Stypka	National Institute for Building Sciences (NIBS), UDS Modules Task Team for the National CAD Standard (NCS) American Institute of Architecture (AIA) MasterSpec Architectural Review Committee American Architectural Manufacturers Association (AAMA) AMC Finishes Committee Member



1563 Hubbard Avenue
Batavia, IL 60510
tel (800) 338-3355
ext 200838
cell (630) 788-0969
fax (330) 875-1700
mreed@parksite.com

Matthew Reed
Market Development Manager
Sr. Certified DuPont™ Tyvek® Commercial Specialist

PELLAEFCOSOLUTIONS.COM

CHRIS CARPENTER, CSI, CCPR
ARCHITECTURAL REPRESENTATIVE
27545 Diehl Road, Suite 100 • Warrenville, IL 60555
Phone: 630.675.4750
ccarpenter@pella.com




COMMERCIAL
SOLUTIONS

Officers and Directors for Fiscal Year 2018

At the March 28, 2017 Chapter Program, the Chicago Chapter membership elected the following officers and director for the next Fiscal year. These individuals will be in office from July 1, 2017 through June 30, 2018.

Elected Officers and Directors for Fiscal Year 2018:

President-elect Expiring 2018: Peter W. Grotenhuis, CSI, CDT
Vice President Expiring 2018: Larry Nordin, AIA, CSI, CCS
Vice President Expiring 2019: Heather Rice CSI, CDT
Membership Officer Expiring 2018: Robert Moretti, CSI, CDT
Secretary Expiring 2018: Andrea Baird, CSI
Treasurer Expiring 2018 Elias Saltz, CSI, CCS, LEED AP
Director Expiring 2018: Chris Walsh, CSI, CDT
Director Expiring 2018: Randall Chapple AIA, SE, CSI, CCS, LEED AP
Director Expiring 2019: Jennifer R Friedland, CSI, CDT, LEED Green Associate
Director Expiring 2019: Noi Phonexayphova, CSI, CDT, LEED AP
Director Expiring 2019: Renee Doktorczyk FAIA, CSI, CCS, SCIP
North Central Region Director Expiring 2019: Drew Clausen, CSI

Members continuing or assuming new roles for FY2018:

President: Melissa Gibson, CSI, CCCA, NCARB, LEED AP BD+C
Director Expiring 2018: Chris Carpenter, CSI, CCPR
Past President: Jeremy T. Olsen, CSI, CCS, CCCA, AIA, LEED AP

Section continued
on the next page...

PRODUCTS FOR CONCRETE RESTORATION

WALL PROTECTIVE AND DECORATIVE COATINGS

ADMIXTURES FOR CONCRETE

PRODUCTS FOR STRUCTURAL STRENGTHENING

PRODUCTS FOR LARGE PROJECTS, DAMS, CANALS AND VIADUCTS

PRODUCTS FOR TILE AND STONE

PRODUCTS FOR ROAD MAINTENANCE

PRODUCTS FOR SPORTS FACILITIES

PRODUCTS FOR CEMENTITIOUS AND RESIN FLOORING

PRODUCTS FOR UNDERGROUND CONSTRUCTION

ELASTIC SEALANTS AND ADHESIVES

PRODUCTS FOR SYNTHETIC TURF

PRODUCTS FOR RESILIENT AND CARPET FLOORING

PRODUCTS FOR ACOUSTIC INSULATION

PRODUCTS FOR BELOW-GRADE WATERPROOFING

PRODUCTS FOR WOOD FLOORING

THE WORLD OF MAPEI

TOTAL ARCHITECTURAL SOLUTIONS

As the leading global manufacturer of mortars, grouts and adhesives, MAPEI also offers the full spectrum of chemical products for construction projects – everything from dams, bridges and tunnels to malls, hospitals and condominium towers. We partner with the architectural community by providing a single source for system specifications, technical expertise/consultation and practical online architectural tools.

www.mapei.us/architects
Illustrations by Carlo Stanga

MAPEI
ADHESIVES • SEALANTS • CHEMICAL PRODUCTS FOR BUILDING

Chapter News (Cont.)

Chicago Chapter's Annual Report

Chapter President, Jeremy Olsen, presented chapter's annual report at the March 28 chapter program. To request a copy of this annual report, please send an e-mail to csichicagochapter@gmail.com.

NEW Membership and Sponsorship Brochures Available

Thanks to the hard work and dedication of its members, the CSI Chicago Chapter is among the most distinguished and successful chapters in the United States. However, we certainly don't take that for granted. We're always striving to grow our membership and offer impactful sponsorship opportunities to AEC and interested professionals.

To aid in this effort, we recently worked with a boutique marketing firm in Chicago to design new membership and sponsorship brochures. Click the links below to view:

[CSI Chicago Membership Brochure >>>](#)

[CSI Chicago Marketing and Sponsorship Information >>>](#)

While we encourage the use of digital copies, we will have a small number of printed copies to share during upcoming chapter events. Of course, if you would like copies to share with your firm or the AEC professionals you consult with, please contact Beth Winkler at csichicagochapter@gmail.com

Volunteer Spot

If you are not looking to commit to joining a committee, consider signing up for 1 or more volunteer spots to help the chapter to get more involved in the chapter. These are one time volunteer efforts and there are a variety of options depending on what works best for you.

Helping at an event:

- Door Greeter at an event
- Photographer
- Event Recap Article

Contributing to this newsletter:

- Project Closeout (Approx. 250 word project summary your firm recently completed w/ 2 photographs)
- Hot Tip of the Month (Approx. 500 word article on a industry related tip for other professionals)
- Member Spotlight on New or Feature Member (250-500 words and photo highlighting a member)
- Event Recap (250+ word summary of the event program)

To sign up for one of these or read more about the tasks, or see what is open click this link to see our sign up on SignUp.com: [More details and Sign up here!](#)

If you have any questions about the expectations of the various tasks, contact:
Beth Winkler csichicagochapter@gmail.com

Event Recap CSi2eye - March 16, 2017

By: Joseph A. Stypka, FCSI, CCS, FAIA | JAHN

Article Continued from Cover...

The day began with a delicious hot breakfast buffet and 45 minutes for networking.

My seven morning sessions discussed ideas about dual density insulation to resist impact yet conform better to substrate; using rockwool insulation as part fire-rated curtain walls; dynamic coefficient of tile (0.42); the incredible differences between ceramic and porcelain tile; how to integrate minimal metal grid systems into monolithic appearance acoustical ceilings and ceiling features; using ceiling islands of 40 percent to achieve full acoustical coverage; how to thermally and acoustically separate parking garages from residential units above; capabilities for acoustically separating indoors from outside; vacuum-insulated panels are here; phenolic insulation has made a come-back; how to simplify the fire-separation around fire cabinets; access panels are available with an r-value of 13; floor doors can be fire-rated and aluminum; more ways to drain and ventilate rainscreen cavities; the benefits of various thermal breaks for curtain wall versus storefront; AAMA 611 versus AAMA 612.



Whew!! The ideas to think about in one morning are like designing a whole building in three hours! Luckily there was also a break in there.

Then we had a scrumptious, healthy plated lunch. Steve Black of Power Construction was the winner of the morning Gift Card Drawing.

The speaker was Mark S. Graham, Vice President, Technical Services with the National Roofing Contractors Association (NRCA). Mark is an excellent public speaker and is able to convey serious technical information in a manner that keeps one involved. His topic was “Long Term Performance and Aged R-Values of Polyisocyanurate Insulation”, but he did not limit himself to that. Mark was full of technical information and did not shy away from discussing the controversial parts of r-value testing and aging. He will be free with passing along his talk and any other information to those interested.



Without going into details there are two points one should obtain from Mr. Graham's presentation:

1. Do NOT specify r-value. Instead specify thickness, type, class, and grade of insulation.
2. Because commercial roofs last on average 17 years the upgrade in r-value should probably be limited to going from 15 to 20 as that is projected to have a 15 year payback.

That brings us to the afternoon. My seven sessions included ideas on STPU Silyl Terminated Polyurethane, vapor permeable air barrier; connections of air barriers to roofs and waterproofing; proactive moisture mitigation systems; MMA (methyl methacrylate) flooring is still out there smelling as bad as ever, but curable below freezing; there is a new standard in preparation for hurricane resistant automatic

Article continued on the next page...

Event Recap CSi2eye - March 16, 2017 (Cont.)

sliding doors; triple glazed insulated glass units are still not typically cost-effective in Chicago for energy efficiency, although they may be useful acoustically; the availability of oversized glass is growing (120 sq ft, with maximum 120" wide x 192" high); welcome to Chicago, Mitch Hawkins; non-combustible MCM; unlike his booklet photo Bob Nixon has a beard just the same as I am trying to achieve; magnesium oxide (MgO) boards are becoming available in the US to be used for exterior sheathing and fire-rated assemblies; and there were only so many ideas to be absorbed in one day.

Then we were able to wind down a little with a reception. More networking, tasty hors d'oeuvres, and beverages were had by all. William Radford of Jensen & Halstead was the winner of the afternoon Gift Card Drawing.

I look forward to the next CSi2eye!

[Sign up to write an event recap >>>](#)



Check out our [Facebook page](#) for more event photos.

Section continued on the next page...

Bold Visual Effects



NEW Precision Series wall panels create dramatic shadow lines

Precision Series wall panels provide design flexibility with easy, cost-effective, horizontal or vertical installation. The original Precision Series HWP profile features a 7/8" depth, while the Precision Series Highline profiles are 1-3/8" deep to add visual intensity to a building's exterior. Panels are now available in 8 rib patterns and 33 ENERGY STAR® colors.



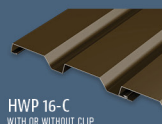
HWP 12-B
WITH OR WITHOUT CLIP



HWP 12-S
WITH OR WITHOUT CLIP



HWP 16-B
WITH OR WITHOUT CLIP



HWP 16-C
WITH OR WITHOUT CLIP



HWPC
BERKSHIRE BLUE - ENERGY STAR

PAC-CLAD.COM IL: 1 800 PAC CLAD
MD: 1 800 344 1400 TX: 1 800 441 8661
GA: 1 800 272 4482 MN: 1 877 571 20

[PACGREENINFO.COM](#)
YOUR GREEN METAL RESOURCE



Event Recap Building Enclosure Event - February 28, 2017

Building Enclosure Event: BECx: Building Enclosure Commissioning – Growing Trends Toward Higher Energy Performance and Operation Excellence

Presented by: John Runkle, P.E., Vice President - Building Science Solutions, Interek - Architectural Testing, Inc.

Article by: Michael DeRouin, CSI, CCCA |FitzGerald Associates Architects

The CSI Chicago Chapter annual Building Enclosure event each February is a program that I look forward to each year. The outstanding speakers that have shared their expert knowledge over the years has set the bar for exceptional programs.

John Runkle's presentation centered around ensuring the integrity of the building enclosure in today's increasingly complex codes, building delivery processes, myriad of all new products, specialty trade contractors and sustainability requirements. Building Enclosure Commissioning is an important factor in allowing projects to achieve ultimate energy performance and to improve operation and maintenance. His presentation provided many case studies and lessons to showcase how the inclusion of a building enclosure commissioner would have alleviated many costly end results to the Owner. The typical scope of services provided by a commissioner including review of drawings, specs, submittals, and a strategized presence on site to inspect the work of the contractor.



Emphasis was put on the 'pre-design' consulting phase to work with the Owner to develop the Owner's Performance Objectives (OPO) and to work with the design team to evaluate design concepts against the OPO and the AOR's design intent. Clearly identifying what problems are trying to be solved with the facade up front appears to go a long way towards helping clients understand the issues entailed over and above the upfront façade line item costs. The fact that the façade is the major contributor to the overall energy performance of a building is still not widely understood outside of architectural circles. Being able to do even the most rudimentary energy modelling for various scenarios such as orientation, shading, percentage of glass, variations in glass composition and performance characteristics and many more variables can have a huge impact on the energy performance of the building.



During the early phases of design when establishing the OPO it's always important to understand your environment in which the building is located so that all the potential issues/hazards a building will experience can be evaluated and properly designed. In places such as the Middle East, design of the building envelope must withstand sand storms; while in tropical locations like Florida, the building envelope must be designed for salt water exposure and hurricanes.



The difficulty of the detailing should not drive the aesthetics of the building **Article continued on the next page...**

Event Recap

Building Enclosure Event - February 28, 2017 (cont.)

otherwise we would be limited to concrete boxes. A complex design aesthetic may give building enclosure consultants the shivers thinking about all the opportunities for moisture to invade, however the challenge to architects is to find constructible and verifiable means to detail those complex buildings. The design team must be cognizant of what lines are put on paper to create details that will be built in the field. Understanding how the entire system of parts works together to satisfy so many aligned and competing project requirements is necessary to prevent them from being misunderstood by the contractor building it. Coordination and attention to detail is key for a successful design.

The method for evaluating constructability and the desired built result lies in establishing performance criteria for the various elements and testing prior to installation. It's the way towards easing some of the pain we are experiencing on projects across the boards today.

John stressed that review of the project manual to include requirements for full scale material mockups of locations that are most susceptible to failure (i.e. openings, penetrations, etc.). He emphasized constructing and testing mockups that incorporate as many conditions in a single mockup as possible and avoiding in-place mockups when possible. The lingering knowledge from this year's Building Enclosure event was the value of unit mock-ups – if you are to employ any strategy or itemized scope of service for the sake of improving building envelope – it is to do full scale mock-ups. Runkle said, “if you have \$1 to spend, spend it on mock-ups”.



Thank you to our event sponsors for making this event possible for a 14th year!



Pictures courtesy of Chris Carpenter, CSI, CCPR.

Check out our [Facebook page](#) for more event photos.

[Sign up to write an event recap >>>](#)

Hot Tip of the Month Masonry Dimensioning (Part 2)

By: Scott Conwell, CSI, CDT, FAIA, LEED AP | International Masonry Institute

Bricklayers can and should make field adjustments to mortar joint widths in order compensate for the imperfections of masonry units, non-modular architectural detailing, and construction tolerances.

In Part 1, we discussed the that the inherent beauty in masonry lies in its module, and that there is a systematic logic in how masonry units are put together based on their modularity. Part 2 will discuss departures from the module, whether by accident or by design, and how masonry can adapt to the non-module.

First let's talk about unit sizes and mortar joint sizes. In Part 1 we learned that a brick is exactly 3 5/8" wide x 2 1/4" high x 7 5/8" long (always expressed WxHxL), and mortar joints are 3/8" wide, resulting in the 8-inch module. In reality, brick sizes may vary as a result of manufacturing constraints, and mortar joint widths may vary as well. Often mortar joint widths vary as a consequence of masonry unit variation.

ASTM C 216 governs the manufacture of brick and sets forth requirements and allowances on brick's physical properties, including its size. For example, a Type FBS face brick is allowed to vary by as much as plus or minus 1/4 in. in the 8-in. (nominal) dimension. It may become necessary, then, to adjust the width of the mortar joints so the overall dimension remains the exact masonry dimension as designed. The Building Code Requirements for Masonry Structures (TMS 402) delineates the allowable variation in mortar joint width, which we'll look at in a moment.

There are also other factors that may affect mortar joint width. For example, what if it's impractical to design a

Article continued on the next page...



COMMERCIAL
SOLUTIONS

WOOD • FIBERGLASS
ALUMINUM • VINYL

LEARN MORE

Contact your local team:

Chris Carpenter, CSI, CCPR | Architectural Representative
ccarpenter@pella.com | 630-257-1465 | PellaEFCOSolutions.com

Hot Tip of the Month (Cont.)

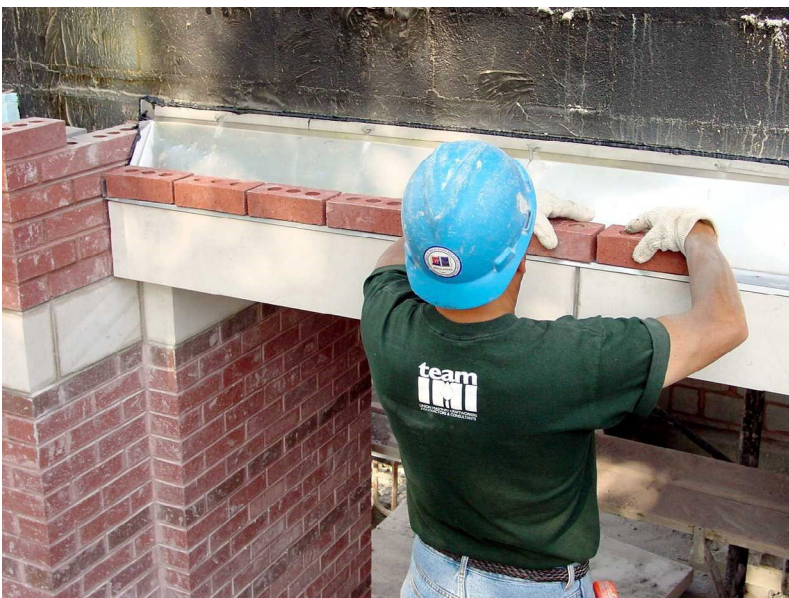
wall height or wall length, or an opening location, to the masonry module? Or if the foundation, slab edge, or shelf angle is not located exactly as designed. In all cases, we want to minimize cutting of units due to cost and appearance considerations. Ideally we want to use only full or half units, and certainly no cut unit less than 2 in. long. Therefore, it becomes necessary for the bricklayers to “open” the head joints (make them wider than 3/8”) or “close” the head joints (make them narrower than 3/8”).

Yet another factor potentially affecting mortar joint width is plumbness. Plumbness will dictate a brick’s horizontal position in a wall. According to code, masonry walls must be plumb within 1/4 in. for walls 10 feet or shorter; no more than 3/8 in. out-of-plumb in 20 feet; and the maximum for any wall to be out-of-plumb is 1/2 in., no matter how tall the wall. In some cases, the project specifications will be tighter than these standards at prominent areas of the wall like corners and brick returns at masonry openings. Skilled union bricklayers are well aware of plumbness standards, and generally do a great job of maintaining them. But again, standard mortar joint width and alignment may be sacrificed at the expense of maintaining plumb walls.

Finally, architects often incorporate challenging masonry details like projections, recesses, offsets, and quoins that effectively modify modular dimensions in certain areas of the wall, making those parts not fit the module. In order to achieve plumbness, uniformity of width, and relative joint alignment, mortar joint width will need to be adjusted from the standard 3/8 in.

The Building Code Requirements for Masonry Structures (TMS 402) governs the acceptable tolerances for mortar joint width. For bed joints (horizontal joints between units), acceptable variation from 3/8 in. is $\pm 1/8$ in. For head joints (vertical joints between units), acceptable variation from 3/8 in. is -1/4 in., +3/8 in. Bricklayers must adhere to these tolerances.

As you can see, adjusting the width of mortar joints is necessary to compensate for irregular unit sizes, to minimize cut units, to maintain bond, to accommodate recesses and projections, to accommodate non-modular designs, and to maintain plumbness. As they adjust joint widths, skilled bricklayers are trained to keep the mortar joints within tolerance and maintain uniformity of width, resulting in an attractive masonry building.



Union bricklayers lay out the first course without mortar to fine-tune mortar joint width and uniformity.

Hierarchy of concerns. You can't have them all, so consider them in this order.

- 1. Corners and returns are plumb (within tolerance).*
- 2. All units are full or half units, with no cut unit less than 2 in.*
- 3. Mortar joints are of acceptable width, i.e. 3/8 in. (within tolerance).*
- 4. Mortar joints are of uniform width.*
- 5. Head joints are in alignment (this is always last priority; it is not addressed in the code, and really should not be a concern at all. It is a consequence of items 1 through 4).*

[Sign up to share your hot tip of the month >>>](#)

Sponsorship and Marketing

Now clearer than ever, you can see your path to visibility in the construction industry. Our newly designed media kit has all the great benefits you already know in a format that is easier to understand:

[CSI Chicago Marketing and Sponsorship Information >>>](#)

Spring 2017 Sponsorship Opportunities

Thursday, April 6, 2017: Event Sponsor for Young Professional Event

- Jaks Tap, Chicago, 6-9 pm
- Cost: \$150 Includes complimentary attendance to the event
- 2 minutes of speaking at the beginning of event and display of business cards and a piece of product literature
- Company recognition with logo at event and logo with link in May Change Order newsletter

May 4-6, 2017: CSI North Central Region Conference “Capitol Capital Ideas”

- Hosted by Madison CSI Chapter
- Madison, Wisconsin
- [View conference information >>](#)
- [View sponsorship details >>](#)

[Sponsorship Form >>>](#)

April 27, 8:30am-4pm: Mundo Verde

- Hosted by HACIA
- \$250
- Sponsorship Contact: Juan Calahorrano jcalahorrano@haciaworks.org

Thursday, May 11, 2017: Bowling Night

- Lucky Strike, Chicago, 6-8pm
- Event Sponsor: \$150 Includes one bowling attendee, logo on sign at registration table, recognition in following month's newsletter with logo and link
- Lane Sponsor: \$350 Includes 4 bowling attendees assigned to your lane, same recognition as event sponsor plus sign at lane (you select the bowlers or we can help you find design/construction professionals to fill your spots)
- Contest Sponsor: Add to the fun by donating a prize! Name your contest. Contests can be individual and team. Suggested Individual prizes of \$50 value. Suggested team prizes \$10-50 value per person (8 people per team). Contest sponsors will be recognized in the following month's newsletter. Contest Ideas: Best team name, best score, best golf score (worst bowling score), most gutters, most strikes Prize Ideas: Gift cards, cash, round of drinks (team prize).

To reserve your spot or for more details contact: Beth Winkler at csichicagochapter@gmail.com

Become a Chapter Partner

Help the Chicago Chapter! Become a Partner and Promote Your Company to Influential CSI Professionals
To support the Chicago chapter and continue the high level of programming and education, consider becoming a platinum, silver or gold partner. Increase your visibility among not only high-level CSI members, but the extended 2,000 design & construction professionals who have elected to receive our communications and view the website.

Thank you to [Behr Process Corporation](#) for renewing their Platinum Partnership this month!

Thank you to all the Partners who support the chapter every month! [View current partners >>](#)

"Capitol Capital Ideas"

The 2017 CSI North Central Region Conference

May 4-6, 2017, Madison Wisconsin

The conference will be held at the newly renovated Park Hotel on the Capitol Square, facing the Wisconsin State Capitol Building. The Capitol Square is centrally located on the isthmus between Lake Mendota and Lake Monona, and is home to the famous Madison Farmer's Market.

The location on the square has easy access to museums, shops, bars, restaurants, and the lakes. We will be just a few blocks away from the Frank Lloyd Wright designed Monona Terrace Convention Center, and the State Street pedestrian mall which runs from the Capitol Square to the University of Wisconsin campus. For the more adventurous there is easy access to the 12 mile Lake Monona bike path loop.

Please visit [this Eventbrite page](#) to register to attend.

[More Conference Information >>](#)

Sponsors - *Limited Spots Remain!*

[Sponsorship Information>>>](#)

[Sponsorship Form >>>](#)



Section continued on the next page...



Because your reputation is on the line every day.

We make DuPont™ Tyvek® CommercialWrap® for professionals who build quality into every job. After all, it's architects and contractors like you who have made us the industry leader for over 25 years. And you're why we continue to develop innovative products, systems and services for the commercial market, like the 10-Year Limited Warranty that gives added peace of mind with every job and the DuPont™ Tyvek® Specialist Network that supports you on and off the site. DuPont™ Tyvek® Weather Barrier Systems—they're all about building a better and even stronger reputation.

For more information contact:

Matthew Reed

Market Development Manager

Senior Certified DuPont Tyvek Commercial Specialist

(630) 788-0969



Tyvek.

DuPont™ Tyvek®: CommercialWrap® • Wrap Caps • Tape | DuPont™: FlexWrap™ • StraightFlash™ • StraightFlash™ VF • Fluid Applied WB

© 2016 DuPont. All rights reserved. The DuPont Oval logo, DuPont™, Tyvek®, Tyvek® CommercialWrap®, FlexWrap®, StraightFlash® and StraightFlash™ VF are registered trademarks or trademarks of E.I. du Pont de Nemours and Company or its affiliates.

16-0130

Institute and Regional News (cont.)

Old CSI Institute Website to be Shut Down

On April 10th, the old CSI website (www.csinet.org) will be permanently forwarded to this website (www.CSIResources.org). Please make sure you update your bookmarks and take a moment to familiarize yourself with the new site if you have not already done so.

Results from CSI's 2017 National Election

The 2017 national election has concluded and the following members are elected to serve on the CSI Board of Directors, with terms beginning July 1, 2017.

Anne Marie Roeper, CSI, CCPR
Cherise Lakeside, CSI, CDT
Jori Bernat-Lipka Smith, CSI, CDT
Kirby Davis, CSI, CDT
Alan Itzkowitz, FCSI, CCS, CCCA
Marvin Kemp, CSI, CDT
Jack Morgan, CSI, CCS, CCCA

Secretary
Director-at-Large
Director from the Southwest Region
Director from the South Central Region
Director from the North Central Region
Director from the Middle Atlantic Region
Director from the Great Lakes Region

If you'd like to read more about the newly elected members of the Board and see a list of all members of the CSI Board of Directors for the FY18 fiscal year please use this link to visit the [Institutes's election webpage](#).

The Construction Specifier Magazine

The Construction Specifier is the official magazine of CSI. Click the photo to the right to read current industry articles and the latest issue.



North Central Region Newsletter

Find out what is happening throughout the region by reading the [NCR monthly newsletter](#).



Locate a Chapter or Region

Click on the map be taken to the chapter locator webpage.



MARVIN
Windows and Doors
Built around you.®

Taylor Neill
Architectural Project Manager -
Chicago
401 State Ave. N.
P.O. Box 100
Warroad, MN 56763

Integrity
from MARVIN
Windows and Doors
Built to perform:

Cell: 312-833-1719
Toll Free: 800-834-7497
Fax: 218-386-4216
e-mail: taylorneill@marvin.com
www.marvin.com

Industry Events

Masonry Monday: Structural Brick Clay Curtain Walls, April 3, 2017

Location: 2140 W. Corporate Dr., Addison, IL, on Monday, April 3, 2017,

Presented by Jeff Elder, SE, Interstate Brick. This program is registered with AIA for 1.0 HSW Learning Unit. There is no charge to attend, but general admission seating (West Classroom) is limited.



Details and registration: <https://goo.gl/IuATc1>.

For additional information contact IMI at (630) 396-3144 or tindelli@imiweb.org.

2017 BIM-M Symposium, May 4, 2017 (Architects) & May 5, 2017 (Contractors)

Location: 2140 W. Corporate Dr., Addison, IL, on Thursday, May 4, 2017 (Architects) and Friday, May 5, 2017 (Contractors). This program is registered with AIA for 7.0 Learning Units. There is no charge to attend, but seating is limited.

Details and registration: <https://goo.gl/DV5IjE>.

For additional information contact IMI at (630) 396-3144 or tindelli@imiweb.org.

DCEO ILLINOIS ENERGY NOW - ILLINOIS ENERGY CODE TRAINING

FREE CEU's provided by Illinois Office of Energy & Recycling for the Illinois construction industry to improve compliance with the 2015 IECC and ASHRAE 90.1-2013.

Six different events held at various locations and dates throughout Illinois:

1. Join us for a 2015 IECC Code Update and receive a copy of the 2015 IECC (FREE!) - Full Day Event
2. Come join us for a Quick Breakfast or Lunch Update! and receive Illinois' full-color guide 'Success with IECC for Builders & Trades' (FREE) - Half day event
3. Residential HVAC Load Calculations - All day event
4. Developing & Reviewing Performance-Based Submittals for Code Compliance - Half day event
5. Game On! Commercial Energy Modeling for Code Compliance - All day event, Chicago Loop Location on March 2 and May 4.
6. Trust But Verify: Understanding Energy Modeling Submissions- Half day event , Chicago Loop Location on April 5 and May 24.

[View all event listings for details and registration>>](#)

Section continued on the next page...

The name that built an industry™ **Cultured Stone®** by Boral®

Sculpt the modern landscape.

With an eye on strong, contemporary designs that elevate trends and create demand, the Contemporary Collection from Cultured Stone® by Boral® serves as the zenith of the modern landscape. And with new additions, including Pro-Fit® Modera™ LedgeStone and Hewn Stone™, this latest extension allows you to create new, inventive designs that exceed your past limits. Keep pushing the boundaries of contemporary architecture and design with the entire Contemporary Collection, only from Cultured Stone® by Boral®.

Holly Hirsch
holly.hirsch@boral.com | 224.250.0317



Industry Events

Carpenter Training Center Open House - Free Booths

Saturday, June 3, 2017, the Chicago Regional Council of Carpenters Apprentice and Training Program will celebrate our 30-Year Anniversary of being located in Elk Grove Village by hosting an Open House at the Carpenter Training Center, 1256 Estes Avenue and the adjacent Annex Building, 1099 Estes Avenue, 9:00 AM - 2:00 PM.

You are cordially invited to join us and display a booth of your company's products, at no cost. There will be booths in both buildings. Free parking. Rain or shine, booths will be indoors.

We expect 4,000 visitors, including contractors, union carpenters, their families, and the general public to attend. Some visitors will be attending for the Open House, some for the Member Appreciation Day, some for the Member Health Fair, and some Architects/Designers/Engineers for the three AIA continuing education presentations (2.5 LU total).

Please contact Assistant Director Craig Triplett for further details regarding your participation at (847) 640-7373, no later than April 19.

[Open House Information >>>](#)



—
YOUR REPUTATION STANDS ON A NAME

So Does Ours

—

Generation after generation, Marvin Windows and Doors has built our reputation through dedication – the same dedication you build into every home. Together, we share a commitment to design, personal attention and the unparalleled ability to customize. As partners, we both draw from these strengths to build a reputation that can be shared.

**CONTACT YOUR LOCAL, INDEPENDENT DEALER
TO DISCOVER THE MARVIN DIFFERENCE TODAY.**

MARVIN 
Windows and Doors

Built around you.®

© 2016 Marvin® Windows and Doors. All rights reserved. ® Registered trademark of Marvin Windows and Doors.
Builder: Seven Custom Homes, Austin, TX

Leadership Directory

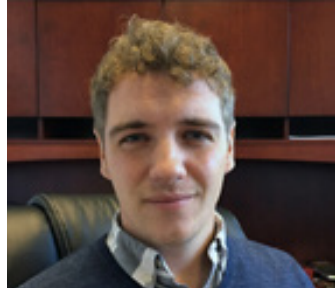
Officers and Directors July 2016 - June 2017



President
[Jeremy Olsen](#)
CSI, CCS, CCCA, AIA, LEED AP



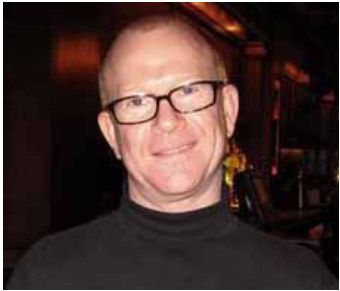
President-elect
[Melissa Gibson](#)
CSI, CCCA, LEED AP



Vice President 2018
[Peter Grotenhuis](#)
CSI, CDT



Vice President 2017
[Scott Conwell](#)
CSI, CDT, FAIA



Secretary 2017
[Stuart Berger](#)
CSI, CCS, AIA



Treasurer 2017
[Deborah Burkhart](#)
CSI, CCS, AIA, LEED AP



Membership Officer 2017
[Chris Walsh](#)
CSI, CDT, LEED GA



Director 2017
[Tim Blatner](#)
CSI, LEED AP



Director 2017
[Kira Rogatnik](#)
CSI, CDT



Director 2017
[Drew Clausen](#)
CSI



Director 2018
[Andrea Baird](#)
CSI, CCCA, AIA, P.E., LEED AP



Director 2018
[Chris Carpenter](#)
CSI, CCPR



Director 2018
[Robert Moretti](#)
MBA, CSI, CDT



Past President 2017
[Elias Saltz](#)
CSI, CCS, LEED AP



N. Central Region Director
[Matthew Nordloh](#)
CSI, CCPR, LEED GA



Executive Director
[Beth Winkler](#)

Board meetings are typically held 1 hour prior to chapter meetings and open to all members to attend. If you would like to attend, send RSVP to csichicagochapter@gmail.com

Leadership Directory Committee Members

Awards - Chapter	Chair	Jeremy T. Olsen, CSI, CCS, CCCA, AIA, LEED AP	Jeremy@daylightstudioarch.com
Awards - Institute	Chair	Elias Saltz, CSI, CCS, LEED AP	Elias@ArchiTechspec.com
Awards - Regional	Chair	Melissa Gibson, CSI, CCCA, LEED AP	mgibson@epsteinglobal.com
By-Laws	Chair	Randall A. Chapple, CSI, CCS, AIA, SE	rchapple@gpchicago.com
Certification	Co-Chair	Dan Smith, CSI, CCPR, LEED AP	Dan.R.Smith@saint-gobain.com
Certification	Co-Chair	Larry Nordin, CSI, CCS, AIA	larry.nordin@scb.com
Certification	Committee	Colin O'Donoghue, AIA, LEED AP BD+C	od.colin@gmail.com
Communications	Chair	Stuart Berger, CSI, CCS, AIA	studiob57@comcast.net
Communications	Newsletter Editor	Beth Winkler	csichicagochapter@gmail.com
Communications	NewsL. Committee	Elias Saltz, CSI, CCS, LEED AP	Elias@ArchiTechspec.com
Communications	Website Editor	Beth Winkler	csichicagochapter@gmail.com
Communications	ECommunications	Randall A. Chapple, CSI, CCS, AIA	rchapple@gpchicago.com
Communications	Graphics	Peter W. Grotenhuis, CSI, CDT	peter@sjmallein.com
Communications	Committee	OPEN	
Continuing Education	Coordinator	Joseph A. Stypka, FCSI, CCS, FAIA	jstypka@jahn-us.com
Continuing Education	Committee	Scott Conwell, CSI, CDT, FAIA, LEED AP	sconwell@imiweb.org
Contractor Engagement	Chair	Heather Rice, CSI	hrice@Hpsubfloors.com
Contractor Engagement	Committee	Patrick J. Duffy, Jr., CSI	pduffy@abuildingproducts.com
Contractor Engagement	Committee	Scott Conwell, CSI, CDT, FAIA	sconwell@imiweb.org
Contractor Engagement	Committee	Jennifer R Friedland CSI, CDT, LEED GA	Jennifer.R.Friedland@saint-gobain.com
CSI2eye	Co-Chair	Kurt Moehlmann, CSI, CDT	rpikurt@aol.com
CSI2eye	Co-Chair	Kira Rogatnik, CSI, CDT	krogatnik@metlspan.com
CSI2eye	Committee	Alan Itzkowitz, AIA, FCSI, CCS, CCCA, NCARB, LEED AP	alan.itzkowitz@gmail.com
Finance Committee	Chair	Deborah Burkhart, CSI, CCS, AIA, LEED AP	dabdab@bus.illinois.edu
Finance Committee	Committee	Stuart Berger, CSI, CCS, AIA	studiob57@comcast.net
Historian	Chair	W. Dean Walker, CSI, CCS, AIA	deanspecs@gmail.com
Historian	Committee	Elias Saltz, CSI, CCS, LEED AP	Elias@ArchiTechspec.com
Membership	Chair	Chris Walsh, CSI, CDT, LEED GA	cwalsh@inprocorp.com
Membership	Committee	Randall A. Chapple, CSI, CCS, AIA, SE	rchapple@gpchicago.com
Membership	Committee	David O'Bryan Jr., CSI, CDT	dobryan@rustoleum.com
Membership	Committee	Missy Ruminski, CSI-EP, Affiliate AIA Chicago	Missy@tuschalleng.com
Membership	Committee	Robert Moretti, MBA, CSI, CDT	rmoretti@tremcoinc.com
Nominating	Chair	Melissa Gibson, CSI, CCCA, LEED AP	mgibson@epsteinglobal.com
Nominating	Committee	Elias Saltz, CSI, CCS, LEED AP	Elias@ArchiTechspec.com
Nominating	Committee	Jeremy T. Olsen, CSI, CCS, CCCA, AIA, LEED AP	Jeremy@daylightstudioarch.com
Nominating	Committee	Kurt Moehlmann, CSI, CDT	rpikurt@aol.com
Partners & Sponsorship	Chair	Drew Clausen, CSI	drew.clausen@owenscorning.com
Partners & Sponsorship	Committee	Scott Conwell, CSI, CDT, FAIA	sconwell@imiweb.org
Partners & Sponsorship	Committee	Peter W. Grotenhuis, CSI, CDT	peter@sjmallein.com
Programs	Chair	Timothy Blatner, CSI, LEED AP	tblatner@fitzgeraldassociates.net
Programs	Committee	Robert Moretti, MBA, CSI, CDT	rmoretti@tremcoinc.com
Programs	Committee	Andrea Baird, CSI, CCCA, AIA, P.E., LEED AP	albaird@rrj.com

Committee members continued on the next page...

Leadership Directory Committee Members (cont.)

Roundtable - Industry	Chair	Scott Conwell, CSI, CDT, FAIA	sconwell@imiweb.org
Roundtable - Industry	Committee	Matthew Nordloh, CSI, CCPR	mattn@integratingproducts.com
Roundtable - Industry	Committee	Robert Moretti, CSI, CDT	rmoretti@tremcoinc.com
Roundtable - Industry	Committee	Chris Carpenter, CSI, CCPR	ccarpenter@pella.com
Roundtable - Meet the Rep	Chair	John Birazzi, CSI, CDT	jbirazzi@kleinandhoffman.com
Roundtable - Meet the Rep	Committee	Pat Ruban, CSI	patruban10@yahoo.com
Roundtable - Meet the Rep	Committee	Kurt Moehlmann, CSI, CDT	rpikurt@aol.com
Roundtable - Specifier	Chair	Melissa Marie Gibson, CSI, CCCA, AIA, LEED AP	mgibson@epsteinglobal.com
Roundtable - Specifier	Committee	James Cross, CSI, CCS, AIA	j.cross@studiogc.com
Roundtable - Specifier	Committee	Randall A. Chapple, CSI, CCS, AIA	rchapple@gpchicago.com
Roundtable - Specifier	Committee	Larry Nordin, CSI, CCS, AIA	larry.nordin@scb.com
Roundtable - Summer Series	Chair	Jeremy T. Olsen, CSI, CCS, CCCA, AIA, LEED AP	Jeremy@daylightstudioarch.com
Roundtable - Technical	Chair	Elias Saltz, CSI, CCS, LEED AP	Elias@ArchiTechspec.com
Roundtable - Technical	Committee	Jeremy T. Olsen, CSI, CCS, CCCA, AIA, LEED AP	Jeremy@daylightstudioarch.com
Roundtable - Technical	Committee	Elaine Fitzgerald, CSI, CCS	elaine Fitzgerald@comcast.net
Roundtable - Technical	Committee	Andrea Baird, CSI, CCCA, AIA, P.E., LEED AP	albaird@rrj.com
Roundtable - Technical	Committee	Robert Moretti, CSI, CDT	rmoretti@tremcoinc.com
Social	Chair	Kristin Henriksen, CSI, CDT	k_henriksen14@yahoo.com
Social	Committee	Kira Rogatnik, CSI, CDT	krogatnik@metlspan.com
Social	Committee	Taylor Neill, CSI	taylorneill@marvin.com
Social - Young Professionals	Committee	Rebecca Greenberg, CSI, CDT	rgreenberg@esadesign.com
Social - Young Professionals	Committee	Noi Phonexayphova, CSI, CDT	sphonexayphova@gmail.com
Social - Young Professionals	Committee	Charles Arko, CSI, CDT	charlesarko@hotmail.com
Social Media	Chair	Holly Hirsch, CSI	Holly.Hirsch@boral.com
Social Media	Committee	Thad Goodman, CSI, CDT	thadg@nationalgypsum.com
Social Media	Committee	Wesley Sherrer, CSI	wesley.sherrer@momentive.com
Social Media	Committee	OPEN	
Student Outreach	Chair	Peter W. Grotenhuis, CSI, CDT	peter@sjmallein.com
Student Outreach	Committee	Scott Conwell, CSI, CDT, FAIA	sconwell@imiweb.org
Student Outreach	Committee	Jeremy T. Olsen, CSI, CCS, CCCA, AIA, LEED AP	Jeremy@daylightstudioarch.com
Technical	Chair	Randall A. Chapple, CSI, CCS, AIA	rchapple@gpchicago.com



For the Want of a Horseshoe Nail: Identifying causes of tile failure

By: Howard Jancy, CSI, CDT

A folk rhyme often attributed to Benjamin Franklin describes the unintended outcome of simply omitting a horseshoe nail—namely, the loss of a kingdom:

For the want of a nail the shoe was lost,
For the want of a shoe the horse was lost,
For the want of a horse the rider was lost,
For the want of a rider the kingdom was lost,
And all for the want of a horseshoe-nail.

This proverb illustrates a basic truth—quick and poorly thought-out decisions have consequences beyond the initial myopic moment. Though the rhyme is not modern in origin, its maligned nail is often the culprit in today's construction failures. The 'nail' in this narrative, for example, is expansion and movement joints, and the unintended outcome is the failure of a building's tiled exterior.

A project located in a Midwestern city provides an excellent example to illustrate this point.

[Read full article from *The Construction Specifier*>>>](#)

Construction Costs: Unknown

By: Elias Saltz, CSI, CCS, LEED AP, SCIP

In my very first post on this site, the one titled, "[Is Construction Broken?](#)" I listed a few ways in which the profession of architecture is contributing to the ways in which construction is broken and needs to be fixed. I'm providing the link so readers can go back and refresh their memories on the whole discussion but for the rest of this post I will be addressing one observation, which reads in part:

"(Most but not all) Architects have very poor knowledge of how much construction costs, and use loose rules of thumb to try to determine whether or not their designs are within their clients' budgets. They rarely know how the details they create affect the project cost, and the resulting necessary Value Engineering (VE) costs them time, money and prestige."

As I've thought more about this, it occurs to me that this is one of the biggest problems facing the profession.

[Read full article on *Let's Fix Construction*>>>](#)

Spock as a specifier

By: Sheldon Wolfe, RA, FCSI, CCS, CCCA, CSC

In our never-ending search for truth in specifications, we often lose sight of reality. We're inundated with advertising, product data, test reports, and white papers; where once specifiers complained about a lack of information, we now struggle to keep up with what we receive. We can't know what we don't know, and we have no time to evaluate what we have seen. As if that weren't bad enough, we often find that what we thought we knew isn't true.

As an example, consider building insulation. The way it works and its value have been understood since antiquity, and until recently we have felt comfortable with evaluating, specifying, and detailing various types of insulation. And then everything began to unravel.

[Read full article on *Constructive Thoughts*>>>](#)

The Closeout Zurich North America Headquarters

Submitted by: Randall Chapple AIA, SE, CSI, CCS, LEED AP | Goettsch Partners

Completion Date: September 2016

The new 783,800-square-foot Zurich North America Headquarters is designed to reflect the company's global reach and world-class stature. The complex is located on a prominent 40-acre expressway site, a small portion of what was once the more than 300-acre Motorola campus in the 1960s. The formal architectural resolution strives to represent both strength and stability, which are core values of the Zurich business model. Composed of three primary "bars" that are offset and stacked, the arrangement creates unique spaces for collaboration, opens views of the surrounding landscape, optimizes solar orientation for amenities, and provides programmatic flexibility not found in typical center-core office buildings. The top "bar" of the complex soars 11 stories and cantilevers toward downtown Chicago, providing visual identity along the interstate while projecting the strength and future focus of the company.

Home to roughly 3,000 employees and contractors, the headquarters is designed as a campus-like environment with a variety of spaces. Unique interior layouts feature an emphasis on views, sunlight and flexible programming options. To ensure that the headquarters would best meet employees' needs, Zurich built an entire test floor two years prior to completion and asked 150 employees to spend 12 weeks testing four different work environments, including furniture, technology, organization and layout. Opinions and results were gathered via surveys, town-hall meetings and group feedback. Ultimately, the data helped drive decisions to include a number of social hubs (dining area, fitness center and a performance auditorium) and



private enclaves (areas for individual, focused work), as well as sit-stand desks for all employees.

The project emphasized a holistic, integrated approach to sustainability, involving the full project team, as well as a strong commitment from Zurich to engage employees throughout the process. Select sustainable initiatives include multiple green roofs, high-performance facades, rainwater harvest and reuse systems, automated solar shades, and natural prairie landscaping. A network of horizontal sunshades clads the perimeter of the complex, with the sunshades varying in depth depending on orientation, while floor-to-ceiling glass offers extensive natural light for the shallow office plates. A soaring three-story double wall faces south toward the multi-level plazas, showcasing an architecture that responds to the changing Chicago climate. These green features combined to earn the project LEED Platinum certification. In the end, a timeless material palette married to a bold, clear form creates a unique identity for the Zurich headquarters that embodies the core values of the company.

PROJECT TEAM

Client: Zurich North America

Developer/Design-Builder: Clayco

Client Representative: JLL

Architect: Goettsch Partners

Interior Design & Workplace Strategy: CannonDesign

Interior Contractor: Executive Construction Inc. (ECI)

Structural Engineer: Halvorson and Partners, a WSP/
Parsons Brinckerhoff company

Landscape Architect: Hoerr Schaudt Landscape Architects

Civil Engineer: V3 Companies

Sustainability Consultant: Thornton Tomasetti

Photo Credit: James Steinkamp Photography

[Sign up to showcase your project in *The Closeout* >>>](#)

