

February 2017

CHANGE ORDER

CONSTRUCTION SPECIFICATIONS INSTITUTE — CHICAGO CHAPTER



Young Professional Night

The Young Professionals Committee hosted a Rapid Fire Presentation night on January 12th, at Jaks Tap in the West Loop. This well attended event brought together just over 60 young professionals and their mentors for pizza and drinks while showcasing a variety of topics centered around the theme of new technologies that are improving our industry. The presentations were delivered in a rapid-fire format style with auto advancing slides allowing just over 6-1/2 minutes to present. Presenters covered a variety of topics, from aerial drones to virtual reality, and how their companies are exploring new technology to

CONTINUE READING...

QUICK LINKS

[UPCOMING EVENTS](#)

[CERTIFICATION](#)

[PRESIDENT'S LETTER](#)

[SPONSORSHIP OPPORTUNITIES](#)

[MEMBER NEWS](#)

[CHAPTER NEWS](#)

[LEADERSHIP DIRECTORY](#)



Chicago Chapter
Founded 1953

773-466-4147

csichicagochapter@gmail.com

<http://chicago.csinet.org>



TABLE OF CONTENTS

PRESIDENT'S LETTER
CERTIFICATION
MEMBER NEWS
 ANNIVERSARIES AND NEW MEMBERS
 MEMBER SPOTLIGHT
 BEYOND THE CHAPTER
CHAPTER NEWS
 EVENT RECAP
HOT TIP OF THE MONTH
SPONSORSHIP AND MARKETING
 UPCOMING OPPORTUNITIES
 PARTNERSHIPS AND MARKETING
INSTITUTE AND REGIONAL NEWS
INDUSTRY EVENTS
JOB OPPORTUNITIES
LEADERSHIP DIRECTORY
 OFFICERS AND DIRECTORS
 COMMITTEE MEMBERS
CONTRIBUTED ARTICLES
THE CLOSEOUT



Outstanding Chapter Commendation
Chicago Chapter 12 time award recipient

UPCOMING EVENTS

Addressing Slip Resistance in Flooring Specifications
Specifier Roundtable: Thursday, February 2, 12-1pm

Specification Considerations for Improved Performance of
Fenestration Systems
Technical Roundtable: Wednesday, February 8, 12-1pm

BECx: Building Enclosure Commissioning –
Growing trends toward higher energy performance and operation excellence
Building Enclosure Event: Tuesday, February 28, 2017, Breakfast or Lunch

CSi2eye - Design and Construct Professional - *Limited Spots Left!*
CSi2eye: Thursday, March 16, 2017

SAVE THE DATE

Industry Roundtable: Friday, February 17, 12-1pm
Meet the Reps Roundtable: Friday, February 24, 12-1pm
Young Professional Event: Thursday, April 6, 6pm at Jaks Tap
Bowling Night: Thursday, May 11, 6pm at Lucky Strikes in Chicago
Awards Banquet: Wednesday, May 24, 5:30pm Cliff Dwellers

President's Letter

February 2017

Happy February to you all. We're getting into that part of the program year where we deliver some of our signature programs that people from all over Chicagoland's building community look forward to with eager anticipation. This month we host our annual [Building Enclosure Event](#) at Maggiano's restaurant downtown, serving up 2 hours of steaming hot continuing education along with a delicious breakfast buffet or a family style lunch (you have your choice of sessions). We always end up with a large and diverse audience, because we always bring in a great speaker. This year is no exception, as we welcome John Runkle, a Building Enclosure Commissioning (BECx) expert from Intertek-ATI. I'm looking forward to learning more about this increasingly important topic.

In March, we host the [CSi2eye event](#) on Thursday the 16th. We arrange brief one-on-one discussions for 21 of the top building product manufacturers, with around 30 architects and specifiers seeking to learn about new innovative product offerings in a "No BS" environment.

The manufacturers bring their in-house technical experts to answer meaningful questions of the real-world applications of the products, limitations etc. I have participated a couple times in the past and each time I have gained a wealth of information and made great contacts with many sources that I now consider "go-to" resources when I am designing and specifying my projects. I strongly encourage any architect, designer, specifier, or specifying engineer to apply to join us for a full day or half day. You get to prioritize which vendors you most want to meet with, and our team sets you up on appointments with those vendors in a speed-dating style arrangement.



Spring is also the time of year when we go on fun and educational field trips, and we have several great ones planned. We have trips to UL Labs on Northbrook, Ozinga's concrete plant in Chinatown, and a site visit to the new Chicago Blackhawks training facility in the works for this Spring.

Our annual Spring [CDT \(Construction Documents Technologist\) certification exam prep course](#) is in full swing at the offices of Norcon Inc, a general contractor firm in River West. The CDT class meets once a week after work for eleven weeks to prepare participants for taking the CDT exam, offered by CSI in exam "windows" each Spring and Fall. Each week the course

President's letter continued on the next page...

NEED SUBFLOOR SOLUTIONS? WE'VE GOT YOU COVERED.

- PRIMERS AND MOISTURE MITIGATION SYSTEMS
- REPAIR, PATCHING, AND SMOOTHING COMPOUNDS
- FLOOR LEVELING COMPOUNDS AND UNDERLAYMENTS
- WATERPROOFING MATERIALS
- ADHESIVES



The best floors are based on subfloors from



HPS NORTH AMERICA



Toll Free: 855.391.2649 www.hpsubfloors.com



1563 Hubbard Avenue
Batavia, IL 60510

tel (800) 338-3355
ext 200838

cell (630) 788-0969
fax (330) 875-1700

Matthew Reed

Market Development Manager

Sr. Certified DuPont™ Tyvek® Commercial Specialist

mreed@parksite.com

Chapter Partners

PLATINUM PARTNERS



COMMERCIAL
SOLUTIONS

GOLD PARTNERS

Cultured Stone® by Boral®



HÄFELE



SILVER PARTNERS

ArchiTech
CONSULTING, INC.



ALLEGION



NORCON
Inc.



RULON INTERNATIONAL



President's Letter (Cont.)

content is taught by a seasoned expert instructor and involves a fun and lively discussion. We have a bumper crop of smart, dedicated individuals taking the class this year, and we are sure they will do great when they take the test. By wanting to obtain the CDT certification, they are demonstrating a commitment to advancing their knowledge and their reputation in the industry, and we at CSI Chicago tip our hats to them- Good Luck!

So please take a few minutes to read the newsletter and register for a couple of our hot spring events- they're sure to speed the thaw! Have a great month and I look forward to seeing you at an event soon.

Jeremy Olsen CSI, CCS, CCCA, AIA, LEED AP

Mark R. Nelson
President

Nelson Testing Laboratory
717 Industrial Drive
Elmhurst, IL 60126

Ph.: 630-501-0230
Fax: 630-501-0270

mnelson@nelsontesting.com
www.nelsontesting.com

Taylor Neill
Architectural Project Manager -
Chicago
401 State Ave. N.
P.O. Box 100
Warroad, MN 56763

Cell: 312-833-1719
Toll Free: 800-834-7497
Fax: 218-386-4216
e-mail: taylorneill@marvin.com
www.marvin.com

Addressing Slip Resistance in Flooring Specifications Specifier Roundtable: Thursday, February 2, 2017



This month we will be discussing writing flooring specifications to meet the murky legal definition of and requirements for “slip resistance.” The discussion will focus on historical industry standards and practices, criteria to consider when specifying performance requirements, determining which testing procedures to require in project specifications, and where the flooring industry is headed with clarification of performance standards.

Moderated by: Randall Chapple AIA, SE, CSI, CCS, LEED AP | Goettsch Partners
Melissa Gibson, NCARB, CSI, CCCA, LEED AP BD+C | Epstein

Learning Objectives:

- Learn the vagueness of “slip resistance” requirements and review how the legal definition has evolved over time.
- Summarize prevalent slip resistance testing standards and the pros and cons of using each to specify performance requirements.
- Discuss specification practices for defining slip resistance requirements and testing.
- Understand quality assurance and control practices that may help manage liability and decrease the likelihood of performance failures.

Time: Noon – 1 PM

Location: Epstein, 600 West Fulton Street, Chicago

Or by Skype login on your computer. Log in information e-mailed in advance.

Continuing Education: 1.0 AIA/CES/HSW LU



[Click Here to Register](#)

Reservations: Required by January 31, 2017. Limited seating available on a first come basis, with priority given to CSI Chicago members. Non-members requesting to attend in person will be added to a waiting list until members are accommodated. Notification of available non-member in person seating is sent at least two business days in advance.

If your plans change and you cannot honor a reservation, please contact the Chicago chapter so we can offer your seat to someone on the waiting list. Attendance and webcast is complimentary to members and non-members.

Webcast for members/nonmembers is available and instructions will sent 2 days prior to the roundtable. Webcast information will be sent to anyone who is not able to get an in person seat

Email: csichicagochapter@gmail.com or call 773-466-4147

About CSI Specifiers Roundtables: Sessions are held in an informal setting to encourage dialog and attendees are welcome to bring a snack or lunch. Specifier roundtables are a forum for specifiers and architects to discuss specification topics, exchange ideas and share lessons learned. Experienced, as well as new specifiers, are encouraged to attend these small group sessions that require participation and input by attendees.

Specification Considerations for Improved Performance of Fenestration Systems

Technical Roundtable: Wednesday, February 8, 2017



The in situ performance of fenestration systems is frequently inferior to specified performance criteria due to many factors including inadequate detailing during the design phase, variation of installation methods, and imperfect jobsite conditions. This roundtable discussion will focus on several options that specifiers can take during the design phase to increase the likelihood of satisfactory performance of fenestration systems during their service life.

Presented by: Patrick Reicher, S.E., REWC, REWO, CCS, CCCA | Rath's, Rath's & Johnson, Inc.

Learning Objectives:

- Review current industry standards and publications related to the design and installation of windows.
- Identify typical specification paragraphs related to window performance, installation, and field quality control; and considerations to improve specifications and in-service window performance.
- Discuss the importance of proper construction sequencing, and how designers can include sequencing information within specifications or drawings.
- Identify field test methods for air infiltration and water leakage, and means for designers to provide unambiguous field quality control specifications.

Time: 12:00pm – 1:00pm

Location: Daltile Tile & Stone Chicago Gallery, 316 W. Hubbard St., Chicago

Continuing Education: 1.0 AIA/CES/HSW LU



[Click Here to Register](#)

Reservations: Required by Feb. 5. Limited seating available on a first come basis. Complimentary to members and non-members. Non-members requesting to attend will be added to a waiting list until members are accommodated. Notification of available non-member spaces is sent two business days in advance. If your plans change and you cannot honor a reservation, please contact the Chicago chapter so we can offer your seat to someone on the waiting list.

Email: csichicagochapter@gmail.com or call 773-466-4147

About CSI Technical Roundtables: Technical roundtable topics are geared toward architects, specifiers, and others involved in the design and construction process as well as manufacturer representatives interested in the product category/technical issue. Small groups encourage dialog, and attendees are welcome to bring a snack or lunch.

Building Enclosure Commissioning
14th Annual Building Enclosure Event: February 28, 2017

**BECx: Building Enclosure Commissioning –
Growing Trends Toward Higher Energy Performance
and Operation Excellence**

Presented by: John Runkle, P.E.
Vice President - Building Science Solutions
Interek - Architectural Testing, Inc.

Today's industry demands faster construction with better and cheaper buildings, making BECx more vital in achieving high performance. Understand how BECx enhances project performance and the application of building enclosure-related testing, from laboratory to field, as Mr. Runkle discusses the pertinent codes and standards, building science concepts and current material science which serve as a foundation to this new practice area.

[Learn more about this event and see the learning objectives >>>](#)

Date: February 28, 2017

Location: Maggiano's, 516 N Clark St, Chicago, IL 60654

Continuing Education Units: 2.0 AIA/CES/HSW LU

Morning Session*:

7:15-7:45-Registration/breakfast buffet

7:45-10:30am-Program

Lunchtime Session*:

11:15-Registration

11:45am-12:15pm-Lunch

12:15-3:00pm-Program

Cost for one session:

Members and Industry Partners \$40

Non-members \$48

*Breakfast and lunch sessions will be similar presentations.

[**Register for Breakfast Session**](#)

[**Register for Lunch Session**](#)

Presented by:



*Building Knowledge
Improving Project Delivery
Chicago Chapter - Founded 1953*

- For 13 years, this event has featured expert national and international Building Enclosure industry practitioners and researchers.
- Architects, contractors, engineers, manufacturer representatives, owners, project managers, specification writers, and other design and construction professionals will benefit from the technical knowledge presented.
- Take advantage of this high level presentation to earn continuing education credits.
- Register early to assure your attendance as this event is expected to fill to capacity.

Event Sponsors:

DuPont™

Tyvek®

distributed by **Parksite**

ROXUL®
The Better Insulation™



Oldcastle
BuildingEnvelope®



Building Enclosure Commissioning Building Enclosure Event: February 28, 2017



About the speaker: John Runkle is the Vice President of Building Sciences Solutions for Architectural Testing, Inc., an Intertek company. He manages offices throughout North America and staff in the Middle East and China. Mr. Runkle has worked on new construction and retrofit projects for commercial, industrial and residential structures in most of the 50 states and several countries.

John serves as the Building Commissioning Association's liaison to ASTM and has served as Vice President of the National Capitol Chapter for many years. He actively participates in the BCA and is presenter several times a year. He is a graduate of the Pennsylvania State University with a degree in Civil Engineering and is a licensed professional engineer in multiple states.



John brings over 15 years of experience as a building enclosure consultant and enclosure commissioning provider and has been integral in the development of the practice area of building enclosure commissioning both domestically and internationally. His areas of expertise include roofing, claddings, fenestration and below grade waterproofing.

In his role at Intertek-ATI John manages the commissioning and consulting activities for multiple disciplines including building enclosure, fire protection and life safety, security, technology, structured cabling, acoustics and audio-visual systems.

Industry Promotional Partners:



AIA
Chicago



AIA
Northeast Illinois



**Building
Enclosure
Council**
CHICAGO

CAC BUILDING ENVELOPE FOUNDATION
A NOT-FOR-PROFIT 501 (C)3 ILLINOIS CORPORATION
309 East Rand Road, Suite 342, Arlington Heights, IL 60004
www.cac-bef.org



IFMA™ Northern Illinois
Chapter
International Facility Management Association



ILLINOIS

The Construction Specifications Institute
NORTHERN ILLINOIS
chapter

CSi2eye: One-on-One Technical Education Event
Design and Construction Professional Attendance
Thursday, March 16, 2017



CSi2eye returns for a 4th year as design and construction professionals and manufacturers will come together for the day to exchange technical knowledge and ideas.

Designers, Specifiers, Contractors, Consultants, Owner's reps, etc. - anyone who selects and specifies materials and systems for their firms - needs to attend this event:

- **Meet with many suppliers** - No interruptions, no schedule changes
- **High level technical representatives** will be attending the event
- **Expand your contact base** with reliable and knowledgeable representatives who can answer your questions when they come up on your projects.
- **Learn about new and innovative products**, systems or capabilities currently on or coming to the market.
- **Win a \$500 Visa gift card** - two \$500 gift cards raffled off to design/construction attendees, one after morning session and one after afternoon session
- **1.0 AIA/CES/HSW LU Presentation** from Mark S. Graham, NRCA Technical Director on *Long Term Performance and Aged R-Value of Polyisocyanurate Insulation* (see next page for details)
- **Complimentary meals, snacks and drinks** - breakfast, lunch, snacks and drinks, including our post-event cocktail reception.

Date: Thursday, March 16, 2017

Location: East Bank Club, 500 North Kingsbury Street, Chicago

Schedule: 8:00am-5:15pm Full day or half day attendance option.

Cost: Complimentary to Design and Construct Professionals.

[Design and Construction Professionals Register Now >>> Limited Seats Remain!](#)

Registration ends February 10, 2017 or when space fills. Register now for full or half day attendance.
CSI membership is not required for this event.

2017 Exhibitors

[3M Renewable Energy Division – Conservation](#)
[Activar Construction Products Group \(ACPG\)](#)
[Advanced Building Products](#)
[East Coast Metal Systems](#)
[AL13 Architectural Systems](#)
[Chicago Flameproof & Wood Specialties](#)
[Kingspan](#)
[Knight Wall Systems](#)
[Lange Bros. Woodwork Co., Inc](#)
[Mosa](#)
[NABCO Entrances, Inc.](#)

[Pecora Corporation](#)
[PROSOCO, Inc](#)
[ROCKFON](#)
[Roxul USA Inc.](#)
[Sage Glass](#)
[Sika Corporation](#)
[Specialty Products Group](#)
[Viracon](#)
[Wojan Window & Door](#)
[YKK-AP AMERICA](#)

[More Details about the Event >>>](#)

Meeting Attendance/Schedules: During registration, you have the option of attending full day, morning, or afternoon. Prior to the event, you will be given a meeting match up survey where you will have an opportunity to rank your interest in the attending manufacturers. Meeting match-ups will be made based on the survey results.

Representatives per Firm: We try to limit attendance to a maximum of 2 representatives per firm. If a firm would like to send more than two representatives, please contact us about putting additional people on the waitlist.

Cancellations: If you need to cancel or change your attendance at the event after February 10, 2017, we ask that you send an alternate representative to attend in your place.

Please contact Chicago CSI with any questions at: csichicagochapter@gmail.com or 773-466-4147

Long Term Performance and Aged R-Value of Polyisocyanurate Insulation

Thursday, March 16, 2017



Mark S. Graham, NRCA Technical Director, presents the latest technical research on polyisocyanurate insulation. Mr. Graham is at the forefront of the recent testing processes of polyiso and the resulting aged R-values. He will elucidate the why's, how's and what's of the research/testing for polyiso roof insulation. He is eminently qualified to provide up to date research, anecdotes and lessons learned about this topic and will provide guideposts and insights to where polyiso and other roof insulations are headed in the future. Mr. Graham will also provide additional guidance and lessons learned on the use of air/vapor barriers in roofing assemblies.

Presenter: Mark S. Graham, Vice President, Technical Services
National Roofing Contractors Association (NRCA)

Learning Objectives:

- Obtain the latest information the recent testing results and the use of polyiso insulation.
- Understand how to design roofing assemblies with polyiso insulation.
- Receive the latest information on the long term performance in polyiso insulation.
- Review latest technical update on the design and use of air/vapor barriers in roofing assemblies.



Continuing Education: 1.0 AIA/CES/HSW LU

Time: 12:00pm - 1:15pm

Cost: Complimentary with CSi2eye participation. Includes lunch.

Participation in this program requires half or full day attendance to CSi2eye technical education event.

Design and Construction Professionals: [Review CSi2eye details, exhibitor list and register to attend here >>>](#)

Registration is now closed to manufacturers.

About the Speaker: Mark S. Graham holds a Bachelor of Science degree in Architectural Engineering from the Milwaukee School of Engineering. In 1984, he began his career in the roofing industry when he joined F.J.A. Christiansen Roofing Co. Inc. in Milwaukee as an estimator and project manager. In 1986, he joined Wiss, Janney, Elstner Associates Inc., in Northbrook, Ill., as a project engineer specializing in the investigation, design and repair of roof and waterproofing systems.



Graham joined NRCA in 1993 and is responsible for the association's Technical Services Section. Responsibilities of this section include response to inquiries for technical information and assistance, serving as the association's technical liaison with outside organizations, and developing and maintaining the association's technical documents, including The NRCA Roofing and Waterproofing Manual. Graham is the staff liaison to NRCA's Technical Operations Committee and Manual Update Committee. He also is contributing editor for Professional Roofing magazine.

Graham is a member of the American Society for Testing and Materials (ASTM) and is active in ASTM Committees D-8—Roofing and Waterproofing, C-16—Thermal Insulation, E-5—Fire Standards, and E-6—Performance of Buildings. He also is a member of the American Society of Heating, Refrigerating and Air-Conditioning Engineers Inc., International Code Council and National Fire Protection Association.

[List of technical articles and papers written by Graham >>>](#)

Registration is now open for the Spring 2017 exam cycle.

CSI is the construction community's authority on communication and construction documentation. Through CSI's Certification Program, you can develop a conceptual understanding of the entire construction process, and concrete skills in:

- Construction documentation development and administration
- Specification writing and enforcement
- Product research and sourcing
- Communication with the design and contracting teams

CSI's Construction Documents Technologist (CDT) certificate is a prerequisite to CSI's Certifications: Certified Construction Contract Administrator (CCCA); Certified Construction Specifier (CCS) and Certified Construction Product Representative (CCPR).

Spring 2017 Exam Registration Schedule: Testing March 27th to June 2nd

Standard Registration – January 25th to February 27th, 2017

Final Registration – February 28th to March 14th, 2017

[More Information on the CDT exam, testing dates and fees >>](#)

Thank you to our CDT Exam Study Class Sponsors:



[Sponsorship spots still available>>>](#)

Member News

Anniversaries and New Members

Continuous years with CSI...

- 37 Kurt Moehlmann, CSI, CDT**
23 Fred Burr, CSI
Superior Mason Products LLC
- 20 Eric Penney, CSI, AIA, LEED AP**
15 Raymond Hartshorne, CSI, CCCA
Hartshorne Plunkard LTD.
- 13 Marco Rodriguez, CSI, CDT**
K2N Crest
- 13 David Kite, CSI, CCCA, AIA, LEED AP**
11 Laurie Woolverton, CSI, CCS, LEED AP
C/O Interactive Design
- 9 Larry Nordin, CSI, CCS, AIA, LEED AP**
Solomon Cordwell Buenz
- 8 Cornelius Stob, CSI**
NABCO Entrances, Inc.
- 8 Kira Rogatnik, CSI, CDT**
7 Ronald Harrison, CSI, CDT
6 Laura Gagliano, CSI, AIA, Assoc. AIA
ALLEGION
- 5 Jason Schaum, CSI, CDT**
Rulon International
- 5 Kellan Dillon, CSI, CCPR**
Andersen Corp./Andersen Windows and Doors
- 5 Rand Matney, CSI**
PPG-Protective & Marine Coatings
- 5 Thomas Plaskota, CSI, CDT**
H.B. Fuller Construction Products
- 5 Richard Pagano, CSI, CDT**
Wojan Window & Door
- 3 Louis Georgetta, CSI**
National Gypsum
- 3 Thomas Tometz, CSI**
Tometz Select Architectural Products
- 3 Tamika Reed, CSI, CDT**
RTKL Associates, Inc.
- 1 Richard Christine, CSI**
ASSA ABLOY
- 1 Jessica Newell, CSI**
Sherwin Williams
- 1 Ron Filarski, CSI**
Valspar
- 1 Emily Van Tassel, CSI**
1 Brian Shores, CSI
James Hardie Building Products
- 1 Stephen Silva, CSI**

Welcome New Members...

Mitch Hawkins, CSI-EP
Robert Royce, CSI, AIA, ALA
Matthew Hartman, CSI-EP
Paul Larson, CSI
John Stelter, CSI
The EFCO Corporation

Timothy Kennedy, CSI-EP, Assoc. AIA, M. Arch
Steve Leach, CSI
Kingspan

Michael Hines, CSI
Hartshorne Plunkard Architecture

Patrick Peterson, CSI, ASLA, RLA, USGBC
Kathryn St Joseph, CSI, CDT
Lotte Advanced Materials USA

Section continued on the next page...

The Right Materials



The Right Way

Constructed by Experienced
Union Craftworkers and
Contractors

For answers to your masonry
questions, call 1-800-IMI-0988

International team
Masonry Institute



Scott Conwell, FAIA, CDT, LEED AP BD+C
2140 W. Corporate Drive, Addison, IL 60101
Phone: (630) 396-3144 EMail: sconwell@imiweb.org
www.imiweb.org

Let's Celebrate Together

Share your personal or professional achievements by notifying the chapter at csichicagochapter@gmail.com for inclusion in the following month's newsletter.

Elias Saltz, CSI, CCS, LEED AP, past president for the Chicago Chapter, has taken a position as a Specifier at ArchiTech Consulting, Inc. ArchiTech specializes in consulting, technical publishing and information management for project specifications, master specification, quality control and technical research. Elias looks forward to being able to make use of his experience and expertise to serve ArchiTech's broad range of clients and project types. He can be reached at (224) 345-3450 or Elias@ArchiTechspec.com.

Larry Church, P.E., CSI-CDT, LEED AP BD+C, FACI, has a new position as Senior Consultant with DESMAN. DESMAN is a leading national specialist in transportation improvements and the planning, design, and construction administration of functionally efficient, attractive and cost effective parking facilities. Larry provides parking consulting, design for parking repair, restoration, and maintenance, and technical expertise in design and specification of concrete materials. Larry is a Fellow of the American Concrete Institute (FACI) and an active member of other industry associations such as ASTM, USGBC, PCI, ICRI, and NPA-PCC. Larry stays active in ACI and industry developments for Service Life Prediction and Modeling, Performance Criteria for Ready-Mixed Concrete, Sustainability of Concrete, and other ACI committees publishing industry guides and standards for use in project specifications, master specifications, quality control and technical research. Larry can be reached at (312) 263-8400 or LChurch@desman.com.



—
YOUR REPUTATION STANDS ON A NAME

So Does Ours

—

Generation after generation, Marvin Windows and Doors has built our reputation through dedication – the same dedication you build into every home. Together, we share a commitment to design, personal attention and the unparalleled ability to customize. As partners, we both draw from these strengths to build a reputation that can be shared.

**CONTACT YOUR LOCAL, INDEPENDENT DEALER
TO DISCOVER THE MARVIN DIFFERENCE TODAY.**

MARVIN 
Windows and Doors

Built around you.®

© 2016 Marvin® Windows and Doors. All rights reserved. ® Registered trademark of Marvin Windows and Doors.
Builder: Seven Custom Homes, Austin, TX

Member Spotlight

Robert Moretti MBA, CSI, CDT



Bob Moretti works for Tremco Roofing and Building Maintenance as a roof advisor and architectural and technical specialist. He is responsible for providing jobsite supervision services in addition to working with design professionals on the selection, design, and specification of roof membrane systems and qualifying roof restoration projects. What Bob enjoys most about working at Tremco Roofing is working with design professionals and roofing contractors on complex roofing challenges which require unique solutions.

Prior to joining Tremco Roofing in August of 2011, Bob worked for Bricks Incorporated as an architectural representative for almost five years. Bob has been a member of CSI Chicago for over 5 years, earning his CDT accreditation in 2013; he currently serves as one of the directors of the Chicago chapter. Bob earned an

MBA from Lake Forest Graduate School in Chicago this past June. He coached high school hockey for 10 years in the Chicago area; currently he runs a goalie clinic for the Elmhurst Chiefs on Saturday mornings. When he's not working or coaching hockey, Bob enjoys: playing hockey, running, home improvement projects, riding ATV's and dirt bikes, spending time with family, enjoying the outdoors with his dog, and working on his car and aquarium. Bob and his wife Nicole are expecting their first child, a baby girl, in mid-April.

[Sign up to write a member spotlight >>>](#)

Section continued on the next page...



Because your reputation is on the line every day.

We make DuPont™ Tyvek® CommercialWrap® for professionals who build quality into every job. After all, it's architects and contractors like you who have made us the industry leader for over 25 years. And you're why we continue to develop innovative products, systems and services for the commercial market, like the 10-Year Limited Warranty that gives added peace of mind with every job and the DuPont™ Tyvek® Specialist Network that supports you on and off the site. DuPont™ Tyvek® Weather Barrier Systems—they're all about building a better and even stronger reputation.

For more information contact:

Matthew Reed

Market Development Manager

Senior Certified DuPont Tyvek Commercial Specialist

(630) 788-0969



Tyvek.

DuPont™ Tyvek®: CommercialWrap® • Wrap Caps • Tape | DuPont™: FlexWrap™ • StraightFlash™ • StraightFlash™ VF • Fluid Applied WB

© 2016 DuPont. All rights reserved. The DuPont Oval logo, DuPont™, Tyvek®, Tyvek® CommercialWrap®, FlexWrap®, StraightFlash™ and StraightFlash™ VF are registered trademarks or trademarks of E.I. du Pont de Nemours and Company or its affiliates.

16-0130

Member Spotlight

Tristan d'Estree Sterk, AIA, CSI



Tristan d'Estree Sterk is a faculty member in the Department of Architecture, Interior Architecture and Designed Objects at The School of the Art Institute of Chicago and founder of a small technology office (orambra.com) that develops new construction systems and components for buildings that alter the ways in which buildings perform, act and operate. In particular the office is recognized for developing structural shape change technologies that alter the way that buildings use energy. The office's mission is to develop the knowledge, systems and state-of-the-art products that support tomorrow's building construction sector while enabling people to craft more responsive connections between construction systems, design, users and the natural environment. The first product produced by the office is called Formsolver (formsolver.com), to be launched shortly.

Tristan grew up in Australia and Canada. He is an avid cyclist, basketball player, reader and fascinated by the role that search technologies play in our daily lives.

[Sign up to write a member spotlight >>>](#)

The name that built an industry™

Cultured Stone® by Boral®

Sculpt the modern landscape.

With an eye on strong, contemporary designs that elevate trends and create demand, the Contemporary Collection from Cultured Stone® by Boral® serves as the zenith of the modern landscape. And with new additions, including Pro-Fit® Modera™ Ledgestone and Hewn Stone™, this latest extension allows you to create new, inventive designs that exceed your past limits. Keep pushing the boundaries of contemporary architecture and design with the entire Contemporary Collection, only from Cultured Stone® by Boral®.

Holly Hirsch
holly.hirsch@boral.com | 224.250.0317



HÄFELE

Häfele America Co.

3901 Cheyenne Drive
Archdale, NC 27263-4000
Phone 800 423 3531 x 5818
Fax 336 862 7683
Mobile 331 213 4545
dwarren@hafeleamericas.com
www.hafele.com

DAN WARREN

Regional Director

MOMENTIVE

Wesley Sherrer, CSI

Midwest Region Manager
wesley.sherrer@momentive.com

+ 1 614 392 1015
+ 1 614 314 9217 M

Momentive Performance Materials Inc.
6716 Damson Place
Westerville, OH 43082
www.ge.com/silicones



Beyond the Chapter

Chicago CSI Members activities beyond Chicago Chapter

The following is a list of members of the Chicago Chapter of the Construction Specifications Institute that are volunteering for construction industry activities beyond the Chicago Chapter of CSI.

I hope to receive information regularly to expand this list and keep it current so that we can all be informed as to the breadth of member activities. Please send your construction industry volunteer activity information to me at:

jstypka@jahn-us.com

Thank you,

Joe Stypka

Member

Activities Beyond

Andrea Baird	Chicago CSI's representative judge for the Future Cities Competition 2017
Randy Chapple	Construction Specifications Institute Delegate to the Tile Council of North America (TCNA) Handbook Committee and to the ANSI A108 Accredited Standards Committee for Ceramic Tile Member of the U.S. Technical Advisory Group to ISO Technical Committee 189 on Ceramic Tile Committee member of ASTM E2751/E2751M "Design and Performance of Supported Laminated Glass Walkways"
Scott Conwell	International Masonry Institute (IMI) Delegate to the Tile Council of North America (TCNA) Handbook Committee and to the ANSI A108 Accredited Standards Committee for Ceramic Tile Member of the U.S. Technical Advisory Group to ISO Technical Committee 189 on Ceramic Tile
Jeff Diqui	Building Enclosure Council – Chicago chapter, Program Director Air Barrier Association of America (ABAA) Terminations and Flashings Committee
Renee Doktorczyk	CSI North Central Region, Institute Director Nominating Committee
Peter Grotenhuis	Chicago CSI's representative judge for the Future Cities Competition 2017
Frank Heitzman	Construction Specifications Institute, UDS Program Task Team
Alan Itzkowitz	Construction Specifications Institute, Certification Strategic Group Northern Illinois Chapter CSI, Vice President
Elias Saltz	Construction Specifications Institute, Practice Area Curriculum Committee CSI North Central Region Electronic Communications Chair
Joe Stypka	National Institute for Building Sciences (NIBS), UDS Modules Task Team for the National CAD Standard (NCS) American Institute of Architecture (AIA) MasterSpec Architectural Review Committee American Architectural Manufacturers Association (AAMA) AMC Finishes Committee Member



Sponsor a Member

When current CSI Chicago chapter President, Jeremy Olsen, approached the membership committee last summer he had a radical new idea for increasing the chapter's membership: ask industry members to "sponsor" an architect. Industry participants will "sponsor" a new member by paying the candidate's CSI membership fee for the coming year. We've coined this program "Sponsor a Member" as it is open to sponsoring all types of professional members. The goal is attracting both new and seasoned members of the Chicago-area design community to the chapter.

[Tremco Roofing and Building Maintenance](#), represented by CSI Chicago board member Bob Moretti, was the first to come forward and offer to sponsor a new member. Bob personally selected Tristan d'Estrée Sterk. Bob comments:

I met Tristan during a half-day architectural seminar Tremco Roofing sponsored at IIT in early October. Tristan is a very impressive individual; he's worked for some of the most reputable and prestigious design firms including Busby Perkins + Will, SOM, and Carlos Zapata. He has also worked abroad in London and Vancouver in addition to working in Boston. Tristan educates others as an associate professor at The School of the Art Institute of Chicago. Tristan is the Founder/CEO of Formsolver, LLC., a company offering a very unique piece of software designed to optimize the material and form of a building to reduce its environmental impact. Most importantly, Tristan's professional values, drive, and passion align well with fellow members of CSI Chicago.

Read about Bob Moretti and Tristan d'Estree Sterk in this month's [member spotlight](#).

Section continued on the next page...

We're more than just a paint company

- Extensive National Architectural Program
- Product and Environmental Certifications



Master
Painters
Institute

BEHR
behr.com/architect

Chapter News (Cont.)

Chapter Sponsors Award and Sends Judges to Future City Regional Competition

By: Andrea Baird, CSI, CCCA, AIA, P.E., LEED AP

Future City is a program designed for middle school students that asks students to envision cities of the future. Teams from across the state gathered at the University of Illinois Chicago on January 7th to present their projects. CSI Chicago sponsored a special award for “Best use of Construction Materials”. Special awards judges Peter Grotenhuis and Andrea Baird interviewed each team to learn what they considered innovative materials of the future to include. A common theme was bricks made from compacted trash. CSI judges selected team Miquelon for their consideration of building materials that generate energy.



Team Miquelon awarded CSI Chicago sponsored award of “Best use of Construction Materials”.

Thank you to Kurt Moehlmann, CSI, CDT of RPI, Inc. for sponsoring this award for the chapter again this year!

Thank you to our judges for donating their time for this competition:

Peter W. Grotenhuis, CSI, CDT, Chicago CSI Vice President

Andrea Baird, CSI, CCCA, AIA, P.E., LEED AP, Chicago CSI Director

Donation to Greater Chicago Food Depository

After a successful holiday party, the board has approved a donation amount of \$1500.00 to the Greater Chicago Food Depository. This donation will provide 4,500 meals to the people in our community (figure based on Greater Chicago Food Depository website reporting). A heartfelt thank you to all who participated in one way or another to help provide food to those in need throughout the community. [Read Holiday Party event recap >>>](#)

Give Back to the Chapter, 1 hour at a time

Give the chapter 1-2 hours of your time by contributing an article for our newsletter or signing up to help out at an event (you are coming already anyways!).

These are upcoming tasks that have openings still for the first part of 2017:

- February Hot Tip of the Month for March *Change Order* (no hot tip presentation in February)
- February 28, 2017 - Door Greeter for Building Enclosure Breakfast or Lunch Program
- February 28, 2017 - Photographer for Building Enclosure Breakfast Program
- February 28, 2017 - Building Enclosure Event recap article for March *Change Order*
- *More sign ups for March and beyond also!*

To sign up for one of these, read more about the tasks, or see what is open for 2017 click this link to see our sign up on SignUp.com: <http://signup.com/go/V256ZU>

If you have any questions about the expectations of the various tasks, contact:

Beth Winkler csichicagochapter@gmail.com

Event Recap

Young Professionals Event: January 12, 2017

By: Charles Arko, CSI, CDT

[Article Continued from Cover...](#)

help improve their designs and products. The event brought together both architects and product manufacturers, with the following presentors:

Meridith Ewher, Dsyson
Charles Arko, Solomon Cordwell Buenz
Bob Moretti, Tremco Roofing
Christian Newman, Solomon Cordwell Buenz
Sherrie Saratore, MechoSystems
Georgi Todorov, Pappageorge Haymes
Nate White, bKL Architecture
Scott Conwell, International Masonry Institute

CSI Chicago would especially like to thank our event sponsors for helping make this event possible: [Dyson](#), [International Masonry Institute](#), [MechoSystems](#), [Northfield Block](#), [Sto Corp.](#) and [Tuschall Engineering](#).

Our next young professional event will be on *Lessons Learned* and will be April 6 from 6-9pm at Jaks Tap. Event information and sponsorship opportunities will be available soon!



Northfield
an Oldcastle company

sto



TUSCHALL
ENGINEERING COMPANY, INC.

 team IMI INTERNATIONAL MASONRY INSTITUTE <small>UNION MASONRY CRAFTWORKERS CONTRACTORS & CONSULTANTS</small> www.imiweb.org	<p>Main: 630-396-3144 Direct: 630-396-3106 sconwell@imiweb.org</p> <p>2140 W. Corporate Drive Addison, IL 60101</p> <p>www.imi-illinois.blogspot.com www.masonrydetails.org</p>
<p>Scott Conwell FAIA, CSI, CDT, LEED AP Director of Industry Development & Technical Service</p>	

	<p>Sherrie V. Saratore LEED AP Business Development Manager</p>
	<p>MechoSystems Chicago, IL M: +1 (773) 230-4396 E: sherrie.saratore@mechosystems.com W: mechosystems.com</p>

<p>Hand dryers Lighting Purifiers Hair dryers</p>	<p>Sarah Duran Architectural Specification Manager Dyson Professional</p> <p>E: Sarah.Duran@dyson.com T: 312-237-3953 C: 312-235-9115 F: 312-706-2258</p> <p>600 W. Chicago Ave., Suite 275 Chicago, Illinois 60654 www.dyson.com</p>
	

Check out our [Facebook page](#) for more event photos.

Section continued on the next page...

Event Recap

Chapter Program: January 24, 2017

By: Jeremy Olsen CSI, CCS, CCCA, AIA, LEED AP

On January 24th, the Chapter had a capacity crowd at the East Bank Club to enjoy a presentation on “Delegated Design, and How to Make it Work for You.” As we know, delegated design (and its cousins, design-build and design assist) are increasingly prevalent in the building industry, and it was important and timely for our organization to shed light on this topic.

The presentation was in the form of a panel discussion with four panelists, moderated by our very own Tim Blatner, chairman of the Chapter's Programs Committee. The Panelists were:

- Steve Black, Quality Support Manager for Power Construction, a general contractor in Chicago
- Melissa Gibson, Associate Vice President and Specifier at Epstein, a Chicago based architecture firm.
- J.B. Howell, Senior Regional Sales Manager for Novum Structures, an international manufacturer and installer of architectural enclosure systems, with offices in Menomonee Falls, WI.
- Joseph Tinder, a Structural Engineer and Regional Manager for Larson Engineering, a full-service engineering firm with offices in Chicago and Naperville.



With this diverse panel, each of whom has experienced the delegated design concept from a different point of view, we are able to really explore:

- what delegated design means
- what portions of projects are commonly eligible for delegated design, and what are the implications to related building systems
- why it has become so important to the construction industry
- how it can offer advantages in time & cost to the owner and the building team
- what the potential liability impacts are for each member of the building team
- differences between delegated design, design assist and design-build
- what control over the design is potentially lost as the designers delegate to component engineers and designers
- how to avoid causing confusion and potential change orders with appropriate and comprehensive specification language

Tim started the discussion off with a humorous example of delegated design: Noah's Ark from Genesis (the project manual) and from that starting point, everyone enjoyed a lively and interactive conversation. One gets the sense that we could have done another half hour or more on the topic, but sadly we ran out of time. Here's hoping we can have each of these speakers back for future programs. It was evident that Tim Blatner poured a lot of time and energy into to preparing for this panel discussion and we are all grateful to him for his efforts. Thanks to all



Article continued on the next page...

Event Recap Chapter Program (Cont.)

our panelists for shedding light on this sometimes confusing and evolving element of project delivery in the 21st Century.

In March, we will be hosting a panel discussion on the “State of Architectural Education in Chicagoland,” with leaders from each of the local architectural school programs giving presentations on where they see their programs headed in the coming years. It will be held at the East Bank Club on Tuesday March 28th. Please save the date.

Thank You Tabletops

Thank you to our tabletops for putting on a great show at the program and for sponsoring our tabletop raffle. Tabletop visitors were encouraged to drop a business card in the raffle bags at each table and each tabletop drew one winner to receive an Amazon gift card.



Tabletops

Airolite
Inpro® Interior and Exterior Architectural Products
Modernfold Chicago, Inc.
Terrazzo Marble & Supply
Waggoner Brenia Associates

Raffle Winners

Scott Coppinger, *Jimmy'Z Masonry Corp.*
Jerry Bruti, *CTA*
Juan Calahorrano, MBA, *HACIA*
Larry Nordin, AIA, CSI-CCS, *SCB*
Molly O'Hara, CCS, *Heritage Tile*

Pictures courtesy of Scott Conwell, CSI, CDT, FAIA, LEED AP

Check out our [Facebook page](#) for more event photos.

[Sign up to write an event recap >>>](#)

Bold Visual Effects



NEW Precision Series wall panels create dramatic shadow lines

Precision Series wall panels provide design flexibility with easy, cost-effective, horizontal or vertical installation. The original Precision Series HWP profile features a 7/8" depth, while the Precision Series Highline profiles are 1-3/8" deep to add visual intensity to a building's exterior. Panels are now available in 8 rib patterns and 33 ENERGY STAR® colors.



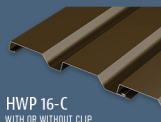
HWP 12-B
WITH OR WITHOUT CLIP



HWP 12-S
WITH OR WITHOUT CLIP



HWP 16-B
WITH OR WITHOUT CLIP



HWP 16-C
WITH OR WITHOUT CLIP



HWPC
BERKSHIRE BLUE - ENERGY STAR

PAC-CLAD.COM
MD: 1 800 344 1400
GA: 1 800 272 4482

IL: 1 800 PAC CLAD
TX: 1 800 441 8661
MN: 1 877 571 20

[PACGREENINFO.COM](#)
YOUR GREEN METAL RESOURCE



Hot Tip of the Month

Masonry Dimensioning (Part 1)

By: Scott Conwell, CSI, CDT, FAIA, LEED AP, International Masonry Institute

Use modular dimensioning when establishing wall heights, lengths, sizes and locations of openings; specify units by actual size, not nominal size.

Modular dimensioning in masonry is something many of us learned in architecture school, yet I often review drawings that show items like window sill elevations and opening sizes that do not fall on the brick module, and therefore would require costly field cutting of masonry units. As a general rule, when using modular brick (which is nominally 4-in. thick x 2¼ in. high x 8-in. long, and actually 3 5/8 in. thick x 2¼ in. high x 7 5/8 in. long), horizontal dimensions like wall lengths and opening widths should be a multiple of the 4-in. module in order to economically limit the masonry to only full and half units. Vertical dimensions like sill elevations and opening heights should be a multiple of the 8-in. module, since three bricks high with their corresponding bed joints course out to 8 inches.

As an example of horizontal dimensioning with modular brick, a 20'-0" nominal dimension for wall length works well, whereas a 19'-10" or 20'-2" dimension would involve field-cutting of units at each course, or alternatively a drastic variation from the 3/8" wide mortar joint specified. As an example of vertical dimensioning with modular brick, a 10'-0" high wall would work well, but a 9'-8" or 10'-4" high wall would split the required 8-in. module, resulting in cut units or unacceptable wide or narrow mortar joints.

Article continued on the next page...



COMMERCIAL
SOLUTIONS

WOOD • FIBERGLASS
ALUMINUM • VINYL

LEARN MORE

Contact your local team:

Chris Carpenter, CSI, CCPR | Architectural Representative
ccarpenter@pella.com | 630-257-1465 | PellaEFCOSolutions.com

© 2016 Pella Corporation

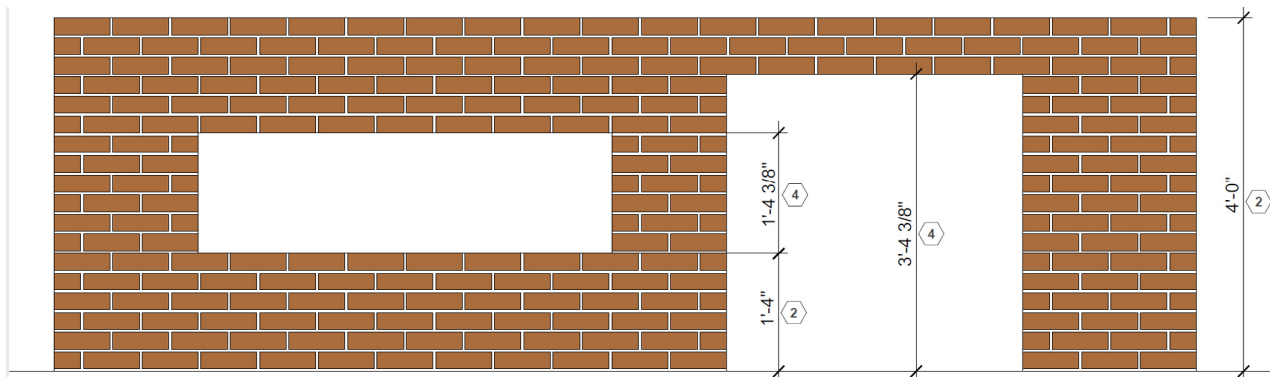
Hot Tip of the Month

Masonry Dimensioning (Part 1) (Cont.)

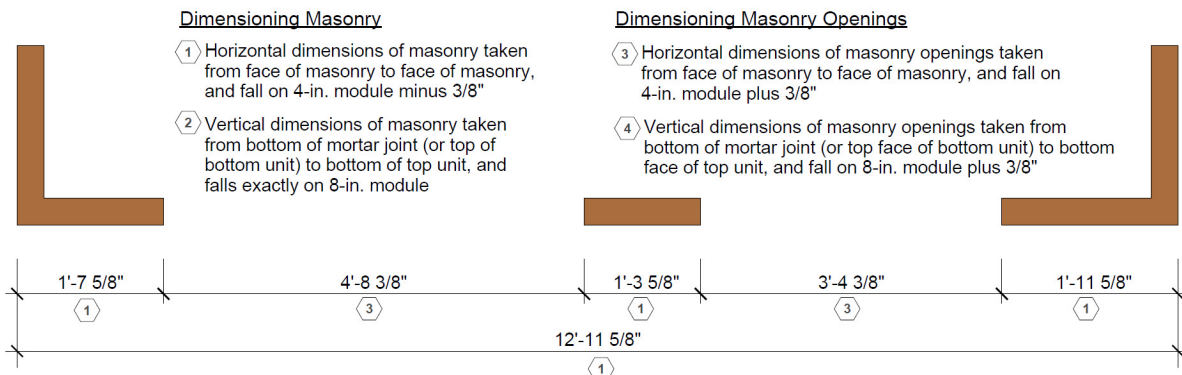
To fully understand how the wall lays out, architects should use actual dimensions rather than nominal dimensions on the architectural drawings. When figuring for horizontal masonry dimensions including wall lengths, lengths of masonry between openings, or horizontal distance between vertical expansion joints, use the 4" modular rule and subtract 3/8" from the total to arrive at the desired horizontal dimension, which will account for one less mortar joint than unit. For example, the width of a brick pier between window openings should be 1'-11 5/8", not 2'-0".

Masonry openings should always be dimensioned from face-of-masonry to face-of-masonry. Therefore, when figuring for widths of masonry of openings, use the 4" module plus 3/8", since there would be one more mortar joint than the number of masonry units in the span of the opening. For example, a window opening might be 3'-4 3/8" wide. The same is true when figuring for heights of openings. Because dimensions are taken from the top of the bottom unit (or the bottom of the adjacent mortar joint, in the case of a door) to the bottom of the top unit, there will be one additional mortar joint than the number of units, and dimensions will come out something like 7'-4 3/8" high. When dimensioning vertical sections of masonry, or masonry heights, there will be an equal number of mortar joints and masonry units, therefore the dimensions should come out evenly to the 4-in. module, for example a wall that is exactly 12'-0" high.

It's easy to be misled by the simplicity of the masonry module and to incorporate nominal rather than actual dimensions on the architectural drawings. At the construction document phase, however, the drawings and/or BIM model should be graphically accurate regardless of scale, showing actual unit sizes and mortar joint widths and incorporating actual, not nominal dimensions.



Vertical dimensioning of modular brick masonry.



Horizontal dimensioning of modular brick masonry.

[Sign up to share your hot tip of the month >>>](#)

Sponsorship and Marketing Sponsorship Opportunities through April 2017

We have many sponsorship and marketing opportunities throughout the year. These opportunities are a great way to increase your company's presence in the Chicago market while showing your support in the Chicago chapter. Sponsorships include tabletops, Young Professional events, social and special events. We have a sponsorship to fit every budget! To start planning or reserve your spot now, we encourage you to reach out to discuss the availabilities and costs of these opportunities.

Mondays, Jan. 9-March 20, 2017: CDT Exam Study Class

- Time and Location: 5:30pm at Norcon, Inc. 661 W Ohio St, Chicago, IL
- Cost \$150 per class
- One sponsor per class, 10 sponsor spots available, you can sponsor more than one class.
- Speaking opportunity at your sponsored class, recognition with company logo and link to website on CDT section of our website and in monthly newsletter and e-mail blasts, one month business card advertisement in our monthly member newsletter

Tuesday, March 28, 2017: Tabletop at Chapter Program

- East Bank Club, Chicago, 5-8pm
- Cost: \$125 member/\$175 nonmember + per person event fee for nonmembers
- Tabletop during social time, speaking opportunity to introduce yourself and company during chapter announcements and sponsorship of raffle prize (prize included in tabletop cost)

Thursday, April 6, 2017: Event Sponsor for Young Professional Event

- Location: Jaks Tap, Chicago, 6-9 pm
- Cost: \$150 Includes complimentary attendance to the event
- 2 minutes of speaking at the beginning of event and display of business cards and a piece of product literature
- Company recognition with logo at event and logo with link in May Change Order newsletter
- Logo with link on this event flyer - *sign up as a sponsor early to take full advantage of this benefit!*

To reserve your spot or for more details contact:

Beth Winkler at 773-466-4147 or csichicagochapter@gmail.com

For a full list of sponsorship opportunities throughout the year: [Sponsorship and Marketing Opportunities >>](#)

Did you know CSI Chicago offers
postings in our newsletters?

**Job postings, event announcements,
and advertisements**

More details and pricing at:

<http://chicago.csinet.org/sponsorship>

Become a Chapter Partner

Help the Chicago Chapter! Become a Partner and Promote Your Company to Influential CSI Professionals. To support the Chicago chapter and continue the high level of programming and education, consider becoming a platinum, silver or gold partner. Increase your visibility among not only high-level CSI members, but the extended 2,000 design & construction professionals who have elected to receive our communications and view the website.



Thank you to all the Partners who support the chapter every month! [View current partners >>](#)

For more information and rates on partnerships and other advertising and sponsorship opportunities, contact the chapter at:

Phone: 773-466-4147

E-mail: csichicagochapter@gmail.com

Details and rates: [CSI Chicago Partnership, Sponsorship and Advertising >>>](#)

Marketing Your Events, Job Openings, and Products

In addition to event sponsorships and partnerships, the Chicago chapter has opportunity for you to spread the word on your company and its activities. We can help you promote your events, job opportunities, and new products through our member only newsletter and our subscribers e-mail newsletter. We also have yearly advertisements in our member newsletter so you can connect with our members consistently every month.

We are always happy to work with you on the details of your advertising. For more information and rates on these opportunities, contact the chapter at:

Phone: 773-466-4147

E-mail: csichicagochapter@gmail.com

Details and rates: [CSI Chicago Marketing and Advertising >>>](#)

"Capitol Capital Ideas" The 2017 CSI North Central Region Conference

May 4-6, 2017, Madison Wisconsin

The conference will be held at the newly renovated Park Hotel on the Capitol Square, facing the Wisconsin State Capitol Building. The Capitol Square is centrally located on the isthmus between Lake Mendota and Lake Monona, and is home to the famous Madison Farmer's Market.

The location on the square has easy access to museums, shops, bars, restaurants, and the lakes. We will be just a few blocks away from the Frank Lloyd Wright designed Monona Terrace Convention Center, and the State Street pedestrian mall which runs from the Capitol Square to the University of Wisconsin campus. For the more adventurous there is easy access to the 12 mile Lake Monona bike path loop.

Use the following links to learn more about this event:

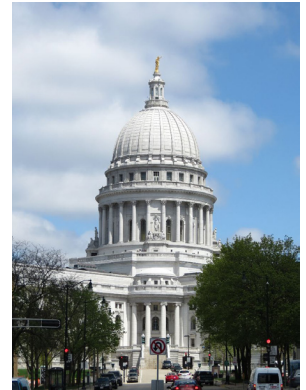
[NCR Flyer](#)

[Preliminary Conference Schedule](#)

[Sponsorship Information](#)

Potential Sponsors: Download, fill in and return this form [sponsorship form](#)

[Hotel Information:](#) Includes room rates, contact information and block name



The Construction Specifier Magazine

The Construction Specifier is the official magazine of CSI. Click the photo to the right to read current industry articles and the latest issue.



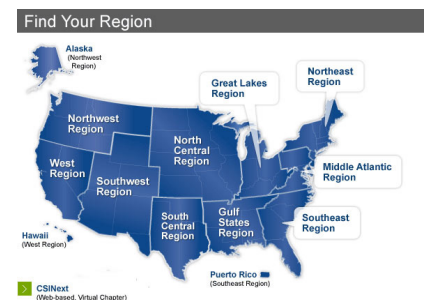
North Central Region Newsletter

Find out what is happening throughout the region by reading the [NCR monthly newsletter](#).



Locate a Chapter or Region

Click on the map to be taken to the chapter locator webpage.



Industry Events

Masonry Monday: Thermal Performance of Concrete Masonry Systems

Monday, February 6, 2017, 12-1pm

2140 W. Corporate Dr., Addison, IL

Presented by Steve Hunt, Northfield Block.

This program is registered with AIA for 1.0 Learning Unit. There is no charge to attend, but general admission seating (West Classroom) is limited.

To register for this program, visit: <https://goo.gl/gltEfY>.

For additional information contact IMI at (630) 396-3144 or tindelli@imiweb.org.



"IMI in the City"

Held once a quarter from noon until 1:00 pm on the following days in Chicago:

Date	Topic
Tuesday February 7	Energy Efficiency of Masonry Information/Registration for Feb. 7 >>>
Friday May 5	"BIM-M" - BIM for Masonry
Tuesday September 12	Structural Masonry for Non-Engineers
Tuesday November 7	Case studies of Masonry Restoration Projects

Lunches are provided. Seats are limited to 60 people. Most courses will carry an AIA HSW credit. Please e-mail tindelli@imiweb.org with questions.

Contractor College Webinars with IMI

We have a series of upcoming 2-hour long Contractor College webinars intended for BAC-signatory contractors and BAC members. In many cases, the content is also suitable for design professionals.

2/16/17 – Masonry Restoration

3/16/17 – Tips to Optimize Structural Masonry

For information and to register for these webinars, [click here](#).

DCEO ILLINOIS ENERGY NOW - ILLINOIS ENERGY CODE TRAINING

FREE CEU's provided by Illinois Office of Energy & Recycling for the Illinois construction industry to improve compliance with the 2015 IECC and ASHRAE 90.1-2013.

Six different events held at various locations and dates throughout Illinois:

1. Join us for a 2015 IECC Code Update and receive a copy of the 2015 IECC (FREE!) - Full Day Event
2. Come join us for a Quick Breakfast or Lunch Update! and receive Illinois' full-color guide 'Success with IECC for Builders & Trades' (FREE) - Half day event
3. Residential HVAC Load Calculations - All day event
4. Developing & Reviewing Performance-Based Submittals for Code Compliance - Half day event
5. Game On! Commercial Energy Modeling for Code Compliance - All day event, Chicago Loop Location on March 2 and May 4.
6. Trust But Verify: Understanding Energy Modeling Submissions- Half day event , Chicago Loop Location on April 5 and May 24.

[View all event listings for details and registration>>](#)

Section continued on the next page...

Industry Events (cont.)

HOCKEY GAME!! AND BREAST CANCER FUNDRAISER, WITH CSI INDY

Saturday March 18, 2017

Come join us as the Indianapolis Chapter of CSI root on the Mighty Indy Fuel as they take on the Evil Kalamazoo Wings for "Pink in the Rink" night against Breast Cancer. Wear your pink! A portion of the total proceeds go directly to Susan G. Komen Central Indiana to fund breast cancer research and breast health services to women in our community. Special events for our group throughout the game!

6:45 PM Suggested Arrival - SEAT SECTIONS 207/208 (EASY ACCESS TO BAR)

7:35 PM Drop the puck! Game Begins!

Indiana Fairgrounds Colosseum, 1202 East 38th Street

Cost: \$24 per person by end of business day March 3, 2017

[Register Online Now >>>](#)

PRODUCTS FOR CONCRETE RESTORATION

WALL PROTECTIVE AND DECORATIVE COATINGS

ADMIXTURES FOR CONCRETE

PRODUCTS FOR STRUCTURAL STRENGTHENING

PRODUCTS FOR LARGE PROJECTS, DAMS, CANALS AND VIADUCTS

PRODUCTS FOR TILE AND STONE

PRODUCTS FOR ROAD MAINTENANCE

PRODUCTS FOR SPORTS FACILITIES

PRODUCTS FOR CEMENTITIOUS AND RESIN FLOORING

PRODUCTS FOR UNDERGROUND CONSTRUCTION

ELASTIC SEALANTS AND ADHESIVES


PRODUCTS FOR SYNTHETIC TURF

PRODUCTS FOR RESILIENT AND CARPET FLOORING

PRODUCTS FOR ACOUSTIC INSULATION

PRODUCTS FOR BELOW-GRADE WATERPROOFING


PRODUCTS FOR WOOD FLOORING

THE WORLD OF  MAPEI

TOTAL ARCHITECTURAL SOLUTIONS

As the leading global manufacturer of mortars, grouts and adhesives, MAPEI also offers the full spectrum of chemical products for construction projects – everything from dams, bridges and tunnels to malls, hospitals and condominium towers. We partner with the architectural community by providing a single source for system specifications, technical expertise/consultation and practical online architectural tools.

www.mapei.us/architects
Illustrations by Carlo Stanga

 **MAPEI**
ADHESIVES • SEALANTS • CHEMICAL PRODUCTS FOR BUILDING

North Central US Specifications Manager

We are seeking the talent and energies of a proven professional who will represent the ROCKWOOL® Values of Honesty, Responsibility, Efficiency, Passion and Entrepreneurship by joining our Sales Team as a Specifications Manager based out of North Central US.



Reporting to the NA Specifications Manager you will maintain and expand Roxul's function as a major supplier of insulation to the Building Envelope, Interior Building Component, and Industrial segments in the geography and to promote Roxul products in line with the Specification/Commercial budget and strategy. You will also develop specifications for Roxul products with leading architects and consultants in the assigned geography, making sales presentations to architectural firms.

- Minimum 5 Years' experience in specification sales of industrial/commercial products in the building material industry.
- Marketing/technical education (Architectural/Civil Engineering)
- Good negotiating/sales skills.
- Experience speaking to large groups educated on the subject
- Travel overnight up to 40% of the time.

Read more about this position and others at [Roxul Career Opportunities >>>](#)

Leadership Directory

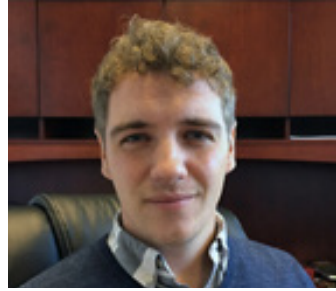
Officers and Directors July 2016 - June 2017



President
[Jeremy Olsen](#)
CSI, CCS, CCCA, AIA, LEED AP



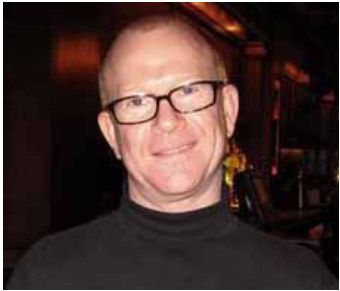
President-elect
[Melissa Gibson](#)
CSI, CCCA, LEED AP



Vice President 2018
[Peter Grotenhuis](#)
CSI, CDT



Vice President 2017
[Scott Conwell](#)
CSI, CDT, FAIA



Secretary 2017
[Stuart Berger](#)
CSI, CCS, AIA



Treasurer 2017
[Deborah Burkhart](#)
CSI, CCS, AIA, LEED AP



Membership Officer 2017
[Chris Walsh](#)
CSI, CDT, LEED GA



Director 2017
[Tim Blatner](#)
CSI, LEED AP



Director 2017
[Kira Rogatnik](#)
CSI, CDT



Director 2017
[Drew Clausen](#)
CSI



Director 2018
[Andrea Baird](#)
CSI, CCCA, AIA, P.E., LEED AP



Director 2018
[Chris Carpenter](#)
CSI, CCPR



Director 2018
[Robert Moretti](#)
MBA, CSI, CDT



Past President 2017
[Elias Saltz](#)
CSI, CCS, LEED AP



N. Central Region Director
[Matthew Nordloh](#)
CSI, CCPR, LEED GA



Executive Director
[Beth Winkler](#)

Board meetings are typically held 1 hour prior to chapter meetings and open to all members to attend. If you would like to attend, send RSVP to csichicagochapter@gmail.com

Leadership Directory Committee Members

Awards - Chapter	Chair	Jeremy T. Olsen, CSI, CCS, CCCA, AIA, LEED AP	Jeremy@daylightstudioarch.com
Awards - Institute	Chair	Elias Saltz, CSI, CCS, LEED AP	Elias@ArchiTechspec.com
Awards - Regional	Chair	Melissa Gibson, CSI, CCCA, LEED AP	mgibson@epsteinglobal.com
By-Laws	Chair	Randall A. Chapple, CSI, CCS, AIA, SE	rchapple@gpchicago.com
Certification	Co-Chair	Dan Smith, CSI, CCPR, LEED AP	Dan.R.Smith@saint-gobain.com
Certification	Co-Chair	Larry Nordin, CSI, CCS, AIA	larry.nordin@scb.com
Certification	Committee	Colin O'Donoghue, AIA, LEED AP BD+C	od.colin@gmail.com
Communications	Chair	Stuart Berger, CSI, CCS, AIA	studiob57@comcast.net
Communications	Newsletter Editor	Beth Winkler	csichicagochapter@gmail.com
Communications	News. Committee	Elias Saltz, CSI, CCS, LEED AP	Elias@ArchiTechspec.com
Communications	Website Editor	Beth Winkler	csichicagochapter@gmail.com
Communications	ECommunications	Randall A. Chapple, CSI, CCS, AIA	rchapple@gpchicago.com
Communications	Graphics	Peter W. Grotenhuis, CSI, CDT	peter@sjmallein.com
Communications	Committee	OPEN	
Continuing Education	Coordinator	Joseph A. Stypka, FCSI, CCS, FAIA	jstypka@jahn-us.com
Continuing Education	Committee	Scott Conwell, CSI, CDT, FAIA, LEED AP	sconwell@imiweb.org
Contractor Engagement	Chair	Heather Rice, CSI	hrice@Hpsubfloors.com
Contractor Engagement	Committee	Patrick J. Duffy, Jr., CSI	pduffy@abuildingproducts.com
Contractor Engagement	Committee	Scott Conwell, CSI, CDT, FAIA	sconwell@imiweb.org
Contractor Engagement	Committee	Jennifer R Friedland CSI, CDT, LEED GA	Jennifer.R.Friedland@saint-gobain.com
CSI2eye	Co-Chair	Kurt Moehlmann, CSI, CDT	rpikurt@aol.com
CSI2eye	Co-Chair	Kira Rogatnik, CSI, CDT	krogatnik@metlspan.com
CSI2eye	Committee	Alan Itzkowitz, AIA, FCSI, CCS, CCCA, NCARB, LEED AP	alan.itzkowitz@gmail.com
Finance Committee	Chair	Deborah Burkhart, CSI, CCS, AIA, LEED AP	dabdab@bus.illinois.edu
Finance Committee	Committee	Stuart Berger, CSI, CCS, AIA	studiob57@comcast.net
Historian	Chair	W. Dean Walker, CSI, CCS, AIA	deanspecs@gmail.com
Historian	Committee	Elias Saltz, CSI, CCS, LEED AP	Elias@ArchiTechspec.com
Membership	Chair	Chris Walsh, CSI, CDT, LEED GA	cwalsh@inprocorp.com
Membership	Committee	Randall A. Chapple, CSI, CCS, AIA, SE	rchapple@gpchicago.com
Membership	Committee	David O'Bryan Jr., CSI, CDT	dobryan@rustoleum.com
Membership	Committee	Missy Ruminski, CSI-EP, Affiliate AIA Chicago	Missy@tuschalleng.com
Membership	Committee	Robert Moretti, MBA, CSI, CDT	rmoretti@tremcoinc.com
Nominating	Chair	Melissa Gibson, CSI, CCCA, LEED AP	mgibson@epsteinglobal.com
Nominating	Committee	Elias Saltz, CSI, CCS, LEED AP	Elias@ArchiTechspec.com
Nominating	Committee	Jeremy T. Olsen, CSI, CCS, CCCA, AIA, LEED AP	Jeremy@daylightstudioarch.com
Nominating	Committee	Kurt Moehlmann, CSI, CDT	rpikurt@aol.com
Partners & Sponsorship	Chair	Drew Clausen, CSI	drew.clausen@owenscorning.com
Partners & Sponsorship	Committee	Scott Conwell, CSI, CDT, FAIA	sconwell@imiweb.org
Partners & Sponsorship	Committee	Peter W. Grotenhuis, CSI, CDT	peter@sjmallein.com
Programs	Chair	Timothy Blatner, CSI, LEED AP	tblatner@fitzgeraldassociates.net
Programs	Committee	William Cohen, CSI	bcohen@epicmetals.com
Programs	Committee	Robert Moretti, MBA, CSI, CDT	rmoretti@tremcoinc.com

Committee members continued on the next page...

Leadership Directory Committee Members (cont.)

Programs	Committee	Andrea Baird, CSI, CCCA, AIA, P.E., LEED AP	albaird@rrj.com
Roundtable - Industry	Chair	Scott Conwell, CSI, CDT, FAIA	sconwell@imiweb.org
Roundtable - Industry	Committee	Matthew Nordloh, CSI, CCPR	mattn@integratingproducts.com
Roundtable - Industry	Committee	Robert Moretti, CSI, CDT	rmoretti@tremcoinc.com
Roundtable - Industry	Committee	Chris Carpenter, CSI, CCPR	ccarpenter@pella.com
Roundtable - Meet the Rep	Chair	John Birazzi, CSI, CDT	jbirazzi@kleinandhoffman.com
Roundtable - Meet the Rep	Committee	Pat Ruban, CSI	patruban10@yahoo.com
Roundtable - Meet the Rep	Committee	Kurt Moehlmann, CSI, CDT	rpikurt@aol.com
Roundtable - Specifier	Chair	Melissa Marie Gibson, CSI, CCCA, AIA, LEED AP	mgibson@epsteinglobal.com
Roundtable - Specifier	Committee	James Cross, CSI, CCS, AIA	j.cross@studiogc.com
Roundtable - Specifier	Committee	Randall A. Chapple, CSI, CCS, AIA	rchapple@gpchicago.com
Roundtable - Specifier	Committee	Larry Nordin, CSI, CCS, AIA	larry.nordin@scb.com
Roundtable - Summer Series	Chair	Jeremy T. Olsen, CSI, CCS, CCCA, AIA, LEED AP	Jeremy@daylightstudioarch.com
Roundtable - Technical	Chair	Elias Saltz, CSI, CCS, LEED AP	Elias@ArchiTechspec.com
Roundtable - Technical	Committee	Jeremy T. Olsen, CSI, CCS, CCCA, AIA, LEED AP	Jeremy@daylightstudioarch.com
Roundtable - Technical	Committee	Elaine Fitzgerald, CSI, CCS	elainefitzgerald@comcast.net
Roundtable - Technical	Committee	Andrea Baird, CSI, CCCA, AIA, P.E., LEED AP	albaird@rrj.com
Roundtable - Technical	Committee	Robert Moretti, CSI, CDT	rmoretti@tremcoinc.com
Social	Chair	Kristin Henriksen, CSI, CDT	k_henriksen14@yahoo.com
Social	Committee	Kira Rogatnik, CSI, CDT	krogatnik@metlspan.com
Social	Committee	Taylor Neill, CSI	taylorneill@marvin.com
Social - Young Professionals	Committee	Rebecca Greenberg, CSI, CDT	rgreenberg@esadesign.com
Social - Young Professionals	Committee	Noi Phonexayphova, CSI, CDT	sphonexayphova@gmail.com
Social - Young Professionals	Committee	Charles Arko, CSI, CDT	charlesarko@hotmail.com
Social Media	Chair	Holly Hirsch, CSI	Holly.Hirsch@boral.com
Social Media	Committee	Thad Goodman, CSI, CDT	thadg@nationalgypsum.com
Social Media	Committee	Wesley Sherrer, CSI	wesley.sherrer@momentive.com
Social Media	Committee	OPEN	
Student Outreach	Chair	Peter W. Grotenhuis, CSI, CDT	peter@sjmallein.com
Student Outreach	Committee	Scott Conwell, CSI, CDT, FAIA	sconwell@imiweb.org
Student Outreach	Committee	Jeremy T. Olsen, CSI, CCS, CCCA, AIA, LEED AP	Jeremy@daylightstudioarch.com
Technical	Chair	Randall A. Chapple, CSI, CCS, AIA	rchapple@gpchicago.com



Time To Get #CSIcertified

By: Eric D. Lussier, Precision Athletic Surfaces, President of CSI VT

Whether an emerging professional, new to your company or new to your position, personal advancement through a professional certification is a tremendous asset in more ways than one.

In the construction industry, the certifications through the Construction Specifications Institute (CSI) carry weight with many of the major players of a project – the owner, the architect, the general contractor, product representative or construction manager.

CSI's Construction Documents Technologist (CDT) program is the prerequisite to CSI's advanced Certifications: Certified Construction Contract Administrator (CCCA); Certified Construction Specifier (CCS) and Certified Construction Product Representative (CCPR).

Whether you are new to the construction industry or a 50 year veteran, the CDT program can and will help you with an overall building project. If you find yourself lost in a 1500 page, 32 division project manual, the CDT can help you understand where to find what you are looking for and just how that project unfolds from conception to delivery.

I can tell you first hand how much attaining the CDT has assisted me in my job. Before I started attending my CDT study group many years back, [Read Mr. Lussier's full article on Let's Fix Construction>>>](#)

Building envelope - or building enclosure?

By: Sheldon Wolfe, RA, FCSI, CCS, CCCA, CSC

In October, I published "Tegularity," a discussion of the proper term for acoustic ceiling panels. (The title came from the name for a specific type of panel edge.) Shortly thereafter, in December 2016, I received a question from Anthony Capkun, editor for Electrical Business Magazine and former editor for the Construction Specifier. He asked, "What is the correct term these days: a) Building Envelope or b) Building Enclosure?"

I responded that I had always used building envelope, and that that is the term I hear most often. But, having learned a long time ago that always hearing a term used in a particular manner does not mean that that is the correct term, I decided to investigate further.

One of the first places I go for this type of question.... [Read Mr. Wolfe's full article on Specific Thoughts>>>](#)

Now I Sit Me Down

By: Ed Buch, CSI, CCS, AIA, LEED AP

Michael Thonet is the inventor of the steam bending process first used on his famous bentwood Viennese cafe chair. His name is pronounced "Tawn-net" according to Witold Rybczynski in his new book, Now I Sit Me Down, From Klismos to Plastic Chair: A Natural History. This is just one tiny piece of the fascinating history of seating presented by architect and writer Rybczynski as he takes us from three legged stools of ancient Egypt, to Chippendale, Charles & Ray Eames, Hans Wegner, the Aeron chair, the Barcolounger and finally the ubiquitous, inexpensive injection molded plastic patio chairs sold at stores like Walmart. In both high-design and nodedesign chairs Rybczynski recounts the influence of new materials on their design, what makes a chair comfortable or not, and provides insight to the chairs designed by famous architects.

Rybczynski starts his story... [Read Mr. Buch's full article on CSI Santa Clara Valley Chapter>>>](#)

The Closeout

BIM Integration in a New Laboratory Building

Submitted by: Scott Conwell, CSI, CDT, FAIA, LEED AP International Masonry Institute

A major healthcare institution in the Chicago area (project name is withheld) recently constructed a large laboratory on their suburban hospital campus. The 45,000 s.f. basement of this facility was divided into many small rooms and spaces constructed entirely of 17'-6" high masonry partitions, corridor walls, and shaft walls, all of which were grouted and reinforced vertically and horizontally.

The laboratory function of the building necessitated extensive and well-coordinated mechanical, electrical, plumbing, and fire protection systems, all running within and through the reinforced masonry walls. The masonry was built to accommodate over 1,500 penetrations, pipe sleeves, and embedded vertical systems per the BIM model, and required tight communication and coordination between the masonry and related trades in the construction of these complex masonry walls.

The general contractor, Power Construction, made the early decision to sequence the installation of the MEP piping and ductwork within and through the masonry walls simultaneous to the masonry construction, rationalizing that the thousands of pipes and ducts at various elevations would present an unnecessary obstacle to the masons if they were installed prior to the masonry. This unconventional work method called for a comprehensive and accurate BIM model to facilitate construction.



As the concrete masonry was constructed, the bricklayers installed 468 sleeves for HVAC, 69 sleeves for electrical, 159 sleeves for mechanical pipe, 257 sleeves for fire protection, 231 sleeves for plumbing, 343 sleeves for water, and 10 sleeves for miscellaneous, resulting in a total of 1,537 sleeves in the masonry walls.

For the duration of the basement construction, the bricklayers were arguably the most critical trade on the project, dictating the schedules of the MEP trades. According to Pete Sindic, project manager of Richards & Weyer Masonry, "There was a high level of cooperation and teamwork between the bricklayers and the other trades throughout the project." Chris Coyne, Superintendent with Power Construction, said, "This was one of the more intense masonry projects I've worked on with the prefab in the masonry walls coupled with all the overhead sleeves and the amount of reinforcing. It required a high degree of organization by the masonry contractor."

This laboratory is a good example of project-wide reliance on the masons, a dependency that will become prevalent as more projects are delivered using BIM. With the advent of the BIM for Masonry (BIM-M) initiative (www.bimformasonry.org), an industry-wide task force comprising architects, engineers, contractors, masonry suppliers, labor unions, and academia to promote and develop tools that will facilitate the use of BIM-M, this author predicts that future projects will see an even greater integration of BIM-M as a design and construction tool, realizing further economies in designing and building with masonry.



A bricklayer installs mechanical duct sleeves at precise locations per the BIM model as he construction the masonry.

Photo Credit: International Masonry Institute

[Sign up to showcase your project in *The Closeout* >>>](#)