

CHANGE ORDER

CONSTRUCTION SPECIFICATIONS INSTITUTE CHICAGO CHAPTER



Chapter Meeting The 78: Chicago's Next Great Neighborhood

Tuesday, September 24
5:00-8:00pm

Maggiano's Little Italy
Chicago, IL

See page 5 to learn more.

2019
September



Fall Social Event: Trivia Night
Tuesday, September 10, 6:00pm
See page 6 for details.



FROM THE PRESIDENT	2
MEMBER CONNECTION	3-4
CHAPTER EVENTS	5-6
CHAPTER QUICK READS	7
CHAPTER ARTICLE	8
CSI BEYOND THE CHAPTER	9
INDUSTRY EVENTS	10

Upcoming Chapter Events

- 9/05** **Specifier Roundtable:** *A Sticky Subject - Adhesion of Air and Water Resistive Barrier Materials*
- 9/10** **Social Event:** Trivia Night
- 9/18** **Technical Roundtable:** *Corporate Mindfulness*
- 9/24** **Chapter Meeting:** *The 78: Chicago's Next Great Neighborhood*

Included Articles

- 8** *Magical Thinking in Specifications – Part 2*



LEADERSHIP TEAM 2019-20

PRESIDENT

Andrea Baird
CSI, CCCA, CDT

PRESIDENT-ELECT

Brad Schwab
CSI, CDT

VICE PRESIDENT

Jennifer Friedland
CSI, CDT, LEED GA

VICE PRESIDENT

Scott Conwell
FCSI, CDT

SECRETARY

Chris Carpenter
CSI, CCPR, CDT

TREASURER

Elias Saltz
CSI, CCS, CDT

MEMBERSHIP OFFICER

Robert Moretti
CSI, CDT

DIRECTORS

Guadalupe Casimiro
CSI, CDT

Randall Chapple
CSI, CSS, CDT

Paul Fogarty
CSI, CDT

Rachel Nava
CSI, CDT

Jeremy Olsen
CSI, CCS, CCCA, CDT

Heather Rice
CSI, CDT

IMMEDIATE PAST PRESIDENT

Peter Grotenhuis
CSI, CDT

DIRECTOR - NCR

Drew Clausen
CSI

EXECUTIVE DIRECTOR

Beth Winkler



September Kicks Off Educational & Networking Opportunities

Andrea Baird

NCARB, P.E., BECxP, CxA+BE, CCCA, LEED AP BD+C

As the days get shorter and nights get cooler, it's hard to believe that summer is over already. Soon we will need to discuss cold-weather provisions for current construction projects. The change of season also marks the start of educational and networking opportunities in our chapter.

Our committees have been working hard this summer to bring you quality events. The first Specifier Roundtable will cover adhesion of air and water barriers, presented by the executive director of Air Barrier Association of America. The first Industry Roundtable will be on corporate mindfulness. For those who have not had a chance to attend, roundtables are opportunities to earn continuing education credits delivered in a relaxed and collaborative format. They are also free of charge. Roundtables fill up fast, early registration is recommended.

Our first social event is September 10th. We will have a fun night of trivia with questions written by our very own Jeremy Olsen. Come reconnect with existing members and meet new ones over a beverage. We are kicking off our Chapter Programs with an overview of the masterplan for The 78 neighborhood project on September 24th.

I encourage you to make the most of your membership by attending the upcoming events and utilizing our online resources.

M2M_{CONNECTION}

Built By Members For Members



Submit content for the Change Order Newsletter using our M2M Connection Tool Box.

[CLICK TO VIEW OUR LEADERS](#)

www.csichicago.org • info@csichicago.org • 773-466-4147



Member Spotlight

Elaine Fitzgerald, CSI, CCS, CDT

Elaine Fitzgerald studied undergraduate at University of Illinois, then graduated with a Master's in Architecture from UIC. She decided against a career in veterinary medicine in favor of one in Architecture. (For which she says "Thanks Mom!") She remained in Chicago working in architectural firms such as Garofalo Architects Inc and VOA (now Stantec) until taking a pause to raise her family. However, she couldn't stay away from the industry and returned to ArchiTech Consulting as a specifier. Who knew what fun she was missing! Most recently, she became a Senior Project Specifier at BKV Group.

The District 230 high schools project with VOA left a lasting impression on her career. She saw a little bit of every part of the process of creating a building on this project. What an experience gainer!

Elaine appreciates the degree of technical information in relation to building science you can be involved in with CSI Chicago. She values the ability to learn so much and encourages others to never stop learning throughout their career.

We Want To Spotlight You Next!

Please [click here](#) and fill out a Member Spotlight Form to share more about you with your fellow members.

Members On The Move



John N Birazzi, CSI, CDT, AIA, CxA+BE, LEED AP recently joined Antuovich Associates as an Associate Principal and Co-Director of Technical Services at the office.



Paul Fogarty, CSI, CDT of SJ Mallein & Associates was recently promoted to Architectural Building Envelope Specialist, and is now a resource for the local design community for building envelope-related challenges.



Elias Saltz, CSI, CCS, SCIP of Conspectus, Inc. will be presenting [Government vs. Commercial Construction Contracts & Specifications: Cross-Pollinating Best Practices](#) at CONSTRUCT on Oct. 9.

Please [click here](#) and fill out the Members On The Move Form to share your personal or professional news/achievements.

New Chapter Members

Basit Baig, CSI-EP
Alps Builders, Inc

Marcin Ejsmont, CSI
Tremco Commercial Sealants and Waterproofing

Thomas Kane, CSI
Klein and Hoffman

Margo Olson, CSI

John Russo, CSI
FitzGerald

Nathan Ward, CSI-EP, CDT
(2yr CSI Member)

Membership Milestones

30+ Years
Edward Teske, CSI, Member Emeritus (58 yrs)

Janet Piccola, FCSI (34 yrs)
Behr Process Corp

25 Years
SueEllen C Edwards, MBA, MBA, CSI, ALA, MPM

5 Years
Matt Spelde, CSI
Dow Performance Silicones

Thank you to all of our members who are celebrating an anniversary with CSI Chicago this month.
Membership Milestones features members who are celebrating 5 yrs, 10 yrs, 15 yrs, 20 yrs, 25 yrs and 30+ yrs.

Project Showcase by BKV Group

Arkadia West Loop Renovation Chicago, IL

Originally built in 2015 and located in the heart of Greektown, this luxury high rise had great bones, but its interiors were lacking the artistic energy and residential warmth its West Loop residents desired. The interior refresh of Arkadia was achieved by melding spunky colors, playful patterns, and unexpected use of scale.

Playing off of the lobby's dramatic scale, vibrant color and bold graphics are contrasted with warm wood tones to create a sophisticated welcome to the property. Greenery is layered throughout the spaces by way of indoor planters and a moss feature wall that dances its way up the lobby's main staircase. Patterns of varying scale are paired throughout to create quirky and visually stimulating spaces for residents to relax, work, and mingle.

Throughout the fifth-floor amenity spaces, a warm wood-tone floor is contrasted with graphic elements and accents of color. In the party room, a floral rug and rich walnut wood tones are juxtaposed with graphic black and white concrete tiles on both the floor and wall that will endure a beautiful patina over time. This same black and white floor tile is a repeating element in the game room where residents can enjoy a variety of games including billiards, board games, and a giant wall Scrabble game. A colorful, abstract watercolor graphic draws residents to the fireplace lounge and out to the newly outfitted roof deck. Just in time for Chicago's summer of 2019, residents can enjoy lounging poolside, grilling out with friends, or a game of cornhole at this fully remodeled outdoor space.

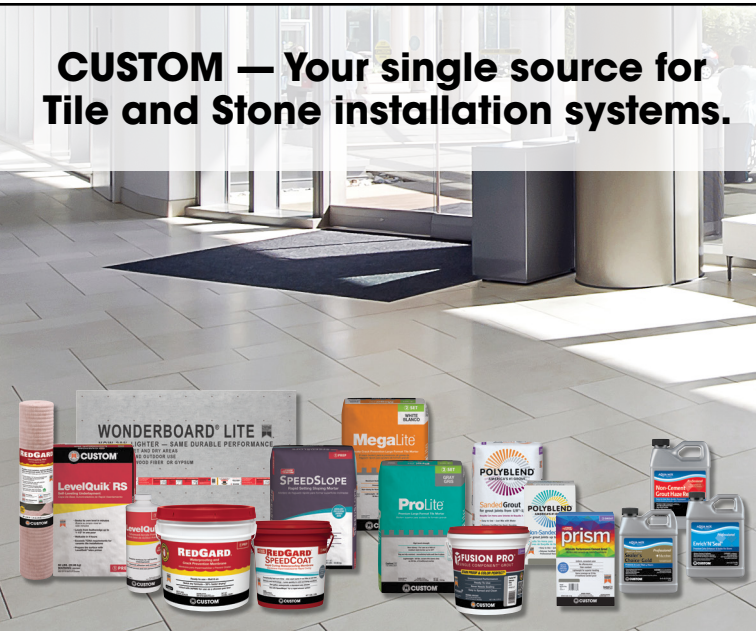


Photos courtesy of BKV Group.

Share Your Firm's Project

If you were on a team that just completed a project, [click here](#) and fill out a form.

CUSTOM — Your single source for Tile and Stone installation systems.



CustomBuildingProducts.com
800-272-8786



Creating Value.

Reducing Risk.

Where Design and
Construction Meet.

CON
SPEC
TUS

A Full Suite of
Industry-Leading
Capabilities:

Systems and Performance
Documentation

Construction Specifications

Risk & Quality Advisory

Conspectus, Inc.
Elias Saltz, CSI, CCS
Chicago, IL
609 628 2390
esaltz@conspectusinc.com
www.conspectusinc.com

The 78: Chicago's Next Great Neighborhood

Chapter Meeting

The 78 is a 62-acre blank canvas in downtown Chicago bordered by Clark Street, Roosevelt Road, 16th Street and the Chicago River. The 78 will set a new standard for mixed-use developments.

This presentation will focus on the plans of the development, the players involved and the challenges faced in a development of this magnitude.

FULL DETAILS & REGISTRATION

EVENT SPONSORSHIP OPPORTUNITIES



Rendering courtesy of Related Midwest.

Date: Tuesday, September 24, 2019, 5:00-8:00 PM

Location: Maggiano's Little Italy - Clark & Grand, Chicago

Cost For Dinner & Program:

CSI Chicago Members are Complimentary

Nonmembers \$60

Registration: Due by Sept. 17



Don Biernacki is the Senior Vice President of Construction at Related Midwest where he oversees the building of the region's most iconic structures and staple communities, redefining and enhancing the landscape of real estate. Along with his team of talented design and construction experts, Biernacki is responsible for all of Related Midwest's ground-up and renovation projects.



Michael Pfeffer, AIA, LEED AP is Vice President of Architecture at Related Midwest where he works directly with architecture and urban planning firms to oversee the design of the company's two largest pipeline projects: The 78, and 400 Lake Shore Drive.

CSI Chicago Platinum Partners

Senergy®

BEHR

BLUE LINE
BUILDING * PRODUCTS

**CON
SPEC
TUS**

CUSTOM
TILE INSTALLATION SYSTEMS

Henry®

MAPEI®

Oldcastle BuildingEnvelope®

**DuPont™
Tyvek®**
distributed by
Parksite

Filla COMMERCIAL

PAC-CLAD
PETERSEN

BUILDING TRUST

Jika®

SMARTci
SMARTER BY DESIGN. PROVEN BY PERFORMANCE.

[Click here](#) to contact a local representative.

Trivia Night

Social Event

Tuesday, Sept. 10, 2019 from 6:00 PM to 9:00 PM
Ballast Point Brewing, Chicago

We are kicking off our programming season with a fun social event to allow members and guests to catch up and have some fun.

Cost: CSI Chicago Members \$25
Nonmembers \$35

[FULL DETAILS & REGISTRATION](#)



[EVENT SPONSORSHIP OPPORTUNITIES](#)



A Sticky Subject - Adhesion of Air and Water Resistive Barrier Materials

Specifier Roundtable

Thursday, Sept. 5, 2019 from 12:00 PM to 1:00 PM
Lamar Johnson Collaborative, Chicago or by webcast

Presented by: Laverne Dalgleish, Executive Director of the Air Barrier Association of America (ABAA)

Review and compare field tests from laboratory testing and learn what one can expect to be base standards for adhesion to provide guidance in specifications or for site observation.

[FULL DETAILS & REGISTRATION](#)

Corporate Mindfulness

Industry Roundtable

Wednesday, Sept. 18, 2019 from 12:00 PM to 1:00 PM
Materials Marketing, Chicago

Presented by: Kimberly Kayler, CPSM, President of Advancing Organizational Excellence

This workshop will help professionals in the design and construction industry be more productive and happier.

[FULL DETAILS & REGISTRATION](#)

Renee Doktorczyk, FAIA, CSI, CCS, SCIP
Renee@ArchiTechSpec.com

ArchiTech
CONSULTING, INC.

800 E. Northwest Hwy, Ste 208
Mount Prospect, IL 60056-3457
Tel: 224.345.3450

Become A Chapter Partner Today

Platinum and Gold partnerships include ad space in this *Change Order* newsletter.

[Click here](#) to view partnership opportunities.



Wall systems from BASF help your project succeed. With energy efficiency, fire performance, and cost benefits far superior to Metal Composite Materials (MCM) - Music City Motor Cars is a proven example. By incorporating BASF Metallic Effects on a BASF Continuously Insulated (CI) wall system, this project complied with building code requirements and provided a look that exceeded the architect's expectations.

Design Flexibility. Code Compliance. Performance. Let BASF help with the building science, so you can focus on designing the building your clients desire.

Contact David Meyers (david.meyers@basf.com, 630-423-1980)

BASF Corporation - Wall Systems | Jacksonville, FL | P: 800.221.9255 | www.senergy.basf.com

Apply Today For A CDT Scholarship

Applications for the 2020 Class Scholarship are due by November 22, 2019. If you are planning or just thinking about earning your CDT in 2020 you should learn more about our CDT Scholarship. Visit the CDT Scholarship webpage for requirements and how to apply today.

CDT CLASS SCHOLARSHIP

2020 CSi2eye Manufacturer Application Period Announced

The CSi2eye committee has announced that they are moving up the manufacturer application period for 2020. The application portal will open on 10/1/19 and close on 11/22/19. Please check out the CSi2eye Web Page for more information.

CSI2EYE 2020 INFO

CSI Chicago Foundation Web Pages Launch

The CSI Chicago Foundation Board continues to work hard to grow the foundation to support the Chicago Construction Industry and Community. Visit the newly launched CSI Chicago Foundation web pages to stay up to date and donate.

CSI CHICAGO FOUNDATION

CSI Chicago Foundation Calls For Volunteers

The CSI Chicago Foundation Board is looking for a few members to volunteer their time to help us further enhance our donation acquisition efforts. If you are a member who is interested in helping the foundation please email Beth Winkler at info@csichicago.org.

CSI Chicago Gold Partners

ArchiTech
CONSULTING, INC.



North American
MgO LLC
MagTech
ULTRA
Magnesium Oxide Board

SCHÖNOX
HPS NORTH AMERICA

[Click here](#) to contact a local representative.

MEET THE NEW
CLASS IN FIBERGLASS.

ENGINEERED PRODUCT
FOR HIGH-RISE BUILDINGS

SUPERIOR PERFORMANCE IN
STRENGTH AND DURABILITY¹

2.4X MORE ENERGY-EFFICIENT THAN
THERMALLY BROKEN ALUMINUM²

WINDOWS • DOORS • STOREFRONTS • WINDOW WALLS

Single-Source Solutions at a Competitive Price. From Pella.

Envisioning a luxury, suburban-meets-urban experience, the development team looked to Pella® Impervia® large combination fiberglass windows. Their exceptional durability meets the rigorous performance requirements of the building while providing views that maximize daylight without compromising energy efficiency.

One Southdale Place • Edina, MN
Architect: BKV Group
General Contractor: Kraus Anderson
Owner: StuartCo



COMMERCIAL

Chris Carpenter, CSI, CCPR
Architectural Representative
630-675-4750
ccarpenter@pella.com

¹ In testing performed in accordance with ASTM testing standards, Pella's Duracast® fiberglass composite has displayed superior performance in strength, ability to withstand extreme heat and cold, and resistance to dents and scratches.

² U-Factor of Duracast frame is 2.4 times greater than that of thermally broken aluminum when compared in thermal testing.
© 2018 Pella Corporation

Magical Thinking in Specifications – Part 2

Reprinted from Conspectus, Inc.



Written by: Elias Saltz, CSI, CCS

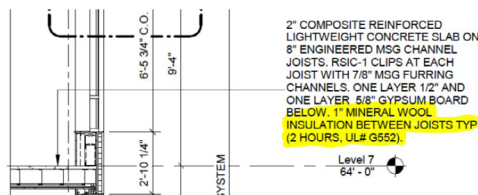
In my recent post, [When Specifiers Engage in Magical Thinking](#), I described what happens when a specifier believes that putting more instructions into a specification will make for a better outcome. Never mind whether or not those instructions were appropriate or even made sense. It turns out that dismantling an abysmally-written specification, while useful and informative (and entertaining), is easy. Too easy, even. Getting inappropriate language removed from specifications is low-hanging fruit because it's right there and we can see it and react to it. We can explain why it's wrong, predict what the results will be, and then see what happens.

Far more difficult, and a more pervasive problem, is identifying what is not stated in the specifications, but should be. Some specifiers believe that whatever they say in a specification will magically make everything come out the way they want, but it's far more common for specifiers to believe that there will always be something somewhere in the specifications will magically cover them for errors in the drawings and omissions in the specs. Maybe they believe that a reference standard includes sufficient information, or that contractors will know the code well enough to keep them out of trouble.

Case Study

When I teach my CSI chapter's CDT class every year, I include an example of a failure from my own history as a specifier, one that serves as a reminder to try to query every paragraph and think about what needs to be added.

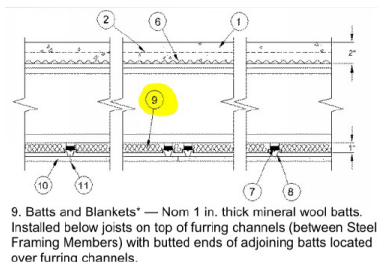
In this example, from an eight-story hotel project, a detail indicates a floor-ceiling fire rating that is ubiquitous throughout the project. The assembly's [UL design](#) number is helpfully called out on the detail:



The UL design refers to a required insulation layer, and labels the layer “batts and blankets.” The drawing says “mineral wool insulation” but not what type.

The specification is mostly mute about what the batts and blankets product is meant to be. The closest thing is a reference to acoustical fire batts in the drywall section, meant for partitions.

The UL design, for its part, shows the insulation like this:



So far, the UL design and the drawing seem in alignment, and the specifications' omission of an actual product appears to be a non-issue. The contractor submitted a mineral wool blanket product for this assembly, Thermafiber SAFB.

During review of the submittal, the project architect double-checked the UL assembly and noticed something. He came to my desk with a question (I was an in-house specifier at the time so impromptu questions were very common). The UL design had named a different product.

9. Batts and Blankets* — Nom 1 in. thick mineral wool batts. Installed below joists on top of furring channels (between Steel Framing Members) with butted ends of adjoining batts located over furring channels.
UNITED STATES MINERAL PRODUCTS CO, DBA ISOLATEK INTERNATIONAL — Type CB.

Isolatek CB is not a “batts and blankets” product. It's a rigid high-density mineral wool board and, as Murphy would have predicted, is more expensive than the submitted product. I don't recall how much more, but given there were tens of thousands of square feet of product, the gap was substantial.

The architect's question: “Is there something in the spec that we can use to compel the contractor to use the correct product without incurring a change order?”

The answer we found after reading the specs, unfortunately, was “sort of, but not really.” The specifications included an instruction that fire rated assemblies be constructed using products required by UL designs. But the repetition of incorrect and vague information from the drawings to the specs (“mineral wool blankets”) gave the contractor information he believed he could rely upon to buy out the project. The architect and owner chose to try to enforce the “fire rated assemblies” provision, which led to a lengthy dispute.

Lessons Learned

Being wrong is a humbling experience. Acknowledging your mistakes is hard, and changing your approach is harder.

Specifications will have omissions. That's inevitable, no matter how diligent a specifier is. Part of the problem is the “text deletion” model of commercial guide specifications: it's far easier to delete something that you see and decide isn't needed, than to add something that's missing. Adding relevant information gleaned from discussions with the design team and spotted on the drawings and extracted from reference standards or UL designs takes practice and experience.

There's an element of magical thinking in not specifying enough – a reliance on the belief that somewhere in that huge stack of paper is a sentence that will help me. The way to avoid this is to just do the work of deeply understanding the project requirements, and including the information necessary to achieve them, end neither less nor more than that.

[Post a comment to this article on the original blog post.](#)

Recommend An Article

If you read or write an interesting article, please share it with us by [clicking here](#) and filling out an Article Recommendation Form.

CONSTRUCT - AEC Education & Expo

Event From CSI Institute

October 9-11, 2019
National Harbor, MD

CONSTRUCT is the premier AEC event where the different disciplines in the industry come together. Join Architects, Designers, Engineers, Specifiers, Project Managers, Contractors, Estimators, Owners, Product Reps and more for collaborative learning.

[LEARN MORE](#)

CSI Master Specifiers Retreat

Event From CSI Institute

January 29-31, 2020
The Langham Huntington Pasadena, Pasadena, CA

Build lasting relationships with knowledgeable product manufacturers and while earning valuable educational credit.

[LEARN MORE](#)

Jeff M. Diqui
Director, Industry Development
and Technical Services

Office: 630-396-7141
Cell: 630-606-8220
jdiqui@imiweb.org
2140 W. Corporate Drive
Addison, IL 60101



North American
MgO
MagTech Ultra™
**TRANSFORMING
THE WAY WE BUILD**
MAKE YOUR WALLS SAFE, GREEN AND HEALTHY WITH ECO-FRIENDLY &
CHLORIDE FREE MAGNESIUM OXIDE CEMENT BOARD
630.518.4766
info@northamericanmgo.com

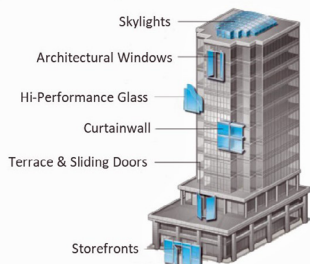


Patrick Duffy, CSI, CCPR
Local Representative

Oldcastle BuildingEnvelope®
283 Inverway
Inverness, IL 60067

Direct Phone (847) 705-9190
Mobile Phone (708) 707-9190
Fax (847) 705-0940

pduffy@abuildingproducts.com
www.obe.com



BLUE LINE BUILDING ★ PRODUCTS

Independent Manufacturers Rep

"The Right Product for the Right Application"

Morin

A Kingspan Group Company

FUNDERMAX

for people
who create



www.Bluelinebp.com

Matt Martino

773.251.0066

mmartino@bluelinebp.com

Take your business to a whole new level.



WE'RE ÖN IT.

Call 855.391.2649 or visit hpsubfloors.com to learn how.



Facades+ Chicago

Thursday, September 27, 2019 from 5:00 PM to 9:00 PM
The Mid America Club in the Aon Building, Chicago, IL

Facades+, the premier conference on high-performing building enclosures, returns to Chicago September 27th at the Mid America Club in the Aon Building. The morning forum features three panels on glass technology, research, and projects using unconventional materials such as kinetic mesh and ETFE. The afternoon offers four technical workshops.

[FULL DETAILS](#)

JBC Masonry Innovation Competition

Submission Deadline: December 15, 2019

\$30,000 in monetary awards in 3 categories:

- Students: Undergraduate or graduate students
- Young Architects/Engineers (under the age of 40)
- A/E Firms, Individual Architects/Engineers, & Cross-Category

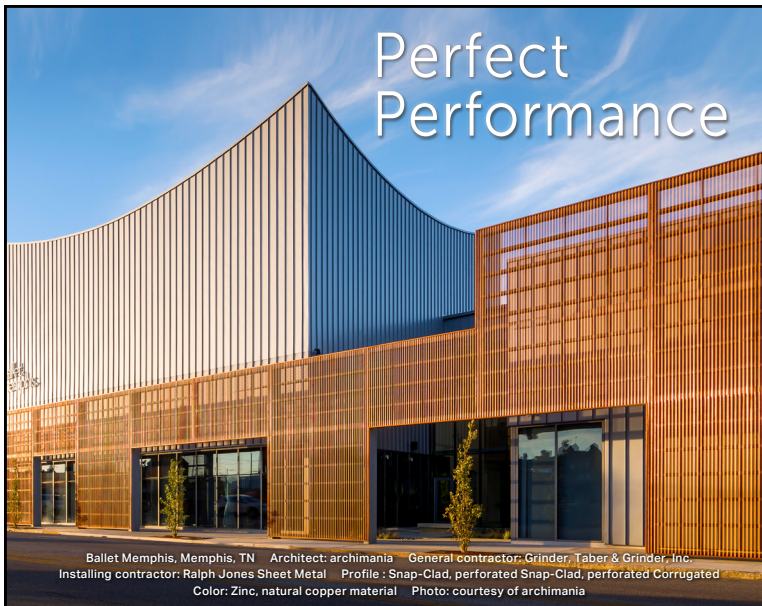
Multidisciplinary teams are encouraged in all categories to help facilitate a well-conceived solution, but individual entries are also permitted. There are no restrictions on team size.

[FULL DETAILS](#)

CSI Chicago Silver Partners



[Click here](#) to contact a local representative.



"We wanted to make the project dynamic and energized. The copper screen looks more solid during the day and perforated at night when lights are on behind it—enhancing the urban experience within the entertainment district."

-Todd Walker, FAIA, Principal, archimania

Case study at PAC-CLAD.COM/BALLETMEMPHIS

PAC-CLAD.COM | INFO@PAC-CLAD.COM

IL: 800 PAC CLAD
AZ: 833 750 1935
GA: 800 272 4482

MD: 800 344 1400
MN: 877 571 2025
TX: 800 441 8661



Sika Corporation, based in Lyndhurst, NJ, is a leading supplier of specialty chemical products and industrial materials serving construction and industrial markets including transportation, marine, and automotive. Its technologies are focused on sealing, bonding, damping, reinforcing and protecting. Sika's product lines include roofing, concrete admixtures, specialty mortars, epoxies, structural strengthening systems, industrial flooring, sealants, adhesives, specialty acoustic and reinforcing materials.

YOUR LOCAL CONTACT:

Lance Krall
Building Envelope Representative
Mobile: 312-415-6717
krall.lance@us.sika.com

BUILDING TRUST

