

# CHANGE ORDER

CONSTRUCTION SPECIFICATIONS INSTITUTE CHICAGO CHAPTER



## PROGRAM SURVEY

VOICE

YOUR

MATTERS



See page 4.

2020  
*June*

FROM THE PRESIDENT 2

MEMBER CONNECTION 3-6

CHAPTER EVENTS 7

CHAPTER ARTICLE 8-9

CSI BEYOND THE CHAPTER 10

### Upcoming Chapter Events

6/16 - Member Happy Hour: Music & Mingling

6/23 - Your Job Search During the Pandemic

See page 7.

### Remote Learning Library

Live online CEU's  
from our members & partners.

See page 6.



### M2M<sub>CONNECTION</sub>

Keeping members connected when we're apart.

See page 5.



### Included Article

Construction Industry Predictions  
For A Post-COVID-19 World

See page 8.



## LEADERSHIP TEAM 2019-20

### PRESIDENT

**Andrea Baird**  
CSI, CCCA, CDT

### PRESIDENT-ELECT

**Brad Schwab**  
CSI, CDT

### VICE PRESIDENT

**Jennifer Friedland**  
CSI, CDT, LEED GA

### VICE PRESIDENT

**Scott Conwell**  
FCSI, CDT

### SECRETARY

**Chris Carpenter**  
CSI, CCPR, CDT

### TREASURER

**Elias Saltz**  
CSI, CCS, CDT

### MEMBERSHIP OFFICER

**Robert Moretti**  
CSI, CDT

### DIRECTORS

**Guadalupe Casimiro**  
CSI, CDT

**Randall Chapple**  
CSI, CSS, CDT

**Paul Fogarty**  
CSI, CDT

**Rachel Nava**  
CSI, CDT

**Jeremy Olsen**  
CSI, CCS, CCCA, CDT

**Heather Rice**  
CSI, CDT

### IMMEDIATE PAST PRESIDENT

**Peter Grotenhuis**  
CSI, CDT

### DIRECTOR - NCR

**Drew Clausen**  
CSI

### EXECUTIVE DIRECTOR

**Beth Winkler**



## Focus On Investing In You

### Andrea Baird

NCARB, P.E., BECxP, CxA+BE, CCCA, LEED AP BD+C

Typically, CSI Chicago is relatively quiet during summer months as we all travel and take vacation. We recognize that this summer will look different for most of us. In an effort to provide relevant and timely programming to our membership, we will be offering more programming this summer. In addition to the [Remote Learning Library](#) providing CEUs from our members and partners, the Chicago Chapter will be hosting a series of events that will help members navigate networking, job searching, and developing professionally while working remotely. Maintaining a professional network is critical for most of us more now than ever. Please continue to utilize our [M2M tools](#) on the website to stay connected to fellow members.

To our great disappointment, the Board has decided not to proceed with an in-person awards banquet this year. As one member put it, "If I have to wear a mask at a dinner meeting, I'm not showing up." We agree that a dinner meeting and social distancing just don't mix. This year, awards will be issued virtually through our website, summer newsletters and social media posts. We know this is one of the Chapter's favorite events and we expect to hold it in person next year.

This is my last newsletter letter and final month as President. It has been an honor to serve the Chicago Chapter this year working alongside an amazing board. I can think of no better person to guide our chapter through these challenging times than our incoming president Brad Schwab ([Read Brad's Member Spotlight](#)). His marketing and communications background have already informed the direction of our Chapter as we shift to remote meetings. I know there are great things in store for the upcoming year, even if the logistics of events are different.

**M2M** CONNECTION  
Built By Members For Members



Submit content for the Change Order Newsletter using our M2M Connection Tool Box.

[CLICK TO VIEW OUR LEADERS](#)

## Thank You 2019-2020 Leaders For Your Time & Dedication

Our amazing leadership helped keep our chapter thriving through all the ups and downs of the past 12 months. Thank you to our Officers and Directors who have served the chapter and also to all those who served on a committee.

**President**  
**Andrea Baird**  
CSI, CDT, CCCA



**President-Elect**  
**Brad Schwab**  
CSI, CDT



**Vice President**  
**Scott Conwell**  
FCSI, CDT



**Vice President**  
**Jennifer Friedland**  
CSI, CDT



**Treasurer**  
**Elias Saltz**  
CSI, CDT, CCS



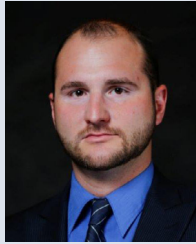
**Secretary**  
**Chris Carpenter**  
CSI, CCPR, CDT



**Past-President**  
**Peter Grotenhuis**  
CSI, CDT



**Membership Officer**  
**Robert Moretti**  
CSI, CDT



**Director**  
**Guadalupe Casimiro**  
CSI



**Director**  
**Randall Chapple**  
CSI, CDT, CCS



**Director**  
**Paul Fogarty**  
CSI, CDT



**Director**  
**Rachel Nava**  
CSI, CDT



**Director**  
**Jeremy Olsen**  
CSI, CDT, CCS, CCCA



**Director**  
**Heather Rice**  
CSI, CDT



Thank you to CSI Chicago's Director to the North Central Region will be Drew Clausen, CSI.

## CSI Chicago Platinum Partners

**3M** Science.  
Applied to Life.™

**Senergy®**

**BEHR**

**BLUE LINE**  
BUILDING \* PRODUCTS

**CON  
SPEC  
TUS**

**CUSTOM®**  
TILE INSTALLATION SYSTEMS

**MAPEI®**

**RENOVATION**  
by MAXXON®

**DUPONT®**  
**Tyvek.**  
Parksite

**Pella**  
COMMERCIAL

**PAC-CLAD**  
PETERSEN  
A CORLENE COMPANY

**BUILDING TRUST**

**Sika®**

**SMARTci**  
SMARTER BY DESIGN. PROVEN BY PERFORMANCE.

[Click here](#) to contact a local representative.



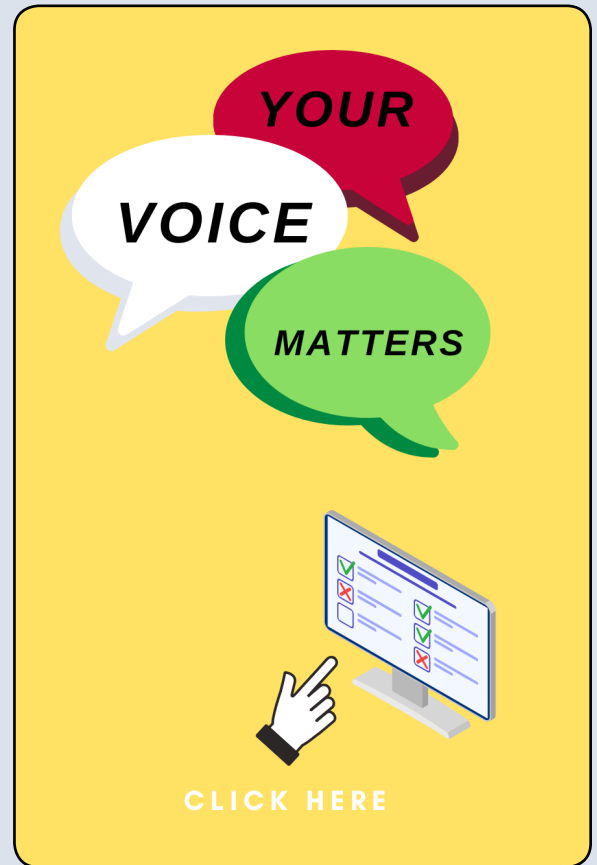
## Programming Survey - Help Us Help You

Your input as a member is more important than ever during this time of uncertainty and change. Our programming has been predominantly in-person meetings in the past but due to COVID-19 we are working to provide value beyond the in-person meeting while also developing a plan of action to get back to in-person meetings.

In an effort to develop relevant programs and events for the upcoming CSI Chicago Programming Year (July 1 - June 30), we have developed a short 9 question multiple choice survey for members to fill out and provide their input. Please take a few minutes to fill out the survey to help us better serve you and the Chicago AEC community as we navigate this uncertainty and change.

**Survey closes June 5 at 5:00pm.**

**FILL OUT SURVEY NOW**



**Before**



**After**

Holden Block—1027 W. Madison, Chicago

Chris Carpenter, CSI, CCPR, CDT

Architectural Consultant | 630.675.4750

ccarpenter@pella.com



COMMERCIAL

## BLUE LINE BUILDING ★ PRODUCTS

Independent Manufacturers Rep

"The Right Product for the Right Application"

**Morin®**

A Kingspan Group Company

**FUNDERMAX®**

for people  
who create



[www.Bluelinebp.com](http://www.Bluelinebp.com)

Matt Martino  
773.251.0066

[mmartino@bluelinebp.com](mailto:mmartino@bluelinebp.com)





## Member Spotlight

Heather (Yario) Rice CSI, CDT

Heather started working for a flooring contractor in California in 2002. Through her flooring career, Heather has also worked for a major manufacturer and she started her own company representing manufactures and doing independent floor moisture testing. Currently she still owns her own company, which has WBE affiliation, and is also employed by Maxxon Corporation where she drives their new line, Renovation by Maxxon.

Heather remembers early on in her career she worked on Wrigley's new headquarters which included a new concept of bringing indoor and outdoor spaces together and was one of the first projects to use "new" Large Format Tile. The project also started to move up the Chicago North Branch of the river.

Heather shares that CSI has given her not just great work contacts to collaborate with but also that many of the members have become her friends and says that CSI Chicago is one of the best associations that she has ever been involved with. When she joined years ago, she said the seasoned Specwriters showed her what they needed from her and taught her how she could be of a benefit to them. Heather says it has helped her become the successful consultant to so many different types of customers in this industry.

Next time you connect with Heather, ask her about when she won a boxing match in 2018.

## New Chapter Member

**John Goers, CSI**  
*Architectural Building Solutions Inc*

**Caroline Kirker, CSI-EP**  
*SOPREMA*

**Ron Sucik, CSI**  
*Technoform*

## Share To Stay Connected

### It's more important than ever right now.

CSI Chicago is not a name or a logo, its all about you, our members! Our members stay connected by driving the content of our newsletter, website, email, and social media.

Right now, we are in need of content and if you are anything like us, you are in need of ways to stay connected. Please give us a few minutes to contribute and stay connected. By submitting things like a **member spotlight form**, **sharing a project** your firm completed, or **recommending an article**, you get featured.

**M2M** CONNECTION *Connecting Members while we're apart.*

**CustomTECH**  
FLOORING PREPARATION SYSTEMS

## Durable Floor Covering Solutions



Patching



Primers



Moisture Control



Levelers

Under Carpet, Wood, Vinyl, Laminate and Ceramic Tile

**CustomTechFlooring.com**

Howard Jancy, CSI, CDT | Commercial Architectural Services  
Howard.Jancy@cbpmail.net | 312-515-9215



A DIVISION OF  
**CUSTOM**  
A QUIKRETE COMPANY

**BASF**  
We create chemistry

**Senergy**

## Durable, Code-Compliant Wall Systems with Unlimited Design Flexibility

### Introducing Insulated Masonry Veneer Systems

Fully-integrated exterior cladding systems with a continuous air and water-resistive barrier and insulation for superior performance. Insulated Masonry Veneer Systems feature BASF MaxGrip Veneer Mortar, a high-strength, specially-formulated setting bed mortar used to adhere natural and manufactured stone, tile, and thin brick veneer.

Learn more at [www.senergy.basf.com](http://www.senergy.basf.com) or contact your local BASF representative, David Meyers at [david.meyers@basf.com](mailto:david.meyers@basf.com) or 630-423-1980.

© 2019 BASF Corporation. All rights reserved.

## Remote Learning Library

Welcome to our remote learning resource library. This library serves as a resource for online education opportunities provided by CSI Chicago members and partners. This library is updated weekly.

All online educational opportunities listed are approved for AIA CES continuing education credits, CEU's for your self-reported CSI certification CEUs, and some events may be approved for other CEUs. Use the links below to learn more about individual events, the CEUs they offer, and to register.

CSI Chicago does not facilitate or manage the logistics or details of the online educational opportunities listed below. Attendee management, capacity, content and CEU management and fulfillment is managed by the member or partner provider.



### Events coming up the first week of June:

- 6/01, 1:00pm - [Best Practice Designs and Construction Methods for Multifamily & Commercial Building Enclosures](#) by DuPont
- 6/02, 12:00pm - [Installing Fenestration in Exterior Insulated Walls](#) by Pella Corporation
- 6/03, 11:00am - [System Selection and Design](#) by Johns Manville
- 6/03, 11:00am - [Designing High Performance Facades](#) by Technoform
- 6/03, 12:00pm - [The Benefits of Mineral Wool as Continuous Insulation](#) by Owens Corning
- 6/04, 11:00am - [Troubleshooting Masonry Construction](#) by Prosoco

[SEE ALL REMOTE LEARNING OPPORTUNITIES](#)

### Looking To List An Opportunity?

CSI Chicago Chapter members and partners that would like to be a provider can [click here](#) to learn more.

## Membership Milestones

### 25 Years

**George Reigle, CSI, AIA, NCARB**  
*GreenAssociates, Inc.*

### 30+ Years

**Stuart Berger, RA, CSI, CCS, CDT, AIA (34 yrs)**  
*studioB design LLC*

**Richard Ray, CSI, Member Emeritus, CDT (53 yrs)**

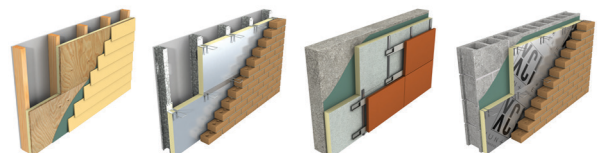
*Thank you to all of our members who are celebrating an anniversary with CSI Chicago this month.*

**Renee Doktorczyk, FAIA, CSI, CCS, SCIP**  
Renee@ArchiTechSpec.com

**ArchiTech**  
CONSULTING, INC.

800 E. Northwest Hwy, Ste 208  
Mount Prospect, IL 60056-3457  
Tel: 224.345.3450

## Energy Efficient Xci Polyiso



**Brad Schwab • 630-772-3516**  
bschwab@schwabgroup.net  
www.hunterpanels.com



## Member Virtual Happy Hour: Music and Mingling

Tuesday, June 16, 5:00 - 6:00 PM



Join your fellow CSI Chicago members for a virtual happy hour – IT'S EVOLVED! On June 16 at 5pm, members are invited to come together for an hour of music and mingling. We will have Drew Clausen, chapter member and musician, performing live while members practice networking through fun challenges in the virtual world. Register and save your spot today!

### REGISTRATION

#### Links to learn more about Drew Clausen:

- [Drew's CSI Profile](#)
- [Drew's LinkedIn Profile](#)
- [Drew's Music Website](#)

Photo courtesy of [www.drewclausen.com](http://www.drewclausen.com).

## Leverage LinkedIn For Your Job Search During The Pandemic

Tuesday, June 23, 4:00 - 6:00 PM

Presented By: Wayne Breitbarth, CEO of Power Formula LLC

Get noticed. Get past the gatekeeper. Get hired. LinkedIn is the #1 search tool used today by both job seekers and employers alike. Are you using LinkedIn to its fullest to get a job?

Wayne Breitbarth, the author of the bestselling book *The Power Formula for LinkedIn Success*, has taught more than 100,000 people how to harness the full power of LinkedIn for their businesses and careers, and he's presented hundreds of job search seminars.

You'll learn simple tips and shortcuts to:

- Create a winning profile that will have recruiters and hiring managers knocking on your door
- Get your LinkedIn profile found first
- Uncover hidden information that will improve your chances of getting the job
- Get a leg up on other candidates by connecting with insiders at your target companies
- Tap into your connections for help in landing the perfect job
- Effectively communicate with potential employers and target companies

#### Cost For 2 Hour Program Held Via Zoom Meeting:

**CSI Chicago Members: Complimentary**

**Non-Member Professionals: \$40\***

*(3 or more years of experience in construction)*

**Non-Member Emerging Professionals: \$20\***

*(Fewer than 3 years of experience in construction)*

**Non-Member Student: \$10\***

*(Full-time student enrolled in an undergraduate or graduate program)*

**\*Non-members save 50% on their registration fee if they register by Tuesday, June 16, 2020.**

Limited to first 100 registered attendees. See registration to learn how to attend anonymously.

### FULL DETAILS & REGISTRATION

**Jeff M. Diqui**

Director, Industry Development  
and Technical Services

Office: 630-396-7141

Cell: 630-606-8220

[jdiqui@imiweb.org](mailto:jdiqui@imiweb.org)

2140 W. Corporate Drive  
Addison, IL 60101



**INTERNATIONAL**

**MASONRY**

**INSTITUTE**

[www.imiweb.org](http://www.imiweb.org)

IBEW 14

## Memorable Metal



**Snap-Clad**  
Metal Roofing System  
Mill finish



CASE STUDY @ [PAC-CLAD.COM/TALLAHASSEE-RES](http://PAC-CLAD.COM/TALLAHASSEE-RES)



## Construction Industry Predictions For A Post-COVID-19 World

Republished From *The Construction Specifier*

As the novel coronavirus continues to affect all aspects of life and work, many in the architecture, engineering, and construction (AEC) industry are wondering what the post-COVID-19 future holds. Ramzi Jreidini, CEO of [Handiss](#), a talent management company specializing in the AEC sector, shares his insight and predictions for the industry in a post-pandemic world.

### What are some of your construction recruitment predictions post-COVID-19?

Recruitment post-COVID-19 across many industries is going to see a partial shift to remote work, or positions that allow remote work for one or two days a week. I believe the construction industry will also embrace remote work. COVID-19 has forced people to figure out whether their work can be done remotely, and many, including engineers, architects, technologists, and project management personnel have found it can, and they are going to get used to it as remote work is going to be the new norm for 12 to 18 months, and probably more. Such a long time will help people get used to and enjoy remote work (because it works and it has great benefits), so it is something that is probably sticking around for the long haul. Recruitment in the industry may therefore enable more flexibility for candidates who are not necessarily close to

the projects or offices they are needed at.

On a practical note, the landscape of recruitment may shift from horizontal platforms like LinkedIn and Indeed to verticalized labor marketplaces related to the AEC industry. Verticalized labor marketplaces are platforms designed for a specific industry. The argument is there will be so many people looking for work once COVID-19 passes that companies would need a more efficient way to hire, and the best way to do that is through such platforms.

### What are some of the biggest challenges the AEC industry faces right now due to the COVID-19 pandemic?

The AEC industry has taken a hit like most other industries across the nation and the world, and the impact has been hard. AEC companies have had projects cancelled or delayed in droves, and it is difficult to estimate when projects will get back on track, and how growth will be impacted the next few years.

Many employees have been laid off. Some engineering and architecture companies are having their employees working

*Article continued on the next page.*



**RENOVATION**  
by MAXXON®

**JUST CLEAN,  
PRIME & POUR**

**YOUR GO-TO SELF-LEVELER**

800-238-8461  
Maxxon.com/123EZ

**LEVEL EZ®**



Now more than ever...

**Transparency  
Transforms –**

**Behaviors  
Communication  
Results**

**CONSPICUOUS**

[Learn How.](#)

*Solutions for  
Revolutionizing  
the AEC Industry :*

*Systems and Performance  
Documentation  
Construction Specifications  
Risk & Quality Advisory*

Elias Saltz, CSI, CCS  
Chicago, IL  
609 628 2390  
[esaltz@conspicuousinc.com](mailto:esaltz@conspicuousinc.com)

## Construction Industry Predictions For A Post-COVID-19 World

(Continued from previous page)

on an hourly basis from home when there is project work. Construction companies and their projects are on hold until lockdowns ease, while project durations and costs are on the rise due to slower progress and huge disruptions in supply chains. Challenges are coming from all angles and the industry is scrambling to figure out how to ease the impact and do damage control.

### How can the AEC industry limit the impacts caused by the current pandemic?

The good news about the AEC industry is that many functions, such as architecture, engineering, and project management can be done remotely. As for construction companies, they can take on more health and safety precautions to increase social distancing and protect their staff on project sites. Construction companies can also start embracing new technologies for project monitoring and management that lessen the need for physically being onsite. All of this means projects can still proceed from design to execution and operation, although at some added cost.

### What are some tools AEC professionals can use to get ahead of the curve?

I think five years down the line, we are going to see a lot more technological innovations being used across the industry, and AEC professionals should start seriously looking at what startups and innovative industry players are doing. The future is in software and hardware made for AEC; communication tools, drone tech, augmented reality (AR), virtual reality (VR), building information modeling (BIM), robotics, cloud software, modular construction, and much more are already making huge leaps in the industry.

To get ahead of the curve, AEC professionals should learn about these new technologies, embrace them, and start using them.

### What do you predict will be the short- and long-term effects of COVID-19 on the AEC industry/community?

I believe that new technologies and construction methods will take priority in the near future as labor costs keep going up due to the increased health and safety regulations imposed by COVID-19. The industry was already suffering from the labor shortage problem, and COVID-19 has exacerbated matters even more now. Startups have been addressing the labor shortage problem by developing new tech solutions to reduce the demand for physical labor, and we are going to probably see even more venture capital investment in these startups as the problem just got bigger.

In the long-term, I expect this trend to continue and take root in the industry. I imagine the construction site of the future to be almost fully automated, with robotic labor, and small drones flying around for monitoring and delivering supplies. Engineers and architects will be to a large extent replaced by advanced software that can handle most of the design production. Over the last few decades, we have already seen leaps in software technology replace the need for huge numbers of draftspersons, and construction equipment capable of doing the work of tens of laborers. This trend will surely continue into the future, and we will see very exciting developments happening in the coming years.

[Click here](#) to view original article and leave a comment.



**MAPEI's warranted waterproofing solutions for balconies**

**Issues:**  
Weather, salts, efflorescence

**Solutions:**  
Frost/thaw- and submersion-resistant mortars, efflorescence-resistant grouts, expansion joints and a Mapethene waterproofing system

- 1 Concrete
- 2 Mapabond™ 700, Mapabond 710 or Mapabond 720 adhesive
- 3 Mapethene™ HT or Mapethene LT sheet waterproofing
- 4 Mapedrain™ 30, Mapedrain 35 or Mapedrain 50 drainage composite
- 5 Modified Mortar Bed
- 6 Mapelastic® 315 (with Fiberglass Mesh) or Mapelastic AquaDefense waterproofing membrane
- 7 Kerabond™ T / Keralastic®, Kerabond / Keralastic™ or Granirapid® mortar system
- 8 Ceramic or stone tile
- 9 Ultracolor® Plus FA or MAPEI Flexcolor® CQ grout
- 10 Mapesil™ T 100%-silicone sealant
- 11 UltraCare™ Penetrating Plus Stone, Tile & Grout Sealer penetrating sealer

Balconies can be challenging environments for tile or stone installations – whether over occupied or unoccupied space.

MAPEI offers waterproofing systems solutions from the substrate up. Best of all, these solutions qualify for MAPEI's Best-Backed™ system warranty, giving architects peace of mind when specifying MAPEI products.

For more information, visit [www.mapei.com](http://www.mapei.com) or call 1-800-992-6273.

 MAPEI USA



### Recommend An Article To Your Fellow Members

*Share an article that you found helpful and thought provoking or wrote with your fellow members. Please share your article by submitting the article recommendation form today.*

*Please [click here](#) and fill out a Article Recommendation.*



## The Results are In!

### News From CSI National

Congratulations and thank you to all the candidates who participated in the 2020 CSI Election. Thank you again to all the candidates who submitted their names and agreed to commit their time and energy to CSI, and thank you to all members who voted.

- Arthur "Cam" Featherstonhaugh IV, CSI, AIA, CDT - Chair-elect
- William A. Hayward, Jr., (Chip), CSI, CCCA, CDT - Treasurer
- George Wade Bevier, FCSI, CCS, LEED AP, SCIP, USGBC, CDT® - Director-at-Large
- Thomas A. Lanzelotti, RA, MA, CSI, AIA, NCARB  
Director from the Northeast Region
- Ellen Onstad, CSI, CDT - Director from the Northwest Region
- Lynsey Hankins, CSI - Director from the South Central Region

### The Proposed Bylaws Amendment

The proposed amendment to the CSI Bylaws temporarily adjusts the Board Secretary term of service in order to align it with the terms of the other Officers going forward. A majority of members approved this ballot initiative.

Thank you again to all the candidates who submitted their names and agreed to commit their time and energy to CSI, and thank you to all members who voted. [Read full report.](#)

## How We Move Forward

### A Message from CSI CEO, Mark Dorsey, FASAE, CAE

CSI's CEO, Mark Dorsey, FASAE, CAE shares what CSI is providing to members and the AEC community, and how we are answering the question "what's next?"



[WATCH THE VIDEO](#)

## CSI Learning Unit Guidelines

### News From CSI National

CSI has published updated Learning Unit (LU) guidelines for CSI certification renewals. The updates include a detailed list of educational activities that qualify for LUs, as well as clear guidelines for earning and submitting LUs during the 3-year renewal cycle.

To view the latest updates visit [CSI's Certification Renewal Page](#) or download the [Certification Renewal Guidelines PDF](#). See how easy it is to log your LUs! Watch our brief [How-To Video](#).

## CSI Chicago Gold Partners

**ArchiTech**  
CONSULTING, INC.

**VCI**  
HUNTER  
CONTINUOUS INSULATION

**team**  
III

[Click here](#) to contact a local representative.

## CSI Chicago Silver Partners

**ALLEGION**

**ARISTECH**  
SURFACES

**CRCA**  
CHICAGO ROOFING  
CONTRACTORS ASSOCIATION

**dormakaba**

**R R**  
**+ J** ENGINEERING  
ARCHITECTURE  
+ FORENSICS

**SCHWAB**  
GROUP

[Click here](#) to contact a local representative.