

June 2017

# CHANGE ORDER

CONSTRUCTION SPECIFICATIONS INSTITUTE CHICAGO CHAPTER



## *Thank You Volunteers!*

Like many organizations, the success of CSI Chicago Chapter relies heavily on the volunteer work of many. This past fiscal year we had 40 individuals serving on the board and committees - many serving on more than one - and countless other individuals volunteering for one-time volunteer efforts throughout the year. Pictured here are the board and committee members who were able to celebrate the year with us by attending the annual banquet on May 24. In addition to the individual volunteers, there were over 95 companies that contributed to the chapter this past year beyond membership dues.

Thank you to all the individuals and companies that participate throughout the year in so many different ways. You are all a big part of what keep CSI Chicago the biggest and, in our opinion, the best chapter in the country!

We encourage any one else interested to reach out and get involved. We look forward to another great year!

## QUICK LINKS

[UPCOMING EVENTS](#)

[PRESIDENT'S LETTER](#)

[SPONSORSHIP OPPORTUNITIES](#)

[MEMBER NEWS](#)

[CHAPTER NEWS](#)

[LEADERSHIP DIRECTORY](#)



773-466-4147

[csichicagochapter@gmail.com](mailto:csichicagochapter@gmail.com)

<http://chicago.csinet.org>



# TABLE OF CONTENTS

- PRESIDENT'S LETTER
- UPCOMING EVENTS
- MEMBER NEWS
  - ANNIVERSARIES AND NEW MEMBERS
  - MEMBER SPOTLIGHT
  - BEYOND THE CHAPTER
- CHAPTER NEWS
  - EVENT RECAP
- HOT TIP OF THE MONTH
- SPONSORSHIP AND MARKETING
  - UPCOMING OPPORTUNITIES
  - PARTNERSHIPS AND MARKETING
- INSTITUTE AND REGIONAL NEWS
- INDUSTRY EVENTS
- LEADERSHIP DIRECTORY
  - OFFICERS AND DIRECTORS
  - COMMITTEE MEMBERS
- CONTRIBUTED ARTICLES
- THE CLOSEOUT



Outstanding Chapter Commendation  
Chicago Chapter 12 time award recipient

## UPCOMING EVENTS

Improving the Performance of Finished Concrete Flooring  
Summer Series Roundtable: Wednesday, June 6, 12-1pm

White Sox Game and Tailgating  
Social Event: Friday, June 23, 2017

Curtain Wall Design  
Summer Series Roundtable: Wednesday, July 12, 12-1pm

Specifying Automatic Pedestrian Doors  
Summer Series Roundtable: Wednesday, August 9, 12-1pm

## SAVE THE DATE

Chapter Program: September 26, 2017, 5pm



## President's Letter

### Over & Out

Well, this is it- my last installment of our President's Letter. And while I am rather relieved that I won't need to write another, I am feeling some mixed emotions about my tenure as chapter president drawing to an end. I think we would agree that together we achieved a great deal of progress toward longer term goals this year, and that we had a blockbuster year of events (many conducted for the first time). Here's some highlights:

- The newly minted Young Professionals Committee put on three entirely new social/learning events over the course of the program year that were very well attended by many new faces.
- We developed new or renewed relationships with several venues for our programs, and we hope those relationships can continue to grow.
- The newsletter got a total makeover, with new formatting and feature articles. Feedback has been very positive, and I believe it to be one of the best

publications in the entire Institute.

- We are on the verge of rolling out our all-new website (hopefully in the next month).
- We assembled new, very professional-looking marketing materials for use in member recruitment and sponsorship/advertising opportunity marketing.
- While we were at it, we put together new letterhead and awards certificates using our updated branding/identity
- We inaugurated the Contractor Engagement Committee, tasked with increasing our presence in the contractor and subcontractor community
- We adopted a formal Membership Growth & Retention plan, which will act as a road map for our efforts in this crucial arena for years to come.
- We aggressively pursued awards, both for the chapter and for our stellar individual contributors, both at the regional and institute level
- We hosted a great, purely social/networking event in the form of Bowling Night in May- something the chapter hasn't done in about 10 years.
- We established an online volunteer coordination system using [SignUp.com](http://SignUp.com) to solicit and coordinate the many smaller but crucial volunteer opportunities. Also we have established the new leadership position of Volunteer Coordinator to



### NEED SUBFLOOR SOLUTIONS? WE'VE GOT YOU COVERED.

- PRIMERS AND MOISTURE MITIGATION SYSTEMS
- REPAIR, PATCHING, AND SMOOTHING COMPOUNDS
- FLOOR LEVELING COMPOUNDS AND UNDERLAYMENTS
- WATERPROOFING MATERIALS
- ADHESIVES



The best floors are based on subfloors from



Toll Free: 855.391.2649 [www.hpsubfloors.com](http://www.hpsubfloors.com)

President's letter continued on the next page...

	<b>Mark R. Nelson</b> President
	Nelson Testing Laboratory 717 Industrial Drive Elmhurst, IL 60126  Ph.: 630-501-0230 Fax: 630-501-0270  <a href="mailto:mnelson@nelsontesting.com">mnelson@nelsontesting.com</a> <a href="http://www.nelsontesting.com">www.nelsontesting.com</a>

## Chapter Partners

### PLATINUM PARTNERS



VIEWED TO BE THE BEST.®

### GOLD PARTNERS

Cultured Stone® by Boral®



UNION MASONRY CRAFTWORKERS  
CONTRACTORS & CONSULTANTS

HÄFELE



HPS NORTH AMERICA

### SILVER PARTNERS

ArchiTech  
CONSULTING, INC.



ALLEGION



NORCON  
Inc.



RULON INTERNATIONAL



## President's Letter (Cont.)

assist in managing this critical chapter function.

- We put on new roundtables, like the Meet the Reps roundtables & the Summer Series roundtables .
- We forged a new relationship with Rebuilding Together, a not for profit organization that arranges volunteer days to help deserving organizations improve their existing facilities or families improve their homes.
- We invested in new presentation equipment, office supplies, and branding materials.
- We continued to grow and develop our outreach to students at local universities with the CSI Chicago Student scholarship competition and with an Architecture School-themed monthly chapter program.
- We kept a balanced budget (take that, US Congress).

I am very proud of this list. None of this would have been possible without all the hard work of our many devoted volunteers and chapter leaders. Take a look at just some of them at the awards dinner in the cover photo of this newsletter issue. What a good-looking group! I am so thankful and proud of them for what they have accomplished.

That is the real reason I say I have mixed emotions about departing the presidency- while I am happy and relieved to have my tenure draw to a close, I will miss the chance to so closely work with such a dedicated group. And I also know of the many nagging things yet to be accomplished, and improvements yet to be implemented (digital archives, anyone?). So, there is a sense of “work left unfinished,” which makes me feel a bit forlorn about the end of the year.

But I am also thrilled about my successor, Melissa Gibson, and I am very excited to see what we will accomplish under her guidance and leadership. Melissa is smart, hardworking, graceful under pressure, and an excellent communicator and motivator. I know that we are in great hands, and I am equally confident in her ultimate successor, Peter Grotenhuis, who will assume the presidency in FY 2019. I look forward to the next few years being halcyon times for our chapter. I encourage all of you to continue to support CSI and our chapter by volunteering when and how you can, by participating in our events and by promoting us to your peers and employers. Together we can really do great things and improve the future of Chicago's built environment.

Have a great Summer and Best Wishes!

Jeremy Olsen CSI, CCS, CCCA, AIA, LEED AP



# Improving the Performance of Finished Concrete Flooring

## Summer Series Roundtable: Wednesday, June 7, 2017



**Presenter:** Nick Savage, CSI | Regional Sales Manager | PROSOCO's Regional Sales Manager

Learn the basics of how to get the most from finished concrete floors. Along the way we will discuss levels of finish, hardening-densifying and other aspects of finished concrete flooring not commonly known. The roundtable also shows how to protect and maintain finished concrete flooring, including tips for protecting finished floors from damage during building construction.



### Learning Objectives:

1. List two ways finished concrete floors “perform” that contribute to sustainability.
2. Compare the waste-generation characteristics of lithium-silicate hardener/densifiers to older potassium- and sodium-silicate hardener/densifiers.
3. Explain how regular maintenance contributes to sustainability of polished concrete floors.
4. Estimate the expected service life of a finished concrete floor and rate it for sustainability on a scale of “good-fair-poor.”

**Time:** 12:00-1:00 pm

**Location:** Thornton Tomasetti

330 N. Wabash Avenue, Suite 1500, Chicago

**Continuing Education:** 1.0 hour | AIA/CES/HSW PRO016 | USGBC Approved: 0920003819



[Click Here to Register](#)

**Reservations:** Required by Friday, June 2. Limited seating available on a first come basis. Complimentary to members and nonmembers. Registered nonmembers will be added to a waiting list until members are accommodated. Notification of available nonmember spaces is sent two business days in advance. If your plans change and you cannot honor a reservation, please contact the Chicago chapter so we can offer your seat to someone on the waiting list.

**Contact:** Email: [csichicagochapter@gmail.com](mailto:csichicagochapter@gmail.com) or Call: 773-466-4147

**About CSI Roundtables:** Sessions are held in an informal setting to encourage dialog and attendees are welcome to bring a snack or lunch. Topics are selected that are not product or industry specific and assist in building skills and knowledge to better work within the design and construction community. All members of the construction industry are invited to attend. If your plans change and you cannot honor a reservation, please contact the Chicago chapter.

**About the Speaker:** Based out of Chicago, Nick Savage is PROSOCO's Regional Sales Manager for the Upper Midwest. Nick is a construction industry veteran of over 10 years. For the majority of that time, he has worked with architects, contractors, and distributors on finished concrete flooring projects. He has been involved in high profile projects for The Ohio State University, GM, Ford, Miller/Coors, and Navy Pier. Nick is a member of the Concrete Polishing Association of America, CSI, and BEC.

## White Sox Game and Tailgating Friday, June 23, 2017

AIA Northeastern Illinois | AIA Chicago | CSI Chicago | CSI Northern Illinois



### Chicago White Sox vs Oakland Athletics

**TAILGATING STARTS AT 5:10PM**

**GAME STARTS AT 7:10PM**

**Fireworks after the game**

**Members, family and friends please plan to attend this fun summer event!**

**Individual Tickets: only \$25.00**

Section 154, Rows 25-34 confirmed

We plan to meet-up at US Cellular Field Parking Lot "A or B" for tailgating. Parking cost is on your own.

**Food and drinks at Tailgate provided by [ASSA ABLOY](#).**

Questions please contact: Dewain Peterson [dewain.peterson@assaabloy.com](mailto:dewain.peterson@assaabloy.com) or 630-338-5610

**Click Here to Register**

# Curtain Wall Design

## Summer Series Roundtable: Wednesday, July 12, 2017



### Presenters:

Kurt Wenzel | Architectural Sales Rep | YKK-AP AMERICA  
David Warden | Brand Manager | enerGfacade®

Curtain walls provide some of the most dramatic design details of a building. This course explains various types of curtain wall systems and their assembly. Attendees will explore design pressure calculation, installation and glazing processes. A recent trend toward more fabrication / assembly in controlled environment (Unitized) will be reviewed. Latest energy codes and the industry's response will be reviewed.



### Learning Objectives:

1. Differentiate the various types of curtain wall systems, anchoring systems and proper installation.
2. Discuss the variables for Design Pressure calculation and the use of wind speed and ASCE 7 calculators to assist on your project.
3. Examine Glazing Processes and how to select the best process for your application.
4. Recognize recent trends in energy efficiency and pre-glazing and the industry's response.

**Time:** 12:00-1:00 pm

**Location:** Thornton Tomasetti

330 N. Wabash Avenue, Suite 1500, Chicago

**Continuing Education:** 1.0 AIA/CES/HSW LU (Course #: YKK100 CW)



[Click Here to Register](#)

**Reservations:** Required by July 7. Limited seating available on a first come basis. Complimentary to members and nonmembers. Registered nonmembers will be added to a waiting list until members are accommodated. Notification of available nonmember spaces is sent two business days in advance. If your plans change and you cannot honor a reservation, please contact the Chicago chapter so we can offer your seat to someone on the waiting list.

**Contact:** Email: [csichicagochapter@gmail.com](mailto:csichicagochapter@gmail.com) or Call: 773-466-4147

**About CSI Roundtables:** Sessions are held in an informal setting to encourage dialog and attendees are welcome to bring a snack or lunch. Topics are selected that are not product or industry specific and assist in building skills and knowledge to better work within the design and construction community. All members of the construction industry are invited to attend. If your plans change and you cannot honor a reservation, please contact the Chicago chapter.

### About the Speakers:

Kurt Wenzel has 22 years of experience in the glass/glazing industry. He promotes the products and capabilities of YKK-AP to the Architectural and General Contractor community as he works to get YKK-AP included into project specs. He has responsibility for supporting their local Glazing Subcontractor customers in Illinois, Indiana and Wisconsin by trying to find projects for them to Bid while working thru any detail or product questions that arise.

David Warden is the enerGfacade® Brand Manager for YKK AP America's family of energy efficient fenestration (XT) products, and is responsible for spearheading marketing efforts both externally and internally for the product line. He has been with the company for over 15 years where he has served in various positions. He is beginning his sixth year as the enerGfacade® brand manager. Prior to, David worked as a Product Marketing Engineer, where he provided technical research and reviewed outside



# Specifying Automatic Pedestrian Doors

## Summer Series Roundtable: Wednesday, August 9, 2017



**Presenter:** Neal Stob | Architectural Consultant | NABCO Entrances, Inc.

Using specifications to relate end-user objectives and intentions on a specific project is one of the biggest challenges with automatic doors. Join us as we explore applications, codes and technology that all factor into selecting the best automatic pedestrian door for your project.

### Learning Objectives:

1. Explain the process of specifying automatic doors
2. Discuss the various types of automatic doors and best applications for use
3. Overview of industry codes, standards and definitions
4. Define basic sensor technologies



**Time:** 12:00-1:00 pm

**Location:** Thornton Tomasetti

330 N. Wabash Avenue, Suite 1500, Chicago

**Continuing Education:** 1.0 AIA/CES/HSW LU

[Click Here to Register](#)



**Boxed lunch will be provided courtesy of NABCO Entrances.**

**Reservations:** Required by August 4. Limited seating available on a first come basis. Complimentary to members and nonmembers. Registered nonmembers will be added to a waiting list until members are accommodated. Notification of available nonmember spaces is sent two business days in advance. If your plans change and you cannot honor a reservation, please contact the Chicago chapter so we can offer your seat to someone on the waiting list.

**Contact:** Email: [csichicagochapter@gmail.com](mailto:csichicagochapter@gmail.com) or Call: 773-466-4147

**About CSI Roundtables:** Sessions are held in an informal setting to encourage dialog and attendees are welcome to bring a snack or lunch. Topics are selected that are not product or industry specific and assist in building skills and knowledge to better work within the design and construction community. All members of the construction industry are invited to attend. If your plans change and you cannot honor a reservation, please contact the Chicago chapter.



**About the Speaker:** Neal Stob has spent the past nine years with NABCO Entrances, first as a Region Sales Manager and currently as an Architectural Consultant. Previously, he spent ten years selling the NABCO product in the Chicago area, and prior to that had a twenty-four year career in the aluminum storefront industry. Registered AIA CES/HSW presenter. CSI member for the past nine years. He has field experience in assisting clients develop effective solutions for all automatic/ICU door applications as required to satisfy both client and site specific needs. His present responsibilities include working with the architectural community to further product education, and assist in proper approach, design, and specification development regarding the wide variety of automatic door products. Please feel free to visit Nabco's website at [www.nabcoentrances.com](http://www.nabcoentrances.com), e-mail Neil at [nstob@nabcoentrances.com](mailto:nstob@nabcoentrances.com), or call 708-710-1950.

## Member News

### Anniversaries and New Members

#### Continuous years with CSI...

- 50 Richard Ray, CSI, CDT**  
**31 Stuart Berger, RA, CSI, CCS, AIA**  
*studioB design LLC*  
**29 George Middleton, CSI, AIA, LEED AP**  
*George Middleton & Associates, Inc.*  
**23 Peter Baker, CSI, CCPR, LEED GA**  
*Sika Sarnafil*  
**22 George Reigle, CSI, AIA, NCARB**  
*GreenAssociates, Inc.*  
**21 Jerry DeCicco, CSI, LEED AP**  
*Joseph J. Duffy Co.*  
**20 James Cross, CSI, CCS, AIA**  
**16 Gerald Bruti, CSI**  
*Chicago Transit Authority*  
**14 Deborah Burkhart, MBA, CSI, CCS, AIA, LEED AP**  
*Northwestern University*  
**11 Jeff Diqui, CSI**  
*International Masonry Institute*  
**9 John Dashner, CSI**  
*A & D Building Products*

- 8 Christopher Konitzer, CSI**  
*Dow Corning Corporation*  
**8 Archie Landreman, CSI**  
**8 Jeremy Olsen, CSI, CCS, CCCA, AIA, LEED AP**  
*Daylight Studio LLC*  
**6 Melissa Gibson, CSI, CCCA, AIA, LEED AP, NCARB**  
*Epstein*  
**5 Daniel Bulley, CSI**  
*Mechanical Contractors Association*  
**5 Christine Uhler, BA, MBA, CSI, CCPR, LEED AP, USGBC**  
*Rockfon*  
**3 Matthew Souza, CSI, CDT**  
**2 Amy Patel, CSI**  
*BASF*  
**1 Madolyn Cavazos, CSI-EP**  
**1 Brian Mullan, CSI**  
**1 Pat Ruban, CSI**

#### Welcome New Members...

- Maria del Pilar, CSI-S**  
**Antonio Escobedo, CSI-S**  
**Luke Kisielewski, CSI**  
**Somin Lee, CSI-S**  
**Michael Miller, CSI-EP**  
**Miller Settlemeyer, CSI**  
**Karen Swank, CSI**  
**Jacob Wall, CSI-S**  
*HDR*

#### Let's Celebrate Together

Share your personal or professional achievements by notifying the chapter at [csichicagochapter@gmail.com](mailto:csichicagochapter@gmail.com) for inclusion in the following month's newsletter.

The name that built an industry™

**Cultured Stone®** by Boral®

Sculpt the  
modern  
landscape.

With an eye on strong, contemporary designs that elevate trends and create demand, the Contemporary Collection from Cultured Stone® by Boral® serves as the zenith of the modern landscape. And with new additions, including Pro-Fit® Modera™ LedgeStone and Hewn Stone™, this latest extension allows you to create new, inventive designs that exceed your past limits. Keep pushing the boundaries of contemporary architecture and design with the entire Contemporary Collection, only from Cultured Stone® by Boral®.



Holly Hirsch  
[holly.hirsch@boral.com](mailto:holly.hirsch@boral.com) | 224.250.0317

MOMENTIVE

**Wesley Sherrer, CSI**  
Midwest Region Manager  
[wesley.sherrer@momentive.com](mailto:wesley.sherrer@momentive.com)  
+ 1 614 392 1015  
+ 1 614 314 9217 M  
Momentive Performance Materials Inc.  
6716 Damson Place  
Westerville, OH 43082  
[www.ge.com/silicones](http://www.ge.com/silicones)

  
Licensed Products

Section continued on the next page...

## Member News

### Remembering William Kiel, CSI, Member Emeritus, CDT, SCIP

Former CSI Chicago President (1981-1983) William Kiel passed away last month. A memorial article is currently being put together for Mr. Kiel and will be published in an upcoming newsletter. Pictured left, is Mr. Kiel in 2009 celebrating his 50th anniversary with CSI. He would have celebrated his 58 year as a member this month.



### Congratulations to those who have taken and passed their spring certification exams:

CDT Exam | **Taylor Neill, CSI, CDT** | Marvin Windows & Doors

### Members Recognized at CSI North Central Region Conference

#### Regional Commendation: Elias Saltz, CSI CCS LEED AP

*In grateful recognition of your outstanding and selfless service to the members of the North Central Region of the Construction Specifications Institute.*

#### Region Cooperation Award - International Masonry Institute

**Chicago Members: Scott Conwell, CSI, CDT, AIA, FAIA and Jeff Diqui, CSI**

*In appreciation of your outstanding and ongoing support of Specifiers, Specifying Architects, and Design Professionals through your invaluable partnership with the Chapters of the North Central Region.*

Scott Conwell, pictured right, was presented the award at the Chapter's Awards banquet in Chicago on May 24, 2017.



#### Certificate of Appreciation: Renee Doktorczyk, FAIA, CSI, CCS, SCIP

*For your efforts in serving the North Central Region as a member of the Nominating Committee for position of the Institute Director.*

#### President's Certificate of Appreciation: Elias Saltz, CSI CCS LEED AP

*For your hard work and leadership in creating a well-organized and well-designed Region Newsletter to improve communications to the members of the North Central Region.*

## The Right Materials



## The Right Way

Constructed by Experienced  
Union Craftworkers and  
Contractors

For answers to your masonry  
questions, call 1-800-IMI-0988



Scott Conwell, FAIA, CDT, LEED AP BD+C  
2140 W. Corporate Drive, Addison, IL 60101  
Phone: (630) 396-3144 EMail: [sconwell@imiweb.org](mailto:sconwell@imiweb.org)  
[www.imiweb.org](http://www.imiweb.org)



## Member Spotlight

Michael De Rouin, CSI, CCCA | President | FitzGerald Associates Architects

By: Anne Tolle Waliczek, CSI

### A Guiding Principal

He was that kid who knew all along he would be an architect. Now as principal architect and president of one of Chicago's legacy firms, Michael De Rouin considers guiding the next generation to be his most important, and rewarding role of his career.

Thursdays at FitzGerald are dedicated to the mentoring of young architects in a project-by-project discussion that brings principals and project architects together to share experience and guide professional development. Mike educates young architects on the paramount importance of patience, unwavering attention to details, and skilled management of a developer's re-direction to yield an efficient building.

"As much as architecture school prepares you for the profession, it doesn't really prepare you at all for the real world of project management," explains Mike. "School



can't get into the constraints of client management, real life work, real budgets, codes and building science to the extent required to be successful on a project. In our mentoring meetings we can discuss and share best practices for managing the harsh realities of project management and how to approach and manage a developer's goals and expectations."

In addition to giving back to his profession through

**Section continued on the next page...**

# We're more than just a paint company

- Extensive National Architectural Program
- Product and Environmental Certifications



Master  
Painters  
Institute

**BEHR**  
behr.com/architect

## Member Spotlight Michael De Rouin (cont.)

mentoring, Mike also demonstrates his passion for guiding youth through his active involvement in the Boy Scouts of America Eagle Scout mentoring, coaching track in his community and lending a hand at Berwyn Park District.

Mike De Rouin works tirelessly to raise the bar on how we all work collaboratively to build an efficient building, on budget, that achieves the owner's vision. He finds his ongoing involvement in frequent scouting expeditions provide a parallel model for successful project management: "In project teams, like teams in the wilderness, you have to rely on what you know and how you work together; and how to get separate groups and people to come together to accomplish a greater goal whether you face outdoor adversity, or complex issues that challenge overall building efficiency."

Mike also speaks fluently about the critical importance of "value design" early in the process to mitigate the need for "value engineering" later in the project cycle. Mike

leads the firm's Quality Assurance/Quality Control practice allowing him the opportunity to track a client's feedback and satisfaction with FitzGerald's process and management of the project. This close interaction with project details, team and client relationships has led to a strong pattern of repeat clients.

Currently, Mike is the principal architect on high profile projects such as: the 44-story apartment tower known as One South Halsted, a mixed-use, two tower project in River West (1001 W. Chicago), and a transit-oriented, mixed-use project called The Emerson, Oak Park's second-tallest building with two apartment towers and retail space adjacent to the Metra station. His deep portfolio also includes Wilson Yard, University Village, and the Montgomery Ward's building conversion. A 27-year veteran of Chicago's architecture community, Michael DeRouin has been a member of CSI's Chicago Chapter for 15 years, serving as president in 2011-2012.

[Sign up to write a member spotlight >>>](#)

**PRODUCTS FOR CONCRETE RESTORATION**

**WALL PROTECTIVE AND DECORATIVE COATINGS**

**AD MIXTURES FOR CONCRETE**

**PRODUCTS FOR STRUCTURAL STRENGTHENING**

**PRODUCTS FOR LARGE PROJECTS, DAMS, CANALS AND VIADUCTS**

**PRODUCTS FOR TILE AND STONE**

**PRODUCTS FOR ROAD MAINTENANCE**

**PRODUCTS FOR SPORTS FACILITIES**

**PRODUCTS FOR CEMENTITIOUS AND RESIN FLOORING**

**PRODUCTS FOR UNDERGROUND CONSTRUCTION**

**ELASTIC SEALANTS AND ADHESIVES**

**PRODUCTS FOR SYNTHETIC TURF**

**PRODUCTS FOR RESILIENT AND CARPET FLOORING**

**PRODUCTS FOR ACOUSTIC INSULATION**

**PRODUCTS FOR BELOW-GRADE WATERPROOFING**

**PRODUCTS FOR WOOD FLOORING**

**THE WORLD OF MAPEI**

**TOTAL ARCHITECTURAL SOLUTIONS**

As the leading global manufacturer of mortars, grouts and adhesives, MAPEI also offers the full spectrum of chemical products for construction projects – everything from dams, bridges and tunnels to malls, hospitals and condominium towers. We partner with the architectural community by providing a single source for system specifications, technical expertise/consultation and practical online architectural tools.

[www.mapei.us/architects](http://www.mapei.us/architects)  
Illustrations by Carlo Stanga

**MAPEI**  
AMERICANS - SPECIALTY - CHEMICAL PRODUCTS FOR BUILDING



## Beyond the Chapter

### Chicago CSI Members activities beyond Chicago Chapter

The following is a list of members of the Chicago Chapter of the Construction Specifications Institute that are volunteering for construction industry activities beyond the Chicago Chapter of CSI.

I hope to receive information regularly to expand this list and keep it current so that we can all be informed as to the breadth of member activities. Please send your construction industry volunteer activity information to me at:

[jstypka@jahn-us.com](mailto:jstypka@jahn-us.com)

Thank you,

Joe Stypka

#### Member Activities Beyond

##### Andrea Baird

Chicago CSI's representative judge for the Future Cities Competition 2017

##### Randy Chapple

Construction Specifications Institute Delegate to the Tile Council of North America (TCNA)

Handbook Committee and to the ANSI A108 Accredited Standards Committee for Ceramic Tile

Member of the U.S. Technical Advisory Group to ISO Technical Committee 189 on Ceramic Tile

Committee member of ASTM E2751/E2751M "Design and Performance of Supported Laminated Glass Walkways"

##### Larry Church

American Concrete Institute: Committee member of: 365 – Service Life Prediction, 362 – Parking Structures, 364 – Rehabilitation, 130 – Sustainability, and 329 – Performance Design of Concrete.

National Parking Association / Parking Consultants Council: member of the PCC

Precast/Prestressed Concrete Institute: active member with the Parking Structure and Sustainability Committees

##### Scott Conwell

International Masonry Institute (IMI) Delegate to the Tile Council of North America (TCNA) Handbook Committee and to the ANSI A108 Accredited Standards Committee for Ceramic Tile

Member of the U.S. Technical Advisory Group to ISO Technical Committee 189 on Ceramic Tile

##### Jeff Diqui

Building Enclosure Council – Chicago chapter, Program Director

Air Barrier Association of America (ABAA) Terminations and Flashings Committee

##### Renee Doktorczyk

Member of CSI North Central Region, Institute Director Nominating Committee

Section continued on the next page...



**Parksite**


1563 Hubbard Avenue  
Batavia, IL 60510

tel (800) 338-3355  
ext 200838  
cell (630) 788-0969  
fax (330) 875-1700


**Matthew Reed**  
Market Development Manager  
Sr. Certified DuPont™ Tyvek® Commercial Specialist  
[mreed@parksite.com](mailto:mreed@parksite.com)

**Chris Carpenter, CSI, CCPR**  
Architectural  
Representative

**Pella® Windows & Doors**  
27545 Diehl Road, Suite 100  
Warrenville, IL 60555  
Phone: 630.675.4750  
E-mail: [ccarpenter@pella.com](mailto:ccarpenter@pella.com)



COMMERCIAL





## Beyond the Chapter

### Chicago CSI Members activities beyond Chicago Chapter (cont.)

#### **Peter Grotenhuis**

Chicago CSI's representative judge for the Future Cities Competition 2017

#### **Frank Heitzman**

Construction Specifications Institute, UDS Program Task Team

#### **Alan Itzkowitz**

Construction Specifications Institute, Certification Strategic Group  
Northern Illinois Chapter CSI, Vice President

#### **Elias Saltz**

Construction Specifications Institute, Practice Area Curriculum Committee  
CSI North Central Region Electronic Communications Chair

#### **Joe Stypka**

National Institute for Building Sciences (NIBS), UDS Modules Task Team for the National CAD Standard (NCS)  
American Institute of Architecture (AIA) MasterSpec Architectural Review Committee  
American Architectural Manufacturers Association (AAMA) AMC Finishes Committee Member



—  
**YOUR REPUTATION STANDS ON A NAME**

# So Does Ours

—

*Generation after generation, Marvin Windows and Doors has built our reputation through dedication – the same dedication you build into every home. Together, we share a commitment to design, personal attention and the unparalleled ability to customize. As partners, we both draw from these strengths to build a reputation that can be shared.*

**CONTACT YOUR LOCAL, INDEPENDENT DEALER  
TO DISCOVER THE MARVIN DIFFERENCE TODAY.**

**MARVIN**   
Windows and Doors

**Built around you.®**

© 2016 Marvin® Windows and Doors. All rights reserved. ® Registered trademark of Marvin Windows and Doors.  
Builder: Seven Custom Homes, Austin, TX

## Chapter News

### Chicago Chapter Recognized at CSI North Central Region Conference

The Regional Awards banquet was held on May 5, 2017 during the NCR conference in Madison, Wisconsin. The Chapter was recognized for its efforts in our newsletter and our CSI2eye event booklet.

#### **Regional Electronic Media Award - CSI Chicago "Change Order" Chapter Newsletter**

*In recognition of the outstanding creativity and value of newsletter content tailored to encourage membership engagement and awareness.*

#### **Region Special Publication Award - CSI Chicago "CSI2eye" Event Booklet**

*In recognition of the commendable efforts involved to create valuable networking mechanism connecting individuals within the construction industry for exchange of knowledge.*

See which of our members also received recognition in at this event in our [members news section](#).

### Student Membership Grows in the Chapter

Last month we recognized the Somin Lee, the IIT student who received the CSI Chicago Scholarship. If you missed the article, there is also a write up posted on our [IIT Scholarship webpage](#).

This month, we welcome Somin Lee and 3 other IIT Students - Maria del Pilar, Antonio Escobedo, and Jacob Wall - to our chapter. The student memberships were sponsored by [SJ Mallein](#) as part of the Sponsor a Member program the chapter kicked off earlier this year. If you see these students at an event, please help welcome them to the chapter by introducing yourself and sharing your journey into the professional world and how CSI has added value in your career.

### Know someone who would enjoy being a part of CSI Chicago?

Thanks to the hard work and dedication of its members, the CSI Chicago Chapter is among the most distinguished and successful chapters in the United States. If you know someone who might be interested in CSI Chicago, please let us know or share our membership brochure with them.

[CSI Chicago Membership Brochure >>>](#)

Need hard copies? Please send an e-mail to Beth Winkler at [csichicagochapter@gmail.com](mailto:csichicagochapter@gmail.com) and she can mail you how ever many copies you need.

Section continued on the next page...

**Kathleen McGinley**  
Architectural Sales Representative, CSI

[kmcginley@mapei.com](mailto:kmcginley@mapei.com)  
Cell: (630) 808-9944



**MAPEI Corporation**  
1863 Tamohawk Ln., Naperville, IL 60564  
Website: [www.mapei.com](http://www.mapei.com)



**Häfele America Co.**  
3901 Cheyenne Drive  
Archdale, NC 27263-4000  
Phone 800 423 3531 x 5818  
Fax 336 862 7683  
Mobile 331 213 4545  
[dwarren@hafeleamericas.com](mailto:dwarren@hafeleamericas.com)  
[www.hafele.com](http://www.hafele.com)

**DAN WARREN**  
Regional Director

## Chapter News (Cont.)

### Volunteer Spot

Looking to meet a new CSI member or share a project or idea with the group? Please consider signing up for an article submission.

#### Contribute to this newsletter:

- Project Closeout (Approx. 250 word project summary your firm recently completed w/ 2 photographs)
- Hot Tip of the Month (Approx. 500 word article on a industry related tip for other professionals)
- Member Spotlight on New or Feature Member (250-500 words and photo highlighting a member)
- Event Recap (250+ word summary of the event program)

To sign up for one of these or read more about the tasks, or see what is open click this link to see our sign up on SignUp.com: [More details and Sign up here!](#)

If you have any questions about the expectations of the various tasks, contact:

Beth Winkler [csichicagochapter@gmail.com](mailto:csichicagochapter@gmail.com)



### Because your reputation is on the line every day.

We make DuPont™ Tyvek® CommercialWrap® for professionals who build quality into every job. After all, it's architects and contractors like you who have made us the industry leader for over 25 years. And you're why we continue to develop innovative products, systems and services for the commercial market, like the 10-Year Limited Warranty that gives added peace of mind with every job and the DuPont™ Tyvek® Specialist Network that supports you on and off the site. DuPont™ Tyvek® Weather Barrier Systems—they're all about building a better and even stronger reputation.

For more information contact:

**Matthew Reed**

*Market Development Manager*

*Senior Certified DuPont Tyvek Commercial Specialist*

(630) 788-0969



**Tyvek.**

DuPont™ Tyvek®: CommercialWrap® • Wrap Caps • Tape | DuPont™: FlexWrap™ • StraightFlash™ • StraightFlash™ VF • Fluid Applied WB

© 2016 DuPont. All rights reserved. The DuPont Oval logo, DuPont™, Tyvek®, Tyvek® CommercialWrap®, FlexWrap®, StraightFlash® and StraightFlash™ VF are registered trademarks or trademarks of E.I. du Pont de Nemours and Company or its affiliates.

16-0130



## Event Recap

### Annual Banquet and Recognition Night - May 24, 2017

By: **Jeremy T. Olsen, CSI, CCS, CCCA, AIA, LEED AP | Daylight Studio**

What a terrific night we had at the Annual Banquet and Recognition Night, held Wednesday May 24th at the Cliff Dwellers Club. We celebrated the many accomplishments of the chapter for the 2016-2017 program year, and recognized the many group and individual efforts and achievements.

The evening started off with a cocktail hour in the prestigious club's main meeting/dining space. And while the weather was a bit chilly we enjoyed taking in the great views from their amazing roof terrace overlooking Millennium Park and the rest of Chicago's "front yard." And as can be expected in our fair city, we were enchanted by the dynamic and everchanging weather over the course of the evening. While we sipped on cocktails and enjoyed lovely conversations, we watched a delightful slideshow of photographs from the many events held by the chapter over the course of the year. Like a digital yearbook, the slideshow brought back fond memories of great afternoons & evenings spent with friends in the interest of learning and professional growth.

We sat down to a table service dinner with multiple delicious courses served by the terrific staff at Cliff Dwellers. Around the time of the setting of the main course, the evening's award program kicked off with a slideshow presentation, recognizing and remembering so many of the past members of our chapter who worked to make CSI Chicago what it is today. Sadly, we recently learned of the passing of Mr. William Kiel, a past president of the chapter, and, as of the time of his death, the 2nd longest continuous member of the chapter's current roster. There will be a more extensive memorial biography of Mr. Kiel in an upcoming issue of the Change Order.

We recognized the many new members of the chapter in attendance, as well as the milestone membership anniversaries of a great number of our members. Kurt Moehlmann took the prize for being the most senior member of our august gathering, in terms of continuous years of membership with 38 years (surely, he'd say they've been the best years of his life). And we celebrated the several members in attendance who had managed to attend all the monthly chapter meetings this year with the Perfect Attendance Award!

Next, we celebrated the many chapter corporate partners and sponsors for their generous support of our organization. This support manifested itself

in several ways- through monetary sponsorship, through volunteerism on the part of company representatives in the activities of the chapter, and through making space available at their offices or showrooms for chapter activities. The list of recognized companies was extensive, but Corporate MVP Awards went to Pella Windows and Doors & DuPont Tyvek/Parksite for their truly outstanding support of our chapter.

**Article continued on the next page...**



## Event Recap (cont.)

Then followed the individual awards to the many folks who contributed so much of their time and talents to the good work of the chapter. Certificates of Appreciation were awarded to all members who participated in the leadership of the chapter by serving on the board or one of our many committees. Forty certificates were awarded, which vividly demonstrates just how many people it takes to make the chapter run like a well-oiled machine. Bravo to all of you! Other categories of achievement recognized were, “Rookies of the Year”, “Sophomore Superstars”, “Awards of Excellence”, and the Technical Award. Special awards were given to Elias Saltz for his many contributions (the “I Just Can’t Say No Award”), and to Deb Burkhardt and Stuart Berger (Lifetime Achievement Awards) for their many years of devoted service to the chapter, serving as Treasurer and Secretary, respectively. Thanks to each of you! Finally, the President’s Award was given to Chris Walsh for his several years as chapter Membership Officer, a challenging and often thankless job. He is very deserving of this accolade.



We then witnessed the swearing in of the new board and chapter leadership for FY 2018, as administered by Joe Stypka (the most distinguished-looking guy in the chapter, I think we’d agree). After the usual bumbling, all our future leaders wear successfully indoctrinated. This was followed by the happy occasion of the “handing-off of the gavel” from outgoing chapter president Jeremy Olsen to incoming chapter president Melissa Gibson. Another peaceful transition of what little power the chapter possesses was successfully accomplished!

While the evening’s official activities were over, many of us stayed quite a while longer enjoying the Cliff Dwellers bar, roof terrace, and each other’s company on a beautiful Chicago evening, and basking in the glow of a great year for CSI Chicago.

Huge thanks are due to our perennial one-and-only sponsor for the Awards dinner- Custom Building Products and the very talented & charming Howard Jancy. Thank you, Howard, for making this evening a possibility.



Pictures courtesy of Chris Carpenter, CSI, CCPR and Scott Conwell, CSI, CDT.

Check out our [Facebook page](#) for more event photos.

Section continued on the next page...



## Event Recap Bowling Night - May 11, 2017

By: Kira Rogatnik, CSI | Metl-Span

On Thursday, May 11, CSI Chicago Chapter had a fun filled evening Bowling event held at Lucky Strike, River East Center. A total of 55 Bowlers came out to participate. There was a total of 8 teams that competed for a variety of sponsored contests. The lucky winners were:

- Best team name went to “Bowl Movement”, sponsored by [National Gypsum](#), with a round of drinks for their team.
- Best attire, sponsored by [Parksite, Inc.](#), went to Taylor Neill, dressed as “Kinpın's Ernie McCracken.” Runner up was Tim Blatner in his lucky bowling shirt.
- Most gutters award, sponsored by [Metl-Span](#), went to Rachel Nava who smiled her way through the night.
- Most Strikes, sponsored by [Marvin Windows and Doors](#), went to Colby Esenther with 6.
- Highest individual score, sponsored by [Roxul](#), went to bowling all start Drew Bayley.
- Lowest individual score, sponsored by [Roxul](#), went to our good sport Debbie Warren.
- Lowest Team Score, sponsored by [Hilti](#), went to Slippery Slopers who's luck was not on their side that night.
- Middle of the Pack score, sponsored by [Advanced Building Products](#), went to Laura Gagliano.
- Most Spares, sponsored by [InPro](#), went to Noi Phonexayphova.
- The youngest player, sponsored by [Hilti](#), went to Max Chagovets.

A special thanks to the Lane Sponsors



**SJ Mallein Co.**



Article continued on the next page...



## Event Recap (cont.)

The event was a big hit with all the attendees. Lucky Strikes provides great food and service for our group. We had separate area for all the team lanes and table behind the lanes where the appetizers were served. Everyone was able to eat, play and mingle in between their turn for bowl.



Thank you to all our event sponsors:



And a final thank you to our social committee for their work in putting this fun event together!



Check out our [Facebook page](#) for more event photos.

[Sign up to write an event recap >>>](#)

## Hot Tip of the Month Streamline Door Scheduling

By: Laura A. Gagliano Assoc.AIA, CSI, CDT | Architectural Hardware Consultant | Allegion

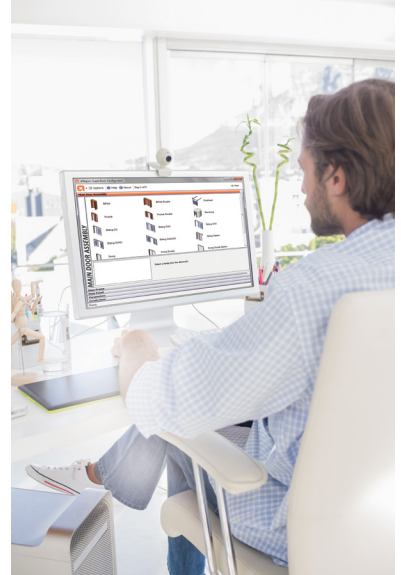
Anyone who has ever written a specification for door hardware knows it can be a tedious task. Code requirements change frequently and vary between jurisdictions. Understanding the proper division for each component can be confusing. And it seems that as the demands of security have increased, so has specifying door hardware.

An innovative set of Revit plug-ins from Allegion helps today's architects simplify, streamline and standardize door scheduling so that they can focus on what they do best — designing productive spaces. Spec Exchange and Superdoor are designed to simplify the entire experience.

**Productivity.** Plug-ins add efficiency to the door scheduling process. The innovative features help shorten the specification cycle, facilitate the exchange of information, eliminate errors and reduce the complexity of specifying door hardware.

**Flexibility.** These tools provide the opportunity to design and specify the right solutions — regardless of brand.

**Control.** System security and control is critical to the vitality of any firm. Spec Exchange gives architects full control of their designs, models and attributes at all times. It also allows them to specify any products or brands of door hardware.



### Allegion's Revit plug-ins

#### Spec exchange File Transfer

The Spec Exchange plug-in transfers data directly from Revit to an Allegion specification writer. Then, once the spec writer applies the hardware sets, the user can import the recommended door schedule back into Revit. The process is simplified, minimizing errors and manual data entry. And because Spec Exchange was created with the input from architects, it delivers only the features that architects value the most.

Learn more about how it works at [us.allegion.com/specexchange](http://us.allegion.com/specexchange)

#### SuperDoor Configurator

The SuperDoor Configurator plug-in allows architects to quickly construct generic doors and door families within their Revit designs. With everything they need right in SuperDoor, the design process for each opening is faster and more conducive to how the users work. It simplifies the selection of door models by guiding them through a series of opening components to configure an accurate, high-quality door family. And, because attributes are brand agnostic, architects can choose the products that best fit the needs of specific openings. Additionally, configurations can be re-purposed, saving them time and providing a platform to develop standards across their project portfolios.

In addition to these Revit plug-ins, Allegion offers a full spectrum of architectural services to help reduce the time spent preparing hardware specifications. From answering code and product questions to providing job-site reviews and pre- and post-installation inspections, Allegion trusted advisers are happy to help. Allegion also offers AIA-certified training on building codes, open architecture, electronic access control, vertical market topics and mechanical hardware. Contact Laura Gagliano for more information at [Laura.Gagliano@allegion.com](mailto:Laura.Gagliano@allegion.com).

[Sign up to share your hot tip of the month >>>](#)

## Sponsorship and Marketing

Now clearer than ever, you can see your path to visibility in the construction industry. From advertising and partnerships to event sponsorship, our newly designed media kit has all the great benefits you already know in a format that is easier to understand:

[CSI Chicago Marketing and Sponsorship Information >>>](#)

### Upcoming Event Sponsorship Opportunities

**There are no event sponsorship opportunities during the summer months.**

**Please see the chapter's [media kit](#) for a list of fall 2017 events to sponsor.**

### Become a Chapter Partner

Help the Chicago Chapter! Become a Partner and Promote Your Company to Influential CSI Professionals  
To support the Chicago chapter and continue the high level of programming and education, consider becoming a platinum, silver or gold partner. Increase your visibility among not only high-level CSI members, but the extended 2,000 design & construction professionals who have elected to receive our communications and view the website.

**Thank you to all the Partners who support the chapter every month! [View current partners >>](#)**

**For more information and rates on partnerships and other advertising and sponsorship opportunities, contact the chapter at:**

**Phone: 773-466-4147**

**E-mail: [csichicagochapter@gmail.com](mailto:csichicagochapter@gmail.com)**



[CSI Chicago Chapter Media Kit >>>](#)

### **Looking to Sponsor in a Different Way?**

**Consider sponsoring an individual's  
CSI Chicago membership  
or as an attendee at an upcoming event.**

**For more information:**

**[csichicagochapter@gmail.com](mailto:csichicagochapter@gmail.com)**



## Institute and Regional News

### "Capitol Capital Ideas" The 2017 CSI North Central Region Conference

Another successful CSI North Central Region Conference was held in Madison, Wisconsin on May 4-6. The three day event was filled with tours, educational events, leadership training, product show and an awards banquet. If you have not yet done so, please read the [May issue of the NCR newsletter](#) for event recaps, personal reflections and event photos. More information from this event will be posted on the [CSI NCR website](#) in the near future as well as the next few monthly publications of the newsletter.

## CONSTRUCT 2017



**REGISTRATION FOR CONSTRUCT IS NOW OPEN.**  
EARLY BIRD RATES ARE GOOD THROUGH JUNE 13TH.

[REGISTER NOW >>>](#)

CONSTRUCT is the only dedicated national trade show and educational conference for the commercial building teams that spec and source building products. CONSTRUCT links thousands of industry leaders to procure real-world, practical knowledge for building success. CONSTRUCT features an expansive show floor, solutions-based accredited education program and networking events to help you connect with the industry... Connect with hundreds of product and service manufacturers to discuss how they can help with your project planning and design vision needs. From fire suppression to finishes, thermal protection to technology, we have what you need.

[More Information, schedules, speakers, etc. >>>](#)

### *The Construction Specifier Magazine*

*The Construction Specifier* is the official magazine of CSI. Click the photo to the right to read current industry articles and the latest issue.



## North Central Region Newsletter



Find out what is happening throughout the region by reading the [NCR monthly newsletter](#).

## Locate a Chapter or Region

Click on the map be taken to the chapter locator webpage.



**MARVIN**  
Windows and Doors  
Built around you.®

**Taylor Neill**  
Architectural Project Manager -  
Chicago  
401 State Ave. N.  
P.O. Box 100  
Warroad, MN 56763

**Integrity**  
from MARVIN  
Windows and Doors

Built to perform:

Cell: 312-833-1719  
Toll Free: 800-834-7497  
Fax: 218-386-4216  
e-mail: [taylorneill@marvin.com](mailto:taylorneill@marvin.com)  
[www.marvin.com](http://www.marvin.com)

## Industry Events

### Masonry Monday: Challenges and Solutions for Today's Ceramic Tile and Stone Installations

**Monday, June 5, 2017**

Held at 2140 W. Corporate Dr., Addison, IL

Presented by Schluter Systems.

This program is registered with AIA for 1.0 HSW Learning Unit. There is no charge to attend, but seating is limited.

Program Details and Registration: <https://goo.gl/3HbhoF>

For additional information contact IMI at (630) 396-3144 or [tindelli@imiweb.org](mailto:tindelli@imiweb.org).



### Northern Illinois Masonry Seminar Series: Advanced Air Barriers for the Building Envelope

**Tuesday, June 6th, Rockford**

Held at Hilton Garden Inn, 7675 Walton St., Rockford, IL 61108

Presented by Scott Wolf, Henry Company

This program is registered with AIA for 1.0 Learning Unit.

There is no charge to attend, but seating is limited.

Program Details and Registration for Rockford location: <https://goo.gl/JbHABD>

For additional information contact IMI at (630) 396-3144 or [tindelli@imiweb.org](mailto:tindelli@imiweb.org).

**Wednesday, June 7th, Rock Island**

Held at Plumbers & Pipefitters Local 25, 4600 46th Avenue, Rock Island, IL 61201

Presented by Scott Wolf, Henry Company

This program is registered with AIA for 1.0 Learning Unit.

There is no charge to attend, but seating is limited.

Program Details and Registration for Rockford location: <https://goo.gl/ZhEFgt>

For additional information contact IMI at (630) 396-3144 or [tindelli@imiweb.org](mailto:tindelli@imiweb.org).

### The Heavy Timber High Rise: Building Tall with Wood in the 21st Century

**Thursday, June 8, 2017 8:00 AM to 12:45 PM**

Harris Bank Auditorium, 115 South LaSalle Street, 3rd Floor, Chicago

An event for anyone involved in the economic planning, design, construction and operation of high rise structures and interested in the current status of use of wood and engineered wood products in these type of structures. This includes facilities managers, developers, building owners, architects, interior designers, engineers, contractors, and subcontractors.

Continuing Education: Four hours of HSW continuing education credits

[Program information, including speakers and topics >>>](#)

Section continued on the next page...

## Industry Events (cont.)

### "Wednesdays with Sam"

#### **Presented by the Illinois Structural Masonry Coalition**

Sam Rubenzer, a structural engineer and principal of FORSE Consulting, has specific expertise in structural masonry design and a unique talent for adapting the latest finite element software tools to get the most out of masonry assemblies and systems. Sam is an expert who can teach other SE's to become structural masonry experts using their current software.

The goal of introducing Sam to the structural engineering community in Chicago is so that Sam can come to your office and demonstrate the effectiveness of structural masonry through instruction on how to use your existing SE software to create efficient structural solutions with low cost, readily available and expedient masonry.

For additional information and to book a time for Sam to come to your office, contact IMI at (630) 396-3144 or [tindelli@imiweb.org](mailto:tindelli@imiweb.org).



COMMERCIAL  
SOLUTIONS

WOOD • FIBERGLASS  
ALUMINUM • VINYL

LEARN MORE

Contact your local team:

Chris Carpenter, CSI, CCPR | Architectural Representative  
[ccarpenter@pella.com](mailto:ccarpenter@pella.com) | 630-257-1465 | [PellaEFCOSolutions.com](http://PellaEFCOSolutions.com)

© 2016 Pella Corporation



## Leadership Directory

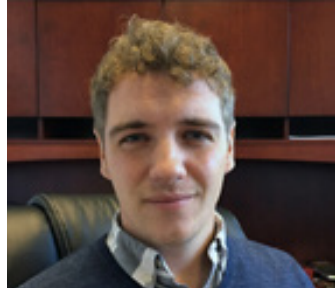
### Officers and Directors July 2016 - June 2017



President  
[Jeremy Olsen](#)  
CSI, CCS, CCCA, AIA, LEED AP



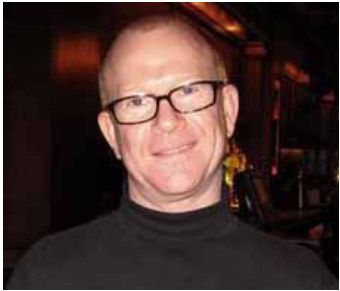
President-elect  
[Melissa Gibson](#)  
CSI, CCCA, LEED AP



Vice President 2018  
[Peter Grotenhuis](#)  
CSI, CDT



Vice President 2017  
[Scott Conwell](#)  
CSI, CDT, FAIA



Secretary 2017  
[Stuart Berger](#)  
CSI, CCS, AIA



Treasurer 2017  
[Deborah Burkhart](#)  
CSI, CCS, AIA, LEED AP



Membership Officer 2017  
[Chris Walsh](#)  
CSI, CDT, LEED GA



Director 2017  
[Tim Blatner](#)  
CSI, LEED AP



Director 2017  
[Kira Rogatnik](#)  
CSI, CDT



Director 2017  
[Drew Clausen](#)  
CSI



Director 2018  
[Andrea Baird](#)  
CSI, CCCA, AIA, P.E., LEED AP



Director 2018  
[Chris Carpenter](#)  
CSI, CCPR



Director 2018  
[Robert Moretti](#)  
MBA, CSI, CDT



Past President 2017  
[Elias Saltz](#)  
CSI, CCS, LEED AP



N. Central Region Director  
[Matthew Nordloh](#)  
CSI, CCPR, LEED GA



Executive Director  
[Beth Winkler](#)

Board meetings are typically held 1 hour prior to chapter meetings and open to all members to attend. If you would like to attend, send RSVP to [csichicagochapter@gmail.com](mailto:csichicagochapter@gmail.com)

## Leadership Directory Committee Members

Awards - Chapter	Chair	Jeremy T. Olsen, CSI, CCS, CCCA, AIA, LEED AP	Jeremy@daylightstudioarch.com
Awards - Institute	Chair	Elias Saltz, CSI, CCS, LEED AP	Elias@ArchiTechspec.com
Awards - Regional	Chair	Melissa Gibson, CSI, CCCA, LEED AP	mgibson@epsteinglobal.com
By-Laws	Chair	Randall A. Chapple, CSI, CCS, AIA, SE	rchapple@gpchicago.com
Certification	Co-Chair	Dan Smith, CSI, CCPR, LEED AP	Dan.R.Smith@saint-gobain.com
Certification	Co-Chair	Larry Nordin, CSI, CCS, AIA	larry.nordin@scb.com
Certification	Committee	Colin O'Donoghue, AIA, LEED AP BD+C	od.colin@gmail.com
Communications	Chair	Stuart Berger, CSI, CCS, AIA	studiob57@comcast.net
Communications	Newsletter Editor	Beth Winkler	csichicagochapter@gmail.com
Communications	NewsL. Committee	Elias Saltz, CSI, CCS, LEED AP	Elias@ArchiTechspec.com
Communications	Website Editor	Beth Winkler	csichicagochapter@gmail.com
Communications	ECommunications	Randall A. Chapple, CSI, CCS, AIA	rchapple@gpchicago.com
Communications	Graphics	Peter W. Grotenhuis, CSI, CDT	peter@sjmallein.com
Communications	Committee	OPEN	
Continuing Education	Coordinator	Joseph A. Stypka, FCSI, CCS, FAIA	jstypka@jahn-us.com
Continuing Education	Committee	Scott Conwell, CSI, CDT, FAIA, LEED AP	sconwell@imiweb.org
Contractor Engagement	Chair	Heather Rice, CSI	hrice@Hpsubfloors.com
Contractor Engagement	Committee	Patrick J. Duffy, Jr., CSI	pduffy@abuildingproducts.com
Contractor Engagement	Committee	Scott Conwell, CSI, CDT, FAIA	sconwell@imiweb.org
Contractor Engagement	Committee	Jennifer R Friedland CSI, CDT, LEED GA	Jennifer.R.Friedland@saint-gobain.com
CSI2eye	Co-Chair	Kurt Moehlmann, CSI, CDT	rpikurt@aol.com
CSI2eye	Co-Chair	Kira Rogatnik, CSI, CDT	krogatnik@metlspan.com
CSI2eye	Committee	Alan Itzkowitz, AIA, FCSI, CCS, CCCA, NCARB, LEED AP	alan.itzkowitz@gmail.com
Finance Committee	Chair	Deborah Burkhart, CSI, CCS, AIA, LEED AP	dabdab@bus.illinois.edu
Finance Committee	Committee	Stuart Berger, CSI, CCS, AIA	studiob57@comcast.net
Historian	Chair	W. Dean Walker, CSI, CCS, AIA	deanspecs@gmail.com
Historian	Committee	Elias Saltz, CSI, CCS, LEED AP	Elias@ArchiTechspec.com
Membership	Chair	Chris Walsh, CSI, CDT, LEED GA	cwalsh@inprocorp.com
Membership	Committee	Randall A. Chapple, CSI, CCS, AIA, SE	rchapple@gpchicago.com
Membership	Committee	David O'Bryan Jr., CSI, CDT	dobryan@rustoleum.com
Membership	Committee	Missy Ruminski, CSI-EP, Affiliate AIA Chicago	Missy@tuschalleng.com
Membership	Committee	Robert Moretti, MBA, CSI, CDT	rmoretti@tremcoinc.com
Nominating	Chair	Melissa Gibson, CSI, CCCA, LEED AP	mgibson@epsteinglobal.com
Nominating	Committee	Elias Saltz, CSI, CCS, LEED AP	Elias@ArchiTechspec.com
Nominating	Committee	Jeremy T. Olsen, CSI, CCS, CCCA, AIA, LEED AP	Jeremy@daylightstudioarch.com
Nominating	Committee	Kurt Moehlmann, CSI, CDT	rpikurt@aol.com
Partners & Sponsorship	Chair	Drew Clausen, CSI	drew.clausen@owenscorning.com
Partners & Sponsorship	Committee	Scott Conwell, CSI, CDT, FAIA	sconwell@imiweb.org
Partners & Sponsorship	Committee	Peter W. Grotenhuis, CSI, CDT	peter@sjmallein.com
Programs	Chair	Timothy Blatner, CSI, LEED AP	tblatner@fitzgeraldassociates.net
Programs	Committee	Robert Moretti, MBA, CSI, CDT	rmoretti@tremcoinc.com
Programs	Committee	Andrea Baird, CSI, CCCA, AIA, P.E., LEED AP	albaird@rrj.com

**Committee members continued on the next page...**

## Leadership Directory Committee Members (cont.)

Roundtable - Industry	Chair	Scott Conwell, CSI, CDT, FAIA	sconwell@imiweb.org
Roundtable - Industry	Committee	Matthew Nordloh, CSI, CCPR	mattn@integratingproducts.com
Roundtable - Industry	Committee	Robert Moretti, CSI, CDT	rmoretti@tremcoinc.com
Roundtable - Industry	Committee	Chris Carpenter, CSI, CCPR	ccarpenter@pella.com
Roundtable - Meet the Rep	Chair	John Birazzi, CSI, CDT	jbirazzi@kleinandhoffman.com
Roundtable - Meet the Rep	Committee	Pat Ruban, CSI	patruban10@yahoo.com
Roundtable - Meet the Rep	Committee	Kurt Moehlmann, CSI, CDT	rpikurt@aol.com
Roundtable - Specifier	Chair	Melissa Marie Gibson, CSI, CCCA, AIA, LEED AP	mgibson@epsteinglobal.com
Roundtable - Specifier	Committee	James Cross, CSI, CCS, AIA	j.cross@studiogc.com
Roundtable - Specifier	Committee	Randall A. Chapple, CSI, CCS, AIA	rchapple@gpchicago.com
Roundtable - Specifier	Committee	Larry Nordin, CSI, CCS, AIA	larry.nordin@scb.com
Roundtable - Summer Series	Chair	Jeremy T. Olsen, CSI, CCS, CCCA, AIA, LEED AP	Jeremy@daylightstudioarch.com
Roundtable - Technical	Chair	Elias Saltz, CSI, CCS, LEED AP	Elias@ArchiTechspec.com
Roundtable - Technical	Committee	Jeremy T. Olsen, CSI, CCS, CCCA, AIA, LEED AP	Jeremy@daylightstudioarch.com
Roundtable - Technical	Committee	Elaine Fitzgerald, CSI, CCS	elaine Fitzgerald@comcast.net
Roundtable - Technical	Committee	Andrea Baird, CSI, CCCA, AIA, P.E., LEED AP	albaird@rrj.com
Roundtable - Technical	Committee	Robert Moretti, CSI, CDT	rmoretti@tremcoinc.com
Social	Chair	Kristin Henriksen, CSI, CDT	k_henriksen14@yahoo.com
Social	Committee	Kira Rogatnik, CSI, CDT	krogatnik@metlspan.com
Social	Committee	Taylor Neill, CSI	taylorneill@marvin.com
Social - Young Professionals	Committee	Rebecca Greenberg, CSI, CDT	rgreenberg@esadesign.com
Social - Young Professionals	Committee	Noi Phonexayphova, CSI, CDT	sphonexayphova@gmail.com
Social - Young Professionals	Committee	Charles Arko, CSI, CDT	charlesarko@hotmail.com
Social Media	Chair	Holly Hirsch, CSI	Holly.Hirsch@boral.com
Social Media	Committee	Thad Goodman, CSI, CDT	thadg@nationalgypsum.com
Social Media	Committee	Wesley Sherrer, CSI	wesley.sherrer@momentive.com
Social Media	Committee	OPEN	
Student Outreach	Chair	Peter W. Grotenhuis, CSI, CDT	peter@sjmallein.com
Student Outreach	Committee	Scott Conwell, CSI, CDT, FAIA	sconwell@imiweb.org
Student Outreach	Committee	Jeremy T. Olsen, CSI, CCS, CCCA, AIA, LEED AP	Jeremy@daylightstudioarch.com
Technical	Chair	Randall A. Chapple, CSI, CCS, AIA	rchapple@gpchicago.com





## Contributed Articles

### How early project involvement can benefit contractors: Part one

**By: Howard Jancy, CSI, CDT**

On commercial and high-end residential projects, contractors seldom provide input into product selection—a fact that makes little sense. At the time of bidding, materials and processes are already dictated by the project specification, making changes to this document time-consuming and challenging to implement.

Savvy contractors and construction product manufacturers can gain greater project input and secure more work for their companies by becoming involved with design professionals during the early stages of project design.

[Read full article in \*The Construction Specifier\* >>>](#)

### Small brush with fame

**By: Sheldon Wolfe, RA, FCSI, CCS, CCCA, CSC**

One of the most treasured awards I received from CSI is the Ben John Small Memorial Award. First presented in 1996, and limited to one per year, only eleven people have received this award.

The award, originally intended "to honor those who have achieved outstanding stature and proficiency as specifiers," is named after Ben John Small, charter member and president of the Metropolitan New York Chapter.

[Read full article at \*Constructive Thoughts\* >>>](#)

## Bold Visual Effects



### NEW Precision Series wall panels create dramatic shadow lines

Precision Series wall panels provide design flexibility with easy, cost-effective, horizontal or vertical installation. The original Precision Series HWP profile features a 7/8" depth, while the Precision Series Highline profiles are 1-3/8" deep to add visual intensity to a building's exterior. Panels are now available in 8 rib patterns and 33 ENERGY STAR® colors.



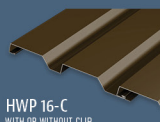
HWP 12-B  
WITH OR WITHOUT CLIP



HWP 12-S  
WITH OR WITHOUT CLIP



HWP 16-B  
WITH OR WITHOUT CLIP



HWP 16-C  
WITH OR WITHOUT CLIP



HWPC  
BERKSHIRE BLUE - ENERGY STAR

PAC-CLAD.COM  
MD: 1 800 344 1400  
GA: 1 800 272 4482

IL: 1 800 PAC CLAD  
TX: 1 800 441 8661  
MN: 1 877 571 20

[PACGREENINFO.COM](#)  
YOUR GREEN METAL RESOURCE



## The Closeout Master Bathroom Renovation

Submitted by: Stuart Berger, AIA, CSI, CCS | studioB design LLC

Partners Sheila Gutrich and Stuart Berger, AIA, CSI, CCS, have created a niche bathroom-on-a-budget concept for several of their North Shore clients, most who live in 100-year old houses. The program for the depicted project was a total demolition and renovation of an existing master bathroom for under \$25k. The clients spoke about a space with an eclectic feel compatible with their saltbox colonial interior plus the transition features required for a modern bathroom. Key items included a steam shower, a free-standing soaking tub, and improved ambient and task lighting.

Seizing the opportunity offered by the double windows to create an ambient light-filled space we added a window seat that offers a cozy atmosphere above flexible storage. The predominant color scheme is white with aqueous accent colors. Angling the tub provided the illusion of a deeper space while the glass shower enclosure floats above the marble floor. Task lighting was enhanced with LED luminaires.

Sheila brings the clients' dreams into design inspiration through the colors, textures, fixtures creating spaces that have a luxury beyond the budget. Stuart handles the technical design, the construction with a small team of master craftsmen and installs the tile himself.

We send our thanks to Custom Building Products for the cements, grouts, and sealants used in all our projects.



Photo Credit: studioB design

[Sign up to showcase your project in \*The Closeout\* >>>](#)