

# CHANGE ORDER

CONSTRUCTION SPECIFICATIONS INSTITUTE CHICAGO CHAPTER

**M2M Tools  
Help  
Members  
Stay  
Connected**

See page 7 to learn more.

2020  
*April*

## CSI Chicago FY2021 Officers & Directors Election

Cast Your Vote Through April 14, 2020.

See page 3.

FROM THE PRESIDENT	2
CHAPTER ELECTION	3
MEMBER CONNECTION	4-5
CHAPTER EVENTS	6
CHAPTER QUICK READS	7
CHAPTER ARTICLES	8-11
CSI BEYOND THE CHAPTER	12
INDUSTRY EVENTS	13



### *Upcoming Chapter Events*

- 4/21** Online Annual Meeting
- 5/20** Awards & Recognition Night - *POSTPONED*
- 6/04** Summer Games On The Waterfront - *CANCELED*

### *Included Articles*

- 8** 2020 Student Scholarship Recipients Announced
- 9** 2020 CSI2eye Event: A Day Of Building Relationships Through Knowledge Sharing
- 10** CSI's Top Ten Tips On Working From Home

## LEADERSHIP TEAM 2019-20

### PRESIDENT

Andrea Baird  
CSI, CCCA, CDT

### PRESIDENT-ELECT

Brad Schwab  
CSI, CDT

### VICE PRESIDENT

Jennifer Friedland  
CSI, CDT, LEED GA

### VICE PRESIDENT

Scott Conwell  
FCSI, CDT

### SECRETARY

Chris Carpenter  
CSI, CCPR, CDT

### TREASURER

Elias Saltz  
CSI, CCS, CDT

### MEMBERSHIP OFFICER

Robert Moretti  
CSI, CDT

### DIRECTORS

Guadalupe Casimiro  
CSI, CDT

Randall Chapple  
CSI, CSS, CDT

Paul Fogarty  
CSI, CDT

Rachel Nava  
CSI, CDT

Jeremy Olsen  
CSI, CCS, CCCA, CDT

Heather Rice  
CSI, CDT

### IMMEDIATE PAST PRESIDENT

Peter Grotenhuis  
CSI, CDT

### DIRECTOR - NCR

Drew Clausen  
CSI

### EXECUTIVE DIRECTOR

Beth Winkler



## Let's Stay Connected

### Andrea Baird

NCARB, P.E., BECxP, CxA+BE, CCCA, LEED AP BD+C

Friends, I hope that during this time of uncertainty and disruption you are also able to find opportunities, whether it be spending more quality time with family, catching up on professional development goals, or maybe even adjusting your career path. As an organization we are working to continue to provide you with value for your membership through remote continuing education opportunities and, perhaps more importantly, giving you the tools to stay connected as a community via our [M2M Connection Tools](#). We have invested in software to allow for webinars and video conferencing for future use.

I would also like to remind you that your membership is individual. and not tied to your company. If your job situation changes, your membership continues with you until expiration. We encourage you to keep your [membership profile](#) updated while continuing to take advantage of your membership benefits. Please participate in our elections via email and consider attending our annual meeting, which will be held via video conference.

Be well and I look forward to seeing you in person when this season passes.

**M2M** CONNECTION  
Built By Members For Members



Submit content for the Change Order Newsletter using our M2M Connection Tool Box.

CLICK TO VIEW OUR LEADERS



## FY2021 Officers & Directors Election

### Online Election

The CSI Chicago chapter fiscal year 2021 (FY2021) election for Officers & Directors is taking place via online ballots and is open until Tuesday, April 14, 2020 at 5:00pm.

Please cast your vote by 4/14/20 using the ballot link emailed to members in good standing on March 31.

If you did not receive an online ballot email or have misplaced the email, please reach out to Beth Winkler at [administration@csichicago.org](mailto:administration@csichicago.org) to request a new link.

Thank you in advance for taking part in this important part of chapter business.

### Election Slate for CSI Chicago Fiscal Year 2021 July 1, 2020- June 30, 2021

Position - Member Name	Term Ending
President-elect - Jennifer Friedland, CSI, CDT	June 30, 2021
Vice President - Guadalupe Casimiro, CSI	June 30, 2022
Secretary - Paul Fogarty, CSI, CDT	June 30, 2021
Membership Officer - Heather Rice CSI, CDT	June 30, 2021
Director - Heidi Cervantes, CSI	June 30, 2022
Director - Melissa Gibson CSI, CCS, CCCA, CDT	June 30, 2022
Director - Heather Salisbury, CSI	June 30, 2022
Director - Chris Walsh, CSI, CDT	June 30, 2021
NCR Director - Jennifer Friedland, CSI, CDT	June 30, 2021

### Officers Continuing Or Assuming New Roles for FY2020 With Terms Ending June 30, 2021

Position - Member Name	Term Ending
President - Brad Schwab, CSI, CDT	June 30, 2021
Vice President - Scott Conwell, FCSI, CDT	June 30, 2021
Treasurer - Elias Saltz, CSI, CCS, CDT	June 30, 2021
Director - Rachel Nava, CSI, CDT	June 30, 2021
Director - Jeremy Olsen, CSI, CCS, CCCA, CDT	June 30, 2021
Immediate Past President - Andrea Baird, CSI, CCCA, CDT	June 30, 2021



**MAPEI's warranted waterproofing solutions for balconies**

**Issues:**  
Weather, salts, efflorescence

**Solutions:**  
Freeze/thaw- and submersion-resistant mortars, efflorescence-resistant grouts, expansion joints and a Mapethene waterproofing system

- Concrete
- Mapebond™ 700, Mapebond 710 or Mapebond 720 adhesive
- Mapethene™ HT or Mapethene LT sheet waterproofing
- Mapedrain™ 30, Mapedrain 35 or Mapedrain 50 drainage composite
- Modified Mortar Bed
- Mapelastic™ 315 (with Fiberglass Mesh) or Mapelastic AquaDefense waterproofing membrane
- Kerabond™ T / Keralastic®, Kerabond / Keralastic™ or Granirapid™ mortar system
- Ceramic or stone tile
- Ultracolor™ Plus FA or MAPEI Flexcolor™ CQ grout
- Mapesil™ T 100%-silicone sealant
- UltraCare™ Penetrating Plus Stone, Tile & Grout Sealer penetrating sealer

Balconies can be challenging environments for tile or stone installations – whether over occupied or unoccupied space.

MAPEI offers waterproofing systems solutions from the substrate up. Best of all, these solutions qualify for MAPEI's Best-Backed® system warranty, giving architects peace of mind when specifying MAPEI products.

For more information, visit [www.mapei.com](http://www.mapei.com) or call 1-800-992-6273.

**MAPEI**  
ADVANCED SEALANTS • CHEMICAL PRODUCTS FOR BUILDING

MAPEI USA



**Layered Texture**

An entry canopy fabricated from perforated aluminum PAC-CLAD 7.2 panels appears to continue into the building, creating a signature ceiling element. "It really brings that texture and layering into the building – it blends the interior and exterior space."

-Stacia Ledesma, Designer, SmithGroup

Eloy City Hall, Eloy, AZ  
Architect: SmithGroup  
Photographer: alanblakely.com

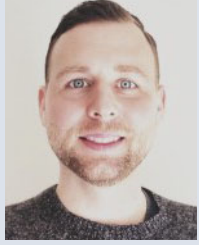
Installing contractor: Progressive Roofing  
General contractor: CORE Construction

**7.2 Panel perforated**  
Aged copper finish

**PAC-CLAD**  
PETERSEN  
A CARLISLE COMPANY

Case study @ [PAC-CLAD.COM/ELOY](http://PAC-CLAD.COM/ELOY)

PAC-CLAD.COM | INFO@PAC-CLAD.COM | 800 PAC CLAD



## Member Spotlight

**Bill Long, CSI**

Bill Long's professional career started in 2007 when he co-founded the residential home remodeling company, Colorful Remedies. Since then, he has continued his career in the paint and coatings industry working with paint manufactures, general contractors, architects and designers. Bill's current role as Architect & Design Manager with PPG allows him to combine all the skills he has learned over the course of his career to add value to his customers on a daily basis.

The Foxconn Project in Wisconsin has been Bill's most memorable strictly because of the size of the project. Being a \$10 billion dollar project, there were a variety of components, including; legal agreements, surfaces to consider, product submittals, and the overall interaction of painting contractors, general contractors, architect, and design teams.

Bill says that by far, the biggest benefit of his CSI Chicago membership is the knowledge he has gained from the local events and the opportunity CSI has given him to network with like minded people in the industry. There are legitimate relationships being built daily and these relationships have CSI at the core. Bill remarks that he is looking forward to being more engaged with CSI Chicago in 2020 through committee involvement.

Bill was originally from Philadelphia, PA and enjoys playing basketball and soccer but says he has recently learned how not push himself beyond my age. His full name, William Wallace Long IV, is turning into a legacy with his son following as the 5th generation name sake.

Bill believes that people will always be at the heart of relationship building and says that, in this day and age, it is up to us to continue to emphasize human interaction and never lose sight of its importance.



## Member Spotlight

**Julianna Kovacs, CSI**

Julianna Kovacs graduated from Illinois Institute of Technology in 2008 with a B.S. in Engineering Management, specializing in Materials Science and Engineering. She began her career as a sales engineer focusing on software for Computational Fluid Dynamics (CFD). After she helped setup a distributor in Brazil, the private company, which developed of the CFD application, grew significantly and was acquired by a large public company, Mentor Graphics. Her experience collaborating with teams and cultures across the globe continue to shape her career.

Julianna's favorite project so far has been working on a new sports stadium and meeting each week at the GC's office for BIM Coordination meetings. Seeing the nearly completed project come to life has shown that the BIM work she does, Clash Detection, and hours spent discussing changes really works!

Julianna shares that she is very excited to have joined CSI Chicago as an emerging professional, to have an opportunity to learn more about the Industry and its challenges. Her intent is to stay ahead of industry trends so she can understand her clients better and provide the best experience on their projects.

In her free time, Julianna loves to play tennis and spend time with her dog, an Australian Shepherd. She is also proud to be a bi-racial Hungarian/African American and encourages everyone to "Be yourself, if you are creative - take a chance and show your company what you like to do!"

### We Want To Spotlight You Next

Visit our [M2M Connection Hub](#) to fill out a Member Spotlight Form. Answer a few questions about yourself and you will be spotlighted in an upcoming issue of this newsletter.

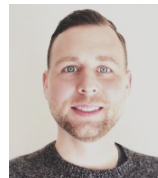
## New Chapter Members

**Patrick Murphy, CSI-EP**  
*Stego Industries*

**David Wojcik, CSI, CDT**  
*Wojcik + Associates Architects, Inc.*

**Kelly Van Eaton, CSI, AIA, NCARB**  
*Epstein*

## Members On The Move



**Bill Long, CSI** with PPG recently changed roles from General Contractor Representative to Architect & Design Manager.

Please [click here](#) and fill out the Members On The Move Form to share your personal or professional news/achievements.



## Project Showcase

Shared by: Antunovich Associates

Antunovich Associates collaborated with Belmont Village to design Belmont Village Senior Living, located in the famed Lincoln Park neighborhood of Chicago. This 120,500 SF facility is part of the Lincoln Common. It features 149 units made up of studios, one-bedroom, and two-bedroom residences that serve both assisted living and dementia levels of care. The structure has two levels of below-grade parking and seven stories above grade.

The exterior of the new structure is designed to resemble the historic Nellie Black building that previously resided on the site. Internally, communal spaces play a significant role in the design, allowing residents to partake in daily activities and collaborate in shared environments. These public spaces include a café, great room, fitness space, a multi-purpose screening area, library, an internal courtyard, and outdoor terraces. Belmont Village provides a high-end, intimate residential setting that meets all the needs of its residents. Its function required Antunovich Associates to navigate multiple national, state, and local building and health codes, as well as USGBC's LEED program, under which the project is slated for Silver certification.

Awards: 2019 Excellence in Masonry Award - Best of Brick and Best of Health Care/Scientific Research, 2019 Argentum Senior Living by Design Award



Photos by Dave Burk, courtesy of Antunovich Associates

## Membership Milestones

### 10 Years

**David O'Bryan Jr., CSI, CDT**  
*Rust-Oleum Corporation*

### 15 Years

**David Meyers, CSI, CCPR, CDT, LEED AP**

**Joakim Backstrom, CSI**  
*AltusWorks*

### 30+ Years

**Elliott Dudnik (33 years)**  
PhD, CSI, AIA, FAIA, LEED AP, NCARB  
*Elliott Dudnik & Associates*

**James Lucas, CSI (50 years)**  
*J.N. Lucas & Associates*

*Thank you to all of our members who are celebrating an anniversary with CSI Chicago this month.*

## Share Your Firm's Project

If you were on a team that just completed a project, [click here](#) and fill out a form.

**Jeff M. Diqui**  
*Director, Industry Development  
and Technical Services*

Office: 630-396-7141  
Cell: 630-606-8220  
[jdiqui@imiweb.org](mailto:jdiqui@imiweb.org)

2140 W. Corporate Drive  
Addison, IL 60101



**INTERNATIONAL  
MASONRY  
INSTITUTE**  
[www.imiweb.org](http://www.imiweb.org)

## Online Chapter Annual Meeting

Tuesday, April 21, 1:00pm - 2:00pm

Presented by: Andrea Baird, CSI, CCCA, CDT | President

The annual meeting provides chapter members an opportunity to learn more about what is happening within the chapter. Attendees will be informed on FY2021 election results, current events, committees, the chapter's financial state, and more. There will also be an opportunity for questions from chapter members.

This event will be held online for chapter members only via Zoom Meeting. Chapter members that are registered to attend will be sent a link via email to join approximately 24 hours before the event.

### REGISTRATION

## Update On In-Person Events

As we continue to navigate this unprecedented time, CSI Chicago Officers and Directors have made the decision to not hold any in-person meetings or events through June 30, 2020.

In the meantime, we are working on more ways for our members to connect and engage online and will announce those via email as they are finalized and registration opens.

As the health and safety of all CSI Chicago members and guests is of the utmost importance, our leadership will be monitoring the situation in Chicago and will resume in-person meetings when it is determined safe to do so.

## Rebuilding Together Postpones Rebuilding Day

Rebuilding Together Metro Chicago announced that due to the current health crisis, it has made the decision to postpone the April 25 home rebuild day until further notice ([Read statement here](#)). As planning resumes, we will be sure to notify members of donation and volunteer needs.

## Awards & Recognition Night Postponed

In the interest of health and safety of members and their guests, the May 20 Awards & Recognition Night has been postponed until later in 2020. We will notify all members of the new date once it is established.

## Summer Games on the Waterfront Canceled

As we are unsure when normal business operations will resume in Chicago, what work challenges members will be facing when things do resume, and the need to start planning our next fiscal year activities, the leadership has made the difficult decision to cancel the June 5 social sports event.

## CSI Chicago Platinum Partners

**3M** Science.  
Applied to Life.™

**Senergy®**

**BEHR**

**BLUE LINE**  
BUILDING ★ PRODUCTS

**CON  
SPEC  
TUS**

**CUSTOM®**  
TILE INSTALLATION SYSTEMS

**MAPEI®**

**RENOVATION**  
by MAXXON®

**DUPONT®**  
**Tyvek.**  
Parksite

**Pella**  
COMMERCIAL

**PAC-CLAD**  
PETERSEN  
A CORLENE COMPANY

**BUILDING TRUST**

**Sika®**

**SMARTci**  
SMARTER BY DESIGN. PROVEN BY PERFORMANCE.

[Click here](#) to contact a local representative.

## M2M Tools Help Members Stay Connected

### Utilize CSI Chicago Discussion Board

The need to stay connected remotely with the local AEC community is greater than ever right now. Our discussion board offers CSI Chicago members an opportunity to share or gain knowledge on different construction related topics with your fellow chapter members. Whether it's a question about a project, product, CSI Chicago, or just a conversation about managing remote work please post it to our discussion board today. (CSI log in required.)



**START A CONVERSATION**

### Share Your News & Achievements

Now more than ever, people are trying to find ways to stay connected. Share news/achievements with fellow members so we can celebrate together. If you recently celebrated an achievement like switching jobs/titles or earned a certification, we want to know about it. Please share your news by submitting the members on the move form today.



**SHARE YOUR NEWS**

### Tell The Membership About You

We are looking for members to spotlight. Whether you are a rookie or a veteran member, we want to turn the spotlight on you so your fellow members get to know you better. Fill out the spotlight form and we will



**SUBMIT YOUR INFO**

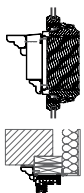
### Recommend A Helpful Article

Share an article that you found helpful and thought provoking or wrote with your fellow members. Please share your article by submitting the article recommendation form today.



**ARTICLE RECOMMENDATION**

### THE BOYS & GIRLS CLUB OF HARLEM



### Preserving the past, building the future.

As Public School 186 in Harlem, New York, eclipsed 30 years of abandonment, its iconic architecture was in serious jeopardy. Dattner Architects and the Pella Architectural Solutions team worked together to bring new life to the building with custom solutions for complicated needs. Using old photos and architectural remnants found inside, Pella preserved the historical accuracy while adding modern innovations and durability.

FROM REMNANTS TO RESTORATION.

PELLA WINDOWS & DOORS  
27545 Diehl Road, Suite 100  
Warrenville, IL 60555

Chris Carpenter, CSI, CCPR, CDT  
630.675.4750 · ccarpenter@pella.com  
pella.com/architectural-solutions



COMMERCIAL

## BLUE LINE BUILDING ★ PRODUCTS

Independent Manufacturers Rep

"The Right Product for the Right Application"

**Morin®**

A Kingspan Group Company

**FUNDERMAX®**

for people  
who create



[www.Blueinebp.com](http://www.Blueinebp.com)

**Matt Martino**  
773.251.0066

[mmartino@blueinebp.com](mailto:mmartino@blueinebp.com)



## 2020 Student Scholarship Recipients Announced

The 2020 Student Scholarship Program was open to all architectural students in the Chicagoland area and continues to aid in building stronger relationships between our chapter and local colleges. The applicants for the scholarship were tasked with creating a text narrative of their design process and how different factors influenced their material choices in regards to the building envelope. This encouraged the students to dig deeper into issues of system design and how those decisions can impact aesthetics as well as building function. They were also required to submit a personal narrative with their submission. Scholarship funding is provided by the [CSI Chicago Foundation](#). Congratulations to our two 2020 Student Scholarship recipients!

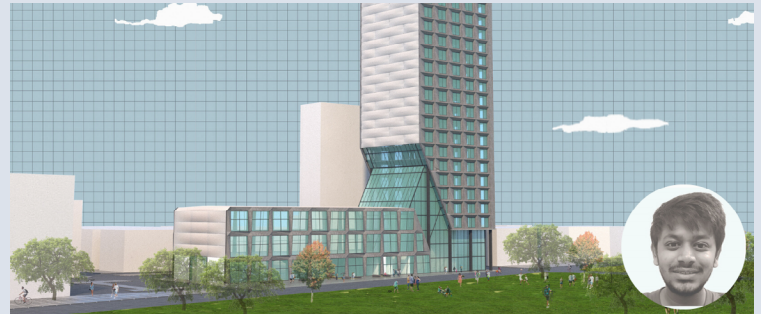
### Amandeep Panach - The Emerald



Amandeep (Aman) Panach's vision for The Emerald has an urban farm and a greenhouse situated upfront and center to raise awareness of the sustainable necessities of having food production to feed a city like Chicago. The community recreation center, outdoor community growing space, and leasable retail space informs the rest of the lower level. She explains that the residences are pushed upward to create a vibrant and inviting courtyard for the community to share and enjoy the amenities. The layout of the project embraces the full extent of the site to activate a leftover piece of land that is currently inaccessible but has the potential of becoming a hub for west town.

Aman graduated with honors in 2018 from the University of Washington with a BA in Architectural Design and then worked at Best Practice Architecture in Seattle for fourteen months before pursuing a Masters of Architecture at the Illinois Institute of Technology. She is proud to be an Indian American, female, and first generation college student. Her journey has been full of diverse exposure to architecture which developed my unique design perspective. Aman's interest in Architecture began after discussing the design of her house remodel with her Grandfather. Seeing the ideas come to life and completely transform the space she grew up in had helped set her path in Architecture. After experiencing the personal impact the renovation had, she learned that design has a profound effect on the everyday lives of individuals and communities. After she finishes her master degree, Aman hopes to work in a Chicago based Architecture firm that focuses on creating sustainable and community based projects and one day aspires to open her own practice.

### Chintan Shah - The Garden Of Souls



Chantan Shah's The Garden Of Souls is an institution that caters to supportive housing for diverse groups of people who are either homeless or facing gender identity issues; who needs to be empowered. Keeping the nature of this premise in mind, the institution offers a change, a rejuvenation for betterment of such individuals. The goal of the institution is to 'open the doors' metaphorically; for individuals who are facing such crises; by it's programs and the idea of self-empowerment, which gives them identity, individuality and capability to sustain in the diversity. The project manifests these concerns and tries to create a balanced atmosphere of social exchange of ideas, programs and learning spaces for individuals. It aims to reach out to such individuals by offering programs in a series of stages according to the improvement factor of the particular individual.

For Chintan, pursuing his Masters in Architecture at Illinois Institute of Technology seems to be a dream come true scenario. His mother, being a single parent never stopped encouraging from following his passion, despite of several economic hardships throughout the journey. He says she ensured to give him the highest quality of education and has always encouraged him to participate in various curricular activities since childhood. Residing in a 'Jain' minority community in India did not helped me towards gaining benefits of government subsidy schemes in academic tuition - but that did not bind me from climbing higher stairs. Chintan decided to pursue Architecture due to sheer interest in forms and geometry. The undergraduate course at KRVA helped me gain a deep and varied insight into different discourses of architecture design and practice. Further, working in the field for 3.5 years helped me gain enormous professional experience in the varied field of architecture. Chintan looks forward to develop and enrich himself with expertise in the field of Architecture and continue his journey onwards.

## 2020 CSi2eye Event: A Day Of Building Relationships Through Knowledge Sharing

Written by: Brad Schwab, CSI, CDT

Over 70 design, construction and manufacturer professionals came together on Thursday, March 12 to share their knowledge with one another on new product and system solutions in the areas of low slope roofing, insulation, metal composites, concrete repair, windows and doors, security solutions, architectural lighting, rainscreen systems, moisture management and more.

Design and construction professionals met one-on-one for 20 minutes throughout the day with technical manufacturer reps to ask questions, get answers, learn something new and develop relationships to help on existing and future projects.

Participating manufactures included ALPOLIC, ARDEX Americas, Assured Corporation, Atlas Roofing Corporation, BASF - Master Builders Solutions, dormakaba USA Inc., FiberTite Roofing Systems, Firestone Building Products, Focal Point, Imola Tecnica, INTUS Windows, Maxxon Corporation, OMG Roofing Products, OWA USA Corporation, ParexUSA, Siplast, Technoform, Tremco Construction Products Group, Tudelu Holdings, Vitro Architectural Glass, and York Flashings.

Participating design and construction companies included ABI Specifications Consulting, A. Epstein and Sons International Inc., Adrian Smith + Gordon Gill Architecture LLP, Antunovich Associates Architects, ArchiTech Consulting, Inc., Booth Hansen, CannonDesign, Conspectus, Inc., Daylight Studio LLC, FitzGerald Associates Architects, Goettsch Partners, Gresham Smith, HDR, Inc., Jensen & Halstead Ltd., Lamar Johnson Collaborative, Linden Group Inc, NORR, Pepper Construction Company, Perkins and Will, Power Construction Company, Skender, Valerio Dewalt Train, and Walsh Construction.

As an added bonus the participants enjoyed the lunch time presentation Public Building Commission Chicago – A Wider Lens which was presented by Kerl LaJeune, Deputy Director of Planning and Design of the Public Building Commission of Chicago.



Thank you to the 7thth annual CSi2eye event committee, participants and Kerl LaJeune who helped make this year's event a success. We look forward to continuing to build relationships through knowledge sharing next year and years to come. [See more photos from our 2020 CSi2eye Event.](#)

If you are interested in being involved in our 2021 CSi2eye either as a design and construction professional or a manufacturer participant please visit our [2021 CSi2eye web page.](#)



### 2020 Manufacturer Lineup

**ALPOLIC**  
METAL COMPOSITE MATERIALS

**ARDEX**  
AMERICAS

**ASSURED**  
CORPORATION

**ATLAS**

**EnergyShield**  
Continuous Wall Insulation

**BASF**  
the BASF Chemical Company

**MASTER BUILDERS SOLUTIONS**

**dormakaba**

**Fiberlite**  
Seaman Corporation

**Firestone**  
Firestone Building Products

**FOCAL POINT**  
Bringing It All To Light™

**IMOLA**  
TECNICA

**INTUS**  
WINDOWS

**MAXXON**  
CORPORATION

**OMG**  
ROOFING PRODUCTS

**OWA**

**PAREXUSA**

**siplast**

**TECHNOFORM**

**TREMCO**  
Commercial Sealants & Waterproofing  
dryvit

**Tudelü.**

**VITRO**  
Architectural Glass

**YORK**  
Flashings



## CSI's Top Ten Tips On Working From Home

Written by CSI Editorial Staff; Reprinted from [www.csiresources.com](http://www.csiresources.com)



Recommended by: Paul Fogarty, CSI, CDT

COVID-19 has had an immediate impact on how all of us live and work. As we adjust to new standards for ensuring our own health, as well as the health of our personal and professional community, working virtually, or "Working from Home" (WFH), has become a critical element for maximizing our business opportunities while minimizing our exposure risk.

Did you know that approximately half of CSI's staff are dispersed throughout the country and work virtually every day? Yep! Many of us are used remote work.

For those professionals who are new to WFH, or even those experienced pros who may be adjusting to all the new faces showing up in their video feeds, we wanted to provide our Top 10 Tips for WFH success.

Enjoy, and take care of yourself!

### 1. Set a schedule

- Begin and end your day at a specific time - much like you would a regular office schedule.
- Establish a morning routine. Take a shower and get dressed, go for a walk or drive as your "commute." Don't

work in your pajamas!

- Take normal breaks (including lunch). Without office interruptions, WFH can lead to working nonstop. It's easy to get in the zone and not move for 8-10 hours, so keep your energy high with mini-breaks to mimic office breaks.
- End your day. When you leave your "office" be 100 percent at home, many people don't realize how much harder it is to leave work when you WFH.

### 2. Create your "office"

- As much as you are able during this time, find a dedicated workspace. That space is not your couch and TVs are not part of your office.

### 3. Video is important. Save yourself time!

- 93 percent of communication is non-verbal. Using video lets you see your colleagues in real-time, while creating more of a community environment.
- Use video for regular and pop-up meetings
- It allows you to be more effective and creates quicker opportunities for collaboration because you see body language and facial expressions.

If your organization doesn't already offer a platform, there are a variety of tools including Zoom, Google Meet, Whereby, GoToMeeting you can easily implement.

*Article continued on the next page.*

**RENOVATION**  
by MAXXON®

**JUST CLEAN,  
PRIME & POUR**

**YOUR GO-TO SELF-LEVELER**

**LEVEL EZ®**

800-238-8461  
Maxxon.com/123EZ

**BASF**  
We create chemistry

**Senergy®**

**Durable, Code-Compliant Wall Systems  
with Unlimited Design Flexibility**

**Introducing Insulated Masonry Veneer Systems**

Fully-integrated exterior cladding systems with a continuous air and water-resistive barrier and insulation for superior performance. Insulated Masonry Veneer Systems feature BASF MaxGrip Veneer Mortar, a high-strength, specially-formulated setting bed mortar used to adhere natural and manufactured stone, tile, and thin brick veneer.

Learn more at [www.senergy.basf.com](http://www.senergy.basf.com) or contact your local BASF representative, David Meyers at [david.meyers@basf.com](mailto:david.meyers@basf.com) or 630-423-1980.

© 2019 BASF Corporation. All rights reserved.



## CSI's Top Ten Tips On Working From Home

(Continued from previous page)

### 4. Stay engaged during meetings

- Avoid multi-tasking during the meeting. Not only is it rude, it doesn't facilitate effective meetings.
- Arrive early if you want to provide some time for socialization/free flowing conversation prior to the meeting.

### 5. Set rules of the road for communication with your teams.

A few examples:

- If a project or issue takes more than three e-mails, pick up the phone or schedule a video chat to speak personally.
- Use chat for conversations that require minimal back and forth. Call for in-depth conversations (it is quicker in the end).
- Calling someone without a meeting is akin to "dropping by" an office. Sometimes that person is available and sometimes not. They will answer if they can.

### 6. Communicate to connect

- Be purposeful to create virtual water cooler talk.
- Use your webcam and video conferencing.
- Reach out to co-works via phone or video when feeling you need to interact, not just email/chat.

### 7. Communicate what you expect your availability will be with supervisors and your team members

- Update your calendar to reflect your availability, and let your team know in advance when you expect to be out.

### 8. When time permits, be sure and check in with your colleagues regarding their health and their family's health

- These are trying times, and we all need to see where and when we can support each other, and to also be willing to let others know when we need extra support.
- The CSI Community is this association's greatest strength. Our ability to rely on each other, and be there for each other, is essential to all of us.

### 9. Use project management and team communication software to interact with your colleagues and employees in real time

- At CSI, we use the Microsoft Office products to do this – Skype primarily
- Other options exist, such as Slack, Mondays.com, Basecamp, etc..

### 10. Enjoy it! Working remotely can be a wonderful experience. And right now, it can also be critical to your health.

Want to share your own examples of how to make WFH a success? Go to the [CSI-Connect Community](#) and let everyone know how you make Working From Home work.



Creating Value.  
Reducing Risk.  
Where Design and Construction Meet.

**CONSPETUS**

*A Full Suite of Industry-Leading Capabilities:*

- Systems and Performance Documentation
- Construction Specifications
- Risk & Quality Advisory

Conspectus, Inc.  
Elias Saltz, CSI, CCS  
Chicago, IL  
609 628 2390  
[esaltz@conspectusinc.com](mailto:esaltz@conspectusinc.com)  
[www.conspectusinc.com](http://www.conspectusinc.com)



**CustomTECH**  
FLOORING PREPARATION SYSTEMS

## Durable Floor Covering Solutions



Patching   Primers   Moisture Control   Levelers

**Under Carpet, Wood, Vinyl, Laminate and Ceramic Tile**

**CustomTechFlooring.com**  
Howard Jancy, CSI, CDT | Commercial Architectural Services  
[Howard.Jancy@cbpmail.net](mailto:Howard.Jancy@cbpmail.net) | 312-515-9215

A DIVISION OF  
**CUSTOM**  
A QUIKRETE® COMPANY

## CSI Exams and COVID-19

News From CSI National



Every day seems to be a new normal and fresh questions about “what’s next” when it comes to COVID 19.

Here’s the latest for those of you who have been working hard to take a CSI exam or are considering taking an exam:

- As of today, the Spring [CDT](#)®, [CCS](#)™, and [CCCA](#)™ exams are still moving forward.
- Early Bird Exam Pricing is extended to April 30 — [registration information is here.](#)
- Online resources are available to meet you at your time and place of need
- Practice guides in the [CSI Bookstore](#)
- Online study groups
- Free [CDT](#), [CCS](#), or [CCCA](#) candidate handbooks.

Your association is here to support CSI members and the AEC community as we all adapt to balance personal and professional goals and achievement during rapidly changing times.

**GET CERTIFIED - REGISTER TODAY**

## CSI Chicago Gold Partners

**ArchiTech**  
CONSULTING, INC.



[Click here](#) to contact a local representative.

## Talk Business with BPMs

### One-on-One at MSR

Event From CSI National



#### Specifiers: Application Deadline Extended to April 15.

100% of specifiers reported an intent to follow-up with product reps after the event. Attending MSR is time well spent!

[Apply now](#) to attend the Master Specifiers Retreat July 22-24 in Palm Beach, Florida.

#### COVID-19 and MSR

Decisions regarding upcoming events like the Master Specifiers Retreat in July will be addressed as we get closer to these events, and will be based upon published information from health authorities and organizers.

**The deadline for specifier applications is April 15.**

**SPECIFIERS: APPLY FOR MSR**

## NCR Conference Cancelled

News From CSI NCR

Due to the uncertainty surrounding the COVID-19 outbreak and the unknown duration of the measures and recommendations currently in place regarding social distancing, travel bans, local closures and quarantines, the CSI Flint Hills Chapter of the North Central Region has canceled the 2020 CSI North Central Region Conference. Conference events such as the NCR Annual Meeting, Leadership Training and President-Elect Training will be rescheduled by the NCR Executive Committee, who will be sending additional information regarding those events, including their format, as it becomes available.

If you have registered for the conference and have paid your registration fee via PayPal, or if you have paid exhibitor or sponsorship fees via PayPal, your fees will be refunded by PayPal in full to the credit card that was used for your payment. If you made payment of fees by other means, you will be refunded by check. We hope to have all refunds issued by March 31st.

If you have made hotel and/or travel registrations for the conference, please cancel them immediately to avoid penalties.

**NCR WEBSITE**

## Air Barrier Code Requirements 101

Thursday, April 2, 2020, 2:00 to 3:00 p.m. CDT  
Webinar

CRCA's Building Envelope, Industry Affairs and Technical Committees have been busy on teleconferences building educational content for members. The Building Envelope Committee's work has produced a new webinar, Air Barrier – Code Requirements 101 - this Thursday at 2pm, CDT.

This hour-long webinar will cover the basics of Air Barriers & their code requirements, which will help launch into a series of webinars on Air Barriers & Vapor Retarders. Don't miss this 1st in a series of webinars on many topics from CRCA.

[FULL DETAILS](#)

## International Masonry Institutes' Expanded Webinar Offerings

Tuesdays in April starting at 12:00 p.m. EST

Since so many of us are practicing social distancing, IMI wanted to provide more opportunities to connect with them online. Through the month of April, IMI hosts a new webinar every Tuesday at noon Eastern Time. We hope you'll join us to hear about the latest in masonry, tile, restoration, job site technology, and more. Where possible, we'll incorporate timely information as it relates to our industry during this pandemic. Take a look at our offerings below and register to attend.

[FULL DETAILS](#)

@AEC**DAILY**

Now over 500

**FREE**

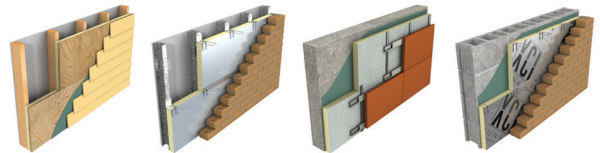
Online Courses

## CSI Chicago Silver Partners



[Click here](#) to contact a local representative.

## Energy Efficient Xci Polyiso



Brad Schwab • 630-772-3516  
bschwab@schwabgroup.net  
www.hunterpanels.com

Renee Doktorczyk, FAIA, CSI, CCS, SCIP  
Renee@ArchiTechSpec.com

**ArchiTech**  
CONSULTING, INC.

800 E. Northwest Hwy, Ste 208  
Mount Prospect, IL 60056-3457  
Tel: 224.345.3450

**Become A Chapter Partner Today**

[Click here](#) to view partnership opportunities.