

# CHANGE ORDER

CONSTRUCTION SPECIFICATIONS INSTITUTE CHICAGO CHAPTER



## A Look Into MIRA

Maintaining Design Integrity  
While Delivering A Custom  
High-Performance Façade

Chapter Meeting  
Tue, March 31, 5:00-8:00pm  
East Bank Club, Chicago  
*See page 5 to learn more.*

2020  
*March*

## Want to get more involved in the chapter?

Raise your virtual hand today  
by using the committee connection tool.  
*See page 7.*

FROM THE PRESIDENT	2
MEMBER CONNECTION	3-4
CHAPTER EVENTS	5-7
CHAPTER QUICK READS	8
CHAPTER ARTICLES	9-11
CSI BEYOND THE CHAPTER	12
INDUSTRY EVENTS	13

## Upcoming Chapter Events

- 3/05** *Specifier Roundtable: Sticky Topics in Sealant Installation: Reports from the Field*
- 3/12** *CSi2eye 2020 (Registration Closed)*
- 3/20** *Industry Roundtable: So You Want To Publish A Book?*
- 3/31** *Annual Meeting & Election*
- 3/31** *Chapter Meeting: A Look Into MIRA - Maintaining Design Integrity While Delivering A Custom High-Performance Façade*
- 4/07** *Technical Roundtable: Building Envelope Tolerances*

## Included Articles

- 9** *150+ Attendees Pack The 2020 Building Enclosure Event*
- 10** *Learning From Owners*



## LEADERSHIP TEAM 2019-20

### PRESIDENT

Andrea Baird  
CSI, CCCA, CDT

### PRESIDENT-ELECT

Brad Schwab  
CSI, CDT

### VICE PRESIDENT

Jennifer Friedland  
CSI, CDT, LEED GA

### VICE PRESIDENT

Scott Conwell  
FCSI, CDT

### SECRETARY

Chris Carpenter  
CSI, CCPR, CDT

### TREASURER

Elias Saltz  
CSI, CCS, CDT

### MEMBERSHIP OFFICER

Robert Moretti  
CSI, CDT

### DIRECTORS

Guadalupe Casimiro  
CSI, CDT

Randall Chapple  
CSI, CSS, CDT

Paul Fogarty  
CSI, CDT

Rachel Nava  
CSI, CDT

Jeremy Olsen  
CSI, CCS, CCCA, CDT

Heather Rice  
CSI, CDT

### IMMEDIATE PAST PRESIDENT

Peter Grotenhuis  
CSI, CDT

### DIRECTOR - NCR

Drew Clausen  
CSI

### EXECUTIVE DIRECTOR

Beth Winkler



## Open Dialogue Keeps Our Industry Moving Forward

Andrea Baird

NCARB, P.E., BECxP, CxA+BE, CCCA, LEED AP BD+C

In a landscape of well-crafted marketing, proprietary claims, and new-to-market products without robust performance history, it is an on-going challenge for designers, specifiers and other decision makers to evaluate the wealth of available materials and systems for our projects. CSI-Chicago does not promote, protect or advocate, for or against, any product, system, or manufacturer. We strive to be a forum for stakeholders across the construction and design community to discuss ideas, emerging topics, and resolutions to challenges in the built environment. The opinions and analysis presented by guest speakers are that of the speaker and not necessarily that of CSI Chicago, and we hope that stimulating and fruitful conversations are borne from each of our programs.

CSI-Chicago always welcomes suggestions for future programming. We have made a convenient feature on our website for submitting recommendations. ([See M2M Tools.](#))

Another feature of our website is the [member discussion board](#) where topics can be discussed. I encourage you to use this feature so we can continue discussion beyond events.

Registration is now open for our [March Chapter Meeting](#). Studio Gang will be sharing their insight on how to maintain design integrity within the constraints of performance, cost, and schedule requirements. Immediately preceding the Chapter Meeting, we will hold our [Annual Meeting](#). All are welcome to attend.

**M2M** CONNECTION  
Built By Members For Members



Submit content for the Change Order Newsletter using our M2M Connection Tool Box.

CLICK TO VIEW OUR LEADERS



## Member Spotlight

**Paul Fogarty, CSI, CDT**

Born and raised in New Orleans, Paul enjoys being involved in the community. He thinks relationships are the backbone of everything New Orleanians do so building personal connections with the people in the industry comes naturally for him.

Paul spent a good deal of his career with a modified bitumen manufacturer where he was able to experience many roles - participating in numerous new product launches and marketing initiatives, developed educational and learning programs, traveled across the United States and Europe. Today, Paul is an Architectural Building Envelope Specialist with SJ Mallein & Associates.

Paul's most memorable project has been the iconic Flatiron Building, which presented a number of staging challenges.

CSI Chicago has been integral in Paul's development in this market. When he moved from NE Ohio, he joined the chapter and says the connections and relationships that he has made have been invaluable.

When Paul isn't answering roofing questions, he is an avid runner. His current goal is to run an average of 10 miles a day for all of 2020! He is also a huge Disneyphile; movies, TV, theme parks - if it's Disney, just get him there! Paul could run to Disneyland in 7 months at this rate!



## Member Spotlight

**Catie Truong, CSI**

Catie is a Project Architect at Level Architecture, and is involved in a variety of projects both local and across the country. Before obtaining her license, Catie wanted to gain experience in other interrelated aspects of the industry which led her to work in Construction and Development. After moving to Chicago, Catie worked for SCB and Booth Hansen worked on projects ranging from single family, to high-end multi family, to aviation projects.

It's true you never forget your first - Catie shares that her most memorable project was her first, which was a new high school located just outside of Cincinnati, Ohio. She reflects that there was nothing particularly special about the school itself but says the experience that she gained from it was invaluable. For this project, she took the architect "hat" off and put the hardhat on and says she will never forget the valuable insight she learned in the field during this project. Catie feels that you can never know too much and you will also never know enough. This project definitely helped her fill up that knowledge bucket.

Catie joined CSI recently because of her interest in all facets of the industry. She thinks that CSI opens the door to a wealth of products and standards that are critical to the success of any construction project.

When she is not conquering buildings, Catie is an amateur cartoon artist. She is also a Colorado Native - Born & raised, and has 9 siblings.

## Membership Members

### 5 Years

**Francisco Rosas**  
CSI

*Jensen & Halstead*

### 25 Years

**James Kreps**

CSI, CCCA, CDT, AIA, LEED AP, NCARB, USGBC  
*Brookfield Properties Retail*

### 30+ Years

**Thomas Engstrand (33 yrs)**

CSI, CCS, CDT, AIA, LEED AP, NCARB  
*Skidmore Owings and Merrill*

**Charles Hart (33 yrs)**

CSI, CDT

### 30+ Years (cont.)

**Alan Itzkowitz (33 yrs)**

FCSI, CCS, CCCA, CDT, AIA, ALA, LEED AP, SCIP  
*ABI Specifications Consulting*

**Dennis McNeil (52 yrs)**

CSI, Member Emeritus, CDT

**Bruce Schmiedl (41 yrs)**

CSI, AIA  
*College of DuPage*

**Ronald Spellich (32 yrs)**

PE, CSI, CDT  
*Klein and Hoffman*

**Joseph Stypka (35 yrs)**

FCSI, CCS, CDT, AIA, FAIA  
*Perkins and Will*

*Thank you to all of our members who are celebrating an anniversary with CSI Chicago this month.*

*Membership Milestones features members who are celebrating 5 yrs, 10 yrs, 15 yrs, 20 yrs, 25 yrs and 30+ yrs.*



## Project Showcase

Shared by: Level Architecture Incorporated

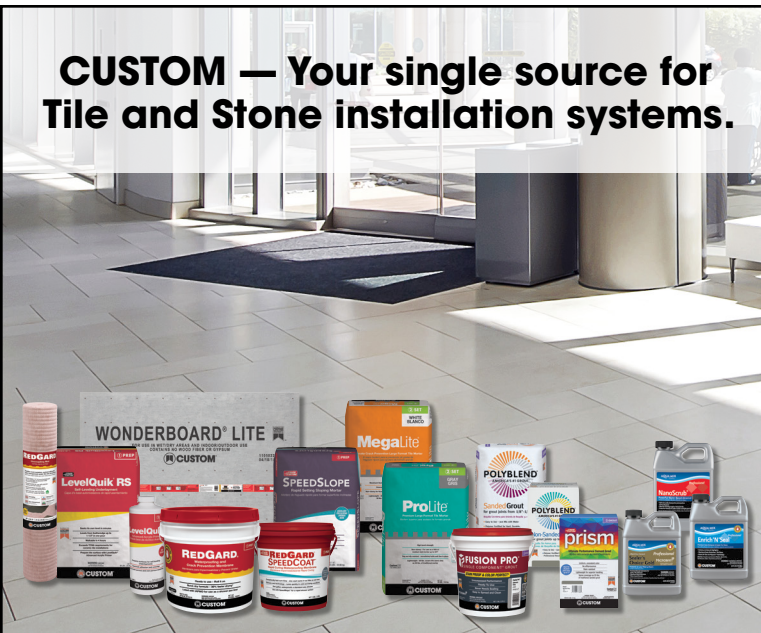
### The Henry Chicago, IL

Designed to attract the young, urban, and design-savvy, this 38-unit apartment building is currently being designed for the corner of Honore and Montrose Avenue, immediately adjacent to the Montrose Avenue Brown Line Station. Using inspiration taken from the iconic “EL” trains and the surrounding neighborhood, the building is clad in various textures of metal and brick as if the building was constructed over time, like a small village. The project consists of one and two-bedroom units averaging 800 square feet, and provides over 5,000 square feet of leasable retail space.



Images courtesy of Level Architecture Incorporated.

## CUSTOM — Your single source for Tile and Stone installation systems.



**CustomBuildingProducts.com**

Howard Jancy, CSI, CDT    Howard.Jancy@cbpmail.net



## New Chapter Members

**Julianna Kovacs, CSI-EP**

**Ronald Kollath, CSI-S**

## Members On The Move



**Scott Wolff, CSI, CDT** started in a newly-created position as Architectural Specialist with W.R. Meadows last month. He shares that this position will allow him to continue supporting his architectural and consultant base.

Please [click here](#) and fill out the Members On The Move Form to share your personal or professional news/achievements.



## A Look Into MIRA - Maintaining Design Integrity While Delivering A Custom High-Performance Façade

### Chapter Meeting

Demand for buildings to be designed for high-performance is increasing. Building enclosures including façade assemblies are rapidly evolving and incorporating new technologies with a multitude of requirements including sustainability goals, increased energy efficiency, acoustic performance, and thermal comfort. In addition to performance requirements, cost and constructability are yet more factors challenging the industry.

Architects must simultaneously incorporate all these external criteria while maintaining the integrity of the architectural design. The key to successfully integrating these objectives into the architecture is understanding design delivery methods, early identification of performance criteria, testing the design, and managing the implementation throughout construction.

The presentation will provide insight into Studio Gang's approach to the conceptual design process, technical criteria and design, mockup testing and design implementation during construction for the Mira Tower project.

[FULL DETAILS & REGISTRATION](#)

[EVENT SPONSORSHIP OPPORTUNITIES](#)

**Date:** Tuesday, March 31, 2020, 5:00-8:00 PM

**Location:** East Bank Club, Chicago

**Cost For Dinner & Program:**

CSI Chicago Members are Complimentary  
Nonmembers \$60

**Registration required by March 24.**



**Harry Soenksen**

**Senior Director, Technical Design | Studio Gang**  
Harry Soenksen responsible for the quality control and technical oversight of each of the Studio's projects. He has extensive experience in the management and design of projects at every scale, meeting the highest sustainability metrics.



**Mauricio Sanchez**

**Director, Technical Design | Studio Gang**  
Mauricio leads design teams for large-scale mixed-use, residential, and tower projects. His skills in drafting, hand drawing, and research inform his approach to design, which involves testing materials toward the creation of new architectural forms.

*[Full bios on event page.](#)*

## CSI Chicago Platinum Partners

**3M** Science.  
Applied to Life.™

**Senergy®**

**BEHR**

**BLUE LINE**  
BUILDING \* PRODUCTS

**CON  
SPEC  
TUS**

**CUSTOM®**  
TILE INSTALLATION SYSTEMS

**MAPEI®**

**RENOVATION**  
by MAXXON®

**DUPONT**  
**Tyvek.**  
Parksite

**Pella**  
COMMERCIAL

**PAC-CLAD**  
PETERSEN  
a CORTESE COMPANY

**BUILDING TRUST**

**Sika®**

**SMARTci**  
SMARTER BY DESIGN. PROVEN BY PERFORMANCE.

[Click here](#) to contact a local representative.

## Chapter Annual Report and Election Membership Meeting

**Presented by: Andrea Baird, CSI, CCCA, CDT**  
**CSI Chicago Chapter President**

The annual report provides an opportunity for chapter members to learn more about what is happening within the chapter. Attendees will be informed on current events, committees, the chapter's financial state, and more. At the conclusion of the report, the proposed election slate as listed to the right will be presented to membership for action.

**Date:** Tuesday, March 31, 2020

**Time:** 4:00-5:00 PM

**Location:** East Bank Club, Chicago

**Registration:** Required by March 24.

### REGISTRATION

Attendees that also plan to attend the [March Chapter Meeting](#) immediately following this event need to register for both events separately.

### Election Slate for CSI Chicago Fiscal Year 2021 July 1, 2020- June 30, 2021

Position - Member Name	Term Ending
President-elect - Jennifer Friedland, CSI, CDT	June 30, 2021
Vice President - Guadalupe Casimiro, CSI	June 30, 2022
Secretary - Paul Fogarty, CSI, CDT	June 30, 2021
Membership Officer - Heather Rice CSI, CDT	June 30, 2021
Director - Heidi Cervantes, CSI	June 30, 2022
Director - Melissa Gibson CSI, CCS, CCCA, CDT	June 30, 2022
Director - Heather Salisbury, CSI	June 30, 2022
Director - Chris Walsh, CSI, CDT	June 30, 2021
NCR Director - Jennifer Friedland, CSI, CDT	June 30, 2021

### Officers Continuing Or Assuming New Roles for FY2020 With Terms Ending June 30, 2021

Position - Member Name	Term Ending
President - Brad Schwab, CSI, CDT	June 30, 2021
Vice President - Scott Conwell, FCSI, CDT	June 30, 2021
Treasurer - Elias Saltz, CSI, CCS, CDT	June 30, 2021
Director - Rachel Nava, CSI, CDT	June 30, 2021
Director - Jeremy Olsen, CSI, CCS, CCCA, CDT	June 30, 2021
Immediate Past President - Andrea Baird, CSI, CCCA, CDT	June 30, 2021



**Issues:**  
Weather, salts, efflorescence

**Solutions:**  
Freeze/thaw- and submersion-resistant mortars, efflorescence-resistant grouts, expansion joints and a Mapethene waterproofing system

Balconies can be challenging environments for tile or stone installations – whether over occupied or unoccupied space.

MAPEI offers waterproofing systems solutions from the substrate up. Best of all, these solutions qualify for MAPEI's Best-Backed® system warranty, giving architects peace of mind when specifying MAPEI products.

For more information, visit [www.mapei.com](http://www.mapei.com) or call 1-800-992-6273.

- Concrete
- Mapebond™ 700, Mapebond 710 or Mapebond 720 adhesive
- Mapethene™ HT or Mapethene LT sheet waterproofing
- Mapedrain™ 30, Mapedrain 35 or Mapedrain 50 drainage composite
- Modified Mortar Bed
- Mapelastic® 315 (with Fiberglass Mesh) or Mapelastic AquaDefense waterproofing membrane
- Kerabond™ T / Kerastatic®, Kerabond / Kerastatic™ or Granirapid® mortar system
- Ceramic or stone tile
- Ultracolor® Plus FA or MAPEI Flexcolor® CO grout
- Mapesil™ T 100%-silicone sealant
- UltraCare™ Penetrating Plus Stone, Tile & Grout Sealer penetrating sealer



PARA Activity Center, MoCalla, AL Installing Contractor: R. B. Atkins & Associates Architect: Ellis Architects  
Distributor: Roofers Mart Photographer: hortonphotoinc.com



PAC-CLAD REVEAL + HWP  
METAL WALL PANEL SYSTEMS  
Colors: Sandstone + Granite

### Playful Balance

The architects selected a combination of PAC-CLAD Reveal panels and HWP panels to add visual interest to the façade. "The intent was to find a balance between the texture and proportion of the two profiles, using the tighter, undulating panel as an accent."

-Eric Requist, Senior Project Architect, Ellis Architects



Case study at [PAC-CLAD.COM/PARA](http://PAC-CLAD.COM/PARA)

PAC-CLAD.COM | INFO@PAC-CLAD.COM | 800 PAC CLAD



## Sticky Topics in Sealant Installation: Reports from the Field

Specifier Roundtable

March 5, 2020 from 12:00 PM to 1:00 PM

Lamar Johnson Collaborative, Chicago

Sealant installation can be a Pandora's box of variables and options: substrate compatibility, joint preparation, field and laboratory testing, and joint profiles are just the tip of the iceberg when considering all the choices that must be made for a successful sealant installation.

[FULL DETAILS & REGISTRATION](#)

## So You Want To Publish A Book?

Industry Roundtable

March 20, 2020 from 12:00 PM to 1:00 PM

Daltile Design Studio, Chicago

Chapter member Kurt Moehlmann will share his intriguing journey on how he became a published author. From the writing, editing, art work, advertising and constant stream of issues, it is not unlike our everyday jobs in the construction industry!

[FULL DETAILS & REGISTRATION](#)

## Building Envelope Tolerances

Technical Roundtable

April 7, 2020 from 12:00 PM to 1:00 PM

Pepper Construction, Chicago

When designing the building envelope, we need to take into account constructability and tolerance of the materials, components, and systems. We will explore the different locations where these tolerances can be found and how to use them to better understand the building and make better constructed buildings.

[FULL DETAILS & REGISTRATION](#)

CSI Chicago Foundation  
Champion Donor

**ArchiTech**  
**CONSULTING, INC.**

[Thank you for supporting the foundation's initiatives.](#)



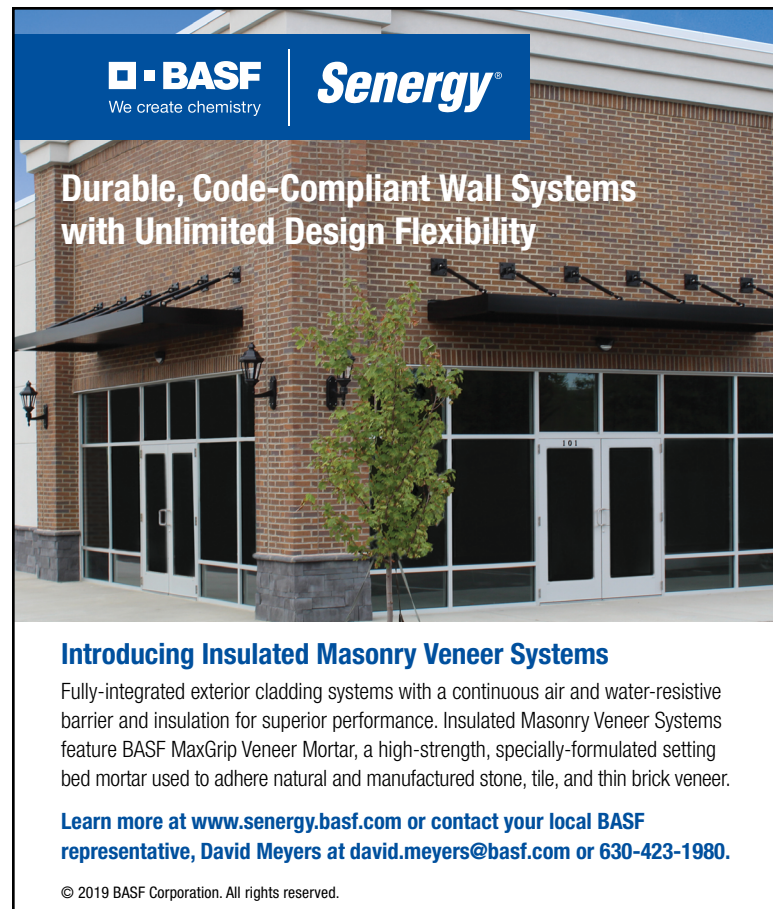
**RENOVATION**  
by MAXXON®

**JUST CLEAN,  
PRIME & POUR**

**YOUR GO-TO SELF-LEVELER**

800-238-8461  
Maxxon.com/123EZ

**LEVEL EZ®**



**BASF**  
We create chemistry

**Senergy®**

**Durable, Code-Compliant Wall Systems  
with Unlimited Design Flexibility**

**Introducing Insulated Masonry Veneer Systems**

Fully-integrated exterior cladding systems with a continuous air and water-resistive barrier and insulation for superior performance. Insulated Masonry Veneer Systems feature BASF MaxGrip Veneer Mortar, a high-strength, specially-formulated setting bed mortar used to adhere natural and manufactured stone, tile, and thin brick veneer.

Learn more at [www.senergy.basf.com](http://www.senergy.basf.com) or contact your local BASF representative, David Meyers at [david.meyers@basf.com](mailto:david.meyers@basf.com) or 630-423-1980.

© 2019 BASF Corporation. All rights reserved.



## Support Rebuilding Together Initiative

CSI's annual Rebuilding Together event is just around the corner! The committee made their first home visit and is compiling a list of much needed items for the home. There will be opportunities for material donations and rebuild day volunteers but right now the most needed thing is funding to buy non donated items, cleaning supplies, and tool rental for the day's projects. Donate to the CSI Chicago Foundation to support CSI Chicago's community outreach efforts to keep our 2020 family warm safe and dry!

[LEARN MORE](#)

## Program Suggestion Tool

We've added a new M2M Tool - The Program Suggestion Form. This tool allows members to share a program topic idea, a great speaker, or tour idea with our programming team. Submit a program idea today or anytime at our M2M Connection Hub.



[SUBMIT AN IDEA](#)

## Committee Connection Tool

Get involved in a committee today to connect with more of your fellow members. Please share your committee interests by submitting the committee interest form today.



[SUBMIT INTEREST](#)

### CSI Chicago Foundation Star Donor



[Thank you for supporting the foundation's initiatives.](#)

### MEET THE NEW CLASS IN FIBERGLASS.

ENGINEERED PRODUCT  
FOR HIGH-RISE BUILDINGS

SUPERIOR PERFORMANCE IN  
STRENGTH AND DURABILITY<sup>1</sup>

2.4X MORE ENERGY-EFFICIENT THAN  
THERMALLY BROKEN ALUMINUM<sup>2</sup>

#### WINDOWS • DOORS • STOREFRONTS • WINDOW WALLS

#### Single-Source Solutions at a Competitive Price. From Pella.

Envisioning a luxury, suburban-meets-urban experience, the development team looked to Pella® Impervia® large combination fiberglass windows. Their exceptional durability meets the rigorous performance requirements of the building while providing views that maximize daylight without compromising energy efficiency.

One Southdale Place • Edina, MN  
Architect: BKV Group  
General Contractor: Kraus Anderson  
Owner: StuartCo



COMMERCIAL

<sup>1</sup> In testing performed in accordance with ASTM testing standards, Pella's Duracast® fiberglass composite has displayed superior performance in strength, ability to withstand extreme heat and cold, and resistance to dents and scratches.

<sup>2</sup> U-Factor of Duracast frame is 2.4 times greater than that of thermally broken aluminum when compared in thermal testing.

© 2018 Pella Corporation

Chris Carpenter, CSI, CCPR  
Architectural Representative  
630-675-4750  
ccarpenter@pella.com

## BLUE LINE BUILDING ★ PRODUCTS

Independent Manufacturers Rep

"The Right Product for the Right Application"

**Morin®**

A Kingspan Group Company

**FUNDERMAX®**

for people  
who create



[www.Bluelinebp.com](http://www.Bluelinebp.com)

**Matt Martino**  
773.251.0066

[mmartino@bluelinebp.com](mailto:mmartino@bluelinebp.com)

## 150+ Attendees Pack The 2020 Building Enclosure Event

Written by: Brad Schwab, CSI, CDT

It was a packed house at Maggiano's in Chicago on Tuesday, February 25, 2020. 150+ attendees gathered to hear Steven Doggett, Principal Building Scientist of Built Environments, Inc. present his latest research findings on water resistive barriers.

Water-Resistive Barriers (WRBs) have evolved to serve multiple functions. Despite these advances, performance expectations still reflect over-simplistic assumptions and problematic testing methods. Interfaces with modern wall components also remain ill-defined with respect to the WRB's primary function of liquid water resistance. Industry trends toward component integration have further strained the WRB's intended role.

The two-hour+ presentation provided an overview of Steve's latest findings from experimental research and computational modeling to demonstrate performance attributes of recognized WRB systems. Moisture transport and storage was reviewed for three dynamic interfaces:

- A) the exterior insulation interface
- B) the substrate interface
- C) the fastener interface.

The attendees left with a better understanding of the following and more from the presentation:

1. The role of WRBs in context with key interfaces in modern wall design.
2. The basic building science principles to identify new challenges in WRB performance.
3. Common failure mechanisms associated with exterior insulation.
4. Ways of improving WRB systems, testing standards, and installation practices.



Steve did a great job presenting his findings and facilitating engaged dialogue with the audience. We even raffled off three \$100 gift cards for those attendees who completed their passport to prizes by visiting each of our four sponsors.

Thank you to all those who attended, Steve and our sponsors [Atlas Roofing Corporation](#), [Kingspan Insulation](#), [Metl-Span](#), and [Parksite/DuPont](#). We would also like to give a huge shout out to all our Industry Partners - AIA Chicago, AIA Northeastern Illinois, BEC Chicago, CAC RCI, CRCA, CSI Northern Illinois, Illinois Green, and SEAIOI.

[Check out photos from the event.](#)



### Event Sponsors



### Industry Partners





## Learning from Owners



**Written by: Elias Saltz, CSI, CCS, SCIP**

The [Construction Users Roundtable](#) (CURT) is an industry association made up of the largest commercial owners and big construction companies. Owner members include BASF, ExxonMobile, General Motors, Google, Honda, Procter & Gamble, and the

US General Services Administration, among many others. Familiar names among contractor members include Graycor, LendLease, and Turner Construction. Given the size and profile of the major members, why don't architects and other design professionals even know it exists?

CURT was founded in 2000 to provide leadership on business issues faced by construction owners. Among other things, CURT represents "the Owners' voice" to the industry, promoting their interests on construction issues, provides a forum for sharing knowledge, and allows them to develop industry practices and expectations with respect to myriad challenges they face when developing very large projects (\$1 billion and larger). Every year, CURT holds several member meetings and summits and one annual [national conference](#). The most recent national conference, attended by over 500 people and held in Phoenix, wrapped up on February 12, 2020. The theme of the event was "Promises Made, Promises

Kept." Attendees and exhibitors, other than the owners, included general contractors, technology vendors, design-builders of industrial equipment, labor unions, and other related associations.

### What Happens at the CURT National Conference?

The CURT National Conference agenda offers multiple large-room presentations on a variety of topics. Some of the presentations were general business or inspirational sessions: [Ross Shafer](#) gave a talk entitled "How to Stay Relevant," [Sage Policy Group's Anirban Basu](#) offered an economic outlook, and celebrity chef [Jeff Henderson](#) told his story about overcoming poverty and being a federal prison inmate.

Other presentations included a talk about the supposed differences between different generations of workers in the labor force (hint: other than experience level, there aren't really any differences; baby boomers, gen-x and millennials are essentially the same), and an emotional talk by [Cal Beyer](#) on suicide prevention for construction workforces. Finally, there were several case studies of actual projects, including Constellation Brands' massive new Corona/Modelo brewery in Piedras Negras, Mexico, where they brew over 800 million gallons of beer every year.

Between large room presentations were several breakout sessions that dove deeper on the issues presented in the general sessions. Those options included focused discussions of international construction, labor risk, site safety, technology, and workforce education.

While presentations occupied the bulk of the time, the real reason people go to the CURT National Conference are the many opportunities to network and develop business relationships. Each day there were several networking breaks held in the exhibit hall, meals and evening cocktail parties.

### A Specifier at CURT

[Conspectus, Inc.](#), the nation's largest independent specifications consulting firm, attended the conference, its first foray into CURT. Foremost among their reasons for participating is that in addition to its work for architects, Conspectus offers its specifications services directly to owners, and where better to meet the largest and most active owners in the industry? If issues surrounding design documentation are being deliberated, either during formal meetings or around a lunch table, Conspectus is curious to know about them and has relevant experience and knowledge to contribute.

Conspectus participated in conversations including questions about how written design documentation becomes incorporated in a building information model, and then cataloged and delivered by project management software platforms. Other discussions covered how to enforce compliance with owners' design standards and how to maintain

*Article continued on the next page.*



Creating Value.

Reducing Risk.

Where Design and Construction Meet.



*A Full Suite of Industry-Leading Capabilities:*

- Systems and Performance Documentation*
- Construction Specifications*
- Risk & Quality Advisory*

Conspectus, Inc.  
 Elias Saltz, CSI, CCS  
 Chicago, IL  
 609 628 2390  
[esaltz@conspectusinc.com](mailto:esaltz@conspectusinc.com)  
[www.conspectusinc.com](http://www.conspectusinc.com)



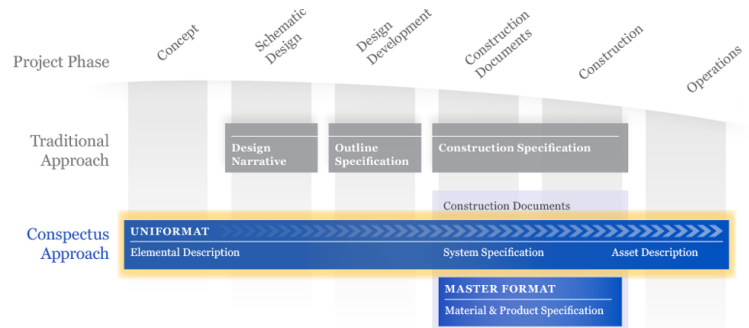
## Learning from Owners (Continued from previous page)

those standards in the first place. Others included ideas to achieve transparency between team members.

Conspectus has solved these problems. Patent pending [Conspectus Cloud](#) integrates all project information into systems and performance descriptions, integrating owners' project requirements with specifications in a single web-based platform. The tool makes all information available to the entire project team, enabling unparalleled coordination and collaboration. It allows informed decision-making for the owner's benefit. Because Conspectus Cloud is built on common database technology and uses [Uniformat](#) and MasterFormat® to organize information, it will interface seamlessly with BIM and PM software. Best of all, the Conspectus approach [closes the gaps](#) between the traditional project phases, maintaining a consistent flow of information from project inception through operation.

### Encouraging Architects to be Represented

While it's reasonable to expect that architects, representing a third of the "OAC" triad, would be involved with CURT, only a couple attended (including Conspectus). Even the AE firms that work for the large owners do not join CURT, nor do they send representatives to hear their clients' concerns or represent the design team perspective. This seems crazy, but perhaps not surprising. CURT is a participant in ConsensusDocs, which compete with AIA contract documents,



so why would AIA encourage architects to go to CURT? As members of the construction industry seeking to learn the perspectives of their counterparts, make connections for their own benefit as well as contribute to the industry as a whole, the design professions should join, attend and participate in CURT. In addition, they should establish a committee to work with owners on improving communications and relationships between themselves and the other parties to a construction contract. Only then will the design community's voices be heard and their perspectives understood by the biggest players in the industry.

### Promises Made, Promises Kept

The theme of the event is an apt one. How does an industry with a reputation for chicanery and shenanigans create an environment where the parties have confidence in one another? Follow Ross Shafer's advice: People need to have empathy for one another, listen harder, act with honesty and full transparency, support one another, and respond urgently to any question or problem that arises. Those practices start and end with strong relationships, which just happen to be built when service providers and their clients spend time talking with one another.

## CSI Chicago Gold Partners

**ArchiTech**  
CONSULTING, INC.

**VCI**  
HUNTER  
CONTINUOUS INSULATION

**team**

[Click here](#) to contact a local representative.

**Jeff M. Diqui**  
Director, Industry Development  
and Technical Services

Office: 630-396-7141  
Cell: 630-606-8220  
jdiqui@imiweb.org  
2140 W. Corporate Drive  
Addison, IL 60101

**team**  
UNION MASONRY CRAFTWORKERS  
CONTRACTORS & CONSULTANTS

**INTERNATIONAL  
MASONRY  
INSTITUTE**  
www.imiweb.org

IB-C-14

## Exam Registration Now Open!

News From CSI National



Registration is now open for the [CDT](#)<sup>®</sup>, [CCS](#)<sup>SM</sup>, and [CCCA](#)<sup>SM</sup> Certification Exams! There are a variety of resources available, from study guides in the [CSI Bookstore](#) to online study groups.

Early Bird Pricing is only valid until March 18 - then prices go up! There's no better time to register.

If you're considering taking an exam, start your journey by downloading the free Candidate Handbook available from the CSI Bookstore for [CDT](#), [CCS](#), and [CCCA](#).

The Candidate Handbook will guide you through the registration process and offer helpful information on what to expect and how to prepare.

[DOWNLOAD THE CANDIDATE HANDBOOK](#)

"Professionally, gaining CSI certification has opened many doors for me that otherwise would not have been opened and often made the difference when winning a project over my competitors. Personally, it has been very rewarding gaining knowledge directly related to my industry, and earning the respect of those I call on."

T.J. Gottwalt, DHT, AHC, CDC, FDAI, FCSI, CDT, CCPR, CM-BIM

## CSI Chicago Silver Partners



[Click here](#) to contact a local representative.

## Specifiers: Apply for MSR!

Event From CSI National



Calling all specifiers: Apply now to attend the Master Specifiers Retreat, July 22-24 in Palm Beach, Florida.

Qualified specifiers chosen to attend will have the opportunity to meet one-on-one with product manufacturers who know. Specifiers attend with complimentary hotel reservations and a travel voucher.

This is an unparalleled opportunity to discuss your project with knowledgeable product reps - apply today!

[SPECIFIER APPLICATION](#)

## CSI North Central Region Conference

Events From CSI NCR

April 30 - May 2, 2020

Lawrence, Kansas

Hosted by: Flint Hills Chapter

Registration for the 2020 CSI North Central Region Conference is Open! Sign up today as an attendee or an exhibitor.

[LEARN MORE](#)



The CSI Flint Hills Chapter Presents  
**2020 North Central Region Conference**  
April 30 - May 2 in Lawrence, Kansas  
Featuring Topics on Resilient Design



## Chicago Construction Expo and Safety Conference

March 2-3, 2020

Drury Lane Conference Center, Oak Brook, IL

The Association of Subcontractors and Affiliates of Chicago (ASAC), in partnership with the Construction Safety Council, is proud to announce their upcoming Chicago Construction Expo and Safety Conference. This annual event serves Chicagoland construction industry professionals by providing unique opportunities for business-to-business commerce, education and networking. The event boasts dozens of educational safety sessions, nearly 150 exhibitors & more than 1500 attendees.

[FULL DETAILS](#)

## Chicago Trade Show and Symposium

March 6, 2020 - 7:00am to 11:00am

University Club of Chicago, Chicago, IL

SEAOI is pleased to announce the 28th Annual Chicago Trade Show and Symposium. The event provides a forum for forum for engineers to interact with trade professionals and to learn from informative presentations. The event provides ample time to interact with up to 20 exhibitors.

**CSI Member Discount Code For Member Rate: CTSSCSI**

[FULL DETAILS](#)

## Methods and Methodology for Cleaning Historic Masonry - 1 LU/HSW

March 10, 2020 12:00 - 1:00 p.m. EST  
Webinar

Learn the rationale and methodology for cleaning both interior and exterior historic masonry surfaces. The masonry can be susceptible to damage caused by an improper selection of materials or methods. In this webinar, get an introduction to current cleaning systems and their general performance and applications. Specific attention will be paid to chemical, micro-abrasive, laser and latex systems.

[FULL DETAILS](#)

## Evolving Codes and Innovative Timber Construction in the Midwest:

### Wood Design Symposium

March 11, 2020, 8:15am to 4:30pm

Venue SIX10, Chicago, IL

Earn 6 AIA/CES HSW LUs, 6 PDH credits or 0.6 ICC credits

Did you know that Chicago is undergoing its first extensive building code update in over 70 years? Are you keeping up with evolving codes and the opportunities they present for timber construction? Come get practical design knowledge that will teach you how to utilize innovative wood systems.

[FULL DETAILS](#)

## Roofing Code Seminar

March 26, 2020

Marriott-O'hare, Chicago, IL

This August the NEW Chicago Building, Existing and Energy Code becomes mandatory!

Join CRCA's Bill McHugh and NRCA's Mark Graham as they help you to better understand the new state and city roofing codes.

[FULL DETAILS](#)

### Advertise Your Chicagoland Event Here!

Submission deadline: 15<sup>th</sup> of preceding month  
\$70 for chapter members  
\$100 for non-members

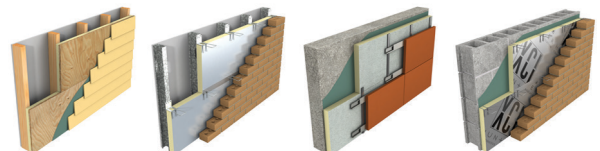
Contact: [administration@csichicago.org](mailto:administration@csichicago.org)

Renee Doktorczyk, FAIA, CSI, CCS, SCIP  
[Renee@ArchiTechSpec.com](mailto:Renee@ArchiTechSpec.com)

**ArchiTech**  
CONSULTING, INC.

800 E. Northwest Hwy, Ste 208  
Mount Prospect, IL 60056-3457  
Tel: 224.345.3450

## Energy Efficient Xci Polyiso



Brad Schwab • 630-772-3516  
[bschwab@schwabgroup.net](mailto:bschwab@schwabgroup.net)  
[www.hunterpanels.com](http://www.hunterpanels.com)