

May 2017

CHANGE ORDER

CONSTRUCTION SPECIFICATIONS INSTITUTE CHICAGO CHAPTER

Smashing Joint Program

The CSI Chicago and Northern Illinois Chapters came together and held their monthly chapter meetings at the new Underwriters Laboratories Building Envelope Performance Laboratory in Northbrook, Illinois. The event started out with a tour of the facility which included a demonstration of impact testing on a glass window that tests for large missile impact in accordance with ASTM E 1996 and structural load testing on a sliding glass door to determine the resistance to wind loading in accordance with ASTM E 331.

Impact testing is done by shooting either a 2 gram steel ball (small missile) or a wood 2x4 (large missile) at different locations on window units using multiple pressures. This determines the window unit's resistance to windborne debris during a hurricane and allows the design professional to select the right window for their projects.

CONTINUE READING...

QUICK LINKS

UPCOMING EVENTS

PRESIDENT'S LETTER

SPONSORSHIP OPPORTUNITIES

MEMBER NEWS

CHAPTER NEWS

LEADERSHIP DIRECTORY



773-466-4147

csichicagochapter@gmail.com

<http://chicago.csinet.org>



TABLE OF CONTENTS

PRESIDENT'S LETTER
UPCOMING EVENTS
MEMBER NEWS
 ANNIVERSARIES AND NEW MEMBERS
 MEMBER SPOTLIGHT
 BEYOND THE CHAPTER
CHAPTER NEWS
 EVENT RECAP
HOT TIP OF THE MONTH
SPONSORSHIP AND MARKETING
 UPCOMING OPPORTUNITIES
 PARTNERSHIPS AND MARKETING
INSTITUTE AND REGIONAL NEWS
INDUSTRY EVENTS
JOB OPPORTUNITIES
LEADERSHIP DIRECTORY
 OFFICERS AND DIRECTORS
 COMMITTEE MEMBERS
CONTRIBUTED ARTICLES
THE CLOSEOUT



Outstanding Chapter Commendation
Chicago Chapter 12 time award recipient

UPCOMING EVENTS

Bowling Night

Social Event: Thursday, May 11, 6-8pm

Site Built Shower Basin Design

Specifier Roundtable: Thursday, May 18, 2017, 12-1pm

Annual Banquet and Recognition Night

Social Event: Wednesday, May 24, 5:30-8:30pm

White Sox Game and Tailgating

Social Event: Friday, June 23, 2017

Summer Series Roundtables

2nd Wednesday in June, July and August, 12-1pm

SAVE THE DATE

Chapter Program: September 26, 2017, 5pm

President's Letter

May Is When We Say Thanks!

May is my favorite month of the year- the days are getting longer, the weather is getting better, the world is greening, and my garden is starting to wake up. I spend as many hours as I can spare puttering around with bags of peat moss, compost, grass seed & fertilizer in the yard and I get to talk to my neighbors without being harried by a freezing wind or rain about stuff like the Bears draft. You get Memorial Day weekend with its All-American traditions, and 31 days of blissful May-ness. Plus, my birthday is in May, so there's that, too.

May is also the time of year when we in the Chicago Chapter bring our program year to a close before things slow down during the summer months. And it's the time of year when we get to reflect on our accomplishments and say thanks to the many volunteers who made the year a success.

Next Thursday on the 11th, we host one of the few purely social events in our calendar by going [bowling](#) together at the Lucky Strike in River East. We still have a few bowling spots available and all are welcome, including friends and family outside of CSI. Since its been a few years since I last bowled (at my daughter's birthday party), you might have to spot me a few pins.



We're sending a contingent of chapter members to the Regional Conference in Madison this week to take part in all the great education and training that goes on, as well as attend the business meeting and annual Regional banquet and awards dinner- hopefully we can win a few awards for the chapter in recognition of the hard work of so many individuals. A special thanks to Melissa Gibson, who headed up the efforts to prepare the awards packages for submission- not an easy job!

And then on Wednesday May 24th, we put a big red bow on the year with our chapter's [Annual Banquet and Recognition Night](#), hosted at the Cliffdwellers club. I can picture it now- chilling on the roof deck overlooking Millenium Park with a glass of wine in my hand.... And I'll get to do what I'm guessing is going to be my favorite part of being president this year. I will

President's letter continued on the next page...

NEED SUBFLOOR SOLUTIONS? WE'VE GOT YOU COVERED.


- PRIMERS AND MOISTURE MITIGATION SYSTEMS
- REPAIR, PATCHING, AND SMOOTHING COMPOUNDS
- FLOOR LEVELING COMPOUNDS AND UNDERLAYMENTS
- WATERPROOFING MATERIALS
- ADHESIVES



The best floors are based on subfloors from



Toll Free: 855.391.2649 www.hpsubfloors.com



Mark R. Nelson
President

Nelson Testing Laboratory
717 Industrial Drive
Elmhurst, IL 60126

Ph.: 630-501-0230
Fax: 630-501-0270

mnelson@nelsontesting.com
www.nelsontesting.com

Chapter Partners

PLATINUM PARTNERS



GOLD PARTNERS

Cultured Stone® by Boral®



UNION MASONRY CRAFTWORKERS
CONTRACTORS & CONSULTANTS

HÄFELE



SILVER PARTNERS

ArchiTech
CONSULTING, INC.



ALLEGION



NORCON
Inc.



RULON INTERNATIONAL



President's Letter (Cont.)

get to thank all of you who worked so hard to make our chapter what it is.

In my letter to the chapter in January, I talked about the idea of “bucket-fillers” - people who recognize that the value of CSI is not merely in the “transactional” value of member dues in exchange for education or certification or a good magazine. Bucket-fillers are people who have come to realize the value of getting to know one another professionally & personally, and who have developed a personal stake in the collective successes and failures of our CSI. So, they contribute their time, energy, financial resources & clout to help us do all the little things that make our chapter so great. And the Banquet we all get to celebrate them and their efforts & accomplishments. I hope you can join us for what will surely be a wonderful night to cap off my favorite month.

Take care, and Happy May!

Jeremy Olsen CSI, CCS, CCCA, AIA, LEED AP

Chris Carpenter, CSI, CCPR
Architectural
Representative

Pella® Windows & Doors
27545 Diehl Road, Suite 100
Warrenville, IL 60555
Phone: 630.675.4750
E-mail: ccarpenter@pella.com



COMMERCIAL



CSI Chicago Bowling Night

Thursday, May 11, 2017



Try to construct a perfect game with CSI Chicago and enjoy a night of great food and drinks.

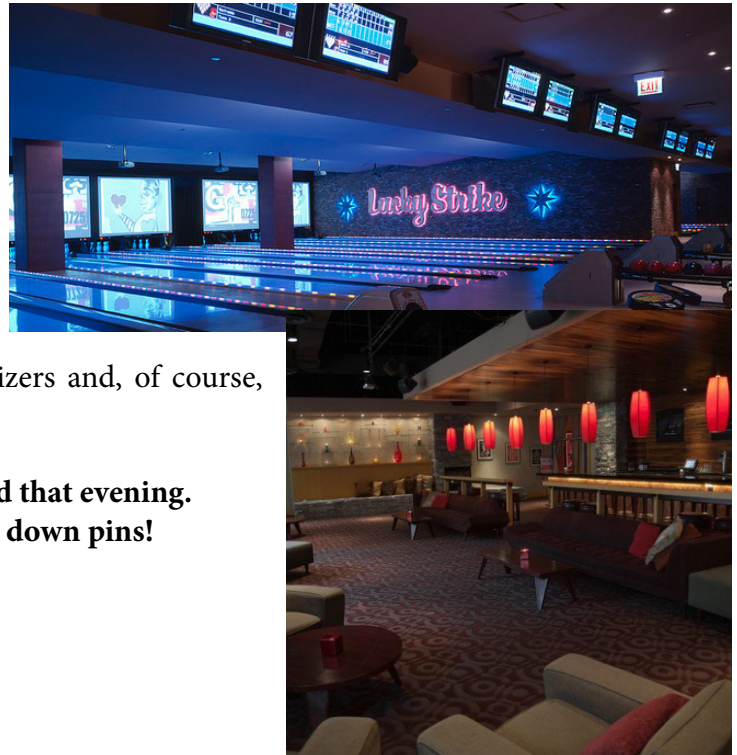
Location: Lucky Strike

River East Center 322 E. Illinois St., Chicago
(next to AMC Theatres)

Time: 6:00 PM – 8:00 PM

Arrive a few minutes early for shoe rental.

The bowling night will be held at Lucky Strike where we have reserved eight lanes. Your admission will include two hours of bowling, shoe rental, a variety of appetizers and, of course, dessert. A full cash bar will be open during this event.



**Contests with many great prizes will also be held that evening.
Not all contests require a the ability to knock down pins!**



Questions?

Comments?

Concerns? csichicagochapter@gmail.com

Contact:
Beth Winkler
773-466-4147

Registration: Required by Monday, May 1

Bowling Attendee: \$45 per person (includes bowling, shoe rental and food)

Non-Bowling Attendee: \$30 per person (limited spots, includes food only, no bowling)

*Event open to members and nonmembers

Register ▶▶

Become A Sponsor!

Event Sponsor: \$150 Includes one bowling attendee, logo on sign at registration table, recognition in following month's newsletter with logo and link

Lane Sponsor: \$350 Includes 4 bowling attendees assigned to your lane, same recognition as event sponsor plus sign at lane (you select the bowlers or we can help you find design/construction professionals to fill your spots)

Contest Sponsor: Add to the fun by donating a prize! Name your contest. Contests can be individual and team. Suggested Individual prizes of \$50 value. Suggested team prizes \$10-50 value per person (8 people per team). Contest sponsors will be recognized in the following month's newsletter.

Contest Ideas: Best team name, best score, best golf score (worst bowling score), most gutters, most strikes

Prize Ideas: Gift cards, cash, round of drinks (team prize).

Site Built Shower Basin Design Specifier Roundtable: Thursday, May 18, 2017



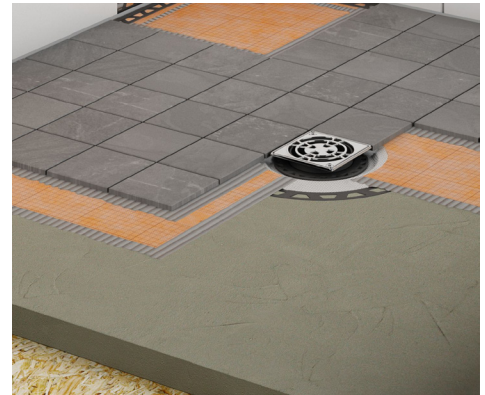
Site built shower basins are common in public facilities and high end residential/hospitality occupancies. There are many influences on the design of the shower basins. In addition to aesthetics, the location of the drain, slab depressions, and waterproofing locations need to be considered. Accessibility will affect the design of some of the shower basins.

Join us in a discussion on how we can work with these parameters for shower design.

Facilitated by: Larry Nordin, AIA, CSI-CCS, Associate Principal,
Solomon Cordwell Buenz

Learning Objectives:

1. Discuss accessibility requirements for different occupancies.
2. Review traditional site built shower basin construction.
3. Discuss options for accessible shower basin detailing
4. Evaluate risks for shower water overflow.



Time: Noon – 1 PM

Location: Solomon Cordwell Buenz, 625 N Michigan Ave, Chicago

Or by webcast on your computer. Log in information e-mailed in advance.

Continuing Education: 1.0 AIA/CES LU



[Click Here to Register](#)

Reservations: Required by May 15, 2017. Limited seating available on a first come basis, with priority given to CSI Chicago members. Non-members requesting to attend in person will be added to a waiting list until members are accommodated. Notification of available non-member in-person seating is sent at least two business days in advance.

If your plans change and you cannot honor a reservation, please contact the Chicago chapter so we can offer your seat to someone on the waiting list. Attendance and webcast is complimentary to members and non-members.

Webcast for members/nonmembers is available and instructions will sent 2 days prior to the roundtable. Webcast information will be sent to anyone who is not able to get an in-person seat

Email: csichicagochapter@gmail.com or **Call:** 773-466-4147

About CSI Specifiers Roundtables: Sessions are held in an informal setting to encourage dialog and attendees are welcome to bring a snack or lunch. Specifier roundtables are a forum for specifiers and architects to discuss specification topics, exchange ideas and share lessons learned. Experienced, as well as new specifiers, are encouraged to attend these small group sessions that require participation and input by attendees.

CSI Chicago Awards Banquet and Recognition Night

Wednesday, May 24, 2017



CSI Chicago celebrates 64 years as a chapter as we look back at a successful year and recognize all that have contributed to the accomplishments and programs this year.

Catch up with friends, meet new people and recognize achievements.

Members and guests, please join us as we honor those who have contributed to the chapter - both individuals and companies. We will thank our board for their service this past year and welcome the new board who will take office in July. Recognition will be given to new chapter members and those who have reached a continuous membership milestone year.

LOCATION: Cliff Dwellers
200 S. Michigan Avenue
Chicago IL 60604-2487

TIME: 5:30pm Social, appetizers, and cash bar
6:30pm Plated dinner

COST: \$50 per person (member or non-member)

REGISTRATION: Required by Monday, May 15

[Register >>](#)

SPONSORED BY:



CUSTOM[®]
A QUIKRETE[®] COMPANY

Contact: 773-466-4147 or csichicagochapter@gmail.com



Summer Series Roundtables

WED. 6/7 | Summer Series Roundtable | Finished Concrete Flooring

Time: 12:00-1:00 pm

Location: Thornton Tomasetti, 330 N. Wabash Avenue, Suite 1500, Chicago

Continuing Education: 1.0 AIA/CES/HSW LU

[Event Details >>](#)

[Registration >>](#)

WED. 7/12 | Summer Series Roundtable | Curtain Wall Design

Time: 12:00-1:00 pm

Location: Thornton Tomasetti, 330 N. Wabash Avenue, Suite 1500, Chicago

Continuing Education: 1.0 AIA/CES/HSW LU

[Event Details >>](#)

[Registrations>>](#)

WED. 8/9 | Summer Series Roundtable | Specifying Automatic Pedestrian Doors

Time: 12:00-1:00 pm

Location: Thornton Tomasetti, 330 N. Wabash Avenue, Suite 1500, Chicago

Continuing Education: 1.0 AIA/CES/HSW LU

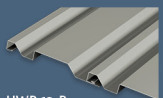
Event Details and Registration: To be available soon.

Bold Visual Effects

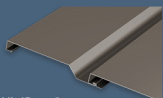


NEW Precision Series wall panels create dramatic shadow lines

Precision Series wall panels provide design flexibility with easy, cost-effective, horizontal or vertical installation. The original Precision Series HWP profile features a 7/8" depth, while the Precision Series Highline profiles are 1-3/8" deep to add visual intensity to a building's exterior. Panels are now available in 8 rib patterns and 33 ENERGY STAR® colors.



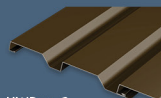
HWP 12-B
WITH OR WITHOUT CLIP



HWP 12-S
WITH OR WITHOUT CLIP



HWP 16-B
WITH OR WITHOUT CLIP



HWP 16-C
WITH OR WITHOUT CLIP



HWPC
BERKSHIRE BLUE - ENERGY STAR

PAC-CLAD.COM

MD: 1 800 344 1400

GA: 1 800 272 4482

IL: 1 800 PAC CLAD

TX: 1 800 441 8661

MN: 1 877 571 20

[PACGREENINFO.COM](#)
YOUR GREEN METAL RESOURCE



White Sox Game and Tailgating Friday, June 23, 2017

AIA Northeastern Illinois | AIA Chicago | CSI Chicago | CSI Northern Illinois



Chicago White Sox vs Oakland Athletics

TAILGATING STARTS AT 5:10PM

GAME STARTS AT 7:10PM

Fireworks after the game

Members, family and friends please plan to attend this fun summer event!

Individual Tickets: only \$25.00

Section 154, Rows 25-34 confirmed

We plan to meet-up at US Cellular Field Parking Lot "A or B" for tailgating. Parking cost is on your own.

Food and drinks at Tailgate provided by [ASSA ABLOY](#).

Deadline For Registration May 15th, 2017

Questions please contact: Dewain Peterson dewain.peterson@assaabloy.com or 630-338-5610

Click Here to Register

Member News

Anniversaries and New Members

Continuous years with CSI...

- 31 Jeff Lucas, CSI**
J. N. Lucas & Associates, Inc.
- 27 Mike Petersen, CSI**
Petersen Aluminum Corporation
- 20 Anne Roeper, CSI, CCPR**
Roxul USA Inc.
- 18 Tim Corbett, CSI, CCCA**
- 14 Richard Cuttaia, CSI**
Tremco, Inc.
- 14 Elaine Fitzgerald, CSI, CCS**
ArchiTech Consulting, Inc.
- 14 Michael Lindsey, CSI, CDT, AHC, CDC**
Michael Lindsey
- 14 Ellen Stoner, RA, CSI, CDT, ALA, LEED AP**
AltusWorks, Inc.
- 14 David Urschel, CSI**
Loebl Schlossman & Hackl
- 7 David Bessert, CSI**
Tate Access Floors, Inc.

- 5 Eric Overby, CSI, CDT**
Fitzgerald Associate Architects
- 5 Daniel Popplewell, CSI**
Cornell Iron Works Enterprises
- 2 Jason Bellis, CSI, CDT, RRO**
- 2 Curtis Stewart, CSI, CDT**
CertainTeed Gypsum
- 1 Sara Glaviano, CSI-EP**
Huff Company
- 1 Kurt Wenzel, CSI**
- 1 Heather Yario-Rice, CSI, CDT**
Schonox

Welcome New Members...

- Bradley Bland, CSI-EP**
Stego Industries, LLC
- Nicholas Cwikla, CSI**
Malarky Roofing Products
- Ben Kweton, CSI**
Sheet Metal Supply LTD.
- Dominik Soltys, CSI**

Section continued on the next page...

We're more than just a paint company

- Extensive National Architectural Program
- Product and Environmental Certifications



Master
Painters
Institute

BEHR
behr.com/architect

Let's Celebrate Together

Share your personal or professional achievements by notifying the chapter at csichicagochapter@gmail.com for inclusion in the following month's newsletter.

Congratulations to those who have taken and passed their spring certification exams:

CDT Exam | **Kieran Carlisle, CSI, CDT, E.I.T.** | Dow Building & Construction

CDT Exam | **Timothy Kennedy, CSI, CDT** | Klein and Hoffman

CDT Exam | **Rachel Nava, CSI, CDT** | Epstein

John Dashner, CSI, A & D Products, LLC and current president of CAC-RCI, is proud to share the news of CAC-RCI's recent accomplishments:

CAC-RCI and Chapter Members Honored at RCI's 32nd Annual Convention in Anaheim, California
Outstanding Affiliated Chapter Award, Platinum Classification

Mr. Dennis McNeil, FRCI, RRC, RRO, CSI, CCS was as a Retiring Nominating Committee Member
Read the full story and see all the CAC-RCI members who were recognized in [this article](#).

John Dashner and other CAC-RCI members made a donation to the RCI Foundation and Robert W. Lyons Scholarship Fund on behalf of CAC-RCI. CAC-RCI was one of 17 RCI Affiliated Chapters to provide a donation to the foundation. Donations fund the Foundations' mission to support research, advance education, and disseminate information on issues important to the building envelope industry. [Read article](#).

PRODUCTS FOR CONCRETE RESTORATION

WALL PROTECTIVE AND DECORATIVE COATINGS

ADMIXTURES FOR CONCRETE

PRODUCTS FOR STRUCTURAL STRENGTHENING

PRODUCTS FOR LARGE PROJECTS, DAMS, CANALS AND VIADUCTS

PRODUCTS FOR TILE AND STONE

PRODUCTS FOR ROAD MAINTENANCE

PRODUCTS FOR SPORTS FACILITIES

PRODUCTS FOR CEMENTITIOUS AND RESIN FLOORING

PRODUCTS FOR UNDERGROUND CONSTRUCTION

ELASTIC SEALANTS AND ADHESIVES

PRODUCTS FOR SYNTHETIC TURF

PRODUCTS FOR RESILIENT AND CARPET FLOORING

PRODUCTS FOR ACOUSTIC INSULATION

PRODUCTS FOR BELOW-GRADE WATERPROOFING

PRODUCTS FOR WOOD FLOORING

THE WORLD OF MAPEI

TOTAL ARCHITECTURAL SOLUTIONS

As the leading global manufacturer of mortars, grouts and adhesives, MAPEI also offers the full spectrum of chemical products for construction projects – everything from dams, bridges and tunnels to malls, hospitals and condominium towers. We partner with the architectural community by providing a single source for system specifications, technical expertise/consultation and practical online architectural tools.

www.mapei.us/architects
Illustrations by Carlo Stanga

MAPEI
ANHYDRUS - POLYMER - ORGANIC PRODUCTS FOR BUILDING

Member Spotlight Guadalupe (Lupe) Casimiro , CSI - New Member

By: Melissa Gibson, NCARB, CSI, CCCA, LEED AP BD+C, Epstein



Guadalupe(Lupe) Casimiro joined CSI this year after many years of recruitment from a friend and former coworker (me). Lupe has been a project manager and architect at Jensen & Halstead in Chicago for five-and-a-half years,

where her work is primarily focused on healthcare architecture in medical offices and hospitals around the Chicagoland area. Lupe also has years of experience in educational, industrial, and aviation architecture.

Lupe grew up in the Pilsen neighborhood of Chicago and is a graduate of Benito Juarez Community Academy. Lupe then attended Illinois Institute of Technology and graduated with a Bachelor of Architecture degree. While at IIT, Lupe became involved in the student chapter of Arquitectos (The Society of Hispanic Professional

Architects) and later served on the professional Board of Directors as Treasurer and Vice President. Lupe is also a former member, Community and Economic Development Interest Group Leader, and Grants Chair of the Young Leaders Fund of The Chicago Community Trust, a young professional affiliate of The Chicago Community Trust that focuses on funding grants for entrepreneurial nonprofit organizations in metro Chicago.

Lupe loves to travel and tries to get out of the country at least once a year to explore architecture and landscapes, experience different cultures, and discover new friends. Her most recent trip covered Madrid, Athens, Mykonos, and Santorini. She is also usually able to find salsa dancing wherever she travels to practice her decades of experience in Latin dancing. Lupe has choreographed many youth team Latin dances for quinceañera and was also part of an amateur team that placed fifth in the world for Rueda de Casino style dancing, a salsa-in-the-round format with a caller that coordinates the group.

Since graduating, Lupe has lived in many Chicago neighborhoods - from Hyde Park to Rogers Park, with a few stops in between. A few years ago she settled back into the Pilsen community on 18th street, where she enjoys the vibrancy, food, and people of the neighborhood.

The Right Materials



The Right Way

Constructed by Experienced
Union Craftworkers and
Contractors

For answers to your masonry
questions, call 1-800-IMI-0988



Scott Conwell, FAIA, CDT, LEED AP BD+C
2140 W. Corporate Drive, Addison, IL 60101
Phone: (630) 396-3144 EMail: sconwell@imiweb.org
www.imiweb.org



Wesley Sherrer, CSI
Midwest Region Manager
wesley.sherrer@momentive.com
+ 1 614 392 1015
+ 1 614 314 9217 M
Momentive Performance Materials Inc.
6716 Damson Place
Westerville, OH 43082
www.ge.com/silicones



[Sign up to write a member spotlight >>>](#)

Beyond the Chapter

Chicago CSI Members activities beyond Chicago Chapter

The following is a list of members of the Chicago Chapter of the Construction Specifications Institute that are volunteering for construction industry activities beyond the Chicago Chapter of CSI.

I hope to receive information regularly to expand this list and keep it current so that we can all be informed as to the breadth of member activities. Please send your construction industry volunteer activity information to me at:

jstypka@jahn-us.com

Thank you,
Joe Stypka

Member

Activities Beyond

Andrea Baird	Chicago CSI's representative judge for the Future Cities Competition 2017
Randy Chapple	Construction Specifications Institute Delegate to the Tile Council of North America (TCNA) Handbook Committee and to the ANSI A108 Accredited Standards Committee for Ceramic Tile Member of the U.S. Technical Advisory Group to ISO Technical Committee 189 on Ceramic Tile Committee member of ASTM E2751/E2751M "Design and Performance of Supported Laminated Glass Walkways"
Scott Conwell	International Masonry Institute (IMI) Delegate to the Tile Council of North America (TCNA) Handbook Committee and to the ANSI A108 Accredited Standards Committee for Ceramic Tile Member of the U.S. Technical Advisory Group to ISO Technical Committee 189 on Ceramic Tile
Jeff Diqui	Building Enclosure Council – Chicago chapter, Program Director Air Barrier Association of America (ABAA) Terminations and Flashings Committee
Renee Doktorczyk	CSI North Central Region, Institute Director Nominating Committee
Peter Grotenhuis	Chicago CSI's representative judge for the Future Cities Competition 2017
Frank Heitzman	Construction Specifications Institute, UDS Program Task Team
Alan Itzkowitz	Construction Specifications Institute, Certification Strategic Group Northern Illinois Chapter CSI, Vice President
Elias Saltz	Construction Specifications Institute, Practice Area Curriculum Committee CSI North Central Region Electronic Communications Chair
Joe Stypka	National Institute for Building Sciences (NIBS), UDS Modules Task Team for the National CAD Standard (NCS) American Institute of Architecture (AIA) MasterSpec Architectural Review Committee American Architectural Manufacturers Association (AAMA) AMC Finishes Committee Member



Matthew Reed

Market Development Manager

Sr. Certified DuPont™ Tyvek® Commercial Specialist

1563 Hubbard Avenue
Batavia, IL 60510

tel (800) 338-3355
ext 200838

cell (630) 788-0969
fax (330) 875-1700

mreed@parksite.com

Chapter News

Looking for a Summer Intern?

If your company or someone you know is in need of a summer intern, CSI Chicago can connect you with knowledgeable and eager students. This opportunity is open to all companies and CSI Chicago membership is not a requirement.

For more information, please contact our Student Affiliate Chair, Peter Grotenhuis at peter@sjmallein.com.

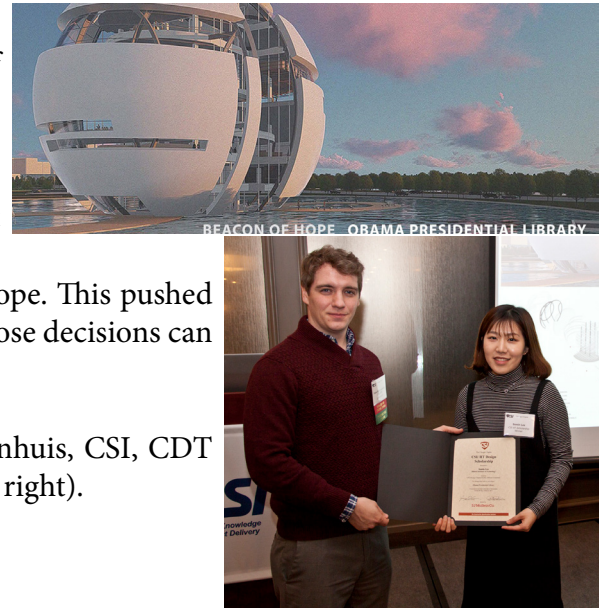
CSI Awards IIT Student With Design Scholarship

Somin Lee of Illinois Institute of Technology was the recipient of this year's CSI Chicago Design Scholarship for her project for the Obama Presidential Library.

Applicants for the scholarship were tasked with creating a text narrative of their design process, and how different factors influenced their material choices in regards to the building envelope. This pushed the students to dig deeper into issues of system design and how those decisions can impact aesthetics as well as building function.

This year's award was sponsored by [SJ Mallein, Co.](http://www.sjmallein.com) Peter Grotenhuis, CSI, CDT recognized Somin Lee at the March 28 chapter program (pictured right).

Read Somin Lee's bio on the [CSI Chicago scholarship website](http://www.csichicago.org).



Know someone who would benefit from CSI Chicago?

Thanks to the hard work and dedication of its members, the CSI Chicago Chapter is among the most distinguished and successful chapters in the United States. If you know someone who might be interested in CSI Chicago, please let us know or share our membership brochure with them.

[CSI Chicago Membership Brochure >>>](#)

Need hard copies? Please send an e-mail to Beth Winkler at csichicagochapter@gmail.com and she can mail you how ever many copies you need.

Section continued on the next page...

Kathleen McGinley
Architectural Sales Representative, CSI

kmcginley@mapei.com
Cell: (630) 808-9944



MAPEI Corporation
1863 Tamohawk Ln., Naperville, IL 60564
Website: www.mapei.com



Häfele America Co.
3901 Cheyenne Drive
Archdale, NC 27263-4000
Phone 800 423 3531 x 5818
Fax 336 862 7683
Mobile 331 213 4545
dwarren@hafeleamericas.com
www.hafele.com

DAN WARREN
Regional Director

Chapter News (Cont.)

Volunteer Spot

Looking to meet a new CSI member or share a project or idea with the group? Please consider signing up for an article submission.

Contribute to this newsletter:

- Project Closeout (Approx. 250 word project summary your firm recently completed w/ 2 photographs)
- Hot Tip of the Month (Approx. 500 word article on a industry related tip for other professionals)
- Member Spotlight on New or Feature Member (250-500 words and photo highlighting a member)
- Event Recap (250+ word summary of the event program)

To sign up for one of these or read more about the tasks, or see what is open click this link to see our sign up on SignUp.com: [More details and Sign up here!](#)

If you have any questions about the expectations of the various tasks, contact:

Beth Winkler csichicagochapter@gmail.com



Because your reputation is on the line every day.

We make DuPont™ Tyvek® CommercialWrap® for professionals who build quality into every job. After all, it's architects and contractors like you who have made us the industry leader for over 25 years. And you're why we continue to develop innovative products, systems and services for the commercial market, like the 10-Year Limited Warranty that gives added peace of mind with every job and the DuPont™ Tyvek® Specialist Network that supports you on and off the site. DuPont™ Tyvek® Weather Barrier Systems—they're all about building a better and even stronger reputation.

For more information contact:

Matthew Reed

Market Development Manager

Senior Certified DuPont Tyvek Commercial Specialist

(630) 788-0969



DuPont™ Tyvek®: CommercialWrap® • Wrap Caps • Tape | DuPont™: FlexWrap™ • StraightFlash™ • StraightFlash™ VF • Fluid Applied WB

© 2016 DuPont. All rights reserved. The DuPont Oval logo, DuPont™, Tyvek®, Tyvek® CommercialWrap®, FlexWrap®, StraightFlash® and StraightFlash® VF are registered trademarks or trademarks of E.I. du Pont de Nemours and Company or its affiliates.

Tyvek.

16-0130

Event Recap

Building Envelope Performance Laboratory Tour - April 18, 2017

Presented by: Wayne Breighner, UL's Building & Life Safety Technologies Engineering Manager,
David Hintz, Senior Project Engineer on UL's Fire Resistance Team.

Article by: Alan Itzkowitz, FCSI, CCS, CCCA | ABI Specifications Consulting

Article Continued from Cover...

Cyclic testing is performed to assess the ability of a product to resist wind and water intrusion that could compromise the building envelope, potentially creating further damage to the interior of a building or catastrophic failure. Immediately following impact exposure, the fenestration product is subjected to cyclical high air pressure to test product performance under varying pressure differentials. Products may also be subjected to water spray to simulate wind driven rain at speeds up to 110 mph.

David Hintz's presentation centered on NFPA 285 exterior wall testing requirements. He reviewed the reasons exterior walls are tested, what the NFPA 285 testing requirements are, and described UL's certification program for exterior wall assemblies and components.

NFPA investigates the ability of a wall assembly to resist flame propagation over the exterior face of the wall assembly, to resist vertical flame propagation within the combustible core or within other combustible components from one story to the next, to resist vertical flame propagation over the interior surface of the wall assembly from one story to the next, and to resist lateral flame propagation from the compartment of fire origin to adjacent compartments or spaces. He showed several videos of the fire propagation tests held in UL's fire test laboratory and you can definitely see how a fire can climb up a wall when the components of the wall assembly cannot resist the spread of the flame.

Wayne Breighner's presentation included a review of the purposes of air and water field testing, provisions for air and water field testing in the specifications, the correct test standards and methods to be utilized and how to interpret and use the information presented in the test results. He reviewed the standards used for field testing, made recommendations for writing proper field testing and mockup requirements in specifications, how the AAMA standards and specifications help the specifier identify the number of specimens to be tested at what test pressures, what the field testing procedures are, and what should be considered when preparing for the field tests.

Wayne presented several case studies that showed the importance and impact testing has on buildings. The case studies showed how inadequate coordination, poor detailing, design issues, and installation problems affect the installation of building components.



Check out our [Facebook page](#) for more event photos.

Section continued on the next page...

Event Recap Young Professional Event - April 6, 2017

By: Rebecca Greenberg CDT, LEED AP BD+C | Eckenhoff Saunders Architects

On Thursday, April 6th, the Young Professionals Committee hosted their third and final event of the year, "Lessons Learned in the Field." Utilizing a rapid-fire format, this event featured seven speakers from the architectural, engineering, construction, and product manufacturing fields. Over pizza and beer provided by our generous sponsors, we learned about some of the issues that our seasoned professionals had experienced on their job sites. Ultimately, we laughed at some mistakes and cringed at others, but most importantly, we learned some valuable lessons from the field.



The program content was featured in two sections. Each included a few minutes of sponsorship presentations followed by our main event speakers. The featured presentations were 6-8 minute glimpses into the lives and careers of some very knowledgeable professionals. Some presentations focused on a specific project, some gave a broad overview of mistakes made or encountered throughout their careers, and all gave great tips for both preventing and resolving tricky situations. The quick program format kept the content engaging and fun, allowing us to hear from a large and diverse group of professionals. After the presentations, we brought our speakers back to allow audience questions. This session generated some lively discussion and further learning points from the program. After a quick break for pizza and drinks, we rallied for a second round of sponsorship, speakers, and Q&A.



As young professionals, we enjoyed content that was targeted to those just embarking on their professional journeys. We certainly received some beneficial advice for problems we could encounter in our future endeavors. Likewise, we think that all seasoned professionals enjoyed the presentations and perhaps even learned a few lessons themselves. We would like to extend a special thank you to all of our event speakers, who took the time out of very busy schedules to present for us. Please help us thank:



Mark Prikazsky, Thornton Tomasetti
Sophie Bidek, Hartshorne Plunkard Architecture
Drew Clausen, Owens Corning
Drew Bayley, Moss Design

Eric Lohmueller, Oslo Builders, LLC
Ray Redmond, Sto
Chris Rockey, Rockey Structures

We would also like to extend a very special thank you to our event sponsors. This event would not have been possible without their generosity. In fact, we owe most of our participation to them - who can say no to pizza and an open bar? We thank them for their support of both this event and the entire CSI Chapter. Please help us thank:



Check out our [Facebook page](#) for more event photos.

Section continued on the next page...

Event Recap Chapter Program - March 28, 2017

Article by: Robert Boettcher | Dodge Data & Analytics

Three Styles: One Goal

The Chicago Chapter of CSI hosted a presentation from three faculty representatives of leading Chicago area architectural schools to discuss current trends in architectural education at their school and some thoughts about where academia is headed in the future.

John Desalvo from the **Illinois Institute of Technology College of Architecture** stressed their history deriving from arts education based in the Bauhaus tradition. Although the influence of Mies van der Rohe still permeates the school, the students are always encouraged to develop an independent approach to problem solving. IIT stresses strong graphic skills in freehand drawing, building realistic physical models to prove the constructability of conceptual designs and a continuation of the Bauhaus tradition of craft in all aspects of architectural education.

The instructors look for clear organizational skills when developing the idea for a solution – at the macro or micro scale. Evaluating each aspect of the solution with respect to characteristics of the local community, the site itself, budgets, and the solution's impact on the environment all foster a creative and responsible way to solve problems in the real world.



The name that built an industry™ **Cultured Stone®** by Boral®

Sculpt the modern landscape.

With an eye on strong, contemporary designs that elevate trends and create demand, the Contemporary Collection from Cultured Stone® by Boral® serves as the zenith of the modern landscape. And with new additions, including Pro-Fit® Modera™ LedgeStone and Hewn Stone™, this latest extension allows you to create new, inventive designs that exceed your past limits. Keep pushing the boundaries of contemporary architecture and design with the entire Contemporary Collection, only from Cultured Stone® by Boral®.

Holly Hirsch
holly.hirsch@boral.com | 224.250.0317



Grant Gibson represented the **University of Illinois at Chicago, School of Architecture**. In contrast to many schools of architecture, UIC stresses an 'avant-garde' approach to educating architects with an emphasis on research and long-term thinking about solutions and their impacts. The school produces students who have learned to speak a common 'UIC language' of aesthetics that may be described as 'cartoonish.' The students are continuously kept off balance by solving small then large scale problems...working from the outside in and



Article continued on the next page...

Event Recap (cont.)

inside out. The school aims to produce a level of discomfort in the students to develop a facile mind capable of solving a wide range of problems without a preconception of the outcome. Cross pollination with other arts disciplines like dance are part of the curriculum.

The school and students are very social media oriented with students always encouraged to 'try and subvert the status quo with a rebellious attitude.'

Faculty member Tristan d'Estree Sterk and student Sarah Aziz presented for the **School of the Art Institute of Chicago, Department of Architecture, Interior Architecture, and Designed Objects**. Although only 10 years old, this program seeks to compete with other well established schools of architecture. The school fosters a strong ethic of 'making things' and continuous exposure to the other arts disciplines at SAIC.



The school strives to give students 'space and comfort' to produce their work in the context of realizing their thought process in the finished works. School faculty and students are committed to changing the profession by broadening the value base of the profession to society at large by a commitment to strong design ideas and innovative building technologies. This goal is summed up with the goal of creating 'Effective, Empowering, Sustainable Structures.'

Thank You Tabletops

Thank you to our tabletops for putting on a great show at the program and for sponsoring our tabletop raffle. Tabletop visitors were encouraged to drop a business card in the raffle bags at each table and each tabletop drew one winner to receive an Amazon gift card.

Tabletops

Architectural Building Solutions

Hafele

Waggoner Brenia Associates (WBA)

Dow Chemical

Icynene



Pictures courtesy of Chris Carpenter, CSI, CCPR.

Check out our [Facebook page](#) for more event photos.

[Sign up to write an event recap >>>](#)

Hot Tip of the Month App for Wall Assemblies

3-Step NFPA 285 Wall Assembly App Simplifies Creation of Compliant Wall Assemblies

By: Brad Schwab, CSI, CDT | Principal, Schwab Group LLC



The Hunter Xci Assembly Guide, available for free in your Apple App and Google Play stores, helps design professionals create NFPA compliant wall assemblies utilizing Hunter Xci polyiso products. Using a simple, 3-step selection process, the app collects your build information and directs you to a PDF that includes the specs and all of the material components necessary to help you achieve NFPA compliance. This handy resource is constantly being updated with new PDFs and assists with over 200 wall assembly combinations. Search “Hunter Xci Assembly Guide” to download your next favorite app today.

[Sign up to share your hot tip of the month >>>](#)



—
YOUR REPUTATION STANDS ON A NAME

So Does Ours

—

Generation after generation, Marvin Windows and Doors has built our reputation through dedication – the same dedication you build into every home. Together, we share a commitment to design, personal attention and the unparalleled ability to customize. As partners, we both draw from these strengths to build a reputation that can be shared.

**CONTACT YOUR LOCAL, INDEPENDENT DEALER
TO DISCOVER THE MARVIN DIFFERENCE TODAY.**

MARVIN 
Windows and Doors

Built around you.®

© 2016 Marvin® Windows and Doors. All rights reserved. ® Registered trademark of Marvin Windows and Doors.
Builder: Seven Custom Homes, Austin, TX

Sponsorship and Marketing

Now clearer than ever, you can see your path to visibility in the construction industry. Our newly designed media kit has all the great benefits you already know in a format that is easier to understand:

[CSI Chicago Marketing and Sponsorship Information >>>](#)

Upcoming Sponsorship Opportunities

Thursday, May 11, 2017: Bowling Night

- Lucky Strike, Chicago, 6-8pm
- **Event Sponsor:** \$150 Includes one bowling attendee, logo on sign at registration table, recognition in following month's newsletter with logo and link
- **Lane Sponsor:** \$350 Includes 4 bowling attendees assigned to your lane, same recognition as event sponsor plus sign at lane (you select the bowlers or we can help you find design/construction professionals to fill your spots)
- **Contest Sponsor:** Add to the fun by donating a prize! Name your contest. Contests can be individual and team. Suggested Individual prizes of \$50 value. Suggested team prizes \$10-50 value per person (8 people per team). Contest sponsors will be recognized in the following month's newsletter. Contest Ideas: Best team name, best score, best golf score (worst bowling score), most gutters, most strikes Prize Ideas: Gift cards, cash, round of drinks (team prize).

To reserve your spot or for more details contact: Beth Winkler at csichicagochapter@gmail.com

Become a Chapter Partner

Help the Chicago Chapter! Become a Partner and Promote Your Company to Influential CSI Professionals

To support the Chicago chapter and continue the high level of programming and education, consider becoming a platinum, silver or gold partner. Increase your visibility among not only high-level CSI members, but the extended 2,000 design & construction professionals who have elected to receive our communications and view the website.



Thank you to all the Partners who support the chapter every month! [View current partners >>](#)

For more information and rates on partnerships and other advertising and sponsorship opportunities, contact the chapter at:

Phone: 773-466-4147

E-mail: csichicagochapter@gmail.com

[CSI Chicago Chapter Media Kit >>>](#)

Looking to Sponsor in a Different Way?

Consider sponsoring an individual's CSI Chicago membership or as an attendee at an upcoming event.

For more information:

csichicagochapter@gmail.com

Institute and Regional News

See you in Madison!

"Capitol Capital Ideas" The 2017 CSI North Central Region Conference May 4-6, 2017, Madison Wisconsin

The conference will be held at the newly renovated Park Hotel on the Capitol Square, facing the Wisconsin State Capitol Building. The Capitol Square is centrally located on the isthmus between Lake Mendota and Lake Monona, and is home to the famous Madison Farmer's Market.

The location on the square has easy access to museums, shops, bars, restaurants, and the lakes. We will be just a few blocks away from the Frank Lloyd Wright designed Monona Terrace Convention Center, and the State Street pedestrian mall which runs from the Capitol Square to the University of Wisconsin campus. For the more adventurous there is easy access to the 12 mile Lake Monona bike path loop.

[More Conference Information >>](#)



The Construction Specifier Magazine

The Construction Specifier is the official magazine of CSI. Click the photo to the right to read current industry articles and the latest issue.



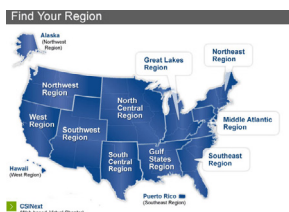
North Central Region Newsletter



Find out what is happening throughout the region by reading the [NCR monthly newsletter](#).

Locate a Chapter or Region

Click on the map to be taken to the chapter locator webpage.



MARVIN
Windows and Doors
Built around you.®

Taylor Neill
Architectural Project Manager -
Chicago
401 State Ave. N.
P.O. Box 100
Warroad, MN 56763

Integrity
from MARVIN
Windows and Doors

Built to perform:

Cell: 312-833-1719
Toll Free: 800-834-7497
Fax: 218-386-4216
e-mail: taylorneill@marvin.com
www.marvin.com

Industry Events

2017 BIM-M Symposium, May 4, 2017 (Architects) & May 5, 2017 (Contractors)

Location: 2140 W. Corporate Dr., Addison, IL, on Thursday, May 4, 2017 (Architects) and Friday, May 5, 2017 (Contractors). This program is registered with AIA for 7.0 Learning Units. There is no charge to attend, but seating is limited.

Details and registration: <https://goo.gl/DV5IjE>.

For additional information contact IMI at (630) 396-3144 or tindelli@imiweb.org.



DCEO ILLINOIS ENERGY NOW - ILLINOIS ENERGY CODE TRAINING

FREE CEU's provided by Illinois Office of Energy & Recycling for the Illinois construction industry to improve compliance with the 2015 IECC and ASHRAE 90.1-2013.

Six different events held at various locations and dates throughout Illinois:

1. Join us for a 2015 IECC Code Update and receive a copy of the 2015 IECC (FREE!) - Full Day Event
2. Come join us for a Quick Breakfast or Lunch Update! and receive Illinois' full-color guide 'Success with IECC for Builders & Trades' (FREE) - Half day event
3. Residential HVAC Load Calculations - All day event
4. Developing & Reviewing Performance-Based Submittals for Code Compliance - Half day event
5. Game On! Commercial Energy Modeling for Code Compliance - All day event, Chicago Loop Location on March 2 and May 4.
6. Trust But Verify: Understanding Energy Modeling Submissions- Half day event , Chicago Loop Location on April 5 and May 24.

[View all event listings for details and registration>>](#)

Architects . . . Three for Free

Three Professional Continuing Education Classes offered for Free from the Chicago Regional Council of Carpenters at our Open House and Health Fair Saturday June 3, 2017, 9:00 am to 2:00 pm. 2.5 LU/HSW & 1.0 LU possible. Continental breakfast and lunch served at no cost.

Carpenters Apprentice & Training Center, 1256 Estes Avenue, Elk Grove Village IL, 847-640-7373

Register today at <https://carpenters.wufoo.com/forms/classes/>

Not interested in the CEUs . . . just attend our [Open House](#).

The Heavy Timber High Rise: Building Tall with Wood in the 21st Century

Thursday, June 8, 2017 8:00 AM to 12:45 PM

Harris Bank Auditorium, 115 South LaSalle Street, 3rd Floor, Chicago

An event for anyone involved in the economic planning, design, construction and operation of high rise structures and interested in the current status of use of wood and engineered wood products in these type of structures. This includes facilities managers, developers, building owners, architects, interior designers, engineers, contractors, and subcontractors.

Continuing Education: Four hours of HSW continuing education credits

[Program information, including speakers and topics >>>](#)

Section continued on the next page...

Industry Events (cont.)

"Wednesdays with Sam"

Presented by the Illinois Structural Masonry Coalition

Sam Rubenzer, a structural engineer and principal of FORSE Consulting, has specific expertise in structural masonry design and a unique talent for adapting the latest finite element software tools to get the most out of masonry assemblies and systems. Sam is an expert who can teach other SE's to become structural masonry experts using their current software.

The goal of introducing Sam to the structural engineering community in Chicago is so that Sam can come to your office and demonstrate the effectiveness of structural masonry through instruction on how to use your existing SE software to create efficient structural solutions with low cost, readily available and expedient masonry.

For additional information and to book a time for Sam to come to your office, contact IMI at (630) 396-3144 or tindelli@imiweb.org.

Masonry Education Webinar Winter Series

These webinars are intended for designers, facility managers, construction managers, owners and members in good standing of the International Union of Bricklayers and Allied Craftworkers, and their signatory contractors.

Tuesday, May 2 | 1 LU/HSW | Constructing Resilient Buildings & Communities

Brian E. Trimble, PE, LEED AP, International Masonry Institute

Tuesday, May 16 | 1 LU/HSW | Masonry Design, Construction & Care

Pat Conway, AIA, International Masonry Institute

[Learn More and Register >>>](#)



COMMERCIAL
SOLUTIONS

WOOD • FIBERGLASS
ALUMINUM • VINYL

LEARN MORE

Contact your local team:

Chris Carpenter, CSI, CCPR | Architectural Representative
ccarpenter@pella.com | 630-257-1465 | PellaEFCOSolutions.com

Chamberlain Group - Architect and Specification Sales



The Architect and Specifier Specialist shall be responsible for the presentation of LiftMaster CEU's throughout a defined geographic region. Duties will include presentations to professional audiences, mining specification data, managing meeting and travel schedule as well as preparation of reports. Local and/or regional trend analysis in the new construction market segments for all product categories. Educate the targeted architect, engineer and specifier on the LiftMaster products by constant firm visits, scheduling and performing approved AIA CEU's for the firms' principles and associates in the form of a 'lunch and learn.' This role will require extensive travel. This full time opportunity offers full benefits and more!

TO APPLY: Please visit our website: www.chamberlaingroup.com/careers

Leadership Directory

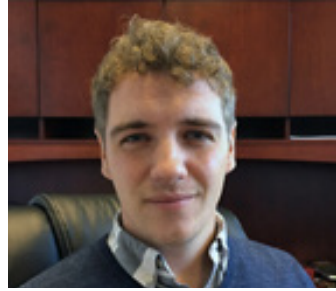
Officers and Directors July 2016 - June 2017



President
[Jeremy Olsen](#)
CSI, CCS, CCCA, AIA, LEED AP



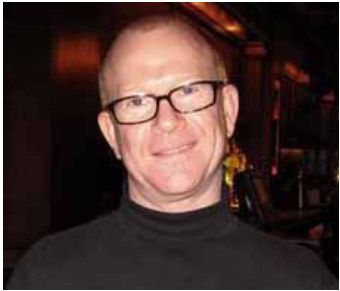
President-elect
[Melissa Gibson](#)
CSI, CCCA, LEED AP



Vice President 2018
[Peter Grotenhuis](#)
CSI, CDT



Vice President 2017
[Scott Conwell](#)
CSI, CDT, FAIA



Secretary 2017
[Stuart Berger](#)
CSI, CCS, AIA



Treasurer 2017
[Deborah Burkhart](#)
CSI, CCS, AIA, LEED AP



Membership Officer 2017
[Chris Walsh](#)
CSI, CDT, LEED GA



Director 2017
[Tim Blatner](#)
CSI, LEED AP



Director 2017
[Kira Rogatnik](#)
CSI, CDT



Director 2017
[Drew Clausen](#)
CSI



Director 2018
[Andrea Baird](#)
CSI, CCCA, AIA, P.E., LEED AP



Director 2018
[Chris Carpenter](#)
CSI, CCPR



Director 2018
[Robert Moretti](#)
MBA, CSI, CDT



Past President 2017
[Elias Saltz](#)
CSI, CCS, LEED AP



N. Central Region Director
[Matthew Nordloh](#)
CSI, CCPR, LEED GA



Executive Director
[Beth Winkler](#)

Board meetings are typically held 1 hour prior to chapter meetings and open to all members to attend. If you would like to attend, send RSVP to csichicagochapter@gmail.com

Leadership Directory Committee Members

Awards - Chapter	Chair	Jeremy T. Olsen, CSI, CCS, CCCA, AIA, LEED AP	Jeremy@daylightstudioarch.com
Awards - Institute	Chair	Elias Saltz, CSI, CCS, LEED AP	Elias@ArchiTechspec.com
Awards - Regional	Chair	Melissa Gibson, CSI, CCCA, LEED AP	mgibson@epsteinglobal.com
By-Laws	Chair	Randall A. Chapple, CSI, CCS, AIA, SE	rchapple@gpchicago.com
Certification	Co-Chair	Dan Smith, CSI, CCPR, LEED AP	Dan.R.Smith@saint-gobain.com
Certification	Co-Chair	Larry Nordin, CSI, CCS, AIA	larry.nordin@scb.com
Certification	Committee	Colin O'Donoghue, AIA, LEED AP BD+C	od.colin@gmail.com
Communications	Chair	Stuart Berger, CSI, CCS, AIA	studiob57@comcast.net
Communications	Newsletter Editor	Beth Winkler	csichicagochapter@gmail.com
Communications	News. Committee	Elias Saltz, CSI, CCS, LEED AP	Elias@ArchiTechspec.com
Communications	Website Editor	Beth Winkler	csichicagochapter@gmail.com
Communications	ECommunications	Randall A. Chapple, CSI, CCS, AIA	rchapple@gpchicago.com
Communications	Graphics	Peter W. Grotenhuis, CSI, CDT	peter@sjmallein.com
Communications	Committee	OPEN	
Continuing Education	Coordinator	Joseph A. Stypka, FCSI, CCS, FAIA	jstypka@jahn-us.com
Continuing Education	Committee	Scott Conwell, CSI, CDT, FAIA, LEED AP	sconwell@imiweb.org
Contractor Engagement	Chair	Heather Rice, CSI	hrice@Hpsubfloors.com
Contractor Engagement	Committee	Patrick J. Duffy, Jr., CSI	pduffy@abuildingproducts.com
Contractor Engagement	Committee	Scott Conwell, CSI, CDT, FAIA	sconwell@imiweb.org
Contractor Engagement	Committee	Jennifer R Friedland CSI, CDT, LEED GA	Jennifer.R.Friedland@saint-gobain.com
CSI2eye	Co-Chair	Kurt Moehlmann, CSI, CDT	rpikurt@aol.com
CSI2eye	Co-Chair	Kira Rogatnik, CSI, CDT	krogatnik@metlspan.com
CSI2eye	Committee	Alan Itzkowitz, AIA, FCSI, CCS, CCCA, NCARB, LEED AP	alan.itzkowitz@gmail.com
Finance Committee	Chair	Deborah Burkhart, CSI, CCS, AIA, LEED AP	dabdab@bus.illinois.edu
Finance Committee	Committee	Stuart Berger, CSI, CCS, AIA	studiob57@comcast.net
Historian	Chair	W. Dean Walker, CSI, CCS, AIA	deanspecs@gmail.com
Historian	Committee	Elias Saltz, CSI, CCS, LEED AP	Elias@ArchiTechspec.com
Membership	Chair	Chris Walsh, CSI, CDT, LEED GA	cwalsh@inprocorp.com
Membership	Committee	Randall A. Chapple, CSI, CCS, AIA, SE	rchapple@gpchicago.com
Membership	Committee	David O'Bryan Jr., CSI, CDT	dobryan@rustoleum.com
Membership	Committee	Missy Ruminski, CSI-EP, Affiliate AIA Chicago	Missy@tuschalleng.com
Membership	Committee	Robert Moretti, MBA, CSI, CDT	rmoretti@tremcoinc.com
Nominating	Chair	Melissa Gibson, CSI, CCCA, LEED AP	mgibson@epsteinglobal.com
Nominating	Committee	Elias Saltz, CSI, CCS, LEED AP	Elias@ArchiTechspec.com
Nominating	Committee	Jeremy T. Olsen, CSI, CCS, CCCA, AIA, LEED AP	Jeremy@daylightstudioarch.com
Nominating	Committee	Kurt Moehlmann, CSI, CDT	rpikurt@aol.com
Partners & Sponsorship	Chair	Drew Clausen, CSI	drew.clausen@owenscorning.com
Partners & Sponsorship	Committee	Scott Conwell, CSI, CDT, FAIA	sconwell@imiweb.org
Partners & Sponsorship	Committee	Peter W. Grotenhuis, CSI, CDT	peter@sjmallein.com
Programs	Chair	Timothy Blatner, CSI, LEED AP	tblatner@fitzgeraldassociates.net
Programs	Committee	Robert Moretti, MBA, CSI, CDT	rmoretti@tremcoinc.com
Programs	Committee	Andrea Baird, CSI, CCCA, AIA, P.E., LEED AP	albaird@rrj.com

Committee members continued on the next page...

Leadership Directory Committee Members (cont.)

Roundtable - Industry	Chair	Scott Conwell, CSI, CDT, FAIA	sconwell@imiweb.org
Roundtable - Industry	Committee	Matthew Nordloh, CSI, CCPR	mattn@integratingproducts.com
Roundtable - Industry	Committee	Robert Moretti, CSI, CDT	rmoretti@tremcoinc.com
Roundtable - Industry	Committee	Chris Carpenter, CSI, CCPR	ccarpenter@pella.com
Roundtable - Meet the Rep	Chair	John Birazzi, CSI, CDT	jbirazzi@kleinandhoffman.com
Roundtable - Meet the Rep	Committee	Pat Ruban, CSI	patruban10@yahoo.com
Roundtable - Meet the Rep	Committee	Kurt Moehlmann, CSI, CDT	rpikurt@aol.com
Roundtable - Specifier	Chair	Melissa Marie Gibson, CSI, CCCA, AIA, LEED AP	mgibson@epsteinglobal.com
Roundtable - Specifier	Committee	James Cross, CSI, CCS, AIA	j.cross@studiogc.com
Roundtable - Specifier	Committee	Randall A. Chapple, CSI, CCS, AIA	rchapple@gpchicago.com
Roundtable - Specifier	Committee	Larry Nordin, CSI, CCS, AIA	larry.nordin@scb.com
Roundtable - Summer Series	Chair	Jeremy T. Olsen, CSI, CCS, CCCA, AIA, LEED AP	Jeremy@daylightstudioarch.com
Roundtable - Technical	Chair	Elias Saltz, CSI, CCS, LEED AP	Elias@ArchiTechspec.com
Roundtable - Technical	Committee	Jeremy T. Olsen, CSI, CCS, CCCA, AIA, LEED AP	Jeremy@daylightstudioarch.com
Roundtable - Technical	Committee	Elaine Fitzgerald, CSI, CCS	elainefitzgerald@comcast.net
Roundtable - Technical	Committee	Andrea Baird, CSI, CCCA, AIA, P.E., LEED AP	albaird@rrj.com
Roundtable - Technical	Committee	Robert Moretti, CSI, CDT	rmoretti@tremcoinc.com
Social	Chair	Kristin Henriksen, CSI, CDT	k_henriksen14@yahoo.com
Social	Committee	Kira Rogatnik, CSI, CDT	krogatnik@metlspan.com
Social	Committee	Taylor Neill, CSI	taylorneill@marvin.com
Social - Young Professionals	Committee	Rebecca Greenberg, CSI, CDT	rgreenberg@esadesign.com
Social - Young Professionals	Committee	Noi Phonexayphova, CSI, CDT	sphonexayphova@gmail.com
Social - Young Professionals	Committee	Charles Arko, CSI, CDT	charlesarko@hotmail.com
Social Media	Chair	Holly Hirsch, CSI	Holly.Hirsch@boral.com
Social Media	Committee	Thad Goodman, CSI, CDT	thadg@nationalgypsum.com
Social Media	Committee	Wesley Sherrer, CSI	wesley.sherrer@momentive.com
Social Media	Committee	OPEN	
Student Outreach	Chair	Peter W. Grotenhuis, CSI, CDT	peter@sjmallein.com
Student Outreach	Committee	Scott Conwell, CSI, CDT, FAIA	sconwell@imiweb.org
Student Outreach	Committee	Jeremy T. Olsen, CSI, CCS, CCCA, AIA, LEED AP	Jeremy@daylightstudioarch.com
Technical	Chair	Randall A. Chapple, CSI, CCS, AIA	rchapple@gpchicago.com



New Chicago Rules Regarding Building Permit Privilege Suspension

By: Christopher E. Chwedyk, CSI, AIA

On March 29, 2017, the City of Chicago Department of Buildings (DOB) published new rules regarding the suspension of building permit application privileges and licenses, registrations, and certifications (Rules) by the department. These Rules implement Ordinance 02016-8628, amendments (Amendments) to the Chicago Municipal Code (Code) designed to increase the Building Commissioner's (Commissioner) ability to suspend building permit privileges and licenses, registrations, and certifications of those who don't follow the Codes' requirements. The new Rules became effective on April 8, 2017.

[Read full article>>>](#)

What Architects Can Learn from the Beatles

By: Bill Schmalz, CSI, CCCA, FAIA

On April 10, 1970, Paul McCartney publicly announced he was leaving the Beatles, effectively ending the group [1]. On that day, he and George Harrison were 27 years old, while John Lennon and Ringo Starr were 29 years old [2]. I mention this because it means that everything the Beatles accomplished as a group, including writing and recording many of the best rock songs ever, revolutionizing the popular music industry, and to at least some extent changing history, was done by people who were not yet 30 years old. At what I consider their peak, from A Hard Day's Night (album released July 10, 1964) through Sgt. Pepper's Lonely Hearts Club Band (released June 1, 1967) [3], their ages ranged from 21 (George in 1964) to 26 (Ringo and John in 1967).

My thinking about the Beatles' ages was sparked when a colleague sent me an online article, "Why the Millennial Architect Won't Be Your CAD Monkey," which had been posted back in July 2014, but is still relevant [4].

[Read full article>>>](#)

BuchNotes #71

The Race Underground: Boston, New York and the Incredible Rivalry That Built America's First Subway

By: Ed Buch, CSI, CCS, AIA, LEED AP

Author Doug Most's book isn't so much about a race as much as it is a chronicle of the rivalries between the men involved. Boston's subway was completed in 1897 before construction had even started in New York. The book is most importantly the story of the men who were behind the subway financing and construction in both cities during the Gilded Age of the late 19th Century. The Whitney brothers, William Sprague, William Steinway, August Belmont, and John McDonald to name a few. These men had the foresight, ingenuity, determination, and raised the money to literally change the face of large American cities forever.

[Read full article>>>](#)

The Closeout

The Twin Towers in Chicago - 165 W. Superior/167 W Erie

Submitted by: Matthew Reed | Senior Certified DuPont Tyvek Commercial Specialist | Parksit

Completion Date: March 31, 2017

Bringing masonry back to the downtown Chicago Skyline, Parksit and DuPont Tyvek recently completed two stellar projects in Chicago. A 38-story residential project at 165 W Superior, and a 40 story residential project one block away, at 167 W. Erie were recently completed. Both have employed a very attractive brick cladding on all floors, differentiating themselves from the dominant all-glass exterior populating the new Chicago architectural landscape.

165 W. Superior has a hybrid weather barrier system. DuPont Fluid Applied Weather Barrier was used on the first five floors, which are concrete for the parking structure. The upper 33 floors used DuPont Commercial wrap over exterior gypsum. This is, according to DuPont, one of the tallest structures ever to “wrap” the exterior. Proving, when installed correctly, there are no height limitations to DuPont mechanically fastened Commercial weather barrier products.

167 W. Erie used the DuPont Fluid Applied Weather



Barrier for the entire forty floor concrete structure. DuPont's 98% solids based Fluid Applied Weather Barrier allows install down to twenty-five degrees, allowing install to start and continue through our cold Chicago winter.

As compatibility is always an issue with weather barrier systems, both projects used DuPont's complete system, including peel and stick Straightflash and Flexwrap for fenestrations and penetrations, including brick ties.

The end result - two new residential towers in downtown Chicago are now completely protected against air and moisture intrusion, while providing vapor permeability for a long-lasting, forgiving system.

Project Team

Architect: Bkl Architecture, LLC

Building Envelope Consultant : CDC - Curtainwall
Design Consulting

Spec Writer: ABI Specification Consultant

General Contactor: Linn-Mathes

Installer: Illinois Masonry

[Sign up to showcase your project in *The Closeout* >>>](#)



Photo Credit: Matthew Reed, Parksit