

CHANGE ORDER

CONSTRUCTION SPECIFICATIONS INSTITUTE CHICAGO CHAPTER



BUILDING ENCLOSURE EVENT

DYNAMIC INTERFACES OF WATER-RESISTIVE BARRIERS

See page 6 to learn more.

PRESENTED BY

M. STEVEN DOGETT, PH.D., LEED AP
PRINCIPAL BUILDING SCIENTIST
BUILT ENVIRONMENTS, INC.



TUESDAY,

FEB. 25, 2020

11:15AM-3:30PM

MAGGIANO'S LITTLE ITALY,
CHICAGO

2020
February

Check Out Our New Chapter Mission Statement

See page 7.

FROM THE PRESIDENT	2
MEMBER CONNECTION	3-4
CHAPTER EVENTS	5-6
CHAPTER QUICK READS	7
CHAPTER ARTICLES	8
CSI BEYOND THE CHAPTER	9
INDUSTRY EVENTS	10

Upcoming Chapter Events

- 2/13 Technical Roundtable:** *Truth is Stranger than Fiction*
- 2/21 Meet The Reps Roundtable:** *Sound Control For Flooring*
- 2/25 Building Enclosure:** *Dynamic Interfaces of Water-Resistive Barriers*
- 3/12 CSi2eye 2020** (*Registration Closed*)
- 3/20 Industry Roundtable:** *So You Want To Publish A Book?*
- 3/31 Chapter Meeting:** *Save The Date*

Included Articles

- 8 January 2020 Chapter Meeting Recap:** *Interior Architecture: The Secrets Of A Successful Cross-Collaboration*



LEADERSHIP TEAM 2019-20

PRESIDENT

Andrea Baird
CSI, CCCA, CDT

PRESIDENT-ELECT

Brad Schwab
CSI, CDT

VICE PRESIDENT

Jennifer Friedland
CSI, CDT, LEED GA

VICE PRESIDENT

Scott Conwell
FCSI, CDT

SECRETARY

Chris Carpenter
CSI, CCPR, CDT

TREASURER

Elias Saltz
CSI, CCS, CDT

MEMBERSHIP OFFICER

Robert Moretti
CSI, CDT

DIRECTORS

Guadalupe Casimiro
CSI, CDT

Randall Chapple
CSI, CSS, CDT

Paul Fogarty
CSI, CDT

Rachel Nava
CSI, CDT

Jeremy Olsen
CSI, CCS, CCCA, CDT

Heather Rice
CSI, CDT

IMMEDIATE PAST PRESIDENT

Peter Grotenhuis
CSI, CDT

DIRECTOR - NCR

Drew Clausen
CSI

EXECUTIVE DIRECTOR

Beth Winkler



Many Opportunities to Engage with the Chapter

Andrea Baird

NCARB, P.E., BECxP, CxA+BE, CCCA, LEED AP BD+C

Our efforts from earlier in the year are starting to materialize. We officially have a mission statement for the Chapter and Foundation. I believe these mission statements reflect our values and culture as a chapter and, while challenging, was a worthwhile exercise. I hope you agree. Thank you to all who provided input.

CSI Chicago Chapter Mission Statement:

To advance the greater Chicago area design and construction community's knowledge of building information management, construction technology, and project delivery methods to improve facility performance while fostering relationships and promoting education.

CSI Chicago Foundation Mission Statement:

To support the Chicago Chapter - Construction Specifications Institutes's mission through philanthropic causes including education, service, and research.

Another project that we looked at earlier this year was examining our insurance requirements. After much research and consultation, we have increased our coverage to align with expanded activities the Chapter has taken on in the past few years.

I hope to see you all at our [February Building Enclosure Event](#) at Maggiano's. Registration is still open for the Building Enclosure Event featuring speaker Steven Doggett of Built Environments, Inc. There are several spaces still available. Note that this is an afternoon session and not at our usual Chapter meeting time.

I'm happy to announce that CSi2eye sold out early this year. This event continues to grow in popularity and provides great exposure for our chapter. Be sure to mark your calendars for upcoming social events, including our Awards Dinner & Recognition Night at Cliff Dwellers on May 20th. Our Golf Outing/Sports Day will be on June 4th in Chicago.

M2M CONNECTION
Built By Members For Members



Submit content for the Change Order Newsletter using our M2M Connection Tool Box.

CLICK TO VIEW OUR LEADERS



Member Spotlight

Brad Schwab, CSI, CDT

Brad Schwab's professional career started in marketing, evolved into sales and ended up a business owner. He started his career working at ITW Paslode in the marketing department where he worked on a team that launched the first ever cordless nail gun. He learned a lot about manufacturing & supply chain management. Afterwards, he moved into the advertising industry where he was in account management/sales for a global advertising agency for 16 years. Brad learned how to sell ideas, balance creativity with form & function and project manage. All of his past experience led to Brad's 6 year partnership with his father and brother in Schwab Group, which is an independent manufacturers rep company.

Brad's most memorable construction project he has worked on thus far is Northwestern's new athletic facility. It was the first large scale project Schwab Group was involved in and he had the opportunity to see the full process from design to finish. He learned so much through the project and also witnessed how talented his father was and how much he could learn from him.

Brad says that there are so many benefits to being a CSI Chicago member so it's tough to pick just one. The biggest benefit he says is the constant education on the construction industry and it's processes. Brad has always believed it is hard to play your best in a game if you don't know the rules and roles of the other players. CSI Chicago continues to help Brad stay on top of our ever evolving construction industry.

Membership Milestones

10 Years

Ronald Harrison, CSI, CDT

CannonDesign

Thank you to all of our members who are celebrating an anniversary with CSI Chicago this month.

Membership Milestones features members who are celebrating 5 yrs, 10 yrs, 15 yrs, 20 yrs, 25 yrs and 30+ yrs.

Renee Doktorczyk, FAIA, CSI, CCS, SCIP
Renee@ArchiTechSpec.com

ArchiTech
CONSULTING, INC.

800 E. Northwest Hwy, Ste 208
Mount Prospect, IL 60056-3457
Tel: 224.345.3450

New Chapter Members

Agnieszka Dawidziak, CSI-EP
Thomas Roszak Architecture

Eddie Dobbins, CSI, AHC
Allegion

Todd Elliott, CSI
VaproShield

Matthew Kelly, CSI
dormakaba

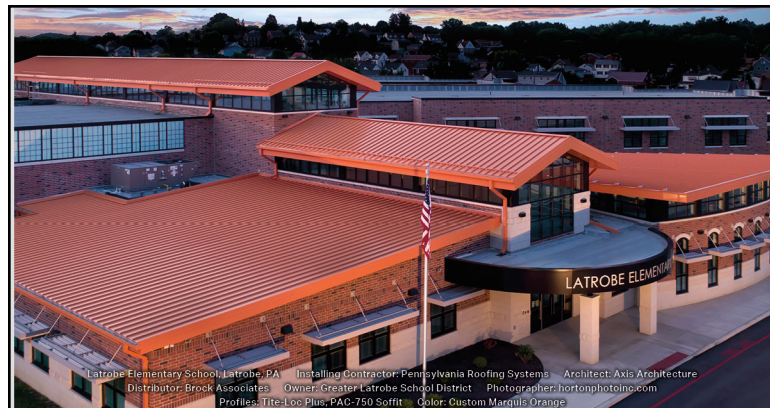
Karin Lucas, CSI
Solomon Cordwell Buenz

Eliot Phillips, CSI

Laurie Schwalb, CSI
Allegion

Anthony Sullivan, CSI

Roman Tylka, CSI
Advanced Glazing Products



Latrobe Elementary School, Latrobe, PA | Installing Contractor: Pennsylvania Roofing Systems | Architect: Axis Architecture
Distributor: Brock Associates | Owner: Greater Latrobe School District | Photographer: hortonphoto.com
Profiles: Tite-Loc Plus; PAC-750 Soffit | Color: Custom Marquis Orange



TITE-LOC PLUS
METAL ROOFING SYSTEM
Custom color: Marquis Orange

Bright Future

Petersen's Tite-Loc Plus metal roofing system in a distinctive Marquis Orange finish brightens the vision of the new Latrobe Elementary School. The 22-gauge panels complement the classic terra cotta-toned brick that clads the upper two-thirds of the school's façade.

Case study at PAC-CLAD.COM/LATROBE

PAC-CLAD.COM | INFO@PAC-CLAD.COM

IL: 800 PAC CLAD MD: 800 344 1400 TX: 800 441 8661
GA: 800 272 4482 MN: 877 571 2025 AZ: 833 750 1935



Project Showcase

Shared by: Goettsch Partners

Park Tower at Transbay, San Francisco, California

Located at the corner of Howard and Beale streets in the Transbay district of San Francisco, this commercial office tower sits across the street from the new Transbay Transit Center and just three blocks from San Francisco Bay. The 45-story tower is designed with a massing that integrates three different floor plates. Within these distinct floor plates, a series of large outdoor terraces are carved out to provide substantial outdoor tenant amenity spaces—mini “parks in the sky.”

The tower’s façade is composed of floor-to-ceiling glass and is articulated with vertical glass fins that relate to the location of the tower terraces, which occur at a three-story module. The podium façade also utilizes a series of single-floor fins to break down the scale at the pedestrian level. The fritted pattern is repeated through to the base of the building to help continue the tower articulation and materiality throughout the overall massing.

At the base of the tower is a covered 3,600-square-foot outdoor plaza with a 35-foot-high ceiling. The area is designated as privately owned public outdoor space (POPOS) that abuts both the tower’s main lobby and adjoining retail space. Along with a series of outdoor seating areas, a major focal point of this outdoor space is a large, site-specific art installation, entitled “Night Writing” by Teresita Fernandez, which is integrated into the main wall of the tower’s core.

With design features such as raised floors, natural ventilation and high-efficiency building systems, the project addresses several sustainable initiatives and is certified LEED Gold.



Photo: © Tim Griffith

CUSTOM — Your single source for Tile and Stone installation systems.



CustomBuildingProducts.com

Howard Jancy, CSI, CDT Howard.Jancy@cbpmail.net



Members On The Move



Jennifer Friedland, CSI, CDT made a move back to Saint Gobain! She is now the Mid-West Regional Manager for Vetrotech.



Heather (Yario) Rice, CSI, CDT, CCMTT has a new role as Midwest Director, Specialty Products for Maxxon Corporation. She still has Smart Concrete Technologies for testing, product representation and its WBE focus.

Please [click here](#) and fill out the *Members On The Move Form* to share your personal or professional news/achievements.

Share With Your Fellow Members

Visit our [M2M Connection Hub](#) to learn how you can be a part of the *Change Order* member newsletter by sharing your news and ideas with fellow members.

Truth is Stranger than Fiction: Lessons Learned when Translating Design Intent to Construction Reality

Technical Roundtable

Feb 13, 2020 from 12:00 PM to 1:00 PM
Lamar Johnson Collaborative, Chicago

Lessons learned from our panelists' years of experience "in the trenches" of making beautiful project designs come to life in the real world. Brief individual presentations on specific topics of interest will be followed by a free-flowing question-and-answer period.

[FULL DETAILS & REGISTRATION](#)

So You Want To Publish A Book?

Industry Roundtable

Mar 20, 2020 from 12:00 PM to 1:00 PM
Daltille Design Studio, Chicago

Chapter member Kurt Moehlmann will share his intriguing journey on how he became a published author. From the writing, editing, art work, advertising and constant stream of issues, it is not unlike our everyday jobs in the construction industry!

[FULL DETAILS & REGISTRATION](#)

Sound Control For Flooring

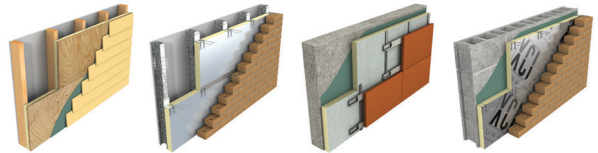
Meet The Reps Roundtable

Feb 21, 2020 from 12:00 PM to 1:00 PM
Antunovich Associates, Chicago

This roundtable will give you the opportunity to get to know local representatives and learn about product selection and their applications in the market. Participants are encouraged to come prepared with questions in this open discussion format.

[FULL DETAILS & REGISTRATION](#)

Energy Efficient Xci Polyiso



Brad Schwab • 630-772-3516
bschwab@schwabgroup.net
www.hunterpanels.com

CSI Chicago Platinum Partners



[Click here](#) to contact a local representative.

Dynamic Interfaces of Water-Resistive Barriers

Building Enclosure Event

Presented by: M. Steven Doggett, PH.D., LEED AP
Principal Building Scientist Built Environments, Inc.

Water-Resistive Barriers (WRBs) have evolved to serve compound forms and functions. Despite these advances, performance expectations still reflect over-simplistic assumptions and problematic testing methods. Interfaces with modern wall components also remain ill-defined with respect to the WRB's primary function of liquid water resistance. Industry trends toward component integration have further strained the WRB's intended role.

This two hour presentation will review new findings from experimental research and computational modeling to demonstrate performance attributes of recognized WRB systems. Moisture transport and storage will be reviewed for three dynamic interfaces: A) the exterior insulation interface; B) the substrate interface; and C) the fastener interface. Directives for industry research, testing standards, and product innovation will be discussed.

Learning Objectives:

1. Define the role of WRBs in context with key interfaces in modern wall design.
2. Apply basic building science principles to identify new challenges in WRB performance.
3. Recognize common failure mechanisms associated with exterior insulation.
4. Assign directives for improving WRB systems, testing standards, and installation practices.

Continuing Education: 2.0 AIA CES LU|HSW
2.0 CPHC CEUs

Attendees can stop by sponsor tabletops to be eligible to win a \$100 Mastercard gift card at the event!

Event Sponsors



EnergyShield
Continuous Wall Insulation



Date: Tuesday, February 25, 2020, 11:15am-3:30pm

Location: Maggiano's Little Italy, Chicago

Cost:

\$50 Members & Industry Partners (see below list)
\$60 Nonmembers

Timeline:

11:15am registration begins and sponsor tables open
11:45am lunch
12:30pm presentation begins (2 hour lecture + Q&A + breaks)
3:30pm event concludes

Registration: Required by Tuesday, February 18, 2020.

Parking: Valet parking (Cash Only) is available at Maggiano's; Street Parking upon Availability; and Grand Plaza Garage (29. E Ohio Street)

FULL DETAILS & REGISTRATION

EVENT SPONSORSHIP OPPORTUNITIES



Steven Doggett, Ph.D., LEED AP is the Principal Scientist and founder of Built Environments, Inc. an architectural & building science consulting firm specializing in building enclosure design and research. His background includes extensive field experience with complex building enclosure failures, particularly those involving air, heat, and moisture transport. He merges this experience with innovative design practices to assist multi-stakeholders achieve more resilient, higher-performing buildings. Dr. Doggett is actively engaged in enclosure design, assembly and material research, and building simulations involving computational fluid dynamics, 3-D thermal modeling, and hygrothermal modeling. Dr. Doggett is the former chair of the Minnesota Building Enclosure Council.

Industry Partners



AIA
Chicago



Building Enclosure Council
CHICAGO



STRUCTURAL ENGINEERS ASSOCIATION OF ILLINOIS

New Mission Statement For Chapter

The Board of Directors approved the chapter's new mission statement at the January 21, 2020 board meeting. The new mission statement is:

To advance the greater Chicago area design and construction community's knowledge of building information management, construction technology, and project delivery methods to improve facility performance while fostering relationships and promoting education.

Want To Get More Involved In CSI Chicago? Now Is The Time.

President-Elect Brad Schwab and the nominating committee are developing the 2020/2021 Board Slate and Committees. If you are interested in volunteering your time and leadership skills to further the chapter's mission please reach out to Brad at bschwab@schwabgroup.net or fill out our [committee connection form](#).

Student Scholarship Deadline Extended to Feb 5

Each year the CSI Chicago Foundation awards up to three Chicago area architectural students with a scholarship ranging from \$500 - \$1,000 each for their exceptional design efforts. All applications are due by February 5, 2020. Click the below button for full scholarship competition details.

LEARN MORE

The Chapter Helps Develop Future Leaders

The University of Illinois at Chicago hosted the regional [Future Cities Competition](#) event on Sat., Jan. 18, 2020. CSI Chicago partnered with the competition again this year by donating support money from the CSI Chicago Foundation and donating our members time to judge the competition. Thank you to CSI Chicago Members Paul Fogarty and Demetria Boatwright for volunteering your time to be a judge. [View the 2020 Future Cities winning teams](#).

Donate to the CSI Chicago Foundation

CSI Chicago Gold Partners

ArchiTech
CONSULTING, INC.

VCI
HUNTER
CONTINUOUS INSULATION

team

[Click here](#) to contact a local representative.

Creating Value.

Reducing Risk.

Where Design and
Construction Meet.

**CON
SPEC
TUS**

*A Full Suite of
Industry-Leading
Capabilities:*

*Systems and Performance
Documentation
Construction Specifications
Risk & Quality Advisory*

Conspectus, Inc.
Elias Saltz, CSI, CCS
Chicago, IL
609 628 2390
esaltz@conspectusinc.com
www.conspectusinc.com

January 2020 Chapter Meeting Recap: Interior Architecture: The Secrets Of A Successful Cross-Collaboration

Written by: Brad Schwab, CSI, CDT

90+ attendees gathered on Tuesday, January 21, 2020 at East Bank Club in Chicago for our January Chapter Meeting. It was our first chapter meeting of the new year and provided a great opportunity for networking and knowledge sharing.

The night lead off with our President Andrea Baird welcoming our members and guests. Andrea recognized our 16 new members since the last chapter meeting and that the membership is sitting strong at 307 members. She also shared the Chapter's new mission statement that was just approved by the board. (See Quick Reads on [page 7.](#))



Andrea also announced that the Chapter is in the process of developing the 2020/2021 Board Slate and Committees and if any members are interested in getting more involved to contact President Elect Brad Schwab (bschwab@schwabgroup.net). She also highlighted two of our upcoming premier events [2020 CSi2eye](#) and [February Building Enclosure Event](#). The manufacture line up is set and the deadline for design professionals to register for CSi2eye was that week. Our Building Enclosure Event is on Tuesday February 25, 2020 and our speaker will be Steven Doggett from Built Environments Inc. who will be presenting on Dynamic Interfaces of Water Resistive Barriers. Lastly, Andrea mentioned that [Student Scholarship](#) applications are due Wednesday, February 5.

Shana Kim, Program Committee member then introduced our speaker for the night Patricia Rotondo, IIDA. Patricia is the Senior Principal and Director of Interior Design at Antunovich Associates. Patricia leads and continues to grow the firm's Interior Design practice, bringing unique creativity and concept-based design approach to deliver forward-thinking designs and guiding client and team collaborations with the firm's longstanding architectural excellence. Patricia presented Interior Architecture: The Secrets of a Successful Cross-Collaboration. Attendees learned the following:

1. What an interior designer is, what they do and how their role is key to occupant comfort in a space.
2. How interior designers effectively collaborate with project team members including in-house architects, associate architects, specifiers, consultants, and manufacturer's representatives.
3. How interior designers can collaborate with landscape architecture and be involved in exterior placemaking.
4. How interior designers implement design strategies to work within budgets and improve return on investment (ROI) for project stakeholders.

Thank you to everyone who attended to make this another successful Chapter Meeting event. Special thanks to Patricia Rotondo and our tabletop sponsors – Behr Process Corp., dormakaba, USA, Inpro, Oval Fire Products, and Terrazzo & Marble Supply. See photos from our event [here](#).



Introducing Insulated Masonry Veneer Systems

Fully-integrated exterior cladding systems with a continuous air and water-resistive barrier and insulation for superior performance. Insulated Masonry Veneer Systems feature BASF MaxGrip Veneer Mortar, a high-strength, specially-formulated setting bed mortar used to adhere natural and manufactured stone, tile, and thin brick veneer.

Learn more at www.senergy.basf.com or contact your local BASF representative, David Meyers at david.meyers@basf.com or 630-423-1980.

© 2019 BASF Corporation. All rights reserved.

Jeff M. Diqui
Director, Industry Development
and Technical Services

Office: 630-396-7141
Cell: 630-606-8220
jdiqui@imiweb.org
2140 W. Corporate Drive
Addison, IL 60101

team
UNION MASONRY CRAFTWORKERS
CONTRACTORS & CONSULTANTS
**INTERNATIONAL
MASONRY
INSTITUTE**
www.imiweb.org

IFC 14

Certification Exam Preparation - You're Not Alone!

News From CSI National

"By failing to prepare, you are preparing to fail."
-Benjamin Franklin

CSI Certification Exams open for early registration on February 19. Exams will be held for CDT®, CCS, and CCCA. But it is never too late to start studying and preparing.

Prep materials are available through the [CSI Bookstore](#).

In addition, upon registering for your exam, virtual study groups are included in your registration! More information on these opportunities will be included after you sign up.

PURCHASE PREP MATERIALS

Spring 2020 Certification Registration for CDT®, CCS, and CCCA

Exam Window: May 4 – June 5, 2020

Registration Opens February 19, 2020

CERTIFICATION OVERVIEW

Volunteers for Certification Needed

News From CSI National

Certification Exam Reviewers for the CCS and CCCA (IMMEDIATE NEED) 3-6 hours of your time. Volunteers may not teach exam prep classes during 2020 – 2023 and you must hold the CCS or CCCA. Contact Monica Occhetti at mocchetti@csinet.org for call dates.

Certification Committee Members - 1 year term
Fundamentals of Specifying Knowledge Experts - 5 mo. term
Construction Specifications Practice Guide Author Team - 6mo.
Study Group Co-Leaders for CDT - 4 month term
Study Group Co-Leaders for CCCA - 4 month term
Study Group Co-Leaders for CCS - 4 month term
Specifying Practice Community Co-Leaders - 1 year term
Project Delivery Practice Community Co-Leaders - 1 yr term

North Central Region Conference Save the Date

Events From CSI NCR

Flint Hills Chapter will be hosting the 2020 North Central Region Conference on April 30 - May 2, 2020 in Lawrence, Kansas. Save the date!

LEARN MORE

MEET THE NEW
CLASS IN FIBERGLASS.

ENGINEERED PRODUCT
FOR HIGH-RISE BUILDINGS

SUPERIOR PERFORMANCE IN
STRENGTH AND DURABILITY¹

2.4X MORE ENERGY-EFFICIENT THAN
THERMALLY BROKEN ALUMINUM²

WINDOWS • DOORS • STOREFRONTS • WINDOW WALLS

Single-Source Solutions at a Competitive Price. From Pella.

Envisioning a luxury, suburban-meets-urban experience, the development team looked to Pella® Impervia® large combination fiberglass windows. Their exceptional durability meets the rigorous performance requirements of the building while providing views that maximize daylight without compromising energy efficiency.

One Southdale Place • Edina, MN
Architect: BKV Group
General Contractor: Kraus Anderson
Owner: StuartCo



COMMERCIAL

¹ In testing performed in accordance with ASTM testing standards, Pella's Duracast® fiberglass composite has displayed superior performance in strength, ability to withstand extreme heat and cold, and resistance to dents and scratches.

² U-Factor of Duracast frame is 2.4 times greater than that of thermally broken aluminum when compared in thermal testing.

© 2018 Pella Corporation

Chris Carpenter, CSI, CCPR
Architectural Representative
630-675-4750
ccarpenter@pella.com

BLUE LINE
BUILDING ★ PRODUCTS

Independent Manufacturers Rep

"The Right Product for the Right Application"

Morin®

A Kingspan Group Company

FUNDERMAX®

for people
who create



www.Blueinebp.com

Matt Martino
773.251.0066

mmartino@blueinebp.com

Laboratory & Field Exterior Enclosure Performance Testing

BEC Chicago

February 12, 2020, 12:00-1:30pm

Gensler, Chicago

Discuss best practices for preparing and performing field testing related to windows, window walls, curtainwalls and including air barriers. Various test procedures will be discussed, and guidance on how to achieve the most effective testing protocol based on the extensive experience of the presenters ranging from testing various fenestration systems, but also forensic evaluations identifying probable cause(s) of failure.

[FULL DETAILS](#)

Chicago Trade Show and Symposium

Structural Engineers Association of Illinois

March 6, 2020 - 7:00am to 11:00am

University Club of Chicago

SEAOI is pleased to announce the 28th Annual Chicago Trade Show and Symposium. The event provides a forum for forum for engineers to interact with trade professionals and to learn from informative presentations. The event provides ample time to interact with up to 20 exhibitors.

CSI Member Discount Code For Member Rate: CTSSCSI

[FULL DETAILS](#)

FIRESTOPPING CONSIDERATIONS FOR MASONRY WALLS

International Masonry Institute

February 20, 2020, 11:30-1:00pm, IMI, Addison ~or~

February 21, 2020, 11:30-1:00pm, AIA Chicago, Chicago

This presentation will discuss all aspects of a fire penetrations, coordination, and dynamic head-of-wall fire stopping joint and explain how to calculate, choose, and specify the correct head-of-wall fire stopping tested assembly(s) and further examine and understand the documentation that comes with a tested fire joint system.

[FULL DETAILS: FEB 20](#)

[FULL DETAILS: FEB 21](#)

Architectural Sales Consultant Position

Job Opportunity with Allegion

The Architectural Consultant will prospect new architectural relationships to promote our specification services for division 8 and division 28 business by conducting AIA security solution presentations to architects and the design build (contractor) community, maintaining relationships through technical support and guidance, and following specifications through the full sales cycle to final closing of the opportunity.

[FULL DETAILS](#)

CSI Chicago Silver Partners



[Click here](#) to contact a local representative.

MAPEI's warranted waterproofing solutions for balconies

Issues:
Weather, salts, efflorescence

Solutions:
Frost/thaw- and submersion-resistant mortars, efflorescence-resistant grouts, expansion joints and a Mapethene waterproofing system

Balconies can be challenging environments for tile or stone installations – whether over occupied or unoccupied space.

MAPEI offers waterproofing systems solutions from the substrate up. Best of all, these solutions qualify for MAPEI's Best-Backed™ system warranty, giving architects peace of mind when specifying MAPEI products.

For more information, visit www.mapei.com or call 1-800-992-6273.

- Concrete
- Mapebond™ 700, Mapebond 710 or Mapebond 720 adhesive
- Mapethene™ HT or Mapethene LT sheet waterproofing
- Mapedrain™ 30, Mapedrain 35 or Mapedrain 50 drainage composite
- Modified Mortar Bed (thick-bed and render mortar)
- Mapelastic® 315 (with Fiberglass Mesh) or Mapelastic AquaDefense waterproofing membrane
- Kerabond™ T / Keralastic®, Kerabond / Keralastic™ or Granirapid® mortar system
- Ceramic or stone tile
- Ultracolor® Plus FA or MAPEI Flexcolor® CQ grout
- Mapesil™ T 100%-silicone sealant
- UltraCare™ Penetrating Plus Stone, Tile & Grout Sealer penetrating sealer