

# CHANGE ORDER

CONSTRUCTION SPECIFICATIONS INSTITUTE CHICAGO CHAPTER

## Social Event

### HOLIDAY PARTY & FUNDRAISER

Mon., Dec. 9, 2019  
5:30-8:30pm

Erie Cafe  
536 W. Erie Street  
Chicago, IL 60654

NOW  
ACCEPTING  
RAFFLE &  
SILENT AUCTION  
ITEMS

See page 4 to learn more.

2019  
*December*

## 2020 CDT Exam Study Class

Register today and take the first step to elevating your career in 2020.

Details on page 6.

FROM THE PRESIDENT	2
MEMBER CONNECTION	3
CHAPTER EVENTS	4-6
CHAPTER QUICK READS	7
CHAPTER ARTICLES	8-10
CSI BEYOND THE CHAPTER	11
INDUSTRY EVENTS	12

## Upcoming Chapter Events

- 12/05** Technical Roundtable: CRCA and The New Roofing Energy Codes
- 12/09** Social Event: Holiday Party & Fundraiser
- 1/06** Certification Preparation: CDT Exam Study Class
- 1/21** Chapter Meeting: Interior Architecture: The Secrets of a Successful Cross-Collaboration
- 2/25** Building Enclosure: Save The Date
- 3/12** CSi2eye 2020: Design/Construction Professionals Apply Now

## Included Articles

- 8** November 2019 Chapter Meeting Recap: ABAA Research Initiatives And Impacts On Specifications
- 9** What Is an Architect?



## LEADERSHIP TEAM 2019-20

### PRESIDENT

**Andrea Baird**  
CSI, CCCA, CDT

### PRESIDENT-ELECT

**Brad Schwab**  
CSI, CDT

### VICE PRESIDENT

**Jennifer Friedland**  
CSI, CDT, LEED GA

### VICE PRESIDENT

**Scott Conwell**  
FCSI, CDT

### SECRETARY

**Chris Carpenter**  
CSI, CCPR, CDT

### TREASURER

**Elias Saltz**  
CSI, CCS, CDT

### MEMBERSHIP OFFICER

**Robert Moretti**  
CSI, CDT

### DIRECTORS

**Guadalupe Casimiro**  
CSI, CDT

**Randall Chapple**  
CSI, CSS, CDT

**Paul Fogarty**  
CSI, CDT

**Rachel Nava**  
CSI, CDT

**Jeremy Olsen**  
CSI, CCS, CCCA, CDT

**Heather Rice**  
CSI, CDT

### IMMEDIATE PAST PRESIDENT

**Peter Grotenhuis**  
CSI, CDT

### DIRECTOR - NCR

**Drew Clausen**  
CSI

### EXECUTIVE DIRECTOR

**Beth Winkler**



## The Season for Reflection and Giving

### Andrea Baird

NCARB, P.E., BECxP, CxA+BE, CCCA, LEED AP BD+C

Some aspects of leading a professional organization can be mundane but necessary. The Board has been working hard on several initiatives behind the scenes, including reviewing and updating our insurance policies, defining how the Chapter will interface with the new Foundation, and defining a mission statement. Surprisingly, the Chapter has been operating without a mission statement specific to our Chapter. This has created a great opportunity for us to reflect on our objectives as an organization to inform future decision-making. In addition to advancing building information and education, CSI Chicago has a rich culture of information sharing, fostering relationships across the building and design community, and community service, all of which we want to have reflected in our mission statement. Once finalized, the Chapter bylaws will be updated to include our new mission statement. We plan to introduce it at our January chapter meeting.

The Board and committees have also been working on some fun things, including our [Holiday party](#) next week. Our holiday party is an opportunity to connect with the CSI community in a festive and relaxed atmosphere. We will be fundraising for the foundation, so please arrive in a spirit of giving.

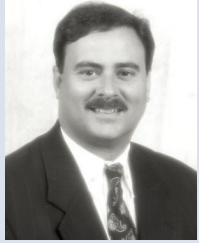
Happy Holidays!

**M2M** CONNECTION  
Built By Members For Members



Submit content for the Change Order Newsletter using our M2M Connection Tool Box.

CLICK TO VIEW OUR LEADERS



## Member Spotlight

**Dennis Hacker, CSI, CCS, CCCA, CDT, AIA, LEED AP, USGBC**

As the son of a General Contractor, Dennis Hacker learned how to finish concrete before learning how to specify a mix design. One could say he was born with construction in his blood. An Ohio State University graduate, Dennis enjoyed 27 years of writing specifications with Fanning Howey, almost exclusively K-12 education projects, before deciding a change was needed. He recently joined Skidmore, Owings, & Merrill as a Specifications Specialist. Joining SOM in Chicago is a fulfillment of a childhood dream. Growing up in Northern Indiana, he visited Chicago on several occasions and was enamored with much of the architecture.

Dennis has been a valuable member of CSI since 1987 and joined the Chicago chapter in October of 2019. He was encouraged to join CSI in the 80's by a mentor. The mentor explained there was a lot of value in CSI and he would always get back more than he would give. This has been very true. As President of both the Cleveland and Columbus, Ohio chapters, he has made business relationships that have been very valuable and many have become lifetime friends

Dennis enjoys working as part of an integrated team. His most memorable was when he worked on a project where the Owner wanted to see how much they could reduce operating costs. We (the team) were able to reduce operating costs by over 40% making the Owner very happy and being part of the team effort was very satisfying. This is greatly attributed to the fact that he values being a good listener.

In his spare time, Dennis enjoys reading business management books, golfing (but he notes he isn't winning any tournaments with his skills), and cooking.

## Members On The Move



**Mike Rickerson, CSI** recently accepted a position with Rmax Insulation, a Sika Company. Rmax manufactures high-quality, polyiso-based wall, roof and specialty insulation products for commercial and residential applications.

Please [click here](#) and fill out the Members On The Move Form to share your personal or professional news/achievements.

## Share With Your Fellow Members

Visit our [M2M Connection Hub](#) to learn how you can be a part of the Change Order member newsletter by sharing your news and ideas with fellow members.



## Member Spotlight

**Paul Sowacke, CSI**

Paul Sowacke has been in building and construction for most of his life. He started in grade school as his father's "willing apprentice" and has held positions as an individual contributor in sales, several sales leadership roles including Director and VP roles. He is currently the Territory Sales Manager for Masonite Architectural. One may think he loves sales!

He joined CSI Chicago in 2018 to network with other industry professionals. The biggest benefit of joining CSI was meeting people with varying backgrounds and experience levels as he enjoys learning from others and helping others when he can.

Most recently, he had the pleasure of working on the new Hillsdale College chapel that used Masonite stile and rail doors from their Harring brand. It was memorable because of the sheer excellence demanded by the Architect and ownership where everything was created in an "old school" method including the limestone columns that supported the structure of the building. In addition to that project, this longtime Bears fan had the opportunity to be involved in the remodel of Soldier Field which allowed him access to the facility that most people will never see.

Aside from his love of all things construction, Paul enjoys golf despite his lack of ability to practice to better his skills; yard work and working around the house, it provides a sense of accomplishment; and surprisingly, he loves the television series 'Impractical Jokers'.

He offers this piece of his advice to developing construction professionals, "Don't over promise and do what you say you are going to do. If you do what you say you will, you'll outpace 70% of the competition."

## New Chapter Members

**Michael Thill, CSI-EP**  
*OWA USA Corporation*

## New Chapter Members

**30+ Years**  
**James Harbacek, CSI, CDT (36 yrs)**  
*Skidmore, Owings & Merrill LLP*

*Thank you to all of our members who are celebrating an anniversary with CSI Chicago this month. Membership Milestones features members who are celebrating 5 yrs, 10 yrs, 15 yrs, 20 yrs, 25 yrs and 30+ yrs.*

## Holiday Party & Fundraiser Social Event

Join CSI Chicago on Monday 12/9/19 for our annual holiday party and fundraiser. There will be great food, drinks, raffle prizes, a silent auction and of course holiday cheer.

### Holiday Raffle & Silent Auction Benefits CSI Chicago Foundation

A holiday raffle and silent auction will be held at the holiday party and all proceeds will benefit the [CSI Chicago Foundation](#). Past prizes included sports tickets, wine, gift cards, chocolate, sports swag, lobsters and more!

**Raffle tickets:** \$5 per ticket or 5 tickets for \$20 at the door of the event. All winners will be announced towards the end of the event.

**Silent Auction:** Bidding will take place at the event. All winners will be announced towards the end of the event.

[See confirmed silent auction items.](#)

**Payment Options:** Cash, check, or credit card



**Date:** Monday, December 9, 2019, 5:30-8:30 PM

**Location:** Erie Cafe, 536 W. Erie Street, Chicago, IL

**Cost For Dinner & Program:** (includes appetizers & dinner)

CSI Chicago Members \$40

Nonmembers \$50

**Register by:** Wednesday, December 4, 2019

### FULL DETAILS & REGISTRATION

### EVENT SPONSORSHIP OPPORTUNITIES

#### Contribute a raffle prize or silent auction item!

Help us with our fundraising efforts by contributing a raffle prize. All sizes of contributions are appreciated! All contributors will be recognized on the prize display table and in our holiday party event recap. Let us know about your bring along item or contribute prize money on the registration link.

Three ways to contribute:

1. Bring a raffle prize to the event. (suggested value \$25-\$200).
2. Bring a silent auction item to the event. (suggested value of \$200+).
3. Contribute money through the event registration link and we will personally shop for raffle prize(s).

### Event Sponsors

**ASSA ABLOY**  
Opening Solutions



## CSI Chicago Platinum Partners

**Senergy**

**BEHR**

**BLUE LINE**  
BUILDING \* PRODUCTS

**CON  
SPEC  
TUS**

**CUSTOM**  
TILE INSTALLATION SYSTEMS

**MAPEI**

**Oldcastle BuildingEnvelope**

**DuPont™  
Tyvek®**  
distributed by Parksite

**Pella** COMMERCIAL

**PAC-CLAD**  
PETERSEN  
a CRILUX COMPANY

**BUILDING TRUST**

**Sika**

**SMARTci**  
SMARTER BY DESIGN. PROVEN BY PERFORMANCE.

[Click here](#) to contact a local representative.

## Interior Architecture: The Secrets of a Successful Cross-Collaboration Chapter Meeting

Interior designers create environments that address occupant welfare, which requires consideration of complex physical, mental, and emotional needs. It takes craft; it takes expertise; and it takes a village to create these spaces. The cross-collaboration between disciplines includes analysis, planning, design documentation, and management of complex interior environments in compliance with building design, construction, fire, life-safety and energy codes, industry standards, and regulations. This presentation will provide a comprehensive discussion on what interior designers do beyond selecting color and fabrics and review how they work with teams to create successful and profitable projects.

Registration required by January 14, 2020.

[FULL DETAILS & REGISTRATION](#)

[EVENT SPONSORSHIP OPPORTUNITIES](#)

**Date:** Tuesday, January 21, 2020, 5:00-8:00 PM

**Location:** East Bank Club, Chicago

**Cost For Dinner & Program:**

CSI Chicago Members are Complimentary  
Nonmembers \$60



**Patricia Rotondo, IIDA**  
**Senior Principal | Director of Interior Design**  
**Antunovich Associates**

As a designer with over two decades of experience, Patricia joined Antunovich Associates as Senior Principal and Director of Interior Design. Patricia leads and continues to grow the firm's Interior Design practice, bringing unique creativity and concept-based design approach to deliver forward-thinking designs and guiding client and team collaborations with the firm's longstanding architectural excellence. She has been responsible for developing design concepts and space analyses for significant projects, creating thoughtfully designed destinations, including hotels and resorts, multi-family communities, government buildings, mixed-use, residential, senior living communities and higher education clients throughout the country and the globe.

Patricia was the recipient of the 2018 IIDA Member of the Year Award.

## CSi2eye 2020

Technical Education Event

### One-On-One Technical Education Event Build Relationships Through Knowledge Sharing

CSi2eye is a high-level technical education event. Through pre-arranged eye-to-eye 20 minute scheduled meetings, CSi2eye provides a platform for top decision makers from Chicago design & construction firms to meet with technical experts from a variety of manufacturers.

**Date:** Thursday, March 12, 2020

**Location:** East Bank Club, Chicago

[FULL DETAILS](#)



## Design & Construction Team

By participating in this event, you will be introduced to new product and system solutions.

CSi2eye is a complimentary event with limited space for design and construction professionals who are responsible for selecting and specifying materials and are committed to continual learning and staying up to date on products, applications, and resources available today. If you are you are an architect, specifier, general contractor, project manager, consultant, owner's representatives, etc., this event is for you.

**Cost:** Complimentary

**Sessions:** Choose half or full day attendance

**Morning Meetings:** 9:00am - 12:00pm

**Afternoon Meetings:** 1:30pm - 4:30pm

Breakfast, Lunch, & Reception open to all attendees.

**Applications:** Apply early to ensure your seat at this popular event.

[DESIGN & CONSTRUCTION TEAM  
DETAILS & APPLICATION](#)

*Manufacturer applications are now closed. Participating manufacturers will be announced in December.*

## CRCA and The New Roofing Energy Code

### Technical Roundtable

December 5, 2019 from 12:00 PM to 1:00 PM

Perkins+Will, Chicago

**Presented by: Bill McHuch, Executive Director at CRCA**  
The CRCA Participated in the development of the Illinois, Chicago and ICC's International Energy Conservation Codes. Don't miss this program on the new requirements - and unique to Illinois - for low sloped roofing and some residential occupancies, plus requirements for air barrier.

### FULL DETAILS & REGISTRATION

**CRCA and The New Roofing Energy Codes**

Thursday, December 5, 2019  
12:00 PM to 1:00 PM (CT)

Perkins+Will  
410 N Michigan Ave  
Chicago, IL 60611



Technical Roundtable



## CDT Exam Study Class

### Certification Preparation

**Class Dates\***: Mondays, Jan 6 - Mar 23, 2020, 5:30 - 8:00pm

**Location**: HACIA 650 W. Lake Street, Suite 415, Chicago

Construction Specification Institute's Construction Documents Technology (CDT) Certification provides foundational training in construction process, roles and responsibilities, and construction documentation for architects, contractors, contract administrators, specifiers, and manufacturers' representatives for decades. This study class will provide you a better understanding of how projects develop from conception to delivery and the documentation involved while helping you prepare for the CDT exam.

The class provides a conceptual understanding of the entire construction process, and concrete skills in construction documentation development and administration, specification writing and enforcement, product research and sourcing, communication with the design and contracting teams. Each class is taught by industry leaders from both the A/E and Product Representative Community. Classes include power point presentation followed up with quizzes that will help to reinforce the content of the session. The last class includes a practice exam to replicate the CDT exam. Attendees get exposure to industry leaders as teachers that are willing and able to answer questions.

**Continuing Education**: 15.0 AIA/CES  
(Must attend at least 8 classes)

**Class Fee**: \$150 to CSI Chicago members,  
\$300 for non-members

\*Class runs for 11 weeks. Schedule posted is for 12 weeks to allow for one cancellation due to weather or other unforeseen circumstances.

### FULL DETAILS & REGISTRATION

### CLASS SPONSORSHIP OPPORTUNITY



**TUESDAY, FEB. 25, 2020**  
MAGGIANO'S LITTLE ITALY  
CHICAGO, IL 60654

**DYNAMIC INTERFACES OF WATER-RESISTIVE BARRIERS**

PRESENTED BY  
**M. STEVEN DOGGETT, PH.D.**  
PRINCIPAL BUILDING SCIENTIST  
BUILT ENVIRONMENTS, INC.



**Building Enclosure Save The Date**



**Oldcastle BuildingEnvelope®**

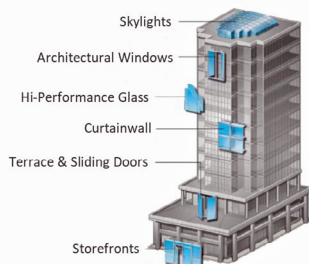
*Engineering your creativity™*

Patrick Duffy, CSI, CCPR  
Local Representative

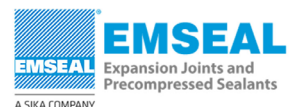
Oldcastle BuildingEnvelope®  
283 Inverway  
Inverness, IL 60067

Direct Phone (847) 705-9190  
Mobile Phone (708) 707-9190  
Fax (847) 705-0940

pduffy@abuildingproducts.com  
www.obe.com



## Class Sponsors



## New M2M Tool – Submit Programming Ideas

Share your educational program ideas with us for consideration by using the new Program Submission M2M Tool. If you have a program topic idea, know a great speaker, or have a tour idea please share them by submitting the program suggestion form today. Visit the M2M Connection Hub today to learn more and submit.

[M2M CONNECTION HUB](#)

## Student Scholarship Competition Opens



Each year the CSI Chicago Foundation awards up to three Chicago area architectural students with a scholarship ranging from \$500 - \$1,000 each for their exceptional design efforts. All applications are due by January 15, 2020. Click the below button for full scholarship competition details.

[LEARN MORE](#)

## CSI Chicago Holiday Hours

It's the holiday season and just like you CSI Chicago will be taking some much needed time off to spend time with family and friends. The CSI Chicago office will be closed from December 24, 2019 to January 1, 2020.

## Don't Be Shy... Submit Your Member Spotlight

Whether you are a rookie or a veteran member we want to turn the spotlight on you so members get to know you better. If you are interested in being spotlighted please submit a member spotlight form today. Visit the M2M Connection Hub today.

[M2M CONNECTION HUB](#)

## CSI Chicago Gold Partners

**ArchiTech**  
CONSULTING, INC.

**VCI**  
HUNTER  
CONTINUOUS INSULATION

**team**

[Click here](#) to contact a local representative.



7/8-in. perforated corrugated panels overlay the graphic

## Fun Flexibility

"It's a fun material because it's very flexible to design with and doesn't drive costs up."

~Joe Buehler, AIA, LEED AP BD+C, TEAM A

Case study at [PAC-CLAD.COM/MOVINGEVEREST](http://PAC-CLAD.COM/MOVINGEVEREST)

[PAC-CLAD.COM](http://PAC-CLAD.COM) | [INFO@PAC-CLAD.COM](mailto:INFO@PAC-CLAD.COM)

IL: 800 PAC CLAD MD: 800 344 1400 TX: 800 441 8661  
GA: 800 272 4482 MN: 877 571 2025 AZ: 833 750 1935

**PAC-CLAD**  
PETERSEN  
A CARLISLE COMPANY

## November 2019 Chapter Meeting Recap: ABAA Research Initiatives And Impacts On Specifications

Written by: Brad Schwab, CSI, CDT

75+ attendees gathered on Tuesday, November 19, 2019 at East Bank Club in Chicago for our November Chapter Meeting. It was another great night of networking and knowledge sharing. The night lead off with our President Andrea Baird welcoming our members and guests. Andrea recognized our 4 new members since the last chapter meeting and reviewed our [upcoming events](#). She also highlighted that [2020 CSI2eye](#) manufacturer applications are closing Friday 11/22/19 and announced our February [Building Enclosure Event](#) speaker will be M. Steven Doggett from Built Environments Inc.

Andrea then introduced our speaker for the night Sarah K. Flock, NCARB, BECxP, CxA+BE. Sarah is the Co-Chair of the Research Committee for the Air Barrier Association of America (ABAA) as well as a Principal at Raths, Raths & Johnson, Inc. Sarah presented updates on the Air Barrier Association of America's (ABAA) research initiatives and the impacts on specifications. ABAA has identified a need for research to assess moisture detection approaches and the evaluation methodologies to employ. Sarah discussed the research underway, as well as the background and context of the current practices related to air and water barriers. Attendees learned the following:

- The history of Water Resistive Barriers (WRBs) and current trends.
- ABAA research and testing status including for fastener penetrations and pull adhesion.
- Current and proposed test methods.
- Practical approaches to improving specifications using currently available test standards.

Thank you to everyone who attended to make this another successful Chapter Meeting event. Special thanks to Sarah K. Flock and our tabletop sponsors – Air Barrier Association of America (ABAA); Carlisle Coating and Waterproofing / A & D Products, LLC; Parex USA, Inc., a subsidiary of Sika USA; PROSOCO R-Guard

See photos from our event [here](#).



Thank you to Sarah Flock for your presentation on ABAA's Research Initiatives And Impacts On Specifications at our Chapter Meeting.





**Senergy**<sup>®</sup>

We create chemistry



**More than Metal™** Music City Motor Cars – Nashville, TN

**Wall systems from BASF help your project succeed.** With energy efficiency, fire performance, and cost benefits far superior to Metal Composite Materials (MCM) - Music City Motor Cars is a proven example. By incorporating BASF Metallic Effects on a BASF Continuously Insulated (CI) wall system, this project complied with building code requirements and provided a look that exceeded the architect's expectations.

**Design Flexibility. Code Compliance. Performance.** Let BASF help with the building science, so you can focus on designing the building your clients desire.

**Contact David Meyers (david.meyers@basf.com, 630-423-1980)**

BASF Corporation - Wall Systems | Jacksonville, FL | P: 800.221.9255 | www.senergy.basf.com



**Creating Value.**

**Reducing Risk.**

**Where Design and Construction Meet.**



*A Full Suite of Industry-Leading Capabilities:*

- Systems and Performance*
- Documentation*
- Construction Specifications*
- Risk & Quality Advisory*

**Conspectus, Inc.**  
 Elias Saltz, CSI, CCS  
 Chicago, IL  
 609 628 2390  
[esaltz@conspectusinc.com](mailto:esaltz@conspectusinc.com)  
[www.conspectusinc.com](http://www.conspectusinc.com)

## What Is an Architect?

Written By Jackie Craven | Reprinted from ThoughtCo.



**Recommended by: Nolan Day, CSI, CDT**

An architect is a licensed professional who organizes space. The art world may define “space” differently than the scientific world (where does space begin?), but the architecture profession has always been a combination of art and science.

Architects design houses, office buildings, skyscrapers, landscapes, ships, and even entire cities. The services offered by a licensed architect depend on the type of project being developed. Complicated commercial projects are accomplished with a team of architects. Sole proprietor architects—especially architects just starting out on their own—will specialize and experiment with smaller, residential projects. For example, before Shigeru Ban won the coveted Pritzker Architecture Prize in 2014, he spent the 1990s designing houses for wealthy Japanese patrons. Architectural fees are based on the complexity of the project and, for custom homes, may range from 10% to 12% of the total construction costs.

### Space Design

Architects organize different types of spaces. For example, architect Maya Lin is known for sculpted landscapes and the Vietnam Veterans Memorial Wall, but she has also designed houses. Likewise, Japanese architect Sou Fujimoto has designed houses in addition to the 2013 Serpentine Pavilion in London. Large spaces, like cities and entire neighborhoods

within cities, are also designed by architects. In the early 20th century, Daniel H. Burnham created several urban plans, including for Chicago. In the early 21st century, architect Daniel Libeskind created what is called the “master plan” for redeveloping the World Trade Center area.

### Professional Responsibilities

Like most professionals, architects also take on other duties and special projects. Many architects teach at colleges and universities. Architects organize and run their professional organizations, like the American Institute of Architects (AIA) and the Royal Institute of British Architects (RIBA). Architects have also taken the lead in stopping climate change and global warming, moving toward the goal of new buildings, developments, and major renovations being carbon-neutral by the year 2030. Both the AIA and the work of Edward Mazria, founder of Architecture 2030, work toward this goal.

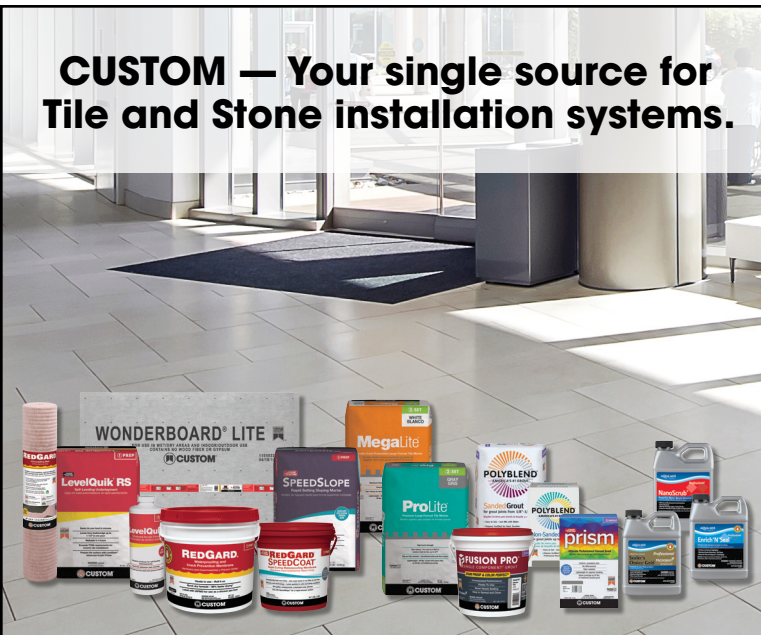
### What Do Architects Do?

Architects design and plan spaces (structures and cities), with consideration for looks (aesthetics), safety and accessibility, functionality for the client, cost, and specifying (the “specs”) construction materials and processes that do not destroy the environment. They manage the building project (large projects will have both a design architect and a project manager architect), and most importantly they communicate ideas. The architect’s role is to turn ideas (a mental activity) into reality (the “built environment”).

Examining the sketch history behind a structure often indicates the difficulty in communicating design ideas. A complex building like the Sydney Opera House began with an idea and a sketch. The Statue of Liberty sat in pieces in a local park before Richard Morris Hunt’s pedestal design was realized. Communicating architectural ideas is an important part of an architect’s job—Maya Lin’s Entry Number 1026 for the Vietnam Memorial wall was a mystery to some of the judges; Michael Arad’s competition entry for the National 9/11 Memorial was able to communicate a vision to the judges.

*Article continued on next page.*

## CUSTOM — Your single source for Tile and Stone installation systems.

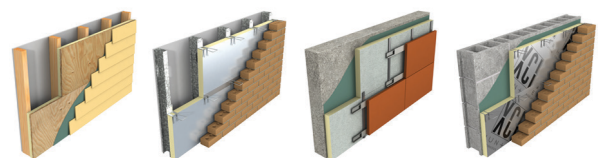


**CustomBuildingProducts.com**

Howard Jancy, CSI, CDT   Howard.Jancy@cbpmail.net



## Energy Efficient Xci Polyiso



**Brad Schwab • 630-772-3516**  
 bschwab@schwabgroup.net  
 www.hunterpanels.com

## What Is an Architect? (Cont.)

Written By Jackie Craven | Reprinted from ThoughtCo.

A licensed architect is the only designer who can rightfully be called “an architect.” As a professional, the architect is ethically bound by codes of conduct and should be trusted to abide by all rules and regulations associated with a building project. Throughout their careers, architects participate in continuing education and professional development, similar to medical doctors and licensed attorneys.

### And You Call Yourself an Architect?

Only licensed architects should call themselves architects. Architecture was not always a licensed profession. Any educated person could take on the role. Today’s architects have completed university programs and lengthy internships. Like doctors and lawyers, architects must pass a series of rigorous exams in order to be licensed. In North America, the initials RA designate a registered, or licensed, architect. When you hire a designer, know what the letters after your architect’s name mean.

### Kinds of Architects

Architects are trained and specialize in many areas, from historic preservation to structural engineering and from computer programming to environmental biology. This training can lead to a wide variety of careers. Many opportunities are available to the college graduate with a major in architecture.

An information architect is a person who plans the flow of information on Web pages. This use of the word architect is not related to building design or what is known as the built environment, although computer-aided design and 3D printing may be specialties within the field of architecture. Architects often design buildings, but a “Building Designer” is not usually a licensed architect. Historically, architects are “chief carpenters.”

The word “architect” comes from the Greek word *architekton* meaning chief (*archi-*) carpenter or builder (*tekton*). We often use the word “architect” to describe the artists and engineers who designed historic buildings or iconic towers and domes. However, it was only in the twentieth century that architects were required to pass tests and be licensed. Today, the word “architect” refers to a licensed professional.

Landscape architects often work closely with a building’s architects. “Landscape architects analyze, plan, design, manage, and nurture the built and natural environments,” according to their professional organization, The American Society of Landscape Architects (ASLA). Landscape architects have a different educational tract and licensing requirements than other registered architects of the built environment.

### Other Definitions of Architect

“Architects are licensed professionals trained in the art and science of the design and construction of buildings and structures that primarily provide shelter. Additionally, architects may be involved with designing the total built environment—from how a building integrates with its surrounding landscape to architectural or construction details that involve the interior of the building to designing and creating furniture to be used in a specific space.”—National Council of Architectural Registration Boards (NCARB)

“The most basic definition of an architect is a professional who is qualified to design and provide advice—both aesthetic and technical—on built objects in our public and private landscapes. But this definition barely scratches the surface of an architect’s role. Architects serve as trusted advisors, their role is holistic, blending diverse requirements and disciplines in a creative process, while serving the public interest and addressing health and safety matters.”—Royal Architectural Institute of Canada (RAIC)

**MEET THE NEW CLASS IN FIBERGLASS.**

ENGINEERED PRODUCT FOR HIGH-RISE BUILDINGS

SUPERIOR PERFORMANCE IN STRENGTH AND DURABILITY<sup>1</sup>

2.4X MORE ENERGY-EFFICIENT THAN THERMALLY BROKEN ALUMINUM<sup>2</sup>

**WINDOWS • DOORS • STOREFRONTS • WINDOW WALLS**

**Single-Source Solutions at a Competitive Price. From Pella.**

Envisioning a luxury, suburban-meets-urban experience, the development team looked to Pella® Impervia® large combination fiberglass windows. Their exceptional durability meets the rigorous performance requirements of the building while providing views that maximize daylight without compromising energy efficiency.

One Southdale Place • Edina, MN  
Architect: BKV Group  
General Contractor: Kraus Anderson  
Owner: StuartCo

**Pella**

**COMMERCIAL**

Chris Carpenter, CS, CCPR  
Architectural Representative  
630-675-4750  
ccarpenter@pella.com

<sup>1</sup> In testing performed in accordance with ASTM testing standards, Pella's Duracast® fiberglass composite has displayed superior performance in strength, ability to withstand extreme heat and cold, and resistance to dents and scratches.  
<sup>2</sup> U-Factor of Duracast frame is 2.4 times greater than that of thermally broken aluminum when compared in thermal testing.  
© 2018 Pella Corporation

## Recommend An Article

If you read or write an interesting article, please share it with us by [clicking here](#) and filling out an Article Recommendation Form.

## ShopCSI.org is online today!

News From CSI National



It's LIVE! The CSI Store is officially open for business!

By following the link below, or clicking "CSI Store" on the home page of the CSI website, you now have access to purchase small order quantities of chapter- and region-branded apparel, drinkware, gift sets, and more! There are even some products available for purchases in a quantity of one.

To have your materials branded to your chapter or region, just note that at the time of purchase, a representative will call you to confirm prior to production!

The store is open 24/7 and we will be adding new items throughout the year, including pins, bookmarks, notebooks, pop-up event banners, and more! Don't see something you'd like to have us offer? Just reach out to us at [marketing@csinet.org](mailto:marketing@csinet.org) and we will do our best to make it happen!

**CSI STORE**

## Looking To Lend A Hand? Check Out The Volunteer Portal

News From CSI National

CSI national is seeking volunteers for several different projects, including reviewers for the Project Delivery Practice Guide 3rd Edition, and the Component Value Task Force (CVTF). Join us in shaping the future of your CSI.

[Full details are available on the Volunteer Portal](#) (log-in required).

**VISIT THE VOLUNTEER PORTAL**

## North Central Region Conference Save the Date

Events From CSI NCR

Flint Hills Chapter will be hosting the 2020 North Central Region Conference on April 30 - May 2, 2020 in Lawrence, Kansas. Save the date!

**LEARN MORE**



**Issues:**  
Weather, salts, efflorescence

**Solutions:**  
Freeze/thaw- and submersion-resistant mortars, efflorescence-resistant grouts, expansion joints and a Mapethene waterproofing system

Balconies can be challenging environments for tile or stone installations – whether over occupied or unoccupied space.

MAPEI offers waterproofing systems solutions from the substrate up. Best of all, these solutions qualify for MAPEI's Best-Backed® system warranty, giving architects peace of mind when specifying MAPEI products.

For more information, visit [www.mapei.com](http://www.mapei.com) or call 1-800-992-6273.



- 1 Concrete
- 2 **Mapobond™ 700**, **Mapobond 710** or **Mapobond 720** adhesive
- 3 **Mapethene™ HT** or **Mapethene LT** sheet waterproofing
- 4 **Mapedrain™ 30**, **Mapedrain 35** or **Mapedrain 50** drainage composite
- 5 **Modified Mortar Bed** thick-bed and render mortar
- 6 **Mapelastix™ 315** (with **Fiberglass Mesh**) or **Mapelastix AquaDefense** waterproofing membrane
- 7 **Kerabond™ T** / **Keralastic™**, **Kerabond / Keralastic™** or **Granirapid™** mortar system
- 8 Ceramic or stone tile
- 9 **Ultracolor™ Plus FA** or **MAPEI Flexcolor™ CO** grout
- 10 **Mapesil™ T** 100%-silicone sealant
- 11 **UltraCare™** Penetrating Plus Stone, Tile & Grout Sealer penetrating sealer



# BLUE LINE

BUILDING ★ PRODUCTS

Independent Manufacturers Rep

"The Right Product for the Right Application"

**Morin®**

A Kingspan Group Company

**FUNDERMAX®**

for people  
who create



[www.Bluelinebp.com](http://www.Bluelinebp.com)

**Matt Martino**  
773.251.0066

[mmartino@bluelinebp.com](mailto:mmartino@bluelinebp.com)

## JBC Masonry Innovation Competition

Submission Deadline: December 15, 2019

\$30,000 in monetary awards in 3 categories:

- Students: Undergraduate or graduate students
- Young Architects/Engineers (under the age of 40)
- A/E Firms, Individual Architects/Engineers, & Cross-Category

Multidisciplinary teams are encouraged in all categories to help facilitate a well-conceived solution, but individual entries are also permitted. There are no restrictions on team size.

[FULL DETAILS](#)

## CRCA's 37th Annual Trade Show & Seminars

January 15-17

Drury Lane Conference Center, Oakbrook Terrace, IL

With over 135 exhibitors and over twelve hours of programming, this FREE event attracts roofing contractors from all over Illinois, as well as Wisconsin, Indiana Michigan, Iowa and beyond. Continuing education learning units are offered to roof consultants, architects, specifiers and building officials, who can attend for the FREE to receive this valuable roofing and waterproofing industry education.

[FULL DETAILS](#)

### Become A Chapter Partner Today

Platinum and Gold partnerships include ad space in this *Change Order* newsletter.

[Click here](#) to view partnership opportunities.

### Advertise Your Chicagoland Event Here!

Submission deadline: 15th of preceding month  
\$70 for chapter members  
\$100 for non-members

Contact: [administration@csichicago.org](mailto:administration@csichicago.org)

## CSI Chicago Silver Partners



Renee Doktorczyk, FAIA, CSI, CCS, SCIP  
[Renee@ArchiTechSpec.com](mailto:Renee@ArchiTechSpec.com)

**ArchiTech**  
CONSULTING, INC.

800 E. Northwest Hwy, Ste 208  
Mount Prospect, IL 60056-3457  
Tel: 224.345.3450

**Jeff M. Diqui**  
Director, Industry Development  
and Technical Services

Office: 630-396-7141  
Cell: 630-606-8220  
[jdiqi@imiweb.org](mailto:jdiqi@imiweb.org)  
2140 W. Corporate Drive  
Addison, IL 60101



**INTERNATIONAL  
MASONRY  
INSTITUTE**  
[www.imiweb.org](http://www.imiweb.org)

[Click here](#) to contact a local representative.