

# CHANGE ORDER

CONSTRUCTION SPECIFICATIONS INSTITUTE CHICAGO CHAPTER



## Chapter Meeting

### Interior Architecture: The Secrets of a Successful Cross-Collaboration

January 21, 2020  
5:00-8:00pm

East Bank Club  
Chicago, IL

See page 5 to learn more.

2020  
*January*



## 2020 CSi2eye

Meet Our Manufacturer Line Up  
Design & Construction Professionals Apply Now



See page 7 for details.

FROM THE PRESIDENT	2
MEMBER CONNECTION	3-4
CHAPTER EVENTS	5-8
CHAPTER QUICK READS	9
CHAPTER ARTICLES	10-11
CSI BEYOND THE CHAPTER	12
INDUSTRY EVENTS	13

## Upcoming Chapter Events

- 1/06 Certification Preparation: CDT Exam Study Class**
- 1/09 Specifier Roundtable: Low-Slope Roof Leak/Moisture Detection Testing: So Many Choices; So Little Time**
- 1/21 Chapter Meeting: Interior Architecture: The Secrets of a Successful Cross-Collaboration**
- 2/25 Building Enclosure: Dynamic Interfaces of Water-Resistive Barriers**
- 3/12 CSi2eye 2020: Design/Construction Professionals Apply Now**

## Included Articles

- 10 Holiday Party Raises Over \$2,600 For Foundation**
- 11 Three Ways to Ensure You Get Project Vision Follow-thru – From Spec to Install**



## LEADERSHIP TEAM 2019-20

### PRESIDENT

Andrea Baird  
CSI, CCCA, CDT

### PRESIDENT-ELECT

Brad Schwab  
CSI, CDT

### VICE PRESIDENT

Jennifer Friedland  
CSI, CDT, LEED GA

### VICE PRESIDENT

Scott Conwell  
FCSI, CDT

### SECRETARY

Chris Carpenter  
CSI, CCPR, CDT

### TREASURER

Elias Saltz  
CSI, CCS, CDT

### MEMBERSHIP OFFICER

Robert Moretti  
CSI, CDT

### DIRECTORS

Guadalupe Casimiro  
CSI, CDT

Randall Chapple  
CSI, CSS, CDT

Paul Fogarty  
CSI, CDT

Rachel Nava  
CSI, CDT

Jeremy Olsen  
CSI, CCS, CCCA, CDT

Heather Rice  
CSI, CDT

### IMMEDIATE PAST PRESIDENT

Peter Grotenhuis  
CSI, CDT

### DIRECTOR - NCR

Drew Clausen  
CSI

### EXECUTIVE DIRECTOR

Beth Winkler



## Event-Packed Start to 2020

### Andrea Baird

NCARB, P.E., BECxP, CxA+BE, CCCA, LEED AP BD+C

Thank you to all those were where able to make it to our holiday party, and to our Social Committee for organizing such a fun event. At the party, we started a new tradition of competitive holiday songs.

In December Lupe Casimiro and our Rebuilding Together Committee selected a home for us to assist in renovating. It is my understanding that the scope of work will be less intense relative to the house selected last year. Please mark your calendars for our building day on April 25, 2020 and look for more details in the coming months.

The beginning of the year is a busy time for the Chapter with our two signature events occurring early in the year. The [Building Enclosure Event](#) will be in February again at Maggiano's and CSi2eye in March at East Bank Club. Registration is open for the Building Enclosure Event featuring speaker Steven Doggett of Built Environments, Inc and there are still [sponsorship opportunities](#) at this event available. There is still time for designers and specifiers to submit their applications by January 24, 2020 for [CSi2eye 2020](#). Please pass the word to your colleges that may not be members but would still benefit from attending.

There are many volunteer opportunities within the Chapter even if you are not a board or committee member. Applications for Regional and Institute awards will be due soon. If you are interested in helping the Chapter and our members be acknowledged for our service to the design and construction industry, please contact Brad Swab at [bschwab@schwabgroup.net](mailto:bschwab@schwabgroup.net) to volunteer to assist with the awards applications. If you are looking to get involved in another committee, you can express your interest on the [committee interest link](#), which can also be found on the [M2M Connection Hub](#) on our website.

We are switching thing up a bit with our [January 21 Chapter Meeting](#) on Interior Architecture by Patricia Rotondo of Antunovich Associates. You can still [register](#) for this event until January 14. I look forward to seeing you then.

**M2M** CONNECTION  
Built By Members For Members



Submit content for the Change Order Newsletter using our M2M Connection Tool Box.

CLICK TO VIEW OUR LEADERS



## Member Spotlight

**Jessica Newell, CSI**

Jessica is an Architectural Account Executive for Sherwin-Williams. She is a resource for commercial architects and designers, assisting with specifications and the construction process. Her ten years with the company began with store management. She then became a Designer Account Executive, working with residential designers and architects out of the world's largest design center, the Merchandise Mart in Chicago. Here she had the opportunity to learn from top tier design firms and showrooms. Later, she took on the role of Designer Marketing Manager for the Midwestern Division where she managed the Designer Account Executives as well as supported designer marketing efforts across the Midwest division.

Within her role and product offering, she is privileged to be involved in many projects both locally and around the world! She feels it is an honor to be able to network and build relationships with such wonderful people in CSI Chicago. From day one, she says she has been welcomed with open arms to be a part of such a unique and close knit community and says she has made many business, as well as personal connections, through CSI.

On the personal side, Jessica is vying for Supermom as she will soon be a mom of three boys under 3.5 years! Please send all the baby proofing items you own. She enjoys secretly watching Real Housewives - or any Bravo show for that matter. Her favorite hobby is going to her local gym which is a lot like crossfit/HIIT type classes.

She encourages the next generation to join CSI. She can't help it since she is on the membership committee. Its engrained in her! Join networking groups and get to know people in the industry who you can lean on for support.

## Members On The Move



**Demetria Boatwright, CSI-EP, CDT** of Rath's, Rath's, and Johnson, Inc. received her passing notification for the CDT exam and shares "I would like to thank CSI Chicago for the opportunity to take the exam through their CDT Scholarship!"



**Chris Carpenter, CSI, CCPR**, Architectural Consultant with Pella Windows & Doors, has been elected to the board of AIA Chicago as Professional Affiliate Director.

Please [click here](#) and fill out the *Members On The Move Form* to share your personal or professional news/achievements.

## New Chapter Members

### New CSI Members

**Carter Mau, CSI-EP**  
*Mau INC*

**Eric Kuhlman, CSI**  
*Centria*

**Robert Hill, CSI**

### CSI Members Joining Chicago Chapter

**Owen Landsverk, CSI, CDT (11yr CSI member)**  
*State of Wisconsin Dept. of Administration*

## Membership Milestones

### 30+ Years

**Kenneth Lies, CSI (34 yrs)**  
*Raths, Rath's & Johnson, Inc.*

### 10 Years

**Tyler Barton, CSI**

*Thank you to all of our members who are celebrating an anniversary with CSI Chicago this month. Membership Milestones features members who are celebrating 5 yrs, 10 yrs, 15 yrs, 20 yrs, 25 yrs and 30+ yrs.*

## Share With Your Fellow Members

Visit our [M2M Connection Hub](#) to learn how you can be a part of the *Change Order* member newsletter by sharing your news and ideas with fellow members.

**Jeff M. Diqui**  
*Director, Industry Development  
and Technical Services*

Office: 630-396-7141  
Cell: 630-606-8220  
jdiqui@imiweb.org  
2140 W. Corporate Drive  
Addison, IL 60101



**INTERNATIONAL  
MASONRY  
INSTITUTE**  
www.imiweb.org



## Project Showcase

Shared by: ArchiTech Consulting

The Veterinary Orthopedic Center (VOC) in Highland, Indiana is a 100% electric, carbon-free facility that serves as the key anchor to The Cardinal Campus of Highland, a new professional office development that is in the process of seeking LEED for Neighborhood Development certification. The owner's ambitious vision: showcase the most sustainable design principals and technologies available, making the campus, beginning with the VOC, a model for future development.

The VOC and the development which it anchors represents an incremental first step in transforming a classic auto-oriented commercial strip into a walkable place. Without the benefit of density / connectivity or access to public transportation (which were outside of the project's control), it had to put maximum effort into every other element of sustainability.

For example, the building achieves exemplary energy performance by maximizing its use of renewable energy. The building worked hard to utilize every available inch of rooftop area for solar panels, even designing large canopies to further expand its capacity. To showcase the use of solar PV technology, the canopy is designed with cut-outs where transparent panels are visible from below, making them a kind of architectural ornamentation.

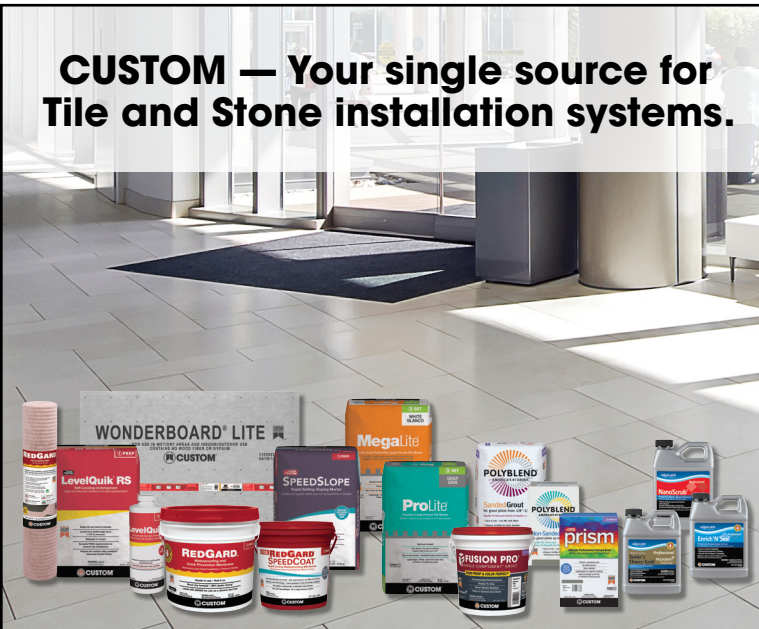


Photo courtesy of Farr Associates.

Additional sustainable features include a centrally located open staircase, regional construction materials, a recycled aluminum entry canopy, and an electric vehicle charging station.

Farr Associates led the master planning of the development and served as architect for the Vet Clinic. The Project Team included ArchiTech Consulting, dbHMS, ECT, SP Engineers, and Core Construction.

## CUSTOM — Your single source for Tile and Stone installation systems.



CustomBuildingProducts.com

Howard Jancy, CSI, CDT   Howard.Jancy@cbpmail.net



## Share Your Firm's Project

If you were on a team that just completed a project, [click here](#) and fill out a form.



## Interior Architecture: The Secrets of a Successful Cross-Collaboration Chapter Meeting

Interior designers create environments that address occupant welfare, which requires consideration of complex physical, mental, and emotional needs. It takes craft; it takes expertise; and it takes a village to create these spaces. The cross-collaboration between disciplines includes analysis, planning, design documentation, and management of complex interior environments in compliance with building design, construction, fire, life-safety and energy codes, industry standards, and regulations. This presentation will provide a comprehensive discussion on what interior designers do beyond selecting color and fabrics and review how they work with teams to create successful and profitable projects.

Continuing Education: 1.0 AIA CES LU  
Registration required by January 14, 2020.

[FULL DETAILS & REGISTRATION](#)

[EVENT SPONSORSHIP OPPORTUNITIES](#)

**Date:** Tuesday, January 21, 2020, 5:00-8:00 PM

**Location:** East Bank Club, Chicago

**Cost For Dinner & Program:**

CSI Chicago Members are Complimentary  
Nonmembers \$60



**Patricia Rotondo, IIDA**  
Senior Principal | Director of Interior Design  
Antunovich Associates

As a designer with over two decades of experience, Patricia joined Antunovich Associates as Senior Principal and Director of Interior Design. Patricia leads and continues to grow the firm's Interior Design practice, bringing unique creativity and concept-based design approach to deliver forward-thinking designs and guiding client and team collaborations with the firm's longstanding architectural excellence. She has been responsible for developing design concepts and space analyses for significant projects, creating thoughtfully designed destinations, including hotels and resorts, multi-family communities, government buildings, mixed-use, residential, senior living communities and higher education clients throughout the country and the globe.

Patricia was the recipient of the 2018 IIDA Member of the Year Award.

## CSI Chicago Platinum Partners



[Click here](#) to contact a local representative.

## CDT Exam Study Class

### Certification Preparation

**Class Dates\*:** Mondays, Jan 6 - Mar 23, 2020, 5:30 - 8:00pm  
**Location:** HACIA 650 W. Lake Street, Suite 415, Chicago

Construction Specification Institute's Construction Documents Technology (CDT) Certification provides foundational training in construction process, roles and responsibilities, and construction documentation for architects, contractors, contract administrators, specifiers, and manufacturers' representatives for decades. This study class will provide you a better understanding of how projects develop from conception to delivery and the documentation involved while helping you prepare for the CDT exam.

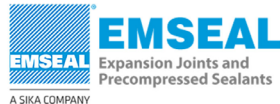
The class provides a conceptual understanding of the entire construction process, and concrete skills in construction documentation development and administration, specification writing and enforcement, product research and sourcing, communication with the design and contracting teams. Each class is taught by industry leaders from both the A/E and Product Representative Community. Classes include power point presentation followed up with quizzes that will help to reinforce the content of the session. The last class includes a practice exam to replicate the CDT exam. Attendees get exposure to industry leaders as teachers that are willing and able to answer questions.

**Continuing Education:** 15.0 AIA/CES  
 (Must attend at least 8 classes)  
**Class Fee:** \$150 to CSI Chicago members,  
 \$300 for non-members

\*Class runs for 11 weeks. Schedule posted is for 12 weeks to allow for one cancellation due to weather or other unforeseen circumstances.

**SEATING HAS FILLED FOR THE 2020 CLASS.**

### Class Sponsors



## Low-Slope Roof Leak/Moisture Detection Testing: So Many Choices; So Little Time

### Specifier Roundtable

**Jan 9, 2020 from 12:00 PM to 1:00 PM**

**Lamar Johnson Collaborative, Chicago or Live Webcast**

### Panel:

**Flood Testing Laboratories, Inc.** - Raymond Makiejus, RRC, RRO; Project Manager

**International Leak Detection** - Matthew Durrett, RRO; National Sales Manager

**Olsson Roofing Company, Inc.** - Brian Vladovich; Project Manager

**Tremco Roofing** - Robert Moretti, MBA, CDT, CSI; Director, Technical Solutions

**Moderator:** Melissa Gibson AIA, CSI, CCS, CCCA; Director of Specifications, Goettsch Partners

Representatives from multiple roof leak and moisture detection services will join our technical roofing specialist and experienced roofing contractor to discuss the various testing and imaging options available to verify the integrity of installed low-slope roofing systems.

**FULL DETAILS & REGISTRATION**



### Introducing Insulated Masonry Veneer Systems

Fully-integrated exterior cladding systems with a continuous air and water-resistive barrier and insulation for superior performance. Insulated Masonry Veneer Systems feature BASF MaxGrip Veneer Mortar, a high-strength, specially-formulated setting bed mortar used to adhere natural and manufactured stone, tile, and thin brick veneer.

**Learn more at [www.senergy.basf.com](http://www.senergy.basf.com) or contact your local BASF representative, David Meyers at [david.meyers@basf.com](mailto:david.meyers@basf.com) or 630-423-1980.**

© 2019 BASF Corporation. All rights reserved.



## CSi2eye 2020

One-On-One Technical Education Event

**Design & Construction Professionals Apply Today**

CSi2eye is a complementary event with limited space for design and construction professionals who are responsible for selecting and specifying materials and are committed to continual learning and staying up to date on products, applications, and resources available today.

If you are you are an architect, specifier, general contractor, project manager, consultant, owner's representatives, etc., this event is for you. Don't worry if you are not a CSI member, this event is for members and non-members.

**Date: Thursday, March 12, 2020**

**Time: 8am-5pm w/ Half & Full Day Options**

**Location:** East Bank Club, Chicago

**Cost:** FREE - Includes, breakfast, lunch, cocktail reception.

**Sessions: Choose half or full day attendance**

**Morning Meetings:** 9:00am - 12:00pm

**Afternoon Meetings:** 1:30pm - 4:30pm

Breakfast, Lunch, & Reception open to all attendees.

**Applications Due:** Fri. Jan 24, 2020

**FULL DETAILS**

**Bring Your Knowledge - Bring Your Questions - Get Answers - Learn Something New**

## 2020 Manufacturer Line Up

Our diverse group of manufacturers this year promises to deliver a great experience for design and construction professionals. These manufacturers will be sending representatives with technical product knowledge beyond that provided by your local representative. Participants will be introduced to new product and system solutions in the areas of acoustics, windows, glazing, roofing, cladding, and more.



## Lunchtime Educational Presentation



Deputy Director of Planning & Design Kerl LaJeune will offer a retrospective on the ambitious initiatives and projects undertaken by the Public Building Commission of Chicago (PBC) in his presentation *Public Building Commission Chicago – A Wider Lens*. Beyond the traditional scope of construction projects, PBC projects are unique in that they must also align with Mayoral mandates while delivering successful outcomes. The goal of PBC projects is to enhance every neighborhood of the City of Chicago and Cook County.

## Build Relationships Through Knowledge Sharing

**Apply by Friday, January 24, 2020**

**DESIGN & CONSTRUCTION TEAM  
DETAILS & APPLICATION**



## Dynamic Interfaces of Water-Resistive Barriers

### Building Enclosure Event

**Presented by: M. Steven Doggett, PH.D., LEED AP**  
Principal Building Scientist Built Environments, Inc.

Water-Resistive Barriers (WRBs) have evolved to serve compound forms and functions. Despite these advances, performance expectations still reflect over-simplistic assumptions and problematic testing methods. Interfaces with modern wall components also remain ill-defined with respect to the WRB's primary function of liquid water resistance. Industry trends toward component integration have further strained the WRB's intended role.

This two hour presentation will review new findings from experimental research and computational modeling to demonstrate performance attributes of recognized WRB systems. Moisture transport and storage will be reviewed for three dynamic interfaces: A) the exterior insulation interface; B) the substrate interface; and C) the fastener interface. Directives for industry research, testing standards, and product innovation will be discussed.

#### Learning Objectives:

1. Define the role of WRBs in context with key interfaces in modern wall design.
2. Apply basic building science principles to identify new challenges in WRB performance.
3. Recognize common failure mechanisms associated with exterior insulation.
4. Assign directives for improving WRB systems, testing standards, and installation practices.

**Continuing Education:** 2.0 AIA CES LU|HSW  
2.0 CPHC CEUs

**Attendees can stop by sponsor tabletops to be eligible to win great prizes at the event!**

### Event Sponsors



**Date:** Tuesday, February 25, 2020, 11:15am-3:30pm

**Location:** Maggiano's Little Italy, Chicago

#### Cost:

\$50 Members & Industry Partners (see below list )  
\$60 Nonmembers

#### Timeline:

11:15am registration begins and sponsor tables open  
11:45am lunch  
12:30pm presentation begins (2 hour lecture + Q&A + breaks)  
3:30pm event concludes

**Registration:** Required by Tuesday, February 18, 2020.

**Parking:** Valet parking (Cash Only) is available at Maggiano's; Street Parking upon Availability; and Grand Plaza Garage (29. E Ohio Street)

### FULL DETAILS & REGISTRATION

### EVENT SPONSORSHIP OPPORTUNITIES



Steven Doggett, Ph.D., LEED AP is the Principal Scientist and founder of Built Environments, Inc. an architectural & building science consulting firm specializing in building enclosure design and research. His background includes extensive field experience with complex building enclosure failures, particularly those involving air, heat, and moisture transport. He merges this experience with innovative design practices to assist multi-stakeholders achieve more resilient, higher-performing buildings. Dr. Doggett is actively engaged in enclosure design, assembly and material research, and building simulations involving computational fluid dynamics, 3-D thermal modeling, and hygrothermal modeling. Dr. Doggett is the former chair of the Minnesota Building Enclosure Council.

### Industry Partners



**AIA**  
Chicago



**Building**  
**Enclosure**  
**Council**





## We Have Another House

Lupe Casimiro and Kathy St. Joseph (pictured below), from our Rebuilding Together committee, selected the chapter's 2020 home through Rebuilding Together -Metro Chicago at the group's Housewarming Party on Tuesday, December 10. This year's home is owned by a 79-year old widow who takes enormous pride in her home of 55 years and reminisces about purchasing it new for \$17,500.

We look forward to more updates on the work involved as the committee visits the home at the end of January.

You can support the chapter's work on this project and all our charitable causes by donating to the [CSI Chicago Foundation](https://www.csi-chicago.org/).



## Student Scholarship Competition Ends Jan. 15



Each year the CSI Chicago Foundation awards up to three Chicago area architectural students with a scholarship ranging from \$500 - \$1,000 each for their exceptional design efforts. All applications are due by January 15, 2020. Click the below button for full scholarship competition details.

[LEARN MORE](#)

## Congratulations To Our CDT Scholarship Recipients

We are excited to announce the 2020 CDT Scholarship Recipients. We had several strong candidates this year so it was tough decision. This year's recipients are:

**Catie Troung** from Level Architecture Incorporated  
**Agnieszka Dawidziak** from Thomas Roszak Architecture

## CSI Chicago Gold Partners

**ArchiTech**  
CONSULTING, INC.

**VCI**  
HUNTER  
CONTINUOUS INSULATION

**team**

[Click here](#) to contact a local representative.



7/8-in. perforated corrugated panels overlay the graphic

## Fun Flexibility

"It's a fun material because it's very flexible to design with and doesn't drive costs up."

-Joe Buehler, AIA, LEED AP BD+C, TEAM A

Case study at [PAC-CLAD.COM/MOVINGEVEREST](https://www.pac-clad.com/movingeverest)

[PAC-CLAD.COM](https://www.pac-clad.com) | [INFO@PAC-CLAD.COM](mailto:info@pac-clad.com)

IL: 800 PAC CLAD MD: 800 344 1400 TX: 800 441 8661  
GA: 800 272 4482 MN: 877 571 2025 AZ: 833 750 1935

**PAC-CLAD**  
PETERSEN  
A CARLISLE COMPANY

## Holiday Party Raises Over \$2,600 For Foundation

Written by: Brad Schwab, CSI, CDT

The 2019 Holiday Party delivered holiday fun with a charitable heart. The Social Committee out did themselves this year with over 70+ attendees, 30+ raffle prizes distributed, 3 silent auction prizes distributed, a caroling contest, and over \$2,600.00 raised for the CSI Chicago Foundation. The Erie Café was a perfect choice of venue as it delivered a spacious back room with plenty of room for networking and showcasing the silent auction prizes and raffle prizes donated by members.

John McKeivitt did a wonderful job as "mc" for the night. He reminded everyone about all of the great charitable initiatives the chapter has planned and how the foundation will be supporting those initiatives financially. The three initiatives he mentioned are [2020 Rebuilding Together](#), [2020 Student Scholarships](#), and [Future Cities Competition](#). He also mentioned that you can donate to the CSI Chicago Foundation anytime by visiting our [CSI Chicago Foundation Webpage](#).

We distributed over 30 raffle prizes which included large gift baskets, bottles of wine, gift cards, a live lobster certificate, a Roku stick and much more. We also distributed three silent auction items which include a Lake Michigan Sailing Package and two sets of Chicago Bulls tickets.

We also introduced a caroling contest where each table was giving a Christmas Carol to sing and the social committee chose the winner. We wish we would have filmed it for you but we didn't so you will have to imagine the great voices, the beer bottles as instruments and there was even great cartwheels.

Thank you everyone for a great 2019 and here's to 2020! Thank you again to our event sponsors [ASSA ABLOY](#) and [Hilti](#). [Click here](#) to view pictures from the event.



### Thank You Raffle and Silent Auction Donors

Khaled Akkawi - Liya Investment  
 Nicole Bird - dormakaba USA Inc.  
 Tom Chakos - Golf Construction  
 Timothy Blatner - FitzGerald Associates Architects  
 Tim Corbett - U.S. Govt SSA  
 John J. Cullerton  
 Patrick Duffy - Advanced Building Products  
 Tamara Foncerrada - Air Barrier Association of America  
 Peter Grotenhuis - SMARTci  
 Kristin Henriksen - Sto  
 Steve Hunt - BlockUp  
 Caroline Kirker - SOMPREMA  
 Ken Lies - Rath, Rath & Johnson, Inc.  
 Paul Larson - ComStruct Sales  
 Jim Lucas - J.N. Lucas & Associates  
 John McKeivitt - General Shale Arriscraft  
 Brad Meyer - Terrazzo Marble & Supply  
 Heather Mistele - Allegion  
 Julie Montrose - Parex USA  
 Matthew Reed - Parksite  
 Patrick Reicher - Rath, Rath & Johnson, Inc.  
 Kira Rogatnik - Metl-Span  
 Pat Ruban - Behr Paint Company  
 Elias Saltz - Conspectus, Inc.  
 Brad Schwab - Schwab Group LLC  
 Jeffery - Soukup  
 Michael Sreckov - dormakaba USA Inc.  
 Elaine Szot - Hilti  
 Chris Walsh - Inpro  
 Dan Warren - Hafele America



Creating Value.

Reducing Risk.

Where Design and Construction Meet.



*A Full Suite of Industry-Leading Capabilities:*

- Systems and Performance Documentation*
- Construction Specifications*
- Risk & Quality Advisory*

Conspectus, Inc.  
 Elias Saltz, CSI, CCS  
 Chicago, IL  
 609 628 2390  
[esaltz@conspectusinc.com](mailto:esaltz@conspectusinc.com)  
[www.conspectusinc.com](http://www.conspectusinc.com)



## Three Ways to Ensure You Get Project Vision Follow-thru – From Spec to Install

Reprinted from Masonite Architectural



**Recommended by: Paul Sowacke, CSI**

Imagine spending over 12 hours of your design time picking just the right wood veneer doors for your project.

You looked through the product lines finding a species and finish you liked.

- You ordered samples from the manufacturer.
- You sat down with the interior designer to make sure you were on the same page for other finishes in the project.
- You reviewed the options with the client to make sure they're happy with it.
- You spent a few hours editing the wood door spec to get it just right.

Then at the end of construction, you show up for the punch list to find a building full of doors that are a far cry from what you'd envisioned. It's too late to change now. You approved the shop drawings and the owner needs to open for business next week. So you're stuck with a bunch of doors that don't quite flow with the rest of the interiors. You're not happy. The interior designer's disappointed. And the client is wondering what went wrong. There will likely be a lot of finger-pointing and blaming, but there has to be a better way to get in front of this potential nightmare.

Where did it go wrong, and how can you avoid it happening to you? The following offers a few tips to help keep you on track.

### Knowledge is Key

Early in your project, you should work with your wood door distributor. Let them know your design intent, your budget, color and grain requirements, and the total size of the project. Using their resources helps you enhance your knowledge and help your clients.

You'll also find a wealth of resources throughout our website. Go to our [Educational Content Page](#) where you'll find downloadable PDFs on various wood veneer topics. You'll also find descriptions of the many CEU presentations we have available.

Specifying wood veneer doors can be a challenge. It's important to know the wood species, their veneer availability, and how to use those veneers. Then you have to clearly communicate your ideas or intent, to end up with your initial vision.

### Clearly define your design intent

At some point it may be necessary to hand your project over to someone else to care for during construction. You may have other projects or other responsibilities pulling you away. Or your firm may have designated staff to handle the construction administration.

Whatever the case, you want to ensure the design intent is

clear to anybody who comes along. One way to do that is with design reference samples.

Having a design reference sample is a great way to ensure your design intent is clear to all parties.

Be sure to note, it's more than just a simple swatch of veneer and finish color. Your design reference samples should include all of the following important material and construction details:

- Veneer grade
- Veneer species
- Veneer cut
- Veneer Leaf Match
- Face assembly match

### Develop a system of checklists

We've mentioned it in other blog posts, and you may have seen it on our website. One of the best ways to make sure you stay on top of your project's door selection and design is to download our [Specification Checklists](#).

With these checklists, you'll have reminders of what you can do at each phase of your project. You'll have a great system in place you'll find flows into other areas of your design as well.

### One more thing...

One last bonus tip: Aesthetics deals with subjective issues like color, grain character and scale. And one key element of your specification is the face grade veneer.

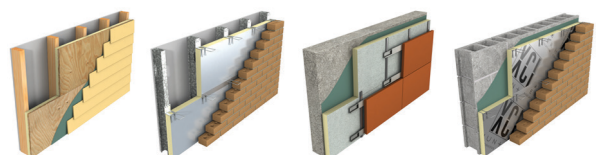
Define your project's spaces where higher aesthetics are most important. Focus on them for the Grade AA door finish, and define other areas where Grade A is acceptable. Make sure these different zones are clearly defined in the specs and, if needed for clarity, on your drawings.

You'll save the project (and your client) time and money.

### Recommend An Article

*If you read or write an interesting article, please share it with us by [clicking here](#) and filling out an Article Recommendation Form.*

## Energy Efficient Xci Polyiso



**Brad Schwab • 630-772-3516**  
**bschwab@schwabgroup.net**  
**www.hunterpanels.com**

## Exam Dates for CDT®, CCS, and CCCA News From CSI National

Take the next step in building your career! Now is the time to start planning for certification exams in 2020. Exams offered will include CDT® and the return of the CCS and CCCA.

Registration opens on February 19!

### Spring 2020 Certification Registration for CDT®, CCS, and CCCA

Exam Window: May 4 – June 5, 2020

Registration Opens February 19, 2020

#### CERTIFICATION OVERVIEW

Renee Doktorczyk, FAIA, CSI, CCS, SCIP  
Renee@ArchiTechSpec.com

**ArchiTech**  
CONSULTING, INC.

800 E. Northwest Hwy, Ste 208  
Mount Prospect, IL 60056-3457  
Tel: 224.345.3450

## Digital Badge Day: January 8, 2020 News From CSI National

Join us in welcoming the new CDT® credential holders on Digital Badge Day, January 8, 2020.

CSI Digital Badges are a visual representation of expertise and achievement. Be sure to like, share, and congratulate the CSI Digital Badge holders as they show up in your social media feeds.

If you haven't claimed your digital badge, [learn how to accept and display your badge here](#).

#### LEARN ABOUT DIGITAL BADGES

## North Central Region Conference Save the Date Events From CSI NCR

Flint Hills Chapter will be hosting the 2020 North Central Region Conference on April 30 - May 2, 2020 in Lawrence, Kansas. Save the date!

#### LEARN MORE

MEET THE NEW  
CLASS IN FIBERGLASS.

ENGINEERED PRODUCT  
FOR HIGH-RISE BUILDINGS

SUPERIOR PERFORMANCE IN  
STRENGTH AND DURABILITY<sup>1</sup>

2.4X MORE ENERGY-EFFICIENT THAN  
THERMALLY BROKEN ALUMINUM<sup>2</sup>

WINDOWS • DOORS • STOREFRONTS • WINDOW WALLS

Single-Source Solutions at a Competitive Price. From Pella.

Envisioning a luxury, suburban-meets-urban experience, the development team looked to Pella® Impervia® large combination fiberglass windows. Their exceptional durability meets the rigorous performance requirements of the building while providing views that maximize daylight without compromising energy efficiency.

One Southdale Place • Edina, MN  
Architect: BKV Group  
General Contractor: Kraus Anderson  
Owner: StuartCo



COMMERCIAL

Chris Carpenter, CSI, CCPR  
Architectural Representative  
630-675-4750  
ccarpenter@pella.com

<sup>1</sup> In testing performed in accordance with ASTM testing standards, Pella's Duracast® fiberglass composite has displayed superior performance in strength, ability to withstand extreme heat and cold, and resistance to dents and scratches.

<sup>2</sup> U-Factor of Duracast frame is 2.4 times greater than that of thermally broken aluminum when compared in thermal testing.

© 2018 Pella Corporation

**BLUE LINE**  
BUILDING ★ PRODUCTS

Independent Manufacturers Rep

"The Right Product for the Right Application"

**Morin®**

A Kingspan Group Company

**FUNDERMAX®**

for people  
who create



[www.Blueinebp.com](http://www.Blueinebp.com)

**Matt Martino**  
773.251.0066  
[mmartino@blueinebp.com](mailto:mmartino@blueinebp.com)



## IBEC-Chicago Annual Meeting and Program and Cocktail Reception

January 15, 2020

Hamburger University at McDonald's Campus, Oak Brook, IL

Please join us for a full day of great speakers, networking, and catching up with friends and colleagues. By attending you have the opportunity to earn 6.0 CEH's.

In addition to our traditional all-day program, the program will again be followed by a cocktail reception and awards ceremony.

[FULL DETAILS](#)

## Investigation and Repair of Wood Structures

Structural Engineers Association of Illinois

January 23, 2020 - 8:00am to 12:00pm

Association Forum, Chicago, IL

Richard Kristie and Joseph Toniolo from WJE will discuss background for wood as a structural material, techniques for investigating wood structures to determine the type and extent of damage, and repair design and construction.

Use discount code **WOODCSI** when you register to receive the member rate.

[FULL DETAILS](#)

## CRCA's 37th Annual Trade Show & Seminars

January 15-17

Drury Lane Conference Center, Oakbrook Terrace, IL

With over 135 exhibitors and over twelve hours of programming, this FREE event attracts roofing contractors from all over Illinois, as well as Wisconsin, Indiana, Michigan, Iowa and beyond. Continuing education learning units are offered to roof consultants, architects, specifiers and building officials.

[FULL DETAILS](#)

## Architectural Sales Consultant Position

Job Opportunity with Allegion

The Architectural Consultant will prospect new architectural relationships to promote our specification services for division 8 and division 28 business by conducting AIA security solution presentations to architects and the design build (contractor) community, maintaining relationships through technical support and guidance, and following specifications through the full sales cycle to final closing of the opportunity.

[FULL DETAILS](#)

## CSI Chicago Silver Partners



[Click here](#) to contact a local representative.



Balconies can be challenging environments for tile or stone installations – whether over occupied or unoccupied space.

MAPEI offers waterproofing systems solutions from the substrate up. Best of all, these solutions qualify for MAPEI's Best-Backed™ system warranty, giving architects peace of mind when specifying MAPEI products.

For more information, visit [www.mapei.com](http://www.mapei.com) or call 1-800-992-6273.



- 1 Concrete
- 2 **Mapebond™ 700**, **Mapebond 710** or **Mapebond 720** adhesive
- 3 **Mapethene™ HT** or **Mapethene LT** sheet waterproofing
- 4 **Mapedrain™ 30**, **Mapedrain 35** or **Mapedrain 50** drainage composite
- 5 **Modified Mortar Bed** (thick-bed and render mortar)
- 6 **Mapelastic® 315** (with **Fiberglass Mesh**) or **Mapelastic AquaDefense** waterproofing membrane
- 7 **Kerabond™ T / Keralastic®**, **Kerabond / Keralastic™** or **Granirapid®** mortar system
- 8 Ceramic or stone tile
- 9 **Ultracolor® Plus FA** or **MAPEI Flexcolor® CQ** grout
- 10 **Mapefil™ T** 100%-silicone sealant
- 11 **UltraCare™** Penetrating Plus Stone, Tile & Grout Sealer penetrating sealer

